

THE INFORMATION CONTAINED HEREIN IS CONSIDERED "PROPRIETARY" TO BEL FUSE INC. AND SHALL NOT BE COPIED, REPRODUCED OR DISCLOSED WITHOUT THE WRITTEN APPROVAL OF BEL FUSE INC.

RoHS



| LED 2 & 4 POLARITY | | | LED 1 & 3 POLARITY | | |
|--------------------|--------|-------|--------------------|--------|-------|
| PIN 11 | PIN 12 | COLOR | PIN 13 | PIN 14 | COLOR |
| + | - | GREEN | + | - | GREEN |

ELECTRICAL CHARACTERISTICS @ 25°C

URNS RATIO

| | |
|-----|---------------|
| TP1 | 1CT : 1CT ±2% |
| TP2 | 1CT : 1CT ±2% |
| TP3 | 1CT : 1CT ±2% |
| TP4 | 1CT : 1CT ±2% |

□CL @ 100kHz/100mVRMS

| | |
|-------------|------------|
| 8mA DC BIAS | 350µH MIN. |
|-------------|------------|

INS. LOSS

| | |
|------------------|-------------|
| 0.1MHz TO 1MHz | -1.1 dB MAX |
| 1MHz TO 65MHz | -0.5 dB MAX |
| 65MHz TO 100MHz | -0.8 dB MAX |
| 100MHz TO 125MHz | -1.2 dB MAX |

RET. LOSS (MIN)

| | |
|--------------|-----------------------|
| 0.5MHz-40MHz | -18 dB |
| 40MHz-100MHz | -12+20LOG(f/80MHz) dB |

CM TO CM REJ

| | |
|-----------------|------------|
| 100kHz - 100MHz | -30 dB MIN |
|-----------------|------------|

CM TO DM REJ

| | |
|-----------------|------------|
| 100kHz - 100MHz | -35 dB MIN |
|-----------------|------------|

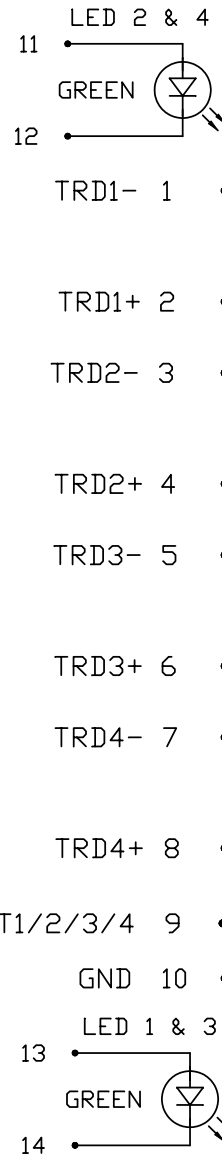
HIPOT (Isolation Voltage):

1500 Vrms

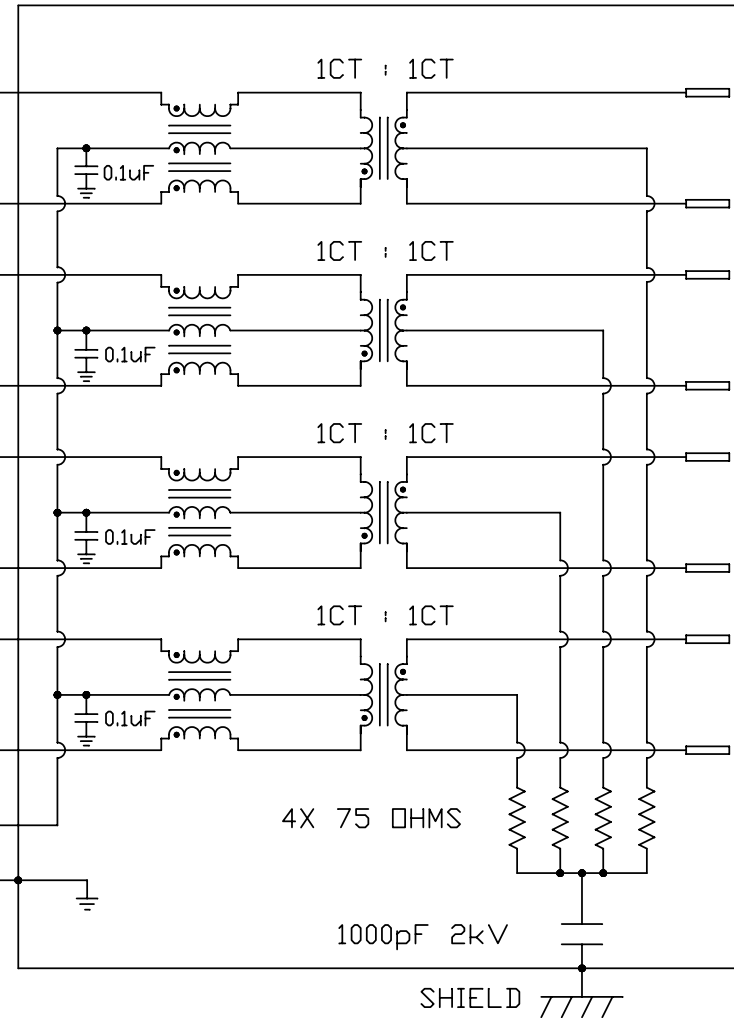
100% OF PRODUCTION TESTED TO COMPLY WITH IEEE 802.3 ISOLATION REQUIREMENTS.

LEDS 1, 2, 3 AND 4

| | | | |
|--------------------------|---------|-------|------------|
| VF (FORWARD VOLTAGE) | IF=20mA | GREEN | 2.2V TYP. |
| λD (DOMINANT WAVELENGTH) | IF=20mA | GREEN | 565nm TYP. |



SCHEMATIC



RJ45

1 TRP1+

2 TRP1-

3 TRP2+

6 TRP2-

4 TRP3+

5 TRP3-

7 TRP4+

8 TRP4-

| | |
|----------------------|-------------|
| ORIGINATED BY | DATE |
| CHOW WANCHUNG | 2012-07-09 |
| DRAWN BY | DATE |
| TAN QIGUANG | 2012-07-09 |

| | |
|--------------|---|
| TITLE | 2X2 gigabit MagJack® WITH UPPER AND LOWER LED (8 Cores) PATENTED |
|--------------|---|

| | |
|-------------------------------|--------------------|
| PART NO. / DRAWING NO. | 0879-2G2R-54 |
| FILE NAME | 0879-2G2R-54_D.DWG |

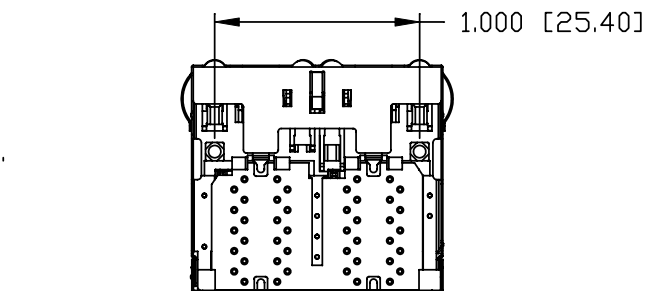
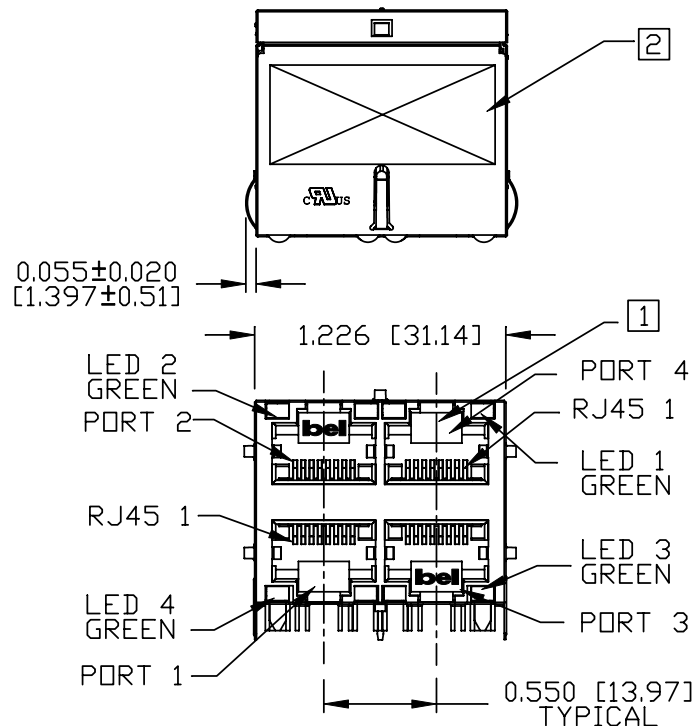
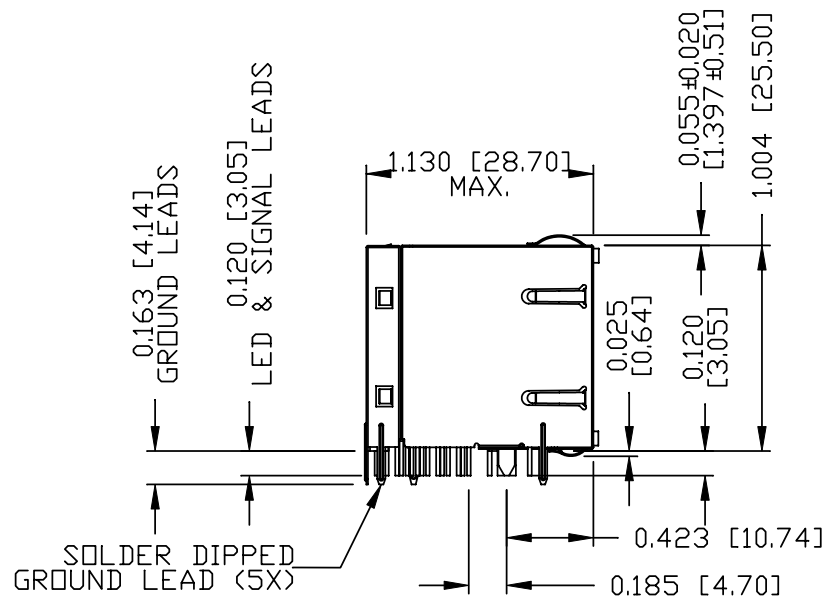
| | |
|-----------------------------------|------------------------------|
| STANDARD DIM. TOL. IN INCH | [] METRIC DIM. AS REFERENCE |
| .X | UNIT : INCH [mm] |
| .XX | SCALE : N/A |
| .XXX | REV. : D |

| | |
|------------------|-----------|
| UNIT : INCH [mm] | REV. : D |
| SCALE : N/A | SIZE : A4 |
| REV. : D | PAGE : 2 |



THE INFORMATION CONTAINED HEREIN IS CONSIDERED 'PROPRIETARY' TO BEL FUSE INC. AND SHALL NOT BE COPIED, REPRODUCED OR DISCLOSED WITHOUT THE WRITTEN APPROVAL OF BEL FUSE INC.

RoHS



NOTES:

PLASTIC HOUSING: THERMOPLASTIC PBT
 FLAMMABILITY RATING UL 94V-0
 CONTACT PLATING: 50 MICRO-INCH HARD GOLD PLATING OR EQUIVALENT.
 OUTPUT PINS: TIN-COATED COPPER WIRE, DIA 0.018 INCH.
 METAL SHIELD: NICKEL PLATED ON COPPER ALLOY.
 (ALL GROUND LEADS ARE SOLDER DIPPED)

1. JACK CAVITY CONFORMS TO FCC RULES AND REGULATIONS, PART 68 SUBPART F.
2. MARK PART WITH MFG LOGO, MFG NAME, PART NUMBER, DATE CODE AND PATENTED.
3. THE PRODUCT IS RoHS COMPLIANT.

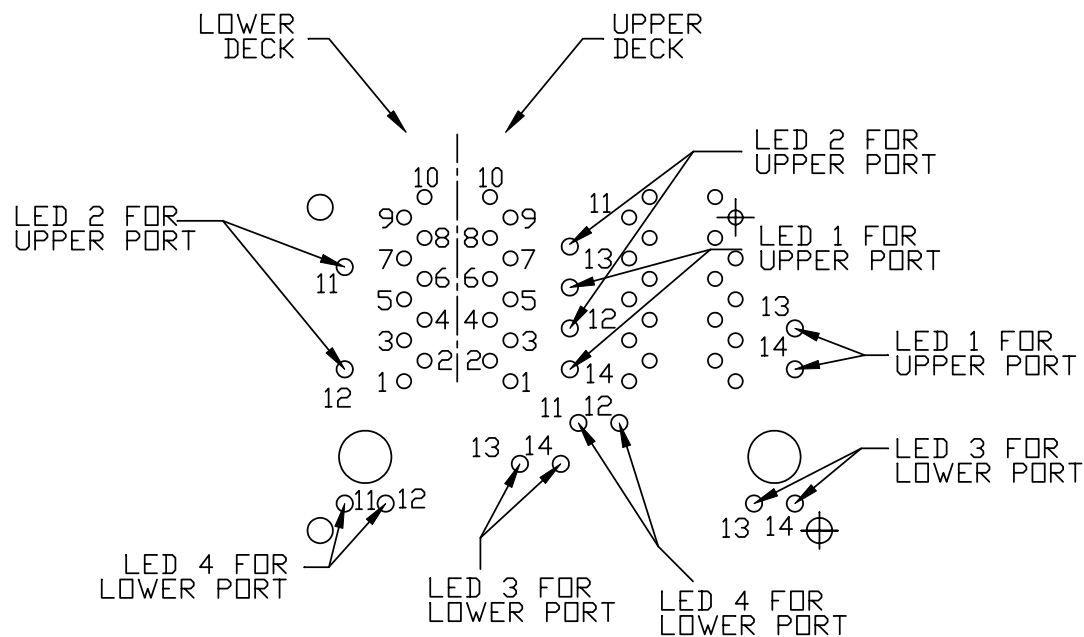
UL RECOGNIZED - FILE #E196366 AND E169987.
 4. THE PRODUCT IS PATENTED. THE PATENT NUMBER ARE U.S. PAT. 5,736,910 AND U.S. PAT. 6,840,817 AND U.S. PAT. 7,123,117.

| | | | | | | |
|-----------------------------|--------------------|--|--|-------------------------------|------------------------------|-----------|
| ORIGINATED BY ANTON LIAO | DATE 2012-07-09 | TITLE 2X2 gigabit MagJack® WITH UPPER AND LOWER LED (8 Cores) PATENTED | PART NO. / DRAWING NO. 0879-2G2R-54 | STANDARD DIM. TOL. IN INCH | [] METRIC DIM. AS REFERENCE | |
| | | | | | UNIT : INCH [mm] | REV. : D |
| DRAWN BY HE ZHEN | DATE 2012-07-09 | | FILE NAME 0879-2G2R-54_D.DWG | .X | SCALE : N/A | SIZE : A4 |
| | | | | .XX | | |
| | | | | .XXX | ±0.010 | |

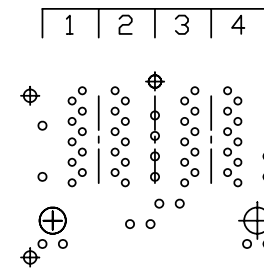


THE INFORMATION CONTAINED HEREIN IS CONSIDERED "PROPRIETARY" TO BEL FUSE INC. AND SHALL NOT BE COPIED, REPRODUCED OR DISCLOSED WITHOUT THE WRITTEN APPROVAL OF BEL FUSE INC.

RoHS

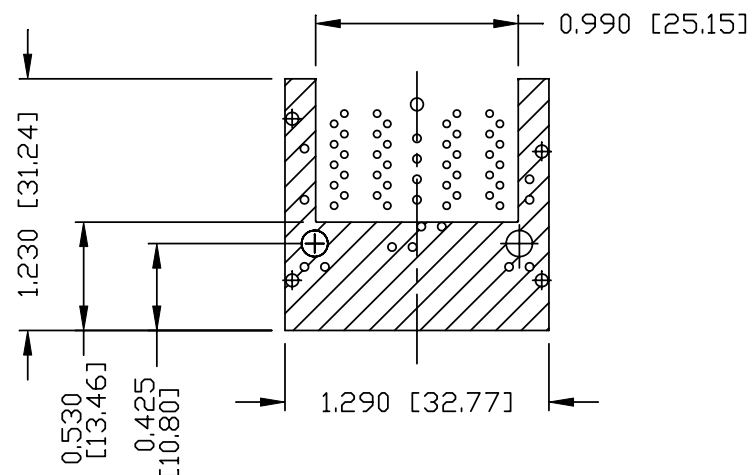


PORT ASSIGNMENT
(COMPONENT SIDE VIEW)



PIN-OUT INFORMATION
(COMPONENT SIDE VIEW)

| | |
|----|--------------|
| 10 | GND |
| 9 | TRDCT1/2/3/4 |
| 8 | TRD 4+ |
| 7 | TRD 4- |
| 6 | TRD 3+ |
| 5 | TRD 3- |
| 4 | TRD 2+ |
| 3 | TRD 2- |
| 2 | TRD 1+ |
| 1 | TRD 1- |



THE SHADED AREA ON THE CUSTOMER BOARD ARE RECOMMENDED TO BE CLEAR OFF ANY VIA HOLE OR COMPONENT PAD.

| | |
|-----------------------------|--------------------|
| ORIGINATED BY ANTON LIAO | DATE 2012-07-09 |
| DRAWN BY HE ZHEN | DATE 2012-07-09 |

TITLE 2X2 gigabit MagJack®
WITH UPPER AND LOWER LED
(8 Cores)
PATENTED

| |
|--|
| PART NO. / DRAWING NO. 0879-2G2R-54 |
| FILE NAME 0879-2G2R-54_D.DWG |

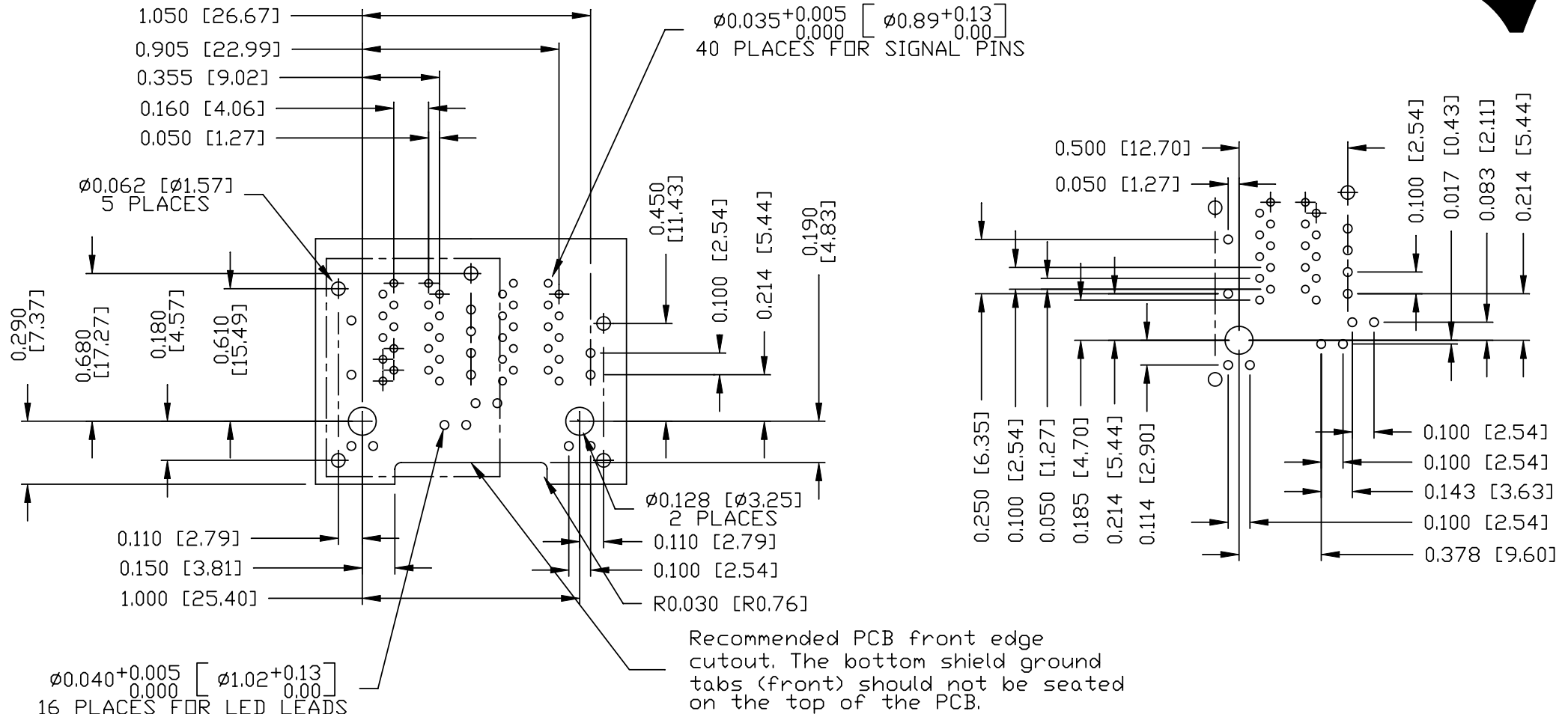
| STANDARD DIM. TOL. IN INCH | [] METRIC DIM. AS REFERENCE |
|-------------------------------|------------------------------|
| .X | UNIT : INCH [mm] |
| .XX | SCALE : N/A |
| .XXX | ±0.010 |

| |
|-----------|
| REV. : D |
| SIZE : A4 |
| PAGE : 4 |



THE INFORMATION CONTAINED HEREIN IS CONSIDERED "PROPRIETARY" TO BEL FUSE INC. AND SHALL NOT BE COPIED, REPRODUCED OR DISCLOSED WITHOUT THE WRITTEN APPROVAL OF BEL FUSE INC.

RoHS



SUGGESTED FOOTPRINT
(COMPONENT SIDE VIEW)

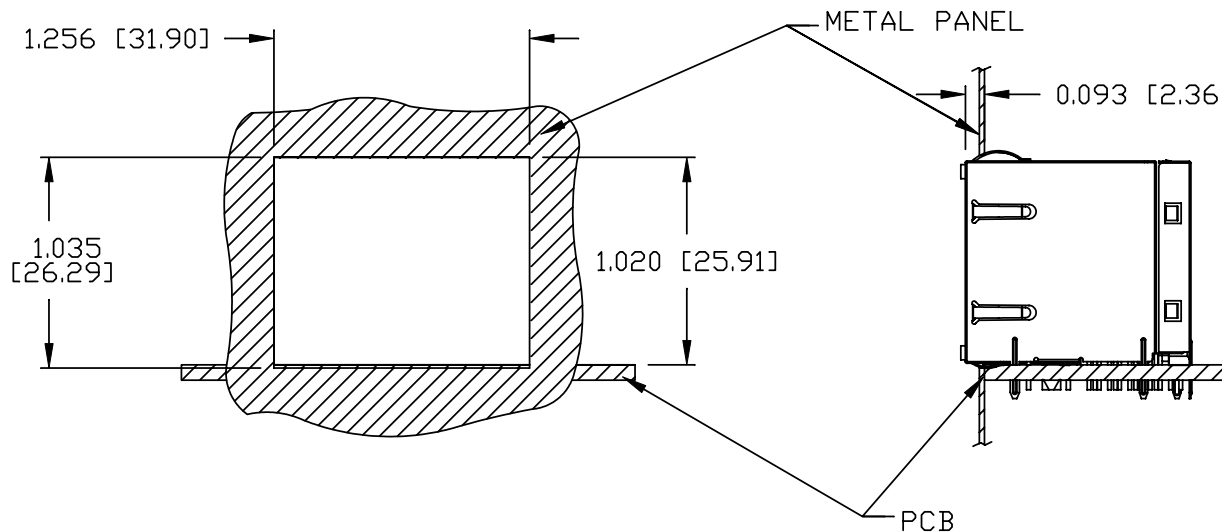
| | | | | | | | |
|-----------------------------|--------------------|--|--|---|---|-----------------------------------|---|
| ORIGINATED BY ANTON LIAO | DATE 2012-07-09 | TITLE 2X2 gigabit MagJack® WITH UPPER AND LOWER LED (8 Cores) PATENTED | PART NO. / DRAWING NO. 0879-2G2R-54 | STANDARD DIM. TOL. IN INCH .X .XX .XXX ±0.004 | [] METRIC DIM. AS REFERENCE UNIT : INCH [mm] SCALE : N/A | REV. : D SIZE : A4 PAGE : 5 | COMPONENTS FOR A CONNECTED PLANET |
| DRAWN BY HE ZHEN | DATE 2012-07-09 | FILE NAME 0879-2G2R-54_D.DWG | | | | | |

THE INFORMATION CONTAINED HEREIN IS CONSIDERED "PROPRIETARY" TO BEL FUSE INC. AND SHALL NOT BE COPIED, REPRODUCED OR DISCLOSED WITHOUT THE WRITTEN APPROVAL OF BEL FUSE INC.

RoHS



SUGGESTED PANEL OPENING



NOTE:

THE DISTANCE OF PANEL INSIDE SURFACE RELATIVE TO FRONT SURFACE OF PART IS ONLY A SUGGESTION. IN CASE THIS DISTANCE IS DIFFERENT, THE REQUIRED PANEL OPENING DIMENSIONS CHANGE ACCORDINGLY.

PACKING INFORMATION

PACKING TRAY : 0200-9999-P5 (TOP)
0200-9999-P6 (BOTTOM)

PACKING QUANTITY : 28 PCS FINISHED GOODS PER TRAY
7 TRAYS (196 PCS FINISHED GOODS) PER CARTON BOX

NOTE : CARDBOARDS ARE PLACED BETWEEN LAYERS OF PACKING TRAY INSIDE CARTON BOX (INCLUDE THE UPPERMOST AND LOWERMOST TRAY)

| | | | | | | | |
|------------------------------------|---------------------------|---|---|--------------------------------------|--|-----------------------------------|---|
| ORIGINATED BY ANTON LIAO | DATE 2012-07-09 | TITLE 2X2 gigabit MagJack® WITH UPPER AND LOWER LED (8 Cores) PATENTED | PART NO. / DRAWING NO. 0879-2G2R-54 | STANDARD DIM. TOL. IN INCH | [] METRIC DIM. AS REFERENCE | | bel COMPONENTS FOR A CONNECTED PLANET |
| DRAWN BY HE ZHEN | DATE 2012-07-09 | | FILE NAME 0879-2G2R-54_D.DWG | .X .XX .XXX | UNIT : INCH [mm] SCALE : N/A ⊕ - - - | REV. : D SIZE : A4 PAGE : 6 | |
| | | | | ±0.004 | | | |
| | | | | | | | |