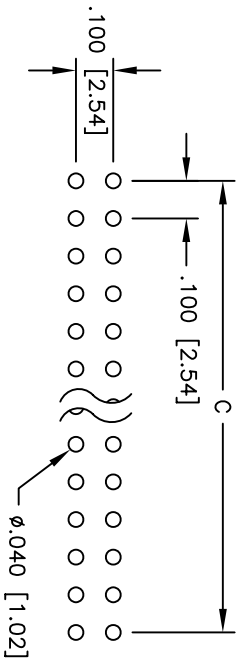
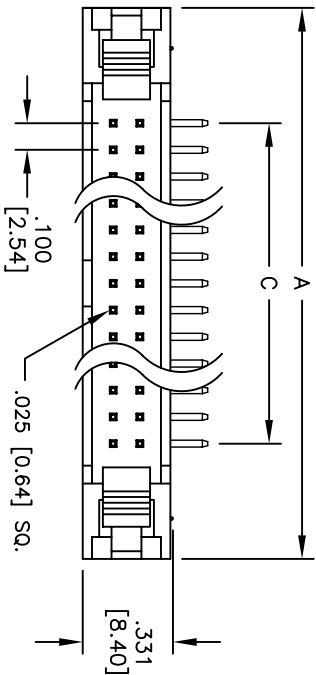
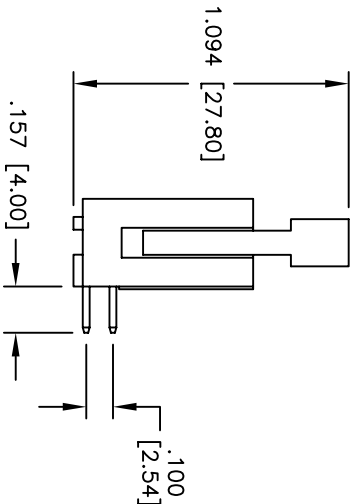
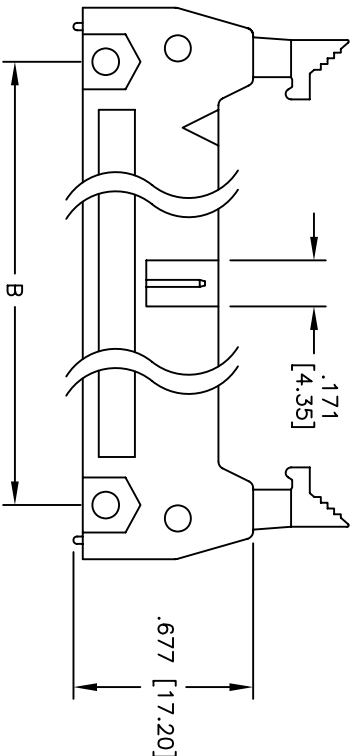


Rev	AWO #	Description	Date	Appr
-		RELEASED	3/29/05	

APPROVED: _____
DATE: _____ TITLE: _____



PCB LAYOUT



SPECIFICATIONS:

Material:

Insulator: PBT, rated UL 94V-0

Insulator color: Black

Contacts: Brass

Plating:

Gold flash over Nickel underplate overall

Electrical:

Operating voltage: 250 VAC max

Current rating: 3 Amps max

Contact resistance: 20 mohms max

Insulation resistance: 5,000 Mohms min @ 500 VDC

Dielectric withstanding voltage: 1,000 VAC for 1 minute

Temperature Rating:

Operating temperature: -55°C to +105°C

Environmental:

Lead free, RoHS compliant

Recommended soldering temp: 235°C for 5 seconds

Positions: 10, 14, 16, 20, 24, 26, 30, 34, 40, 50, 60, 64
A = .100 [2.54] x No. of Spaces + .860 [21.84]
B = .100 [2.54] x No. of Spaces + .460 [11.68]
C = .100 [2.54] x No. of Spaces

ADAM TECH

909 Rahway Avenue, Union, NJ 07083
Phone: 908-687-5000 Fax: 908-687-5710

LATCHED BOX HEADER, RIGHT ANGLE,
LONG EJECTOR LATCHES

UNLESS OTHERWISE SPECIFIED ALL DIMENSIONS ARE INCHES [MM] TOLERANCES: EXCEPT AS NOTED				TITLE			
INCHES 10 X ± .10 .XX ± .020 .XXX ± .015				HOLES ØX ±.10 ØXX ±.015 ØXXX ±.010			
APPROVALS				DATE			
DRAWN				SS			
CHECKED				3/29/05			
APPROVED				X			
SIZE				PART NO.			
X				MHR-XX-HUAL			
REF:				SCALE: NTS			
2				SHEET 1 OF 2			