

SPECIFICATIONS

Material:E-SEELS — Silicone rubber polymer type ASTM D 1418

Mounting Nut:E-SEELS: Brass, black-oxide

Temperature Range:E-SEELS: -80°F to +400°F

Pressure Range:Exceeds 15 psi internal and 1500 psi external.
(N5032B: 10 psi)

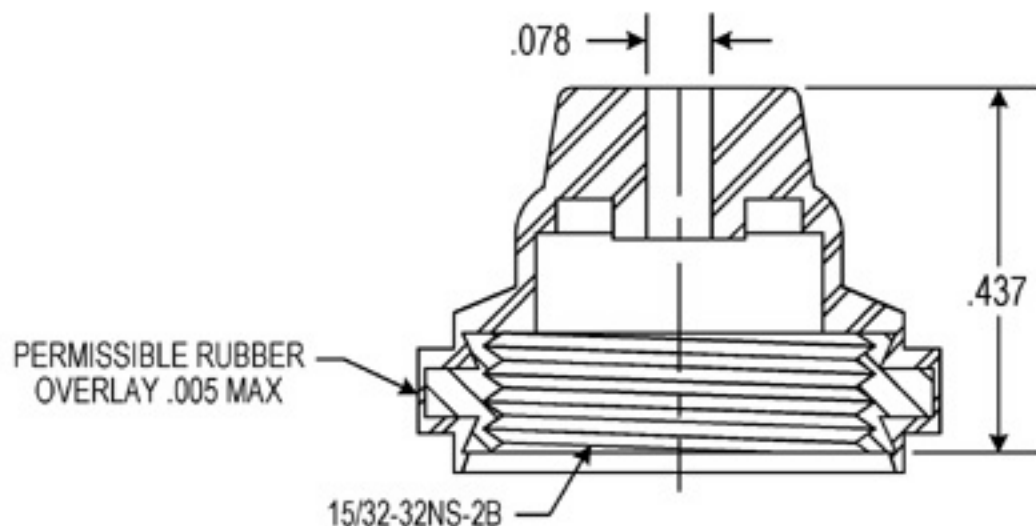
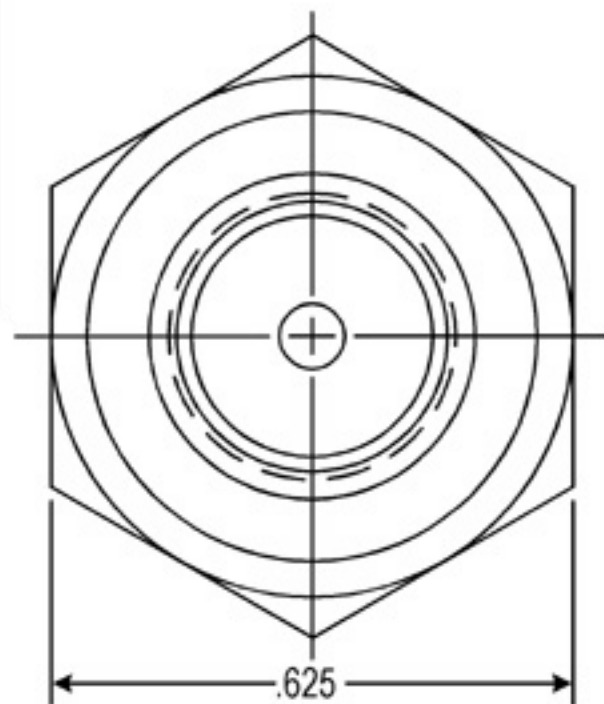
Operational Life:50,000 actuations (minimum).

Shelf Life:Excess of 25 years.

Resistant to:Salt spray, sunlight, ozone, weather, fungus, and most acids and lubricating oils

Agency Recognition:E-SEELS and HEXSEALS are UL-listed to UL Std. 50 types 1-13, and meet CSA standards.

Installation:If a reducing adaptor is required — see page 14 of HEXSEAL catalog HEX200 for part numbers and drawing.



E	CAD COMPUTER GENERATED			9-23/02
D	REDRAWN			10-11-74
REV.	DESCRIPTION			DATE
MAXIMUM AND MINIMUM MEASUREMENTS ARE STATED DIRECTLY ON EACH DIMENSION.		ب BOOT TOGGLE SWITCH E EXPOSED BAT (C1132/20)	ENG.	
			DWN.	M.M.
MAT'L: SILICONE RUBBER PER ASTM D 1418		APM-HEXSEAL CORPORATION	CHKD.	6-9-61
FINISH: BLACK			SCALE 4:1	DWG. NO. (C1132/20) E-SEEL®

THIS DRAWING COVERS PROPRIETARY ITEM AND IS THE PROPERTY OF THE APM-HEXSEAL CORPORATION.
THIS DRAWING IS NOT TO BE COPIED OR USED WITHOUT THE WRITTEN APPROVAL OF AN OFFICER OF THE APM-HEXSEAL CORPORATION.