



Series 514 TO Collet Sockets

FEATURES:

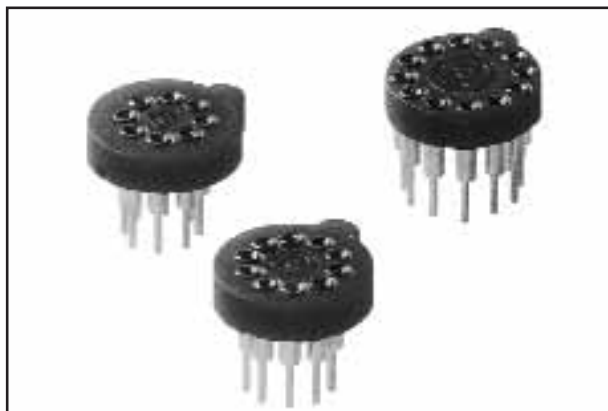
- Aries' TO sockets feature molded chamfer lead-ins for easy device insertion.
- High stand-off design for heat dissipation and easy cleaning.
- External polarization for positive location.

SPECIFICATIONS:

- Body material is black UL 94-V0 Glass-filled 4/6 Nylon.
- Pin body is Brass Alloy 360 1/2 hard per UNS C36000 ASTM-B16-00.
- Pin body plating:
-10TL is 200μ [5.08μm] min. 93/7 Tin/Lead per ASTM B545 over 100μ [2.54μm] min. Nickel per SAE-AMS-QQ-N-290.
-10 is 200μ [5.08μm] min. Tin per ASTM B545 Type 1 over 100μ [2.54μm] min. Nickel per SAE-AMS-QQ-N-290.
- 4-fingered collet contact is Beryllium Copper Alloy per UNS C17200 ASTM-B194-01.
- Contact plating is 30μ [7.6μm] min. Gold per MIL-G-45204 over 50μ [1.27μm] Nickel per SAE-AMS-QQ-N-290.
- Contact current rating=3 Amps.
- Operating temperature=-67°F to 221°F [-55°C to 105°C].
- Insertion Force=180 grams/pin; Withdrawal Force=90 grams/pin; Normal Force=140 grams/pin; based on a .018 [.46] diameter test lead.
- Socket accepts leads .015-.025 [.38-.64] in diameter, .137-.180 [3.48-4.57] long.

MOUNTING CONSIDERATIONS:

- Suggested PCB hole size=.030 ± .002 [.76 ± .05] dia.



Note: Aries specializes in custom design and production. In addition to the standard products shown on this page, special materials, platings, sizes, and configurations can be furnished, depending on quantities. Aries reserves the right to change product specifications without notice.

ORDERING INFORMATION

XX-514-10 XX

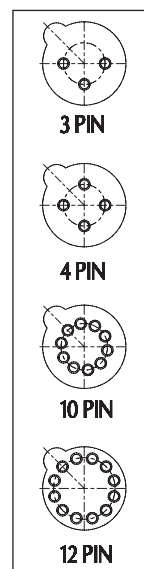
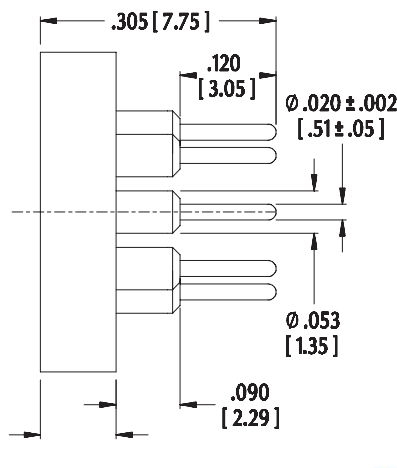
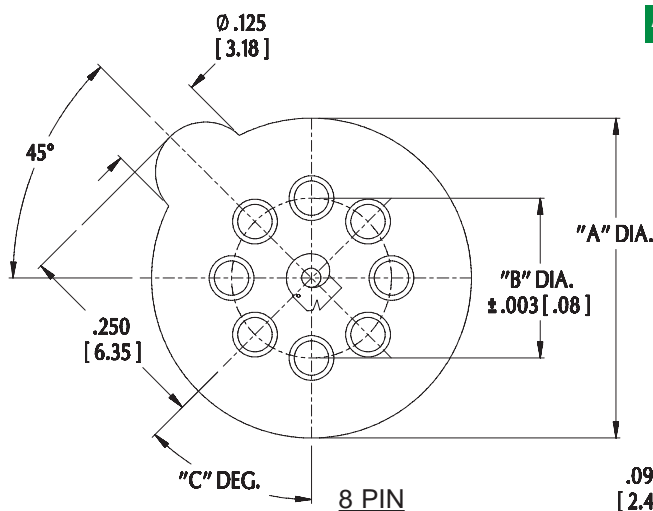
No. of pins (see table) | Series | Option: TL= Gold collet/ Tin/Lead Plated solder Tail

Gold collet/Tin shell plated solder tail

No. of Pins	Catalog No.	Outside Dia. "A"	Pin Pattern Dia. "B"	Pin to Pin Angle "C"
3	03-514-10	.400 [10.16]	.200 [5.08]	90
4	04-514-10	.400 [10.16]	.200 [5.08]	90
8	08S-514-10	.400 [10.16]	.200 [5.08]	45
8	08L-514-10	.400 [10.16]	.230 [5.84]	45
10	10-514-10	.400 [10.16]	.230 [5.84]	36
12	12-514-10	.405 [10.23]	.300 [7.62]	30

All tolerances ± .005 [.13] unless otherwise specified

ALL DIMENSIONS: INCHES [MILLIMETERS]



ARIES
ELECTRONICS, INC.

<http://www.arieselec.com> • info@arieselec.com

NORTH AMERICA
Frenchtown, NJ USA
TEL: (908) 996-6841
FAX: (908) 996-3891



EUROPE
TEL: +44 870 240 0249
FAX: +44 871 919 6033
europa@arieselec.com



14006
REV.D