

THE INFORMATION CONTAINED HEREIN IS CONSIDERED PROPRIETARY TO BEL FUSE INC. AND SHALL NOT BE COPIED, REPRODUCED OR DISCLOSED WITHOUT THE WRITTEN APPROVAL OF BEL FUSE INC.



OUTSIDE
AGENCY
LISTED

RoHS



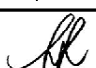
**COMPONENTS FOR A
CONNECTED
PLANET®**



DOCUMENT / PART NO.: 08261X1TM1-F

LONG ITEM NO.: 0826-1X1T-M1-F

TITLE: PRODUCT SPECIFICATION

ISSUE	DESCRIPTION OF CHANGE							REVIEWED BY				APPROVED BY				ECN#			
A	FIRST ISSUE							BILL CHEN				SHUN LEUNG (2007-03-19)							
B	ADD NOTES IN SCHEMATIC PAGE							BILL CHEN				SHUN LEUNG (2007-07-06)				RD2070101			
C	UPDATE THE PART LENGTH & PANEL OPENING DIMENSIONS AND ADD A SHADE AREA VIEW							ZX HUANG				SHUN LEUNG (2008-12-23)				RD2080342			
D	ADD PATENTED INFORMATION AND UPDATE ROHS DESCRIPTION & OTHER GENERAL REQUIREMENT							ANTON LIAO				 Leung, Wai-shun 2012.08.15 09:24:33 108001				RD2120170			
PAGE	1	2	3	4	5	6													
REV.	D	D	D	D	D	D													
PAGE																			
REV.																			

THE INFORMATION CONTAINED HEREIN IS CONSIDERED 'PROPRIETARY' TO BEL FUSE INC. AND SHALL NOT BE COPIED, REPRODUCED OR DISCLOSED WITHOUT THE WRITTEN APPROVAL OF BEL FUSE INC.

LED1 POLARITY			LED2 POLARITY		
PIN 17	PIN 18	COLOR	PIN 19	PIN 20	COLOR
-	+	YELLOW	+	-	ORANGE
			-	+	GREEN

RoHS



ELECTRICAL CHARACTERISTICS @ 25°C

TURNS RATIO

TP1	1CT : 1CT ±2%
TP2	1CT : 1CT ±2%
TP3	1CT : 1CT ±2%
TP4	1CT : 1CT ±2%

DCL @ 100kHz/100mVRMS
8mA DC BIAS

350µH MIN.

INS. LOSS

0.1MHz TO 1MHz	-1.1 dB MAX
1MHz TO 65MHz	-0.5 dB MAX
65MHz TO 100MHz	-0.8 dB MAX
100MHz TO 125MHz	-1.2 dB MAX

RET. LOSS (MIN)

0.5MHz-40MHz	-18 dB
40MHz-100MHz	-12+20LOG(f/80MHz) dB

CROSS TALK

100kHz - 100MHz -33+20LOG(f/100MHz)dB MIN

CM TO CM REJ

100kHz - 100MHz -30 dB MIN

CM TO DM REJ

100kHz - 100MHz -35 dB MIN

HIPOT (Isolation Voltage) 2250 VDC

100% OF PRODUCTION TESTED TO COMPLY WITH
IEEE 802.3 ISOLATION REQUIREMENTS.

LED 1

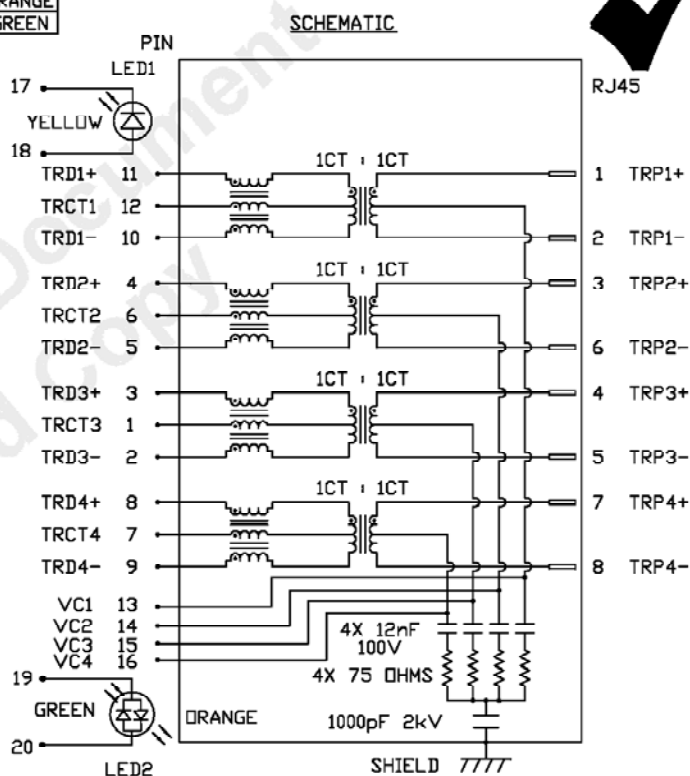
VF (FORWARD VOLTAGE) IF=20mA YELLOW 2.1V TYP.
AD (DOMINANT WAVELENGTH) IF=20mA YELLOW 590nm TYP.

LED 2

VF (FORWARD VOLTAGE) IF=20mA GREEN 2.2V TYP.
AD (DOMINANT WAVELENGTH) IF=20mA ORANGE 2.0V TYP.
AD (DOMINANT WAVELENGTH) IF=20mA GREEN 565nm TYP.
AD (DOMINANT WAVELENGTH) IF=20mA ORANGE 610nm TYP.BALANCED DC LINE CURRENT 350 mA MAX. @ 57 VDC CONTINUOUS
500 mA MAX. @ 57 VDC FOR 200 MILLISECONDS

OPERATING TEMPERATURE -40°C TO 85°C

ALL OTHER ELECTRICAL MEASUREMENTS REFERENCED AT 21°C



ORIGINATED BY	DATE	TITLE	PART NO. / DRAWING NO.	STANDARD DIM.	[] METRIC DIM. AS REFERENCE
CHOW WANCHUNG	2012-07-11	glgabit MagJack® (Ext.Temp. RANGE For VOIP)	08261X1TM1-F	TOL. IN INCH	UNIT : INCH [mm] REV. : D
DRAWN BY	DATE		FILE NAME		
TAN QIGUANG	2012-07-11	0826-1X1T-M1-F PATENTED	08261X1TM1-F_D.DWG	.X .XX .XXX	SCALE : N/A SIZE : A4 PAGE : 2

bel

COMPONENTS OF A
CONNECTED
PLANT

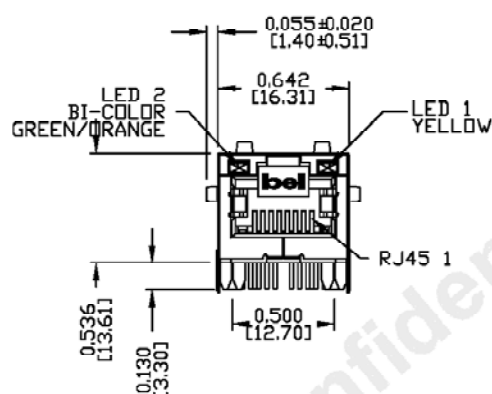
DC002(2)081111

This document is electronically generated. This is a controlled copy if used internally

THE INFORMATION CONTAINED HEREIN IS CONSIDERED 'PROPRIETARY' TO BEL FUSE INC. AND SHALL NOT BE COPIED, REPRODUCED OR DISCLOSED WITHOUT THE WRITTEN APPROVAL OF BEL FUSE INC.

MECHANICAL SPECIFICATION

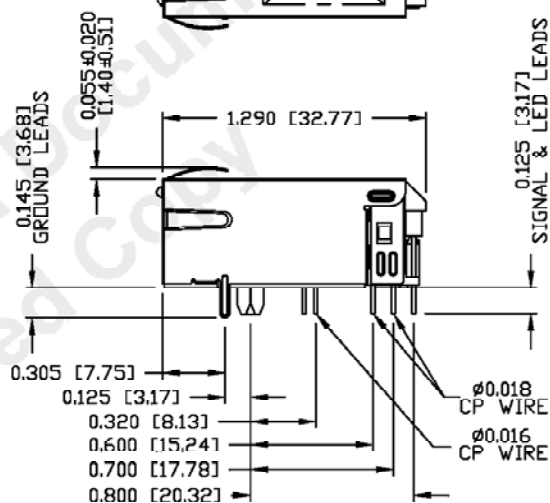
RoHS





NOTES:

PLASTIC HOUSING: THERMOPLASTIC PA
 FLAMMABILITY RATING UL 94V-0
 CONTACTS: 50 MICRON-INCH HARD GOLD PLATING OR EQUIVALENT.
 OUTPUT PINS: TIN-COATED COPPER WIRE, DIA 0.018 INCH.
 METAL SHIELD: NICKEL PLATED ON COPPER ALLOY.
 (ALL GROUND LEADS ARE SOLDER DIPPED)

1. MARK PART WITH MFG LOGO, MFG NAME, PART NUMBER, DATE CODE AND PATENTED.



1. USUL RECOGNIZED - FILE #E196366 AND E169987.
 2. THE PRODUCT IS RoHS COMPLIANT.
 JACK CAVITY CONFORMS TO FCC RULES AND REGULATIONS.
 3. THE PRODUCT IS PATENTED. THE PATENT NUMBER ARE U.S. PAT. 5,736,910 AND U.S. PAT. 7,123,117

ORIGINATED BY ANTON LIAO	DATE 2012-07-11	TITLE glgabit MagJack® (Ext.Temp. RANGE For VOIP) 0826-1X1T-M1-F PATENTED	PART NO. / DRAWING NO. 08261X1TM1-F	STANDARD DIM. TOL. IN INCH	[] METRIC DIM. AS REFERENCE	 COMPONENTS CONNECTED FLAMMABLE
DRAWN BY HE ZHEN	DATE 2012-07-11		FILE NAME 08261X1TM1-F_D.DWG	.X XX XXX 40.010	UNIT : INCH [mm] SCALE : N/A  N/A SIZE : A4 PAGE : 3	

DC002(2)081111

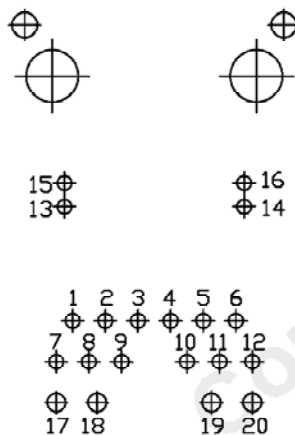
This document is electronically generated. This is a controlled copy if used internally

THE INFORMATION CONTAINED HEREIN IS CONSIDERED "PROPRIETARY" TO BEL FUSE INC. AND SHALL NOT BE COPIED, REPRODUCED OR DISCLOSED WITHOUT THE WRITTEN APPROVAL OF BEL FUSE INC.

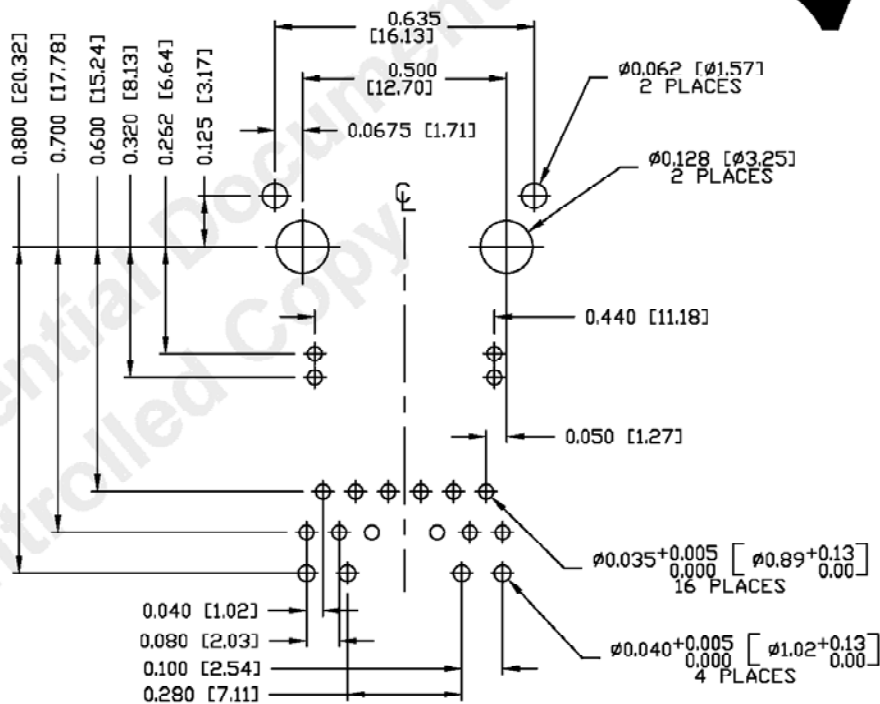
RoHS



PIN ASSIGNMENT - EACH PORT
COMPONENT SIDE VIEW



RECOMMENDED PCB FOOTPRINT
COMPONENT SIDE VIEW



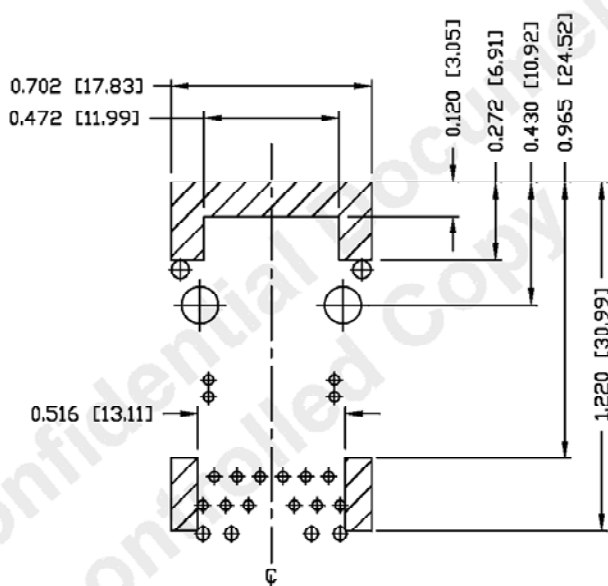
ORIGINATED BY ANTON LIAO	DATE 2012-07-11	TITLE glgabit MagJack® (Ext.Temp. RANGE For VOIP) 0826-1X1T-M1-F PATENTED	PART NO. / DRAWING NO. 08261X1TM1-F	STANDARD DIM. TOL. IN INCH .X .XX .XXX ±0.004	[] METRIC DIM. AS REFERENCE UNIT : INCH [mm] SCALE : N/A	REV. : D SIZE : A4 PAGE : 4	
DRAWN BY HE ZHEN	DATE 2012-07-11		FILE NAME 08261X1TM1-F_D.DWG				

DC002(2)081111

This document is electronically generated. This is a controlled copy if used internally

THE INFORMATION CONTAINED HEREIN IS CONSIDERED
"PROPRIETARY" TO BEL FUSE INC. AND SHALL NOT BE
COPIED, REPRODUCED OR DISCLOSED WITHOUT THE
WRITTEN APPROVAL OF BEL FUSE INC.

RoHS

**NOTES**

THE SHADED AREA ON THE CUSTOMER BOARD ARE
RECOMMENDED TO BE CLEAR OFF ANY VIA HOLE OR
COMPONENT PAD.

ORIGINATED BY ANTON LIAO	DATE 2012-07-11	TITLE glgabit MagJack® (Ext.Temp. RANGE For VOIP) 0826-1X1T-M1-F PATENTED	PART NO. / DRAWING NO. 08261X1TM1-F	STANDARD DIM. TOL. IN INCH		[] METRIC DIM. AS REFERENCE		UNIT : INCH [mm]	REV. : D	SCALE : N/A	SIZE : A4	PAGE : 5	
				.X									
DRAWN BY HE ZHEN	DATE 2012-07-11		FILE NAME 08261X1TM1-F_D.DWG	.XX									
				.XXX		±0.004							

DC002(2)081111

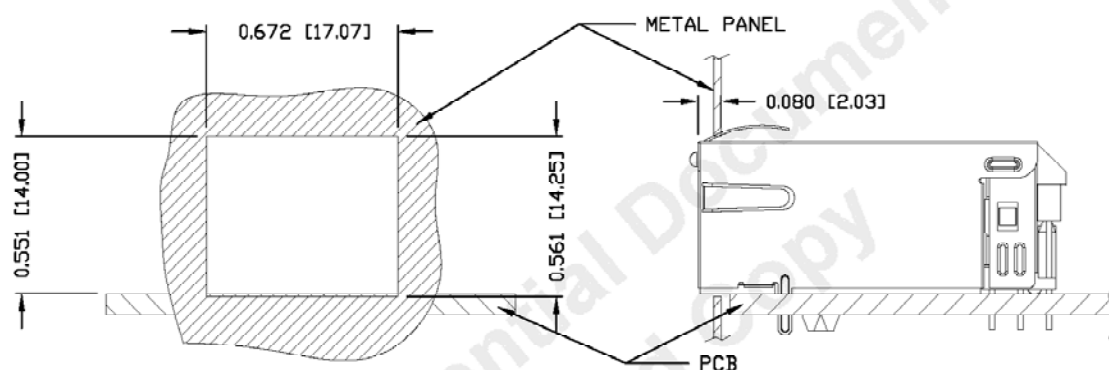
This document is electronically generated. This is a controlled copy if used internally

THE INFORMATION CONTAINED HEREIN IS CONSIDERED
"PROPRIETARY" TO BEL FUSE INC. AND SHALL NOT BE
COPIED, REPRODUCED OR DISCLOSED WITHOUT THE
WRITTEN APPROVAL OF BEL FUSE INC.

RoHS



SUGGESTED PANEL OPENING



NOTE:

THE DISTANCE OF PANEL INSIDE SURFACE RELATIVE TO FRONT SURFACE OF PART IS ONLY A SUGGESTION.
IN CASE THIS DISTANCE IS DIFFERENT, THE REQUIRED PANEL OPENING DIMENSIONS CHANGE ACCORDINGLY.

PACKING INFORMATION

PACKING TRAY : 0200-9999-F6 (TOP)

0200-9999-F7 (BOTTOM)

PACKING QUANTITY : 40 PCS FINISHED GOODS PER TRAY

10 TRAYS (400 PCS FINISHED GOODS) PER CARTON BOX

NOTE : CARDBOARDS ARE PLACED BETWEEN LAYERS OF PACKING TRAY INSIDE CARTON BOX
(INCLUDE THE UPPERMOST AND LOWERMOST TRAY)

ORIGINATED BY	DATE	TITLE	PART NO. / DRAWING NO.	STANDARD DIM. TOL. IN INCH	[] METRIC DIM. AS REFERENCE	
ANTON LIAO	2012-07-11	gigabit MagJack® (Ext.Temp. RANGE For VOIP)	08261X1TM1-F	X	UNIT : INCH [mm]	REV. : D
DRAWN BY	DATE		FILE NAME	XX	SCALE : N/A	SIZE : A4
HE ZHEN	2012-07-11	0826-1X1T-M1-F	08261X1TM1-F_D.DWG	XXX	±0.004	PAGE : 6

bel
CONFORMANT
COMPOSITE
PLASTIC

DC002(2)081111

This document is electronically generated. This is a controlled copy if used internally