

Features

- 1-1/4" Rectangular / Multiturn Wirewound / Industrial / Sealed
- Panel mount option available
- Listed on the QPL per MIL-PRF-27208
- For trimmer applications/processing guidelines, [click here](#)

RT12 - Trimpot® Trimming Potentiometer

Electrical Characteristics

Standard Resistance Range 10 to 20K ohms
 (see standard resistance table)
 Resistance Tolerance ±5 % std.
 Absolute Minimum Resistance 0.1 % or 1 ohm max.
 (whichever is greater)
 Noise 100 ohms ENR max.
 Resolution..... See Resistance Table
 Insulation Resistance 500 vdc.
 1,000 megohms min.
 Dielectric Strength
 Sea Level 1,500 vac
 70,000 Feet..... 400 vac
 Adjustment Travel..... 22 turns nom.

Environmental Characteristics

Power Rating @ 70 °C 1 watt
 Power Rating @ 150 °C 0 watt
 Temperature Range.....-55 °C to +150 °C
 Temperature Coefficient ±50 ppm/°C
 Seal Test..... 85 °C Fluorinert*
 (pin styles only)
 Humidity..... MIL-STD-202 Method 106
 96 hours
 2 % ΔTR, 100 Megohms IR)
 Vibration 30 G (1 % ΔTR; 0.5 %
 + resolution DVR)
 Shock..... 100 G (1 % ΔTR; 0.5 %
 + resolution ΔVR)
 Load Life....1,000 hours 1 watt @ 70 °C
 (2 % ΔTR)
 Rotational Life..... 200 cycles (2 % ΔTR)

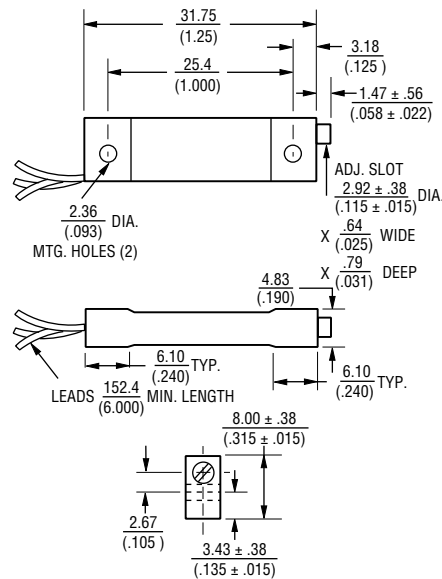
Physical Characteristics

Torque..... 5.0 oz-in. max.
 Mechanical Stops Wiper idles
 Terminals Solderable pins and lugs
 Flexible leads (7 strands of 30 AWG)
 Weight 0.10 oz.
 Marking..... Manufacturer's trademark,
 resistance code, terminal numbers,
 date code, manufacturer's model
 number and style
 Wiper 50 % (Actual TR) ±10 %
 Flammability U.L. 94V-0
 Standard Packaging
 P&Y Style 10 pcs. per tube
 L Style 25 pcs. per bag
 Adjustment Tool H-90

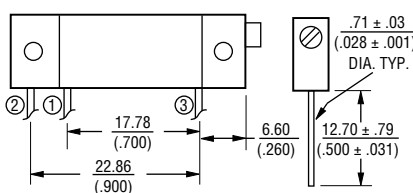
Product Dimensions

RT12C2L

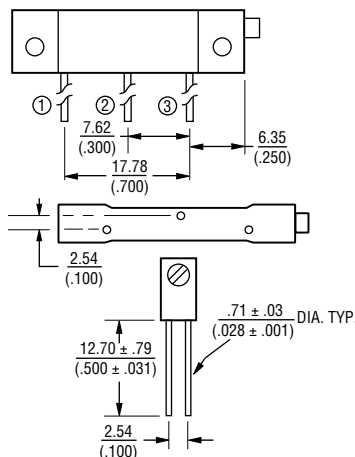
Common Dimensions



RT12C2P



RT12C2Y



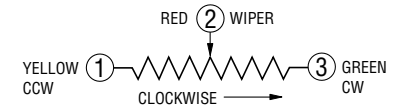
How To Order

MIL-PRF-27208 **RT12 C2 P 101**

Model _____
 Characteristic _____
 C = ±50 ppm/°C Temp. Coeff. Max.
 2 = 85 °C Rating Temp.
 150 °C Max. Operating Temp.
 Terminal Style _____
 Resistance Code _____

Standard Resistance Table

Resistance (Ohms)	Resistance Code	Nominal Resolution (Percent)
10	100	2.40
20	200	1.90
50	500	1.40
100	101	1.00
200	201	0.86
500	501	0.89
1,000	102	0.72
2,000	202	0.58
5,000	502	0.43
10,000	103	0.34
20,000	203	0.31



DIMENSIONS: $\frac{\text{MM}}{\text{(INCHES)}}$
 TOLERANCES: ± $\frac{0.25}{(0.01)}$ EXCEPT WHERE NOTED