

Non-Adhesive Continuous Tag Stock (B-551)

For safety, lockout and general purpose hang-tagging.

- Non-adhesive, semi-rigid tag stock
- Easy to hole-punch; optional snap-in grommets available
- Meets OSHA 50 lb. pullout spec for lockout tags

Service temp: -40°F to 193°F Average Outdoor Durability: up to 2 years
Thickness: 0.35mm



Fits Printer Model(s)	Diagram	Catalog #	Color	Label Width A Inch (mm)	Roll Length B Inch (mm)	Tags Per Roll	Rec. Ribbon
BBP31, BBP33	Fig. 33	B30C-2500-551-WT	White	2.500 (63.5)	50ft. (15.2m)	- continuous supply -	B30-R10000
BBP31, BBP33	Fig. 33	B30C-3250-551-WT	White	3.250 (82.6)	50ft. (15.2m)	- continuous supply -	B30-R10000
BBP31, BBP33	Fig. 33	B30C-4250-551-WT	White	4.250 (107.9)	50ft. (15.2m)	- continuous supply -	B30-R10000

Figure 33



Retro Reflective Tape (B-584)

For highly reflective identification that shines back brightly when struck by light.

- Ideal for labeling outdoor utility poles and pedestals, jobsite equipment and roof-top equipment
- Recommended for low light or inclement weather conditions

Service temp: -40°F to 158°F
Application temp: 0°F to 158°F (yellow & orange), 50°F to 158°F (silver)
Average Outdoor Durability: 4 to 6 years

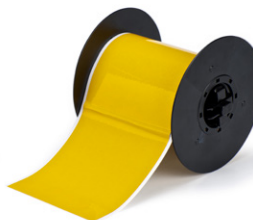


Figure 33



Fits Printer Model(s)	Diagram	Catalog #	Color	Label Width A Inch (mm)	Roll Length B Inch (mm)	Labels Per Roll	Rec. Ribbon
BBP31, BBP33	Fig. 33	B30C-1125-584-SL	Silver	1.125 (28.6)	50ft. (15.2m)	- continuous supply -	B30-R10000
BBP31, BBP33	Fig. 33	B30C-2250-584-SL	Silver	2.250 (57.5)	50ft. (15.2m)	- continuous supply -	B30-R10000
BBP31, BBP33	Fig. 33	B30C-4000-584-SL	Silver	4.000 (101.6)	50ft. (15.2m)	- continuous supply -	B30-R10000
BBP31, BBP33	Fig. 33	B30C-1125-584-YL	Yellow	1.125 (28.6)	50ft. (15.2m)	- continuous supply -	B30-R10000
BBP31, BBP33	Fig. 33	B30C-2250-584-YL	Yellow	2.250 (57.5)	50ft. (15.2m)	- continuous supply -	B30-R10000
BBP31, BBP33	Fig. 33	B30C-4000-584-YL	Yellow	4.000 (101.6)	50ft. (15.2m)	- continuous supply -	B30-R10000
BBP31, BBP33	Fig. 33	B30C-1125-584-OR	Orange	1.125 (28.6)	50ft. (15.2m)	- continuous supply -	B30-R10000
BBP31, BBP33	Fig. 33	B30C-2250-584-OR	Orange	2.250 (57.5)	50ft. (15.2m)	- continuous supply -	B30-R10000
BBP31, BBP33	Fig. 33	B30C-4000-584-OR	Orange	4.000 (101.6)	50ft. (15.2m)	- continuous supply -	B30-R10000

BradyGlo™ High-Intensity Photoluminescent Tape (B-526)

For glow-in-the-dark identification up to 10 hours!

- Designed for directional and evacuation marking
- Ideal for marking emergency utility shut-offs, fire extinguishers, alarm pulls, and vital equipment controls
- Complies with indoor use requirements specified in RS 6-1 and 6-1A of New York Local Law 26

Service temp: -40°F to 140°F Application temp: 40°F to 140°F



Fits Printer Model(s)	Diagram	Catalog #	Color	Label Width A Inch (mm)	Roll Length B Inch (mm)	Labels Per Roll	Rec. Ribbon
BBP31, BBP33	Fig. 33	B30C-1125-526	Luminous Green	1.125 (28.6)	50ft. (15.2m)	- continuous supply -	B30-R10000
BBP31, BBP33	Fig. 33	B30C-2250-526	Luminous Green	2.250 (57.5)	50ft. (15.2m)	- continuous supply -	B30-R10000
BBP31, BBP33	Fig. 33	B30C-4000-526	Luminous Green	4.000 (101.6)	50ft. (15.2m)	- continuous supply -	B30-R10000

Figure 33

