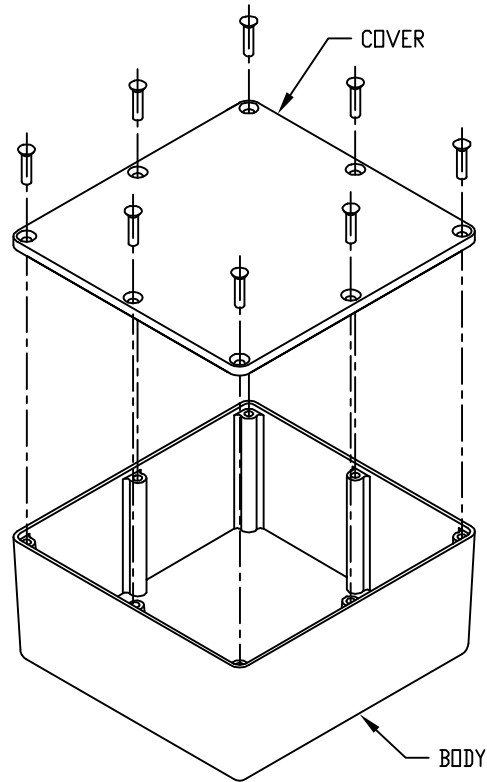
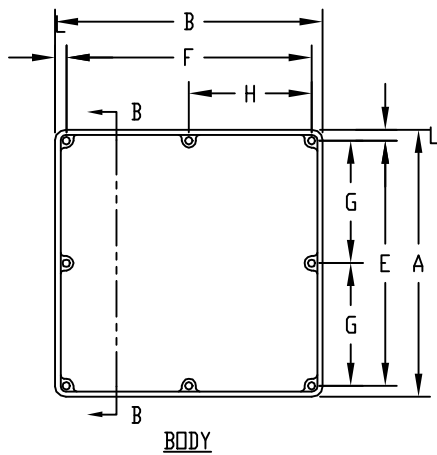
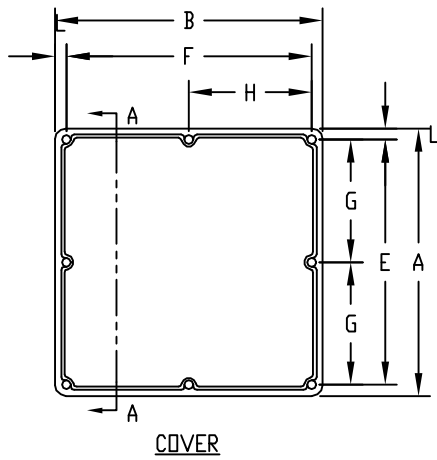


PART NAME

ECONOBOXES

PART No.

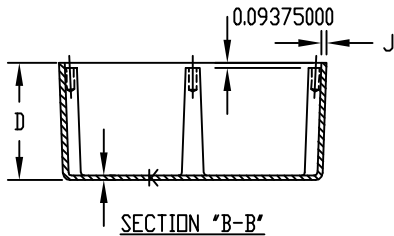
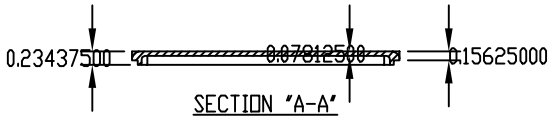
CU-470 TO CU-479 & CU-470-G TO CU-479-G



MATERIAL:  
ADC-10 DIE CAST ALUMINUM

FINISH:  
NATURAL (NO SUFFIX)  
GRAY (SUFFIX -G)

ALL INTERNAL FILLETS 0.062 RADIUS  
ALL INTERNAL ROUNDS 0.125 RADIUS  
ALL EXTERNAL ROUNDS 0.125 RADIUS  
ALL BOXES ASSEMBLED WITH #6-32 FLAT HD. SCREWS



\* ASSEMBLED HEIGHT

PART NO.	PART NO.	A	B	* C	D	E	F	G	H	J	K	L
CU-470	CU-470-G	2.000	2.000	1.250	1.094	1.625	1.625	---	---	0.065	0.065	0.188
CU-471	CU-471-G	4.330	3.250	1.750	1.594	3.955	2.875	---	---	0.094	0.078	0.188
CU-472	CU-472-G	4.750	3.150	2.330	2.174	4.375	2.775	---	---	0.094	0.078	0.188
CU-473	CU-473-G	4.688	3.688	1.340	1.184	4.313	3.313	---	---	0.094	0.078	0.188
CU-474	CU-474-G	4.750	4.750	2.330	2.174	4.375	4.375	---	---	0.094	0.078	0.188
CU-475	CU-475-G	4.750	4.750	3.750	3.594	4.375	4.375	---	---	0.094	0.078	0.188
CU-476	CU-476-G	6.000	3.250	2.000	1.844	5.610	2.860	2.805	---	0.094	0.078	0.195
CU-477	CU-477-G	7.390	4.703	1.500	1.344	7.000	4.313	3.500	---	0.094	0.078	0.195
CU-478	CU-478-G	7.500	7.500	2.620	2.464	7.110	7.110	3.555	3.555	0.094	0.078	0.195
CU-479	CU-479-G	4.375	3.375	2.136	1.980	4.000	2.000	---	---	0.065	0.078	0.188