



QUALITY ENCLOSURES

Large Cabinet Racks Series 2000



Here are electronic enclosures that do more than house equipment. The sheer square line of the Series 2000, its symmetrical styling is the result of experience and perception. Bud designers have. All Series 2000 cabinet racks include welded frame, sides, top and rear door.

Design Features

- *Anodized aluminum extrusion top trim.
- *All welded 14 gauge steel frame with "U" shaped 16 gauge steel panel mounting rail supports.
- *Door, 20 gauge steel.
- Sides and top, 18 gauge steel.
- *Adjustable front and rear panel mounting rails tapped #10-32 on E.I.A. universal spacing. (use #7346 screws - order separately)
- *Accommodates 19" wide E.I.A. panels.
- *Bottom pierced for RC-7758 casters.
- *1.109 inch diameter knockout holes in base.
- *1200# equipment load capacity.

Bonus Features

- *Interiors are accessible from front and rear for easy installation and maintenance of components.
- *Readily removable rear door.
- *Shipped completely assembled.

Finishes

Grey Texture (GT), Royal Blue Texture (BT). Available in other Bud textured finishes at no extra cost.

SERIES 2000 Cabinet Racks (19" Panel Width)

Non-Ventilated

Ventilated

Panel
Space
(PS)

Outside
Height
(A)

Outside
Width
(B)

Outside
Depth
(C)

Clear
Inside
Depth

Weight
(Lbs.)

Catalog No.	Accessories
E-2000	Acc.
E-2003	Acc.
E-2004	Acc.
E-2005	Acc.
E-2006	Acc.
E-2007	Acc.
E-2008	Acc.
E-2011	Acc.
E-2012	Acc.
E-2013	Acc.
E-2014	Acc.
E-2015	Acc.
E30-2000	Acc.
E30-2003	Acc.
E30-2004	Acc.
E30-2005	Acc.
E30-2006	Acc.
E30-2007	Acc.

Catalog No.	Accessories	Drawings					(D)	
N/A	N/A	N/A	21.00"	30.25"	24.19"	23.87"	20.50"	119
N/A	N/A	N/A	42.00"	51.25"	24.19"	23.87"	20.50"	168
N/A	N/A	N/A	52.50"	61.75"	24.19"	23.87"	20.50"	195
N/A	N/A	N/A	61.25"	70.50"	24.19"	23.87"	20.50"	216
N/A	N/A	N/A	70.00"	79.25"	24.19"	23.87"	20.50"	233
N/A	N/A	N/A	78.75"	88.00"	24.19"	23.87"	20.50"	260
E-2024	Acc.		21.00"	30.25"	24.19"	27.37"	24.00"	129
E-2027	Acc.		42.00"	51.25"	24.19"	27.37"	24.00"	179
E-2028	Acc.		52.50"	61.75"	24.19"	27.37"	24.00"	215
E-2029	Acc.		61.25"	70.50"	24.19"	27.37"	24.00"	234
E-2030	Acc.		70.00"	79.25"	24.19"	27.37"	24.00"	244
E-2031	Acc.		78.75"	88.00"	24.19"	27.37"	24.00"	268
N/A	N/A	N/A	21.00"	30.25"	24.19"	32.62"	29.25"	150
N/A	N/A	N/A	42.00"	51.25"	24.19"	32.62"	29.25"	217
N/A	N/A	N/A	52.50"	61.75"	24.19"	32.62"	29.25"	248
N/A	N/A	N/A	61.25"	70.50"	24.19"	32.62"	29.25"	259
N/A	N/A	N/A	70.00"	79.25"	24.19"	32.62"	29.25"	303
N/A	N/A	N/A	78.75"	88.00"	24.19"	32.62"	29.25"	307



BUD INDUSTRIES INC.

P.O. Box 998

Willoughby, Ohio 44094

Phone: 440-946-3200 Fax: 440-951-4015

E-Mail: saleseast@budind.com

PART NAME SERIES 30-2000 UPRIGHT CABINET RACK

PART No.

E30-2000 TD E30-2007

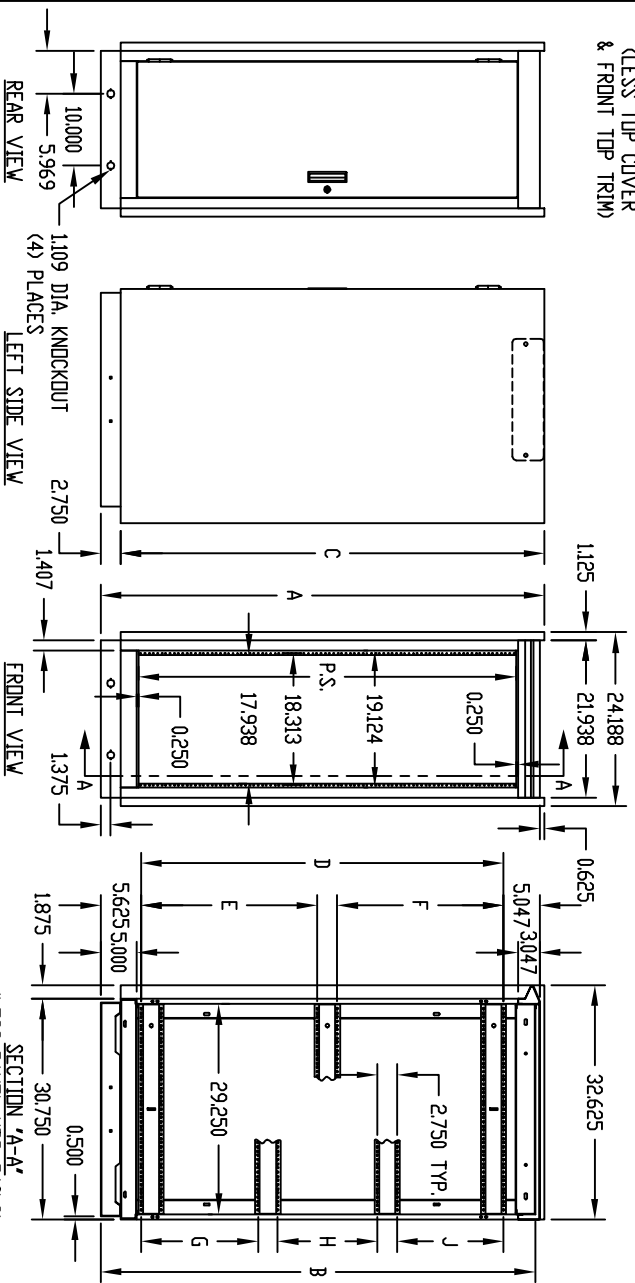
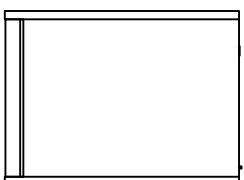
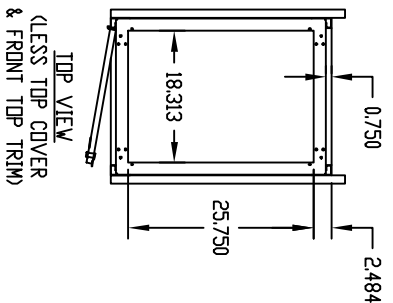
REV. 1-2-02 DATE

FINISH:

FRAME ASSEMBLY, SIDES, DOOR & TOP COVER _____ GRAY TEXTURE DR ROYAL BLUE TEXTURE
 PANEL MOUNTING RAILS _____ SMOOTH BLACK
 FRONT TOP TRIM _____ METALLIC GRAY

MATERIAL:

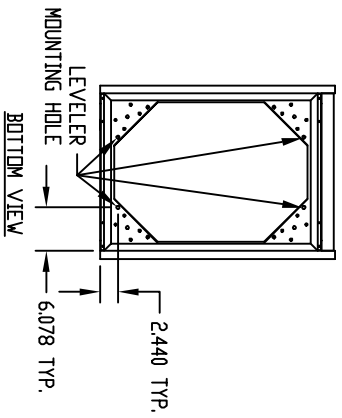
PANEL MOUNTING RAILS _____ 12 GA. STEEL
 FRAME TOP, BASE ASSEMBLY, FILLERS & VERTICAL RAILS _____ 14 GA. STEEL
 RAIL SUPPORTS _____ 16 GA. STEEL
 TOP COVER & SIDES _____ 18 GA. STEEL
 DOOR & FRONT TOP TRIM _____ 20 GA. STEEL



PANEL MOUNTING RAILS (FRONT & REAR) ARE TAPPED #10-32 ON C.T.A. UNIVERSAL SPACING AND ARE FULLY ADJUSTABLE.

BOTTOM PIERCED FOR MOUNTING RC-7758 CASTERS.

LOAD RATING: 1200 LBS. MAX.



* DISCONTINUED

PART No.	P.S.	A	B	C	D	E	F	G	H	J
E30-2000	21.000	30.250	29.000	27.500	18.937	—	—	—	—	—
* E30-2001	31.500	40.750	39.500	38.000	29.437	—	—	—	—	—
* E30-2002	35.000	44.250	43.000	41.500	32.937	—	—	—	—	—
E30-2003	42.000	51.250	50.000	48.500	—	19.281	17.906	—	—	—
E30-2004	52.500	61.750	60.500	59.000	—	24.531	23.156	—	—	—
E30-2005	61.250	70.500	69.250	67.750	—	28.906	27.531	—	—	—
E30-2006	70.000	79.250	78.000	76.500	—	33.281	31.906	—	—	—
E30-2007	78.750	88.000	86.750	85.250	—	—	—	25.125	22.312	23.750