

# SURFBOARDS®



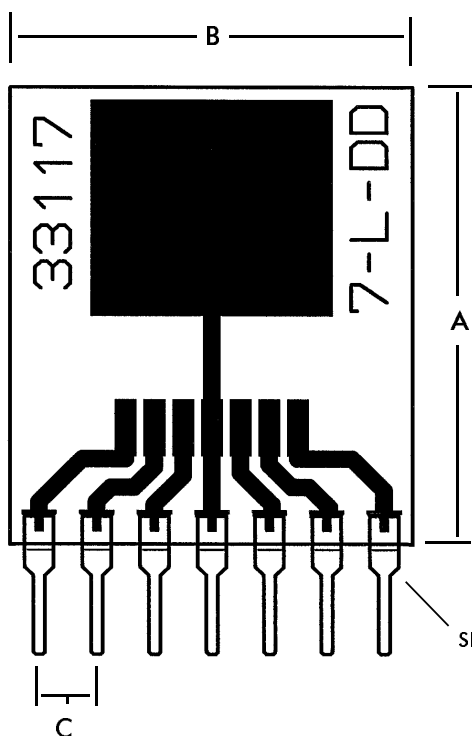
THE BREADBOARDING MEDIUM FOR SURFACE MOUNT™

## APPLICATION SPECIFIC ADAPTERS

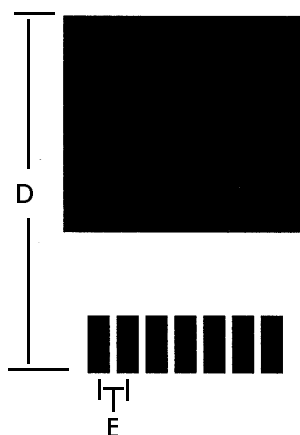
IDS33117 3-9-99

MODEL **33117**

FOR **7- LEAD DD** PACKAGE  
SURFACE MOUNT DEVICE



DEVICE FOOTPRINT



PINS ON .1 in. CENTERS  
PROVIDE COMPATIBILITY  
WITH BREADBOARDS  
AND SOCKETS.

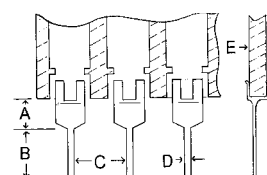
USE FOR PROTOTYPING,  
DEVICE EVALUATION OR  
TEST, SMD TO THROUGH  
HOLE CONVERSION.

NOTE: CIRCUIT FOILS AND  
OUTPUT PINS MAY NOT BE  
SUITABLE FOR OPERATION  
AT HIGHER RATED DEVICE  
CURRENTS. EXTREME  
TEMPERATURE RISE MAY  
CAUSE FAILURE.

SINGLE-IN-LINE (SIP)  
PINS ON .1 in  
CENTERS. SEE PIN  
SPECIFICATIONS

FIG.	INCHES	MM
A	.800	20.32
B	.700	17.78
C	.100	2.54
D	.625	15.87
E	.050	1.27

### PIN SPECIFICATIONS / TOLERANCES



Inches
A = .062 ± .006
B = .130 ± .010
C = .100 ± .005
D = .020 ± .004
E = .031 ± .005

### BOARD SPECIFICATIONS

BOARD MATERIAL: .031 ± .005 in. Thick G-10 FR-4  
Glass Epoxy or equivalent.

CIRCUITS: 1oz Copper with solder coated pads.

TOLERANCES: Given in inches  
Board Size ± .020 / OAL ± .040  
Circuit pattern/position ± .005

Copyright 1997, 1999 by Capital Advanced Technologies, Inc. All rights reserved. Surfboards are a registered trademark of Capital Advanced technologies, Inc. All other trademarks or registered trademarks are property of their respective owners. Availability, specifications, and prices are subject to change without notice. All information given is believed to be accurate but is not guaranteed. The user of information given or products represented by such information is responsible for determining the suitability of said information or products for a given purpose.

**CAPITAL ADVANCED TECHNOLOGIES, INC.**

CAROL STREAM, ILLINOIS. USA.

PHONE 630-690-1696 WWW.CapitalAdvanced.Com FAX-ON-DEMAND 630-690-2865