

SURFBOARDS®



THE BREADBOARDING MEDIUM FOR SURFACE MOUNT™

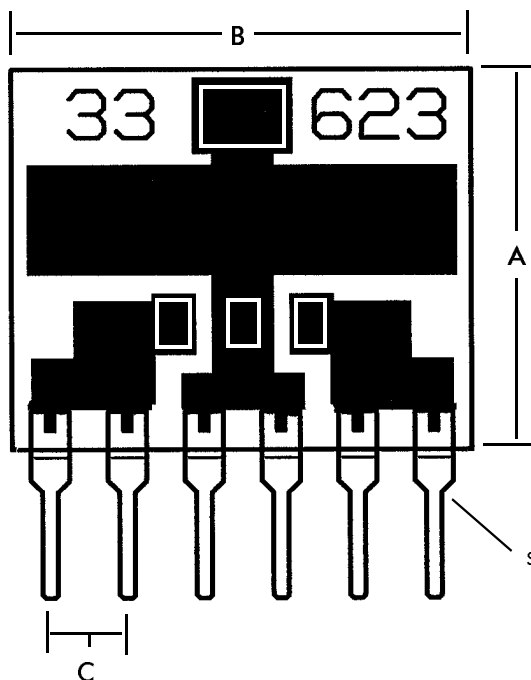
APPLICATION SPECIFIC ADAPTERS

IDS33623 3-9-99

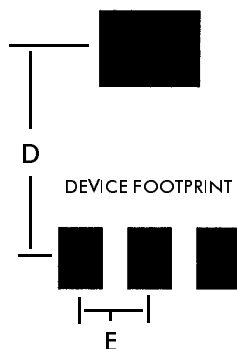
MODEL **33623**

FOR **SOT-223**
HIGHER CURRENT APPLICATIONS

SAME DEVICE FOOTPRINT AS MODEL
33223 EXCEPT WITH 2 OUTPUT PINS PER
DEVICE LEAD FOR HIGHER CURRENT.



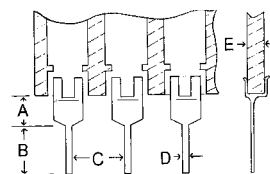
SINGLE-IN-LINE
(SIP) PINS ON
.1 in. CENTERS.
2 PINS PER
DEVICE LEAD.
SEE PIN SPECS.



NOTE: CIRCUIT TRACE
FOILS AND OUTPUT PINS
MAY NOT BE SUITABLE FOR
DEVICE OPERATION AT
HIGHEST RATED CURRENT
LEVELS. EXTREME
TEMPERATURE RISE MAY
RESULT IN FAILURE.

FIG.	INCHES	MM
A	.500	12.70
B	.600	15.24
C	.100	2.54
D	.275	6.98
E	.090	2.28

PIN SPECIFICATIONS / TOLERANCES



In Inches
A = .062 ± .006
B = .130 ± .010
C = .100 ± .005
D = .020 ± .004
E = .031 ± .005

BOARD SPECIFICATIONS

BOARD MATERIAL: .031 ± .005 in. Thick G-10 FR-4
Glass Epoxy or equivalent.

CIRCUITS: 1oz Copper with solder coated pads.

TOLERANCES: Given in inches
Board Size ± .020 / OAL ± .040
Circuit pattern/position ± .005

Copyright 1997, 1999 by Capital Advanced Technologies, Inc. All rights reserved. Surfboards are a registered trademark of Capital Advanced technologies, Inc. All other trademarks or registered trademarks are property of their respective owners. Availability, specifications, and prices are subject to change without notice. All information given is believed to be accurate but is not guaranteed. The user of information given or products represented by such information is responsible for determining the suitability of said information or products for a given purpose.

CAPITAL ADVANCED TECHNOLOGIES, INC.

CAROL STREAM, ILLINOIS, USA.

PHONE 630-690-1696 WWW.CapitalAdvanced.Com FAX-ON-DEMAND 630-690-2865