

# H/I-Series

## Toggle Switches

General purpose workhorses with options tailored to meet most any need. Ratings to 17A 125VAC, various actuator, bushing, termination, and circuit choices allow this toggle to easily integrate into a variety of different applications. The H/I-Series has a storied history in the Food service, Generator, Industrial Control, and Office Automation markets and is appropriate for usage in low voltage DC applications as well.



**Carling Technologies®**

Innovative Designs. Powerful Solutions.

INNOVATIVE DESIGNS. POWERFUL SOLUTIONS.

Carling Technologies, Inc.  
60 Johnson Avenue • Plainville, CT 06062-1177  
Phone: (860) 793-9281 • Fax: (860) 793-9231  
Email: [sales@carlingtech.com](mailto:sales@carlingtech.com) • [www.carlingtech.com](http://www.carlingtech.com)

### Dielectric Strength

UL/CSA: 1000V - live to dead metal parts

### Electrical Life

50,000 cycles - maintained  
25,000 cycles - momentary

### Mechanical Life

100,000 cycles

### Operating Temperature

32°F to 185°F (0° to 85°C)

# HK251 - 73

<sup>1</sup>  
Base Part Number

<sup>2</sup>  
Actuator Style

**1 BASE PART NUMBER: SERIES/CIRCUITRY/RATING/TERMINATION<sup>2</sup>**  
**10A 250VAC, 15A 125VAC, 3/4 HP 125-250VAC, 1, 2 or 3 phase**

| Three Pole |          |             |            | Four Pole     |          |             |            |       |
|------------|----------|-------------|------------|---------------|----------|-------------|------------|-------|
| solder lug | .250 tab | screw term. | wire leads | solder lug    | .250 tab | screw term. | wire leads |       |
| HK250      | HK251    | HK254       | HK255      | Off-None-On   | IK250    | IK251       | IK254      | IK255 |
| HK25A      | HK25B    | HK25E       | HK25F      | Off-None-(On) | IK25A    | IK25B       | IK25E      | IK25F |
| HK25L      | HK25M    | HK25S       | HK25S      | On-None-(Off) | IK25L    | IK25M       | IK25S      | IK25T |
| HL250      | HL251    | HL254       | HL25E      | On-None-On    | IL250    | IL251       | IL254      | IL255 |
| HL25A      | HL25B    | HL25E       | HL25F      | On-None-(On)  | IL25A    | IL25B       | IL25E      | IL25F |
| HM250      | HM251    | HM254       | HM255      | On-Off-On     | IM250    | IM251       | IM254      | IM255 |
| HM25A      | HM25B    | HM25E       | HM25F      | On-Off-(On)   | IM25A    | IM25B       | IM25E      | IM25F |
| HM25L      | HM25M    | HM25S       | HM25T      | (On-Off-(On)) | IM25L    | IM25M       | IM25S      | IM25T |

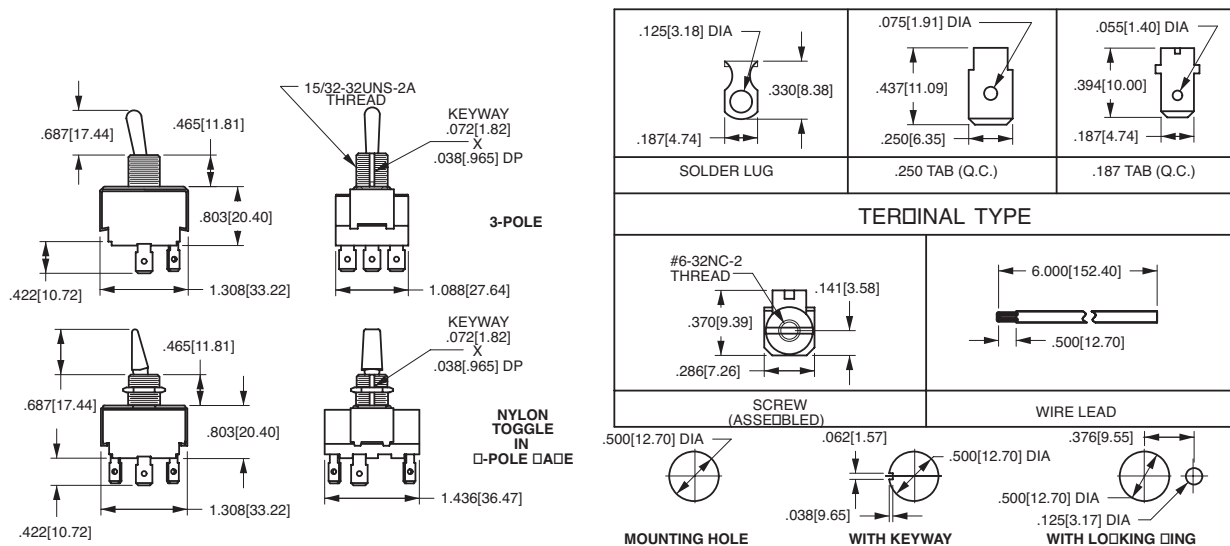
Additional ratings up to 20A 125VAC, 12A 250VAC, 1HP 120-240 VAC available. Consult factory for specifics.

**2 ACTUATOR STYLE<sup>1</sup>**

| BAT                 | unsealed | sealed | toggle length | bushing length |
|---------------------|----------|--------|---------------|----------------|
|                     | 73       | 78     | 0.687         | 0.465          |
|                     | E3       | E8     | 2.000         | 0.465          |
| PADDLE <sup>3</sup> | NBL3     | NBL8   | 0.687         | 0.465          |

**Notes:**

- 1 Additional actuator options available. Consult factory for details.
- 2 Consult factory for .187 tab and combination screw/tab/solder lug termination callouts.
- 3 Nylon toggle with black ebanol plated bushing.
- ( ) Indicates momentary function.



\*Manufacturer reserves the right to change product specification without prior notice.