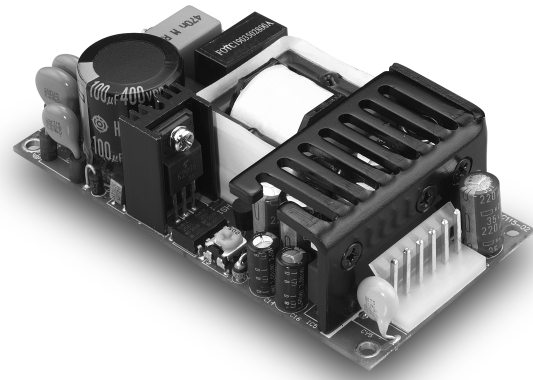


S E R I E S

CFM40D/T

40W DUAL/TRIPLE OUTPUT AC/DC OPEN FRAME



Features

- Universal Input : 90 ~ 264Vac
- 2" x 4" Footprint
- Industry-Standard Pin Out
- Efficiency at 75% Typical (70% for CFM40T-07)
- Meets UL/cUL,TUV,CE
- Conductive EMI Meets CISPR/FCC Class B

Specifications

INPUT CHARACTERISTICS:

Voltage90-264Vac
Frequency.....47 to 63Hz
Inrush Current..... 50A max. @264Vac
Input Current 1A max. (RMS) @ 115Vac
Conducted EMI.....CISPR/FCC Class B
Isolation.....Input to Output=4,242Vdc
Leakage Current.....3.5mA max.

ENVIRONMENTAL CHARACTERISTICS:

Operating Temperature0°C ~ 45°C
Storage Temperature -20°C ~85°C

OUTPUT CHARACTERISTICS:

Rated Power for Convection Cooling.....40W (CFM40T-07, 30W)
Maximum Power with 30 CFM Forced Air.....50W (CFM40T-07, 40W)
Hold-up Time.....20mS typ. @115Vac
Short Circuit/ Over Load Protection.....On All Outputs (Auto Recovery)
Over Voltage Protection.....3.6~4.6V/5.7~6.7V ON V1(3.3V/5V)
120%~140% ON V2(12V/15V/24V)

MECHANICAL OUTLINE:

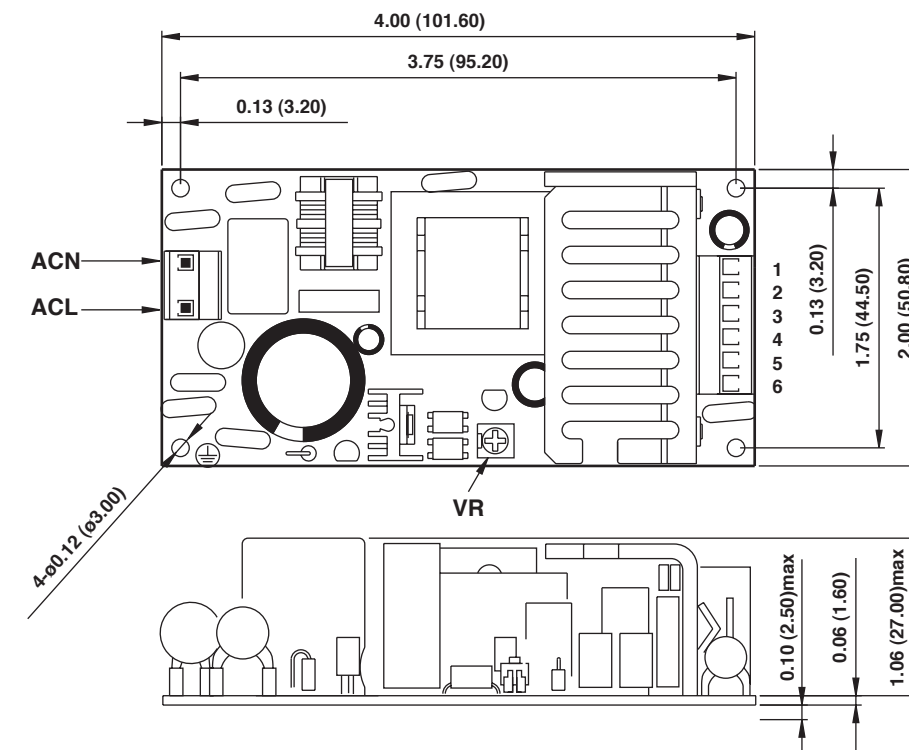
Dimensions4.00x2.00x1.06Inches (101.6 x 50.8 x 27.0 mm)
Weight180g

MODEL	Output Voltage	Output Current (A)			Ripple (mVp-p)	Voltage Accuracy	Line Reg.	Load Reg.	O/P Power Max.	EFF. (Typ.)
		Min.	Rated	Max.						
CFM40D-01	5V(V1)	0.4	3.2	5.0	50	±3%	±1%	±3%	40.0W	77%
	12V(V2)	0.2	2.0	2.5	120	±4%	±2%	±5%		
CFM40D-02	5V(V1)	0.4	3.2	5.0	50	±3%	±1%	±3%	40.0W	78%
	24V(V2)	0.2	1.0	1.5	240	±4%	±2%	±5%		
CFM40T-01	5V(V1)	0.4	3.0	5.0	50	±3%	±1%	±3%	40.5W	75%
	12V(V2)	0.2	2.0	2.5	120	±4%	±2%	±5%		
	-5V(V3)	0	0.3	0.5	50	±3%	±1%	±1%		
CFM40T-02	5V(V1)	0.4	3.0	5.0	50	±3%	±1%	±3%	42.6W	75%
	12V(V2)	0.2	2.0	2.5	120	±4%	±2%	±5%		
	-12V(V3)	0	0.3	0.5	120	±3%	±1%	±1%		
CFM40T-03	5V(V1)	0.4	3.0	5.0	50	±3%	±1%	±3%	42.0W	75%
	15V(V2)	0.2	1.5	2.3	150	±4%	±2%	±5%		
CFM40T-04	5V(V1)	0.4	3.0	5.0	50	±3%	±1%	±3%	42.6W	75%
	24V(V2)	0.2	1.0	1.5	240	±4%	±2%	±5%		
CFM40T-05	5V(V1)	0.4	3.0	5.0	50	±3%	±1%	±3%	40.5W	75%
	24V(V2)	0.2	1.0	1.5	240	±4%	±2%	±5%		
	-5V(V3)	0	0.3	0.5	50	±3%	±1%	±1%		
CFM40T-06	5V(V1)	0.4	3.0	5.0	50	±3%	±1%	±3%	42.6W	75%
	24V(V2)	0.2	1.0	1.5	240	±4%	±2%	±5%		
	12V(V3)	0	0.3	0.5	120	±3%	±1%	±1%		
CFM40T-07	3.3V(V1)	0.4	5.0	7.0	100	±3%	±1%	±3%	30.0W	70%
	5V(V2)	0.2	2.0	3.5	100	±4%	±3%	±5%		
	-12V(V3)	0	0.3	0.5	120	±3%	±1%	±1%		

NOTE:

1. Voltage accuracy is set at full load.
2. Add a 0.1μF ceramic capacitor and a 10μF E.L. capacitor to output for Ripple & Noise measuring @20MHz BW.
3. Line regulation is measured from 100Vac to 240Vac with full load.
4. Load regulation is measured from 60% to 100% full load and from 60% to 20% full load (60% ± 40% full load)

All Dimensions are In Inches(mm)
Tolerances: .xx±.02(.xx±.5) unless otherwise noted



PIN CONNECTION

Pin	CFM40D/T
1.	V2
2.	V1
3.	V1
4.	COM
5.	COM
6.	V3