

DM Series

Miniature 2 Pole Power Rocker Switches



Features/Benefits

- **3 AMPS to 10 AMPS**
- **Quick connect terminals**
- **Double pole in miniature size**
- **Recessed bracket available—prevents accidental actuation**
- **RoHS compliant**

Typical Applications

- **Computers**
- **Appliances**
- **Electric tools**



Specifications

CONTACT RATING: DM2X Models: 3 AMPS @ 125 V AC; 2 AMPS @ 250 V AC (UL/CSA). DM6X Models: 10 AMPS @ 125 V AC; 5 AMPS @ 250 V AC (UL/CSA). 6 AMPS @ 125 V AC, 3 AMPS @ 250 V AC, T85 (VDE).

ELECTRICAL LIFE: 10,000 make-and-break cycles at full load.

INSULATION RESISTANCE: $10^9 \Omega \text{ min.}$

DIELECTRIC STRENGTH: 1,000 Vrms min. @ sea level.

OPERATING TEMPERATURE: -20°C to +85°C

Materials

HOUSING & ACTUATOR: 6/6 nylon (UL94V-2), black.

MOVABLE CONTACTS: DM2X Models: Copper, silver plated.
DM6X Models: Coin silver, silver plated.

STATIONARY CONTACTS & TERMINALS: Copper or brass, silver plated.

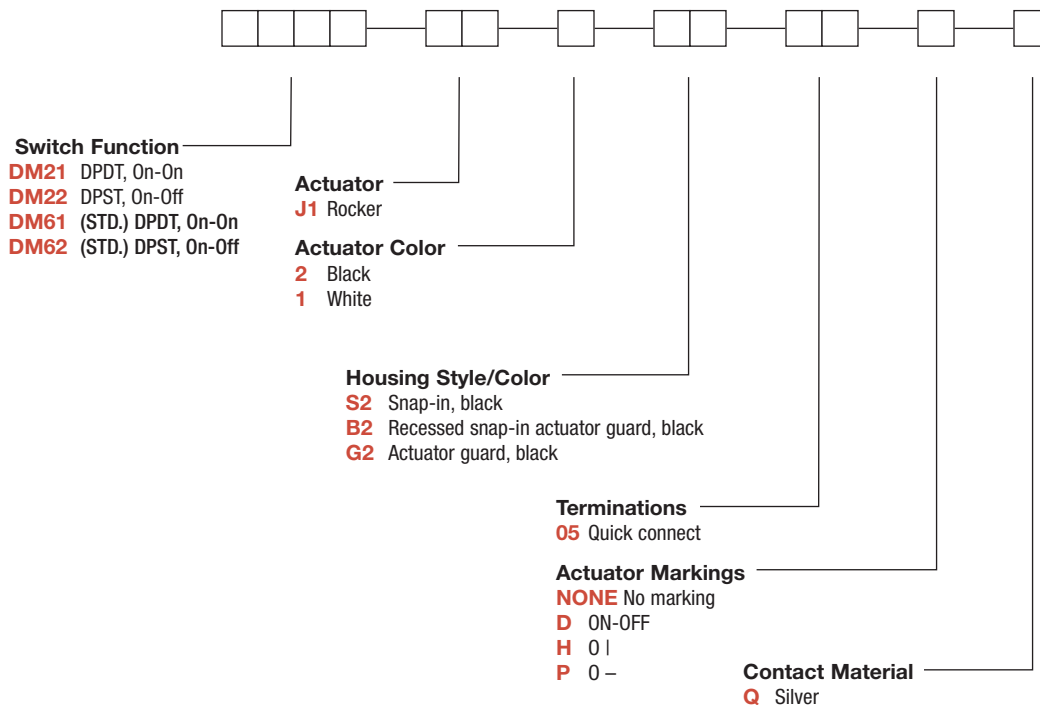
CONTACT SPRING: Music wire or stainless steel.

NOTE: Any models supplied with Q contact material are RoHS compliant.

NOTE: Specifications and materials listed above are for standard switches.
For information on specific and custom switches, consult Customer Service Center.

Build-A-Switch

To order, simply select desired option from each category and place in the appropriate box. Available options are shown and described on pages G-71 and G-73. For additional options not shown in catalog, consult Customer Service Center.



Rocker



G



Dimensions are shown: Inches (mm)
Specifications and dimensions subject to change

DM Series Miniature 2 Pole Power Rocker Switches

SWITCH FUNCTION



NO. POLES	MODEL NO.	AMP RATING*	SWITCH FUNCTION		CONNECTED TERMINALS		SCHEMATIC
			POS. 1	POS. 2	POS. 1	POS. 2	
DP	DM22	3	ON	OFF	1-1A, 2-2A	OPEN	 DPST
	DM62	10					
	DM21	3	ON	ON	1-1A, 2-2A	1-1B, 2-2B	 DPDT
	DM61	10					

DPDT

Actuator shown in pos. 1 - 'ON' position.

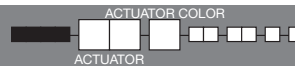
Part number shown: DM61J12S205Q

TERMINAL NUMBERS FOR REFERENCE ONLY

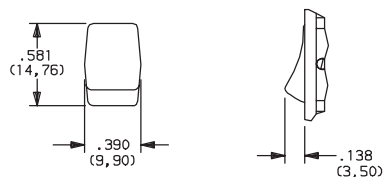
* RATINGS: See page G-72 for complete ratings.

All models with all options. DM6X models also .

ACTUATOR



J1 ROCKER



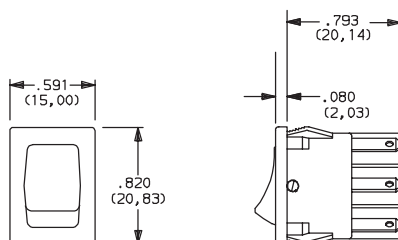
OPTION CODE	ACTUATOR COLOR
2	BLACK
1	WHITE

NOTE: Actuator finish: matte. Other colors available, consult Customer Service Center.

HOUSING STYLE/COLOR

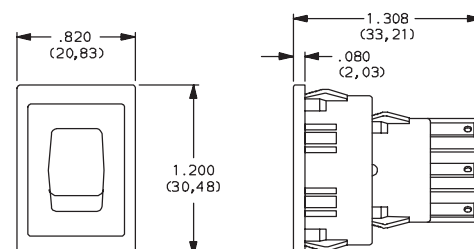


S2 SNAP-IN, BLACK



NOTE: Housing finish: matte. Other colors available, consult Customer Service Center.

B2 RECESSED SNAP-IN ACTUATOR GUARD, BLACK



Dimensions are shown: Inches (mm)
Specifications and dimensions subject to change



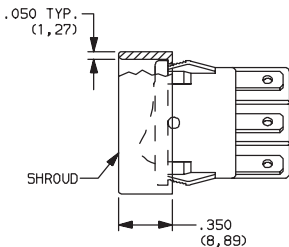
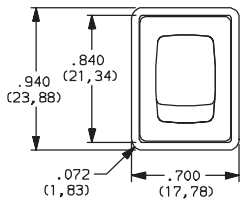
DM Series

Miniature 2 Pole Power Rocker Switches

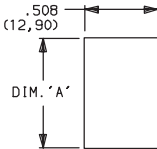
HOUSING STYLE/COLOR

G2 ACTUATOR GUARD, BLACK

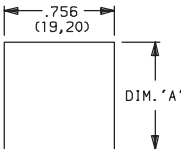
NEW!



PANEL MOUNTING



'S2' & 'G2' housing styles



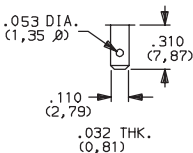
'B2' housing style

NOTE: Blank insert available for SP models only, see page H-76.

PANEL THICKNESS	DIM 'A' 'S2' & 'G2' HOUSING STYLES	DIM 'A' 'G2' OPTION SP MODELS ONLY	DIM 'A' 'B2' HOUSING STYLES
.030-.049 (0,76) (1,24)	.756 (19,20)	0.764 (19,41)	1.068 (27,13)
.049-.079 (1,24) (2,01)	.764 (19,41)	0.780 (19,81)	1.076 (27,33)
.079-.118 (2,01) (3,00)	.780 (19,81)	n/a	1.092 (27,74)

TERMINATIONS

05 QUICK CONNECT



ACTUATOR MARKINGS

NONE NO MARKING



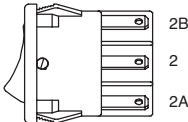
D ON-OFF



H O I



P O -



NOTE: Orientation of actuator markings and terminals.

'D' & 'P' marking options: marking color white, standard for all actuator colors except white actuators. Black marking color standard for white actuators. Consult Customer Service Center for other available marking colors.

CONTACT MATERIAL

OPTION CODE	CONTACT AND TERMINAL MATERIAL	RATINGS	
Q	SILVER 1,2	POWER	DM2X Models: 3 AMPS @ 125 V AC; 2 AMPS @ 250 V AC (UL/CSA). DM6X Models: 10 AMPS @ 125 V AC; 5 AMPS @ 250 V AC (UL/CSA). 6 AMPS @ 125 V AC; 3 AMPS @ 250 V AC, T85 (VDE).

* Note: See Technical Data section of this catalog for RoHS compliant and compatible definitions and specifications.

¹ MOVABLE CONTACT: DM2X Models: Copper, silver plated.
DM6X Models: Coin silver, silver plated.

² STATIONARY CONTACTS & TERMINALS: Copper or brass, silver plated.

NOTE: Any models supplied with Q contact material are RoHS compliant.

All models with all options. DM6X models also



Third Angle
Projection

Dimensions are shown: Inches (mm)

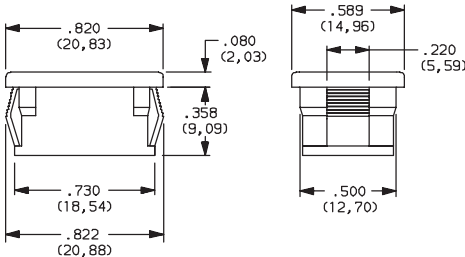
Specifications and dimensions subject to change

www.ck-components.com

DM Series Miniature 2 Pole Power Rocker Switches

AVAILABLE HARDWARE

Insert



PART NO.
057190200

Material: Nylon 6/6
Finish: Matte

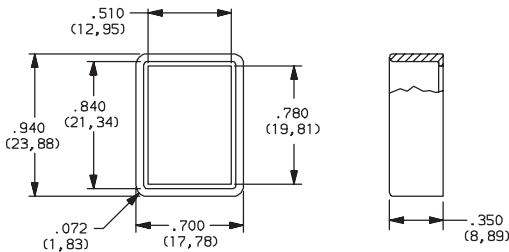
Recessed Actuator Guard



PART NO.
599D02000

Material: 6/6 Nylon
Finish: Matte

Actuator Guard



PART NO.
104C22000

Material: PBT thermoplastic
Finish: Matte

PART NO.
216C00000 IP65 SPLASH PROOF RUBBER BOOT

