

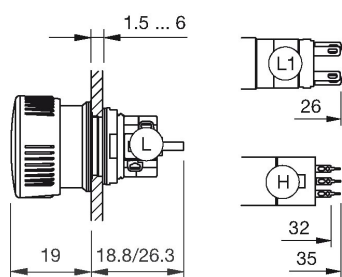
## 51-259.025 - Stop switch complete

### 51-259.025 - Stop switch complete



*Attention: The preview is based on a sample product. This can differ from your current configuration.*

#### Dimensions



#### Mounting cut-outs

#### Mounting

Mounting cut-out	Ø 16 mm
Mounting style	raised mounting

#### Front

Front dimension	Ø 24.5 mm
Front shape	round

#### Other Attributes

Weight	0.11 kg
--------	---------

#### Operating-/Indication part

Lens material	Plastic
Lens colour	red
Lens shape	Mushroom
Lens optics	opaque

#### IP-Rating

Front protection	IP 65
------------------	-------

#### Connection Method

Terminal	Solder
----------	--------

#### Actuator

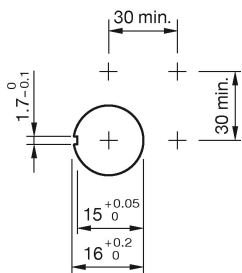
Switching action	Ma
------------------	----

#### Switching element

Switching system	Snap-action
Contacts	2 NC + 2 NO
Switching voltage	250 V AC/DC
Switching current	5 A
Contact material	gold-plated silver

#### Function

Stop switch
-------------



Wiring diagram

