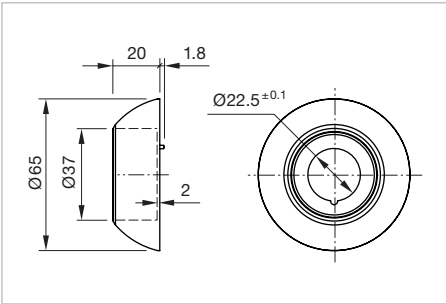



E-stop protective shroud, IP 67

Additional Information

- Front panel thickness 1 .... 2.5 mm other actuators
- Front panel thickness 1 .... 5 mm Emergency-stop switch
- With anti-twist device
- When using a protective shroud the e-stop or stop switch has to be turned by 180° to be mounted. See dimensional drawing
- Do not use solvents when cleaning



Dimensions mm]

Dimension	Marking	Colour	Protection degree	Part No.	Weight
 <b>E-stop protective shroud</b>					
Ø 65 mm		yellow	IK 07	<b>704.927.6</b>	0.017 kg
	NOT-AUS	yellow	IK 07	<b>704.927.6A</b>	0.017 kg
	EMERGENCY-STOP	yellow	IK 07	<b>704.927.6B</b>	0.017 kg
	EMERGENCY-STOP / NOT-AUS	yellow	IK 07	<b>704.927.6C</b>	0.017 kg