

# EAO – Your Expert Partner for Human Machine Interfaces

## 84-902B - E-stop protective shroud

### 84-902B - E-stop protective shroud



*Attention: The preview is based on a sample product. This can differ from your current configuration.*

#### Mounting

Mounting cut-out  
Design

Ø 22,3 mm  
raised

#### Other Attributes

Marking

EMERGENCY STOP

Weight

0,006 kg

Dimension

Ø 50 mm

Material

Plastic

Colour

yellow

#### IP-Rating

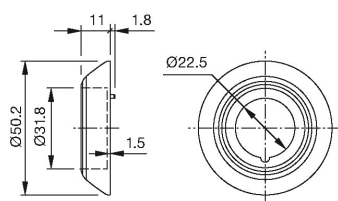
Front protection

IP65

# EAO – Your Expert Partner for Human Machine Interfaces

## 84-902B - E-stop protective shroud

### Dimensions



### Additional information

Front panel thickness 1 ... 3 mm

With anti-twist device

When using a protective shroud the e-stop or stop switch has to be turned by 180° to be mounted. See dimensional drawing