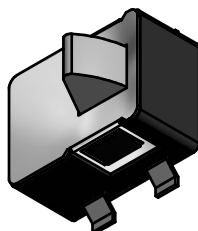
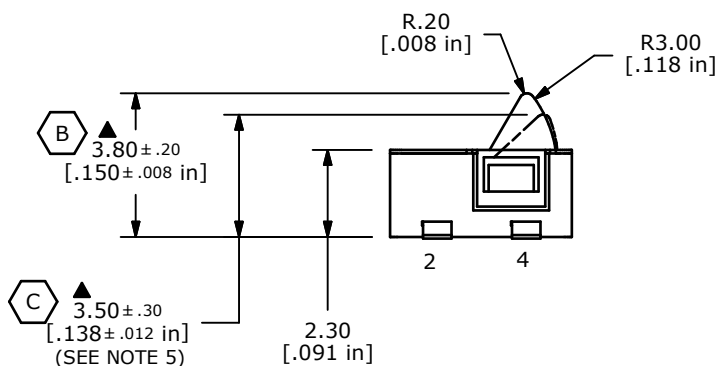
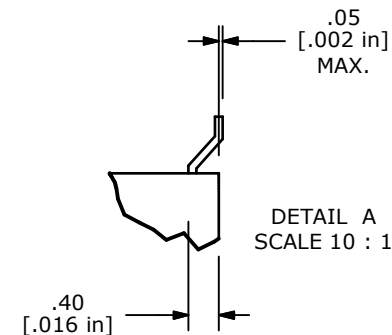
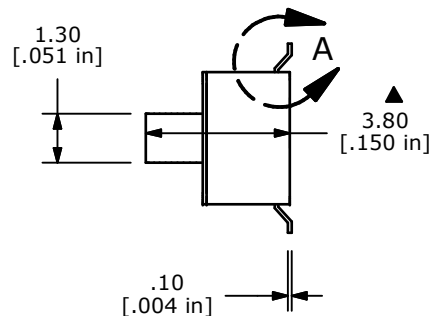
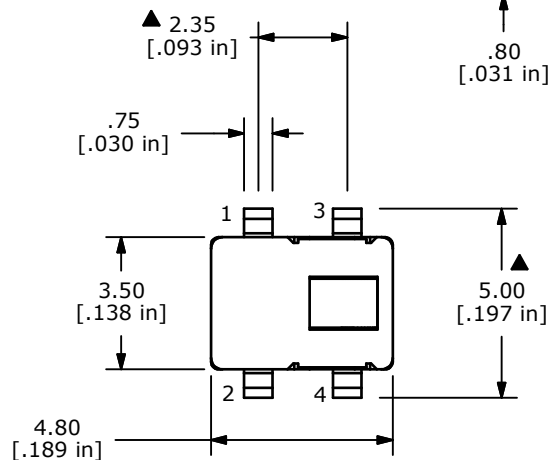


ISOMETRIC



NOTES:

1. ALL DIMENSIONS IN MM
2. GENERAL TOLERANCE: X.X=±0.4
X.XX=±0.25
3. TERM. NOS. FOR REFERENCE ONLY.
- ▲4. RATING: 1mA @ 5VDC
- ▲5. OPERATING POSITION = 3.50 ± 0.30
- ▲6. OPERATING FORCE: <50 gf
7. CONTACT RESISTANCE: 100 MILLI OHMS MAX. (INITIAL)
8. MECHANICAL / ELECTRICAL LIFE: 30,000 min.
9. INSULATION RESISTANCE: 100 MEGA OHMS min.
10. OPERATING TEMPERATURE: -25° C TO 70° C
11. DIELECTRIC STRENGTH: 100 VAC FOR 1 MINUTE.
12. PACKAGE: POLYBAG/250 PIECES PER
13. ▲ DENOTES CRITICAL PARAMETER
14. 2002/95/EC (ROHS) COMPLIANT

C	21197	3.50±.30 WAS 2.90±.30	8/7/13	EBP
B	21173	3.80±.20 WAS 3.70±.10	7/10/13	EBP
A	18242	RELEASE FOR PRODUCTION	9/11/08	BLR
REV	PCR NO	DESCRIPTION	DATE	BY



TITLE TD1146

SCALE	DATE	DR	DWG	REV
5:1	9/11/2008	BLR	Q940000	C

THE INFORMATION CONTAINED IN THIS DOCUMENT IS PROPRIETARY TO E-SWITCH AND IS NOT TO BE COPIED OR TRANSFERRED