

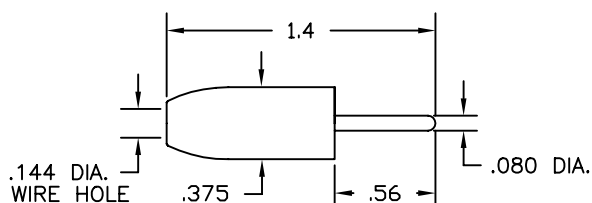
# TEST LEAD INTERFACE COMPONENTS

## BASIC INFORMATION

**Colors:** Black, Brown, Red, Orange, Yellow, Green, Blue, Violet, Gray and White, unless otherwise specified in individual boxes.

These components are the same as used on all Test Lead Assemblies, pages 6-11, 21, 22 and 31-103.

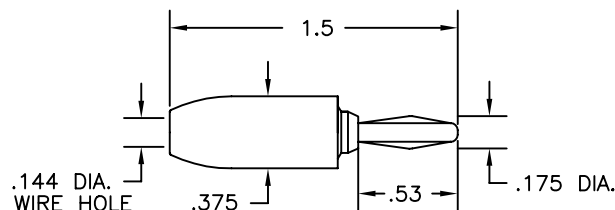
## STANDARD .080" (2.03mm) PIN



Part No.	Description
<b>9201</b>	Standard .080" (2.03mm) Pin
<b>9201-S</b>	Assortment of 1 each of 10 Colors

Nylon Handle, Nickel-Plated Brass Body. Solderless Assembly.  
Colors: 10, Specify. See listing in Basic Information.

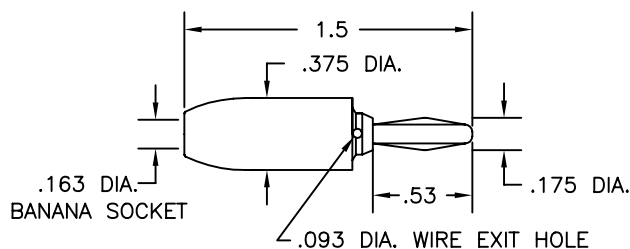
## STANDARD BANANA PLUG



Part No.	Description
<b>9202</b>	Standard Banana Plug
<b>9202-S</b>	Assortment of 1 each of 10 Colors

Nylon Handle, Nickel-Plated Brass Body. Nickel Silver Springs.  
Solderless Assembly.  
Colors: 10, Specify. See listing in Basic Information.

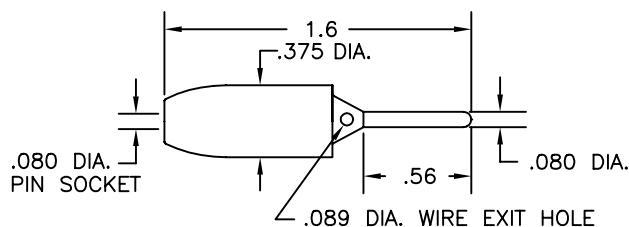
## STACKING BANANA PLUG



Part No.	Description
<b>9203</b>	Stacking Banana Plug
<b>9203-S</b>	Assortment of 1 each of 10 Colors

Nylon Handle, Nickel-Plated Brass Body. Nickel Silver Springs.  
Solderless Assembly.  
Colors: 10, Specify. See listing in Basic Information.

## STACKING .080" (2.03mm) PIN



Part No.	Description
<b>9204</b>	Stacking .080" (2.03mm) Pin
<b>9204-S</b>	Assortment of 1 each of 10 Colors

Nylon Handle, Nickel-Plated Brass Body. Solderless Assembly.  
Colors: 10, Specify. See listing in Basic Information.

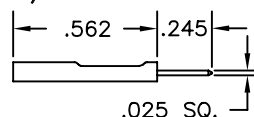
## .025" (.635mm) SQUARE SOCKET



Part No.	Description
<b>9205</b>	.025" Square Socket
<b>9205-HS</b>	Square Socket with .75" (19mm) Heat Shrink Sleeve

Brass Body. Gold-Plated Beryllium Copper Spring. Crimp Assembly.

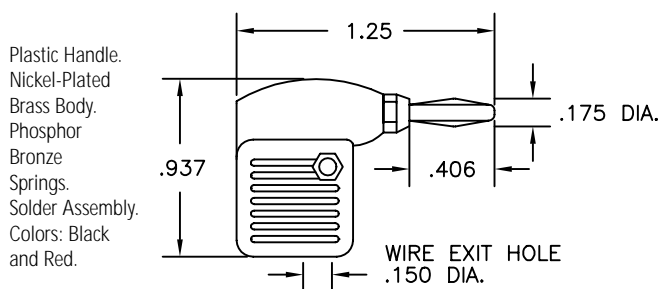
## .025" (.635mm) SQUARE PIN



Part No.	Description
<b>9265</b>	.025" (.635mm) Square Pin
<b>9265-HS</b>	Square Pin with .75" (19mm) Heat Shrink Sleeve

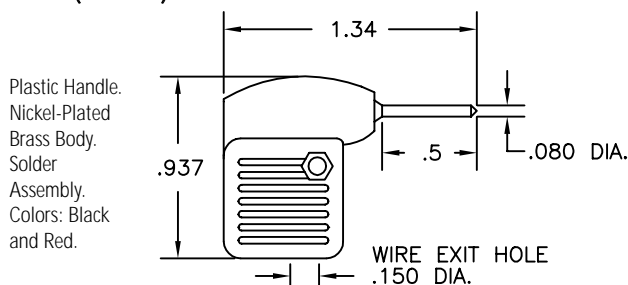
Gold-Plated Brass Body. Crimp Assembly.

## METER BANANA PLUG



Part No.	Description
<b>9206</b>	Meter Banana Plug

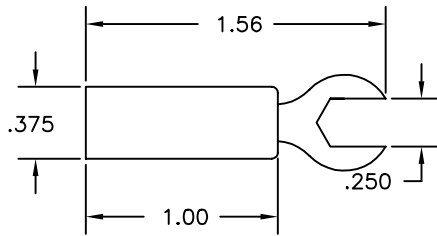
## .080" (2.03mm) METER PIN



Part No.	Description
<b>9207</b>	Meter Pin Plug

# TEST LEAD INTERFACE COMPONENTS

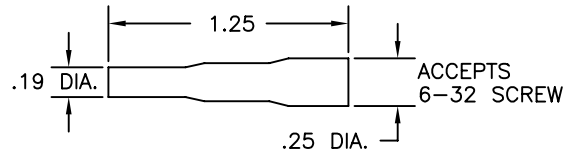
## .250" (6.35mm) INSULATED SPADE LUG



Part No.	Description
<b>9208</b>	.250" Spade Lug

Plastic Handle. .050" (1.27mm) Thick Nickel Plated Brass Lug.  
Solder Assembly. Colors: Red, Black. Specify.

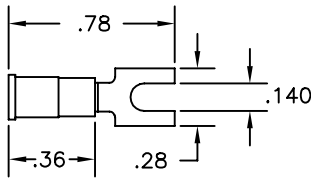
## FEMALE 6-32 THREAD



Part No.	Description
<b>9212</b>	Female 6-32 Thread

Silicone Rubber Insulator. Cadmium-Plated Steel Spring Thread.  
Solder Assembly. Colors: Red, Black. Specify.

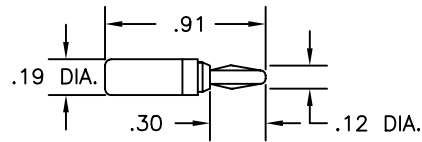
## .140" (3.57mm) INSULATED SPADE LUG



Part No.	Description
<b>9209</b>	.140 Spade Lug for AWG22 to 18 Lead Insulation Maximum: .150" (3.81mm) For No. 6 Screw—.140" (3.55mm)

Vinyl Insulator. Tin Plated Copper Lug. Crimp on Assembly.  
Color: Red Only.

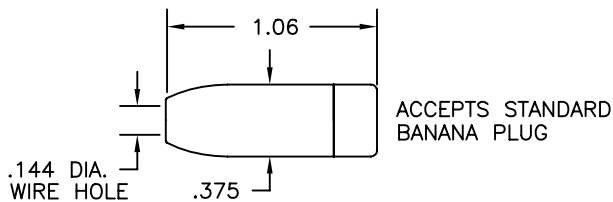
## MINIATURE BANANA PLUG



Part No.	Description
<b>9213</b>	Miniature Banana Plug
<b>9213-S</b>	Assortment of 1 each of 10 Colors

Plastic Handle. Nickel-Plated Brass Body. Nickel-Plated Beryllium Copper Springs.  
Solder Assembly. Colors: 10, Specify. See listing in Basic Information.

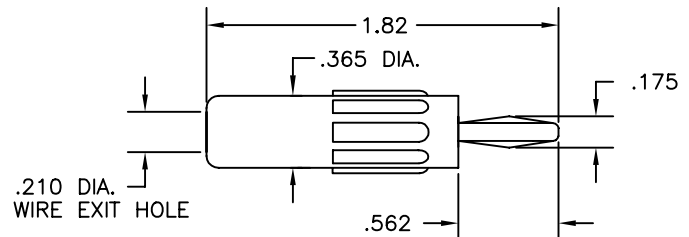
## STANDARD BANANA JACK



Part No.	Description
<b>9210</b>	Standard Banana Jack
<b>9210-S</b>	Assortment of 1 each of 10 Colors

Nylon Handle. Nickel-Plated Brass Socket. Solder Assembly.  
Colors: 10, Specify. See listing in Basic Information.

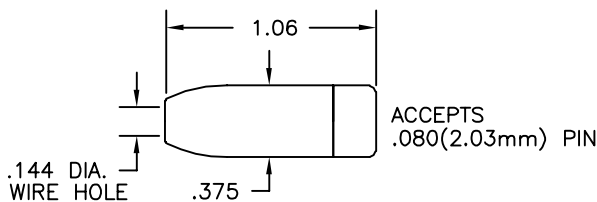
## BANANA PLUG FOR HEAVY WIRE



Part No.	Description
<b>9214</b>	Banana Plug for Heavy Wire

Plastic Handle. Nickel-Plated Brass Body. Nickel Silver Springs.  
Solderless Assembly. Colors: Red, Black. Specify.

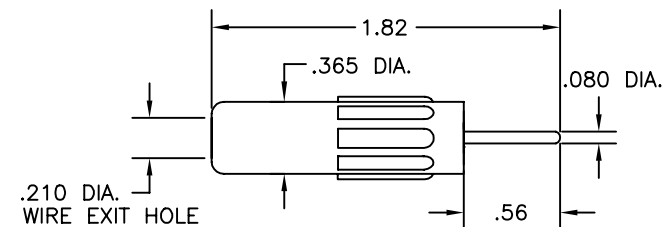
## STANDARD .080" (2.03mm) TIP JACK



Part No.	Description
<b>9211</b>	Standard .080" (2.03mm) Tip Jack
<b>9211-S</b>	Assortment of 1 each of 10 Colors

Nylon Handle. Silver-Plated Beryllium Copper Contact Spring.  
Solder Assembly. Colors: 10, Specify. See listing in Basic Information.

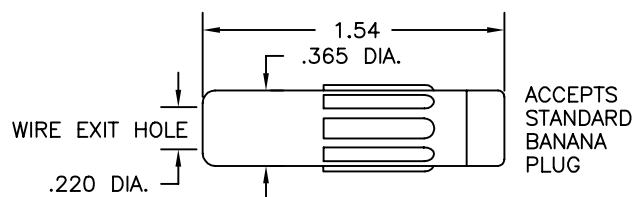
## .080" (2.03mm) PIN FOR HEAVY WIRE



Part No.	Description
<b>9250</b>	.080" (2.03mm) Pin for Heavy Wire

Plastic Handle. Nickel-Plated Brass Body. Solderless  
Assembly. Colors: Black, Red. Specify.

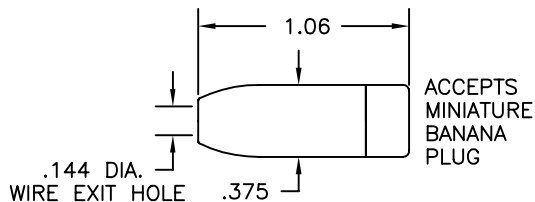
## STANDARD BANANA JACK WITH LONG BODY AND LARGE WIRE EXIT HOLE TO ACCOMMODATE HEAVY WIRE



Part No.	Description
<b>9251</b>	Standard Banana Jack with Long Body

Plastic Handle. Nickel-Plated Brass Socket. Solder Assembly. Colors: Black, Red & White. Specify.

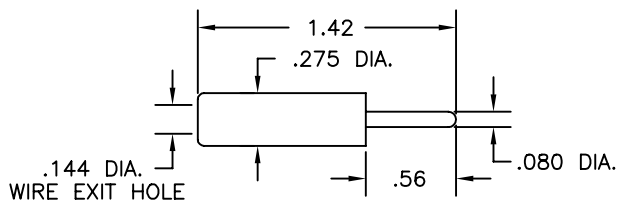
## MINIATURE BANANA JACK



Part No.	Description
<b>9252</b>	Miniature Banana Jack
<b>9252-S</b>	Assortment of 1 each of 10 Colors

Nylon Handle. Nickel-Plated Brass Socket. Solder Assembly. Colors: 10, Specify. See listing in Basic Information.

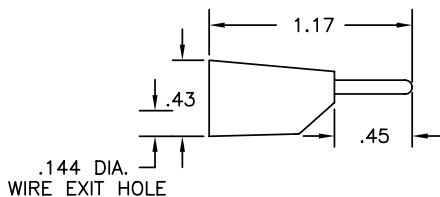
## SLIMLINE .080" (2.03mm) PIN WITH .275" (7mm) DIAMETER BODY



Part No.	Description
<b>9258</b>	Slimline (.275"/7mm O.D.) .080" (2.03mm) Pin

Delrin Handle. Nickel-Plated Brass Body. Solderless Assembly. Colors: Black, Red & White. Specify.

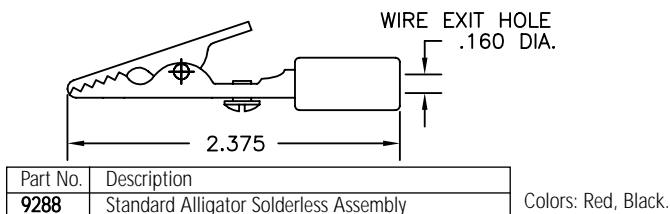
## .080" (2.03mm) STACKING PIN FOR HEAVY WIRE



Part No.	Description
<b>9259</b>	Slimline (.31"/7.8mm O.D.) Stacking .080" Pin
<b>9259-S</b>	Assortment of 1 each of 10 Colors

Plastic Handle. Nickel-Plated Brass Body. Beryllium Copper Internal Jack Spring. Snap Together Solderless Assembly. Colors: 10, Specify. See listing in Basic Information.

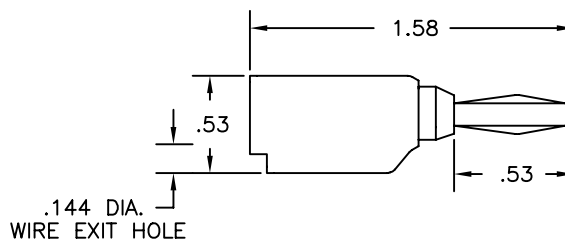
## STANDARD ALLIGATOR SOLDERLESS ASSEMBLY WITH INSULATION SLEEVE



Part No.	Description
<b>9288</b>	Standard Alligator Solderless Assembly

Colors: Red, Black.

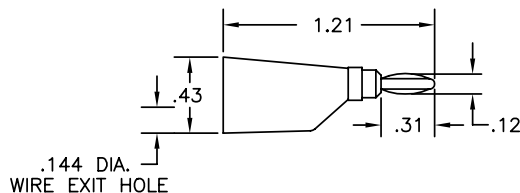
## STACKING BANANA PLUG FOR HEAVY WIRE



Part No.	Description
<b>9260</b>	Stacking Banana Plug for Heavy Wire
<b>9260-S</b>	Assortment of 1 each of 10 Colors

Plastic Handle. Nickel-Plated Brass Body. Nickel-Silver One-Piece Spring. Snap Together Solderless Assembly. Colors: 10, Specify. See listing in Basic Information.

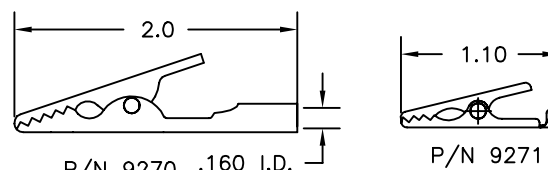
## STACKING MINIATURE BANANA PLUG



Part No.	Description
<b>9261</b>	Stacking Miniature Banana Plug
<b>9261-S</b>	Assortment of 1 each of 10 Colors

Plastic Handle. Nickel-Plated Phosphor Bronze Body. Nickel-Plated Brass Socket. Solderless Assembly. Colors: 10, Specify. See listing in Basic Information.

## STANDARD ALLIGATOR CLIP (UNINSULATED) or MINIATURE ALLIGATOR CLIP (UNINSULATED)

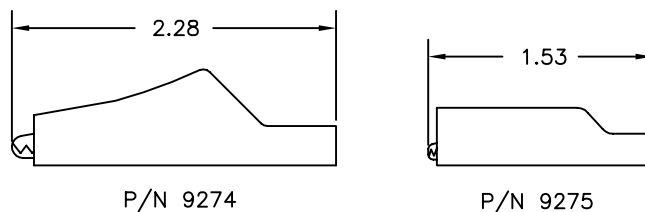


Part No.	Description
<b>9270</b>	Standard Alligator Clip
<b>9271</b>	Miniature Alligator Clip

Cadmium-Plated Steel Conductor. Solder Assembly.

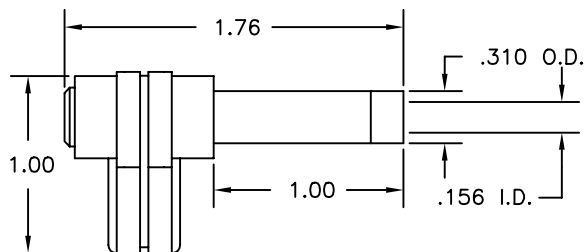
No. **9272** Flexible Vinyl Insulator for Standard Alligator Clip.  
No. **9273** Flexible Vinyl Insulator for Miniature Alligator Clip.  
Colors: 10, Specify. See listing in Basic Information.

## INSULATED STANDARD ALLIGATOR CLIP or INSULATED MINIATURE ALLIGATOR CLIP



Part No.	Description
<b>9274</b>	Standard Alligator Clip with Vinyl Insulator
<b>9274-S</b>	Assortment of 1 each of 10 Colors
<b>9275</b>	Miniature Alligator Clip with Vinyl Insulator
<b>9275-S</b>	Assortment of 1 each of 10 Colors

### SHROUDED RIGHT ANGLE STANDARD BANANA JACK

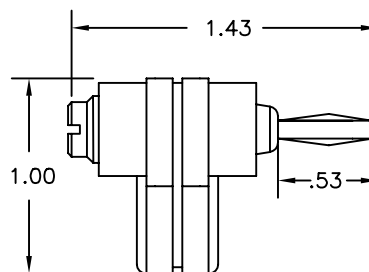


Part No.	Description
9309	Shrouded Right Angle Standard Banana Jack

Fits most **SIMPSON** Instruments with recessed plugs for shrouded receptacles.

**Construction:** Nickel-Plated Beryllium Copper Spring Socket.  
Plastic Handle. Solderless Assembly. Colors: Red, Black.

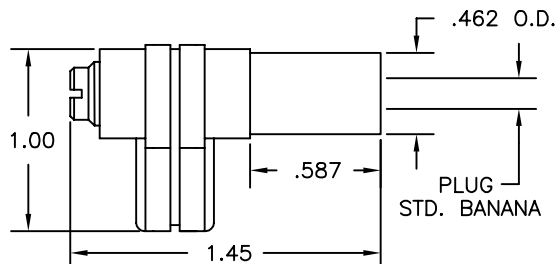
### RIGHT ANGLE STANDARD BANANA PLUG



Part No.	Description
9304	Right Angle Standard Banana Plug

**Construction:** Nickel-Plated Brass Body. Nickel-Silver Springs. Plastic Handle. Solderless Assembly. Colors: Red, Black.

### SHROUDED RIGHT ANGLE STANDARD BANANA PLUG

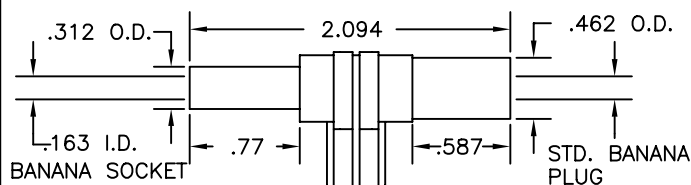


Part No.	Description
9301	Shrouded Right Angle Standard Banana Plug

Fits most **AMPROBE** and **BECKMAN** Instruments with recessed receptacles for shrouded plugs.

**Construction:** Nickel-Plated Brass Body. Nickel-Plated Phosphor Bronze Springs. Plastic Handle. Solderless Assembly. Colors: Red, Black.

### STACKING SHROUDED RIGHT ANGLE STANDARD BANANA PLUG

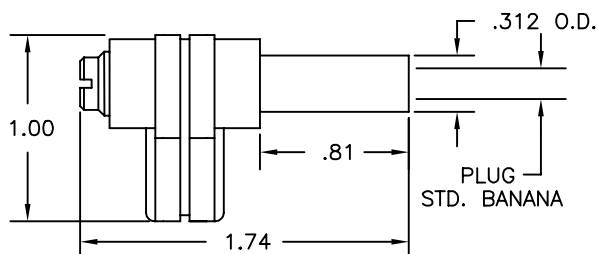


Part No.	Description
9305	Stacking Shrouded Right Angle Standard Banana Plug/Jack

Fits most **AMPROBE BECKMAN, SIMPSON** and **TRIPLETT** Instruments with recessed receptacles for shrouded plugs.

**Construction: Male:** Nickel-Plated Brass Body. Nickel-Plated Phosphor Bronze Springs. **Female:** Nickel-Plated Beryllium Copper Socket. Plastic Handle. Solderless Assembly. Colors: Red, Black.

### SHROUDED RIGHT ANGLE STANDARD BANANA PLUG

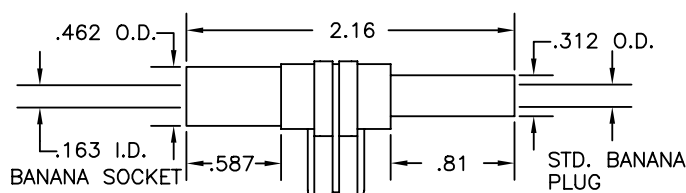


Part No.	Description
9302	Shrouded Right Angle Standard Banana Plug

Fits most **FLUKE** and **B&K PRECISION** Instruments with recessed receptacles for shrouded plugs.

**Construction:** Nickel-Plated Brass Body. Nickel-Plated Phosphor Bronze Springs. Plastic Handle. Solderless Assembly. Colors: Red, Black.

### STACKING SHROUDED RIGHT ANGLE STANDARD BANANA PLUG

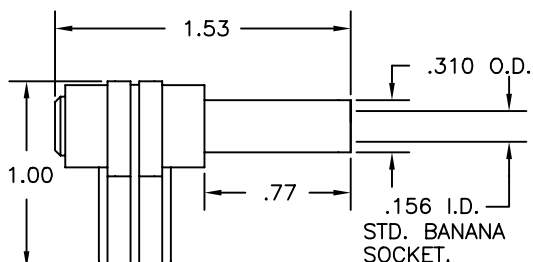


Part No.	Description
9306	Stacking Shrouded Right Angle Standard Banana Plug/Jack

Fits most **FLUKE** and **B&K PRECISION** Instruments with recessed receptacles for shrouded plugs.

**Construction:** Nickel-Plated Brass Body and Socket. Nickel-Plated Phosphor Bronze Springs. Plastic Handle. Solderless Assembly. Colors: Red, Black.

### SHROUDED RIGHT ANGLE STANDARD BANANA JACK

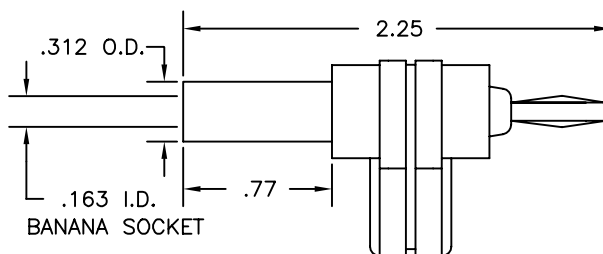


Part No.	Description
9303	Shrouded Right Angle Standard Banana Jack

Fits most **TRIPLETT** Instruments with recessed plugs for shrouded receptacles.

**Construction:** Nickel-Plated Beryllium Copper Spring Socket. Plastic Handle. Solderless Assembly. Colors: Red, Black.

### STACKING RIGHT ANGLE STANDARD BANANA PLUG

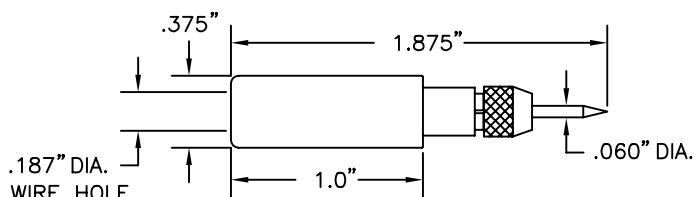


Part No.	Description
9307	Stacking Right Angle Standard Banana Plug

**Construction:** Nickel-Plated Brass Body and Socket. Nickel-Silver Springs. Plastic Handle. Solderless Assembly. Colors: Red, Black.

# TEST LEAD INTERFACE COMPONENTS

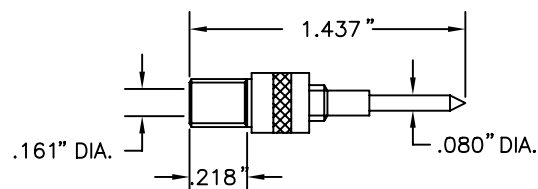
## .060" (1.524mm) NEEDLE TIP PROBE



Part No.	Description
9286	Needle Tip Probe
8208	Replacement Needle

**Construction:** Plastic Handle. 1/4-32 Threaded Assembly. Solder Connection. Nickel Plated Brass Collett. Phono Needle Point. Colors: Red, Black.

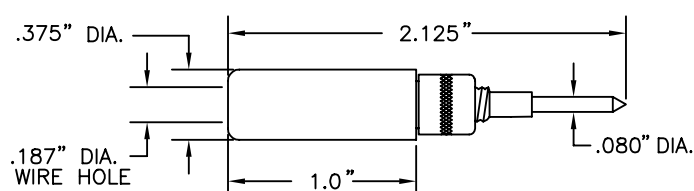
## STANDARD .080" (2.03mm) PIN TIP



Part No.	Description
8203	Replacement Tip for P/N 9287 and No. 33 Probes

**Construction:** Nickel Plated Brass Body and Tip. Solderless Assembly. 1/4-32 Thread. 18AWG Wire Max.

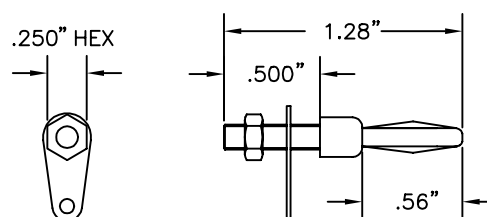
## STANDARD .080" (2.03mm) PIN TIP PROBE



Part No.	Description
9287	Pin Tip Probe; 18 AWG Wire Max

**Construction:** Plastic Handle. 1/4-32 Threaded Assembly. Solderless Connection. Nickel Plated Brass Tip. Colors: Red, Black.

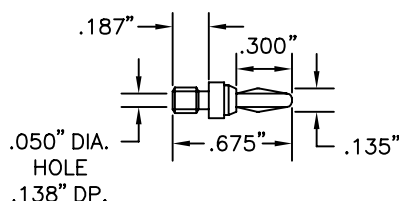
## STANDARD BANANA PLUG 6-32 STUD MOUNTING



Part No.	Description
8204	Standard Banana Plug

**Construction:** Nickel Plated Brass Body and Nut. Tinned Brass Solder Lug. Nickel Plated Beryllium Copper Spring.

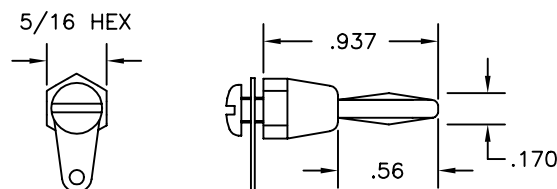
## MINI BANANA PLUG



Part No.	Description
8201	Mini Banana Plug

**Construction:** Nickel-Plated Brass Body. Nickel Plated Beryllium Copper Springs. Solder Assembly. Thread Size 6-32.

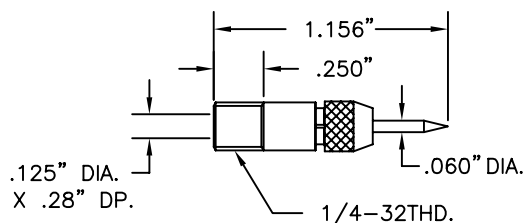
## STANDARD BANANA PLUG FEMALE 6-32 THREAD MOUNTED



Part No.	Description
8205	Standard Banana Plug

**Construction:** Nickel Plated Brass Body and Screw. Tinned Brass Solder Lug. Nickel Plated Beryllium Copper Spring.

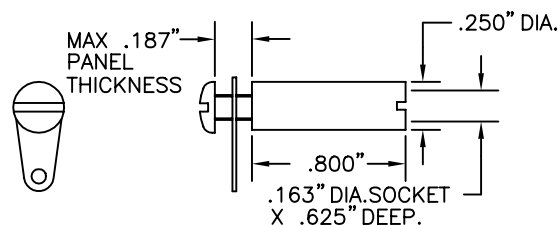
## .060" (1.524mm) NEEDLE TIP



Part No.	Description
8202	Phono Needle Tip
8208	Replacement Tip for P/N 9286 and 32 Probes

**Construction:** Nickel Plated Brass Body. Solder Assembly. 1/4-32 Thread.

## STANDARD BANANA JACK FEMALE 6-32 THREAD MOUNTED

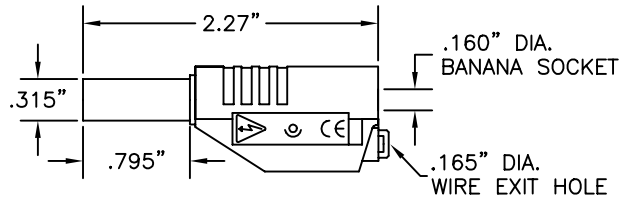


Part No.	Description
8206	Standard Banana Jack

**Construction:** Nickel Plated Brass Body and Screw. Tinned Brass Solder Lug.

## TEST LEAD INTERFACE COMPONENTS

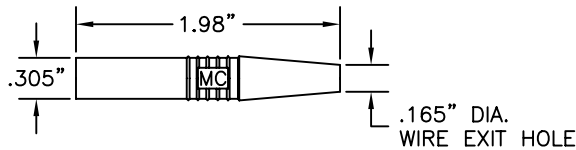
### STACKING SHROUDED BANANA PLUG, ACCEPTS SHROUDED BANANA PLUGS



Part No.	Description
9383	Stacking shrouded banana plug, Accepts Shrouded Plugs

**Construction:** Housing is two piece molded Nylon. Banana Socket & Plug is a one piece machined Brass section with a Beryllium Cu. contact spring. Banana plug tip is insulated. Wire connection is solderless. (IEC 1010 Compliant)  
**Colors:** Red, Black, Yellow, Green, Blue & White.

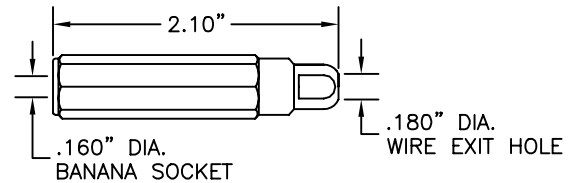
### STRAIGHT SHROUDED BANANA PLUG



Part No.	Description
9386	Straight Shrouded Banana Plug

**Construction:** Housing is one piece molded Nylon. Banana Plug is machined Brass with a contact spring all Nickel plated, Banana plug tip is insulated. Wire connection is soldered. (IEC 1010 Compliant)  
**Colors:** Red & Black only.

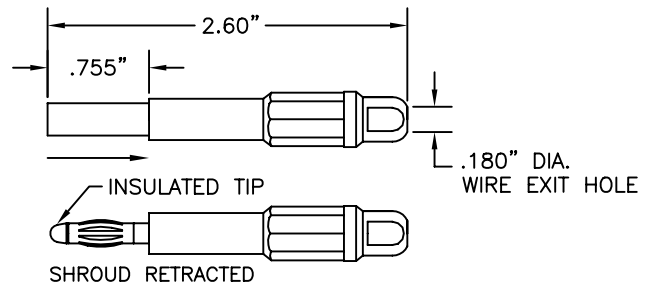
### SHROUDED BANANA SOCKET, ACCEPTS SHROUDED BANANA PLUGS



Part No.	Description
9387	Shrouded Banana Socket, Accepts Shrouded Plugs

**Construction:** Housing is a two piece molded Nylon assembly with a wire collet for strain relief. The Banana Socket is Nickel Plated Brass. Wire connection is soldered.  
**Colors:** Red, Black, Yellow, Green, Blue & White. (IEC 1010 Compliant)

### RETRACTABLE SHROUDED BANANA PLUG



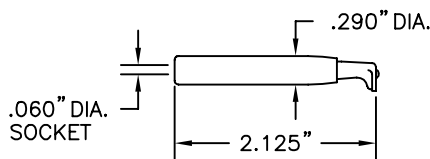
Part No.	Description
9388	Retractable Shrouded Banana Plug

**Construction:** Housing is a three piece molded Nylon assembly with a wire collet for strain relief. Banana Plug has a Brass frame and Be Cu contact spring, both are Nickel plated. Wire connection is soldered. (IEC 1010 Compliant)  
**Colors:** Red, Black, Yellow, Green, Blue & White.

## TEST PROD ADAPTORS & SUBSTITUTION CLIP

**BASIC INFORMATION - Colors:** Red, Black, Blue, Green, Orange, Yellow, White, Brown, Violet and Gray. Specify color when ordering. **Construction:** Nickel-Silver (or Gold-Plated Nickel-Silver) Conductor and Hook, Nickel-Plated (or Gold-Plated) Brass Socket, Durable Nylon Body and Slide, Stainless Steel Compression Coil Spring.

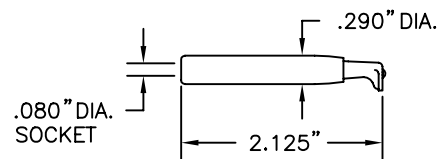
### .060" (1.524mm) TEST PROD TIP ADAPTOR



Part No.	Description
55-0	Standard Clip, .060" (1.524mm) Tip Adaptor
55-2	Gold-Plated Clip, .060" (1.524mm) Tip Adaptor

**Colors:** 10, Specify. See listing in Basic Information.

### .080" (2.03mm) TEST PROD TIP ADAPTOR



Part No.	Description
56-1	Standard Clip, .080" (2.03mm) Tip Adaptor
56-2	Gold-Plated Clip, .080" (2.03mm) Tip Adaptor

**Colors:** 10, Specify. See listing in Basic Information.

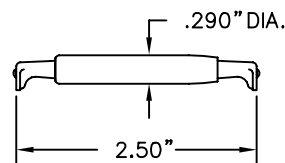
### STANDARD BANANA PLUG TEST PROD TIP ADAPTOR



Part No.	Description
59-4	Standard Clip Standard Banana Plug Tip Adaptor
59-2	Gold-Plated Clip, Standard Banana Plug Tip Adaptor

**Colors:** 10, Specify. See listing in Basic Information.

### PART SUBSTITUTION CLIP



Part No.	Description
71-1	Standard Part Substitution Clip
71-2	Gold-Plated Part Substitution Clip

**Colors:** 10, Specify. See listing in Basic Information.

