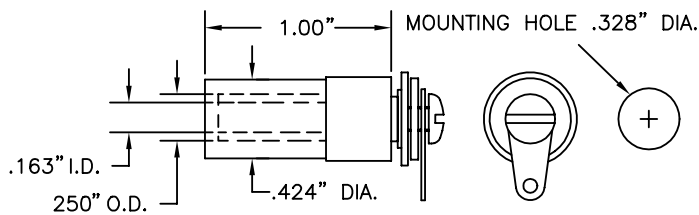


PANEL MOUNTS

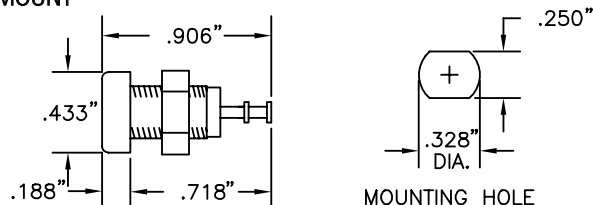
SHROUDED STANDARD BANANA JACK PANEL MOUNT FOR 9302 R/A METER PLUG



Part No.	Description
8207	Shrouded Std. Banana Jack

Construction: Nylon Shroud. Nylon Shoulder. Washer. Cadmium Plated Flat Washer. Hot Tin Plated Lock Washer. Solder Terminal. Nickel Plated Brass 6-32 Screws. Panel Thickness Range .060/.187". Color: Red or Black.

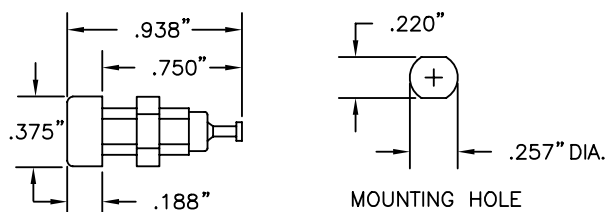
STANDARD BANANA JACK PANEL MOUNT



Part No.	Description
9284-(color)	Standard Banana Jack Panel Mount
9284S	Assortment of 1 each of 10 Colors

Construction: Nylon Body With Recessed Entry Design. Cadmium Plated Brass Contact and Turret Terminal. 5/16-32 UNEF Thread. Nut Furnished. Mounts in .328" (8.33 mm) Hole. For Panel Thickness up to .343" (8.8 mm). Color: 10.

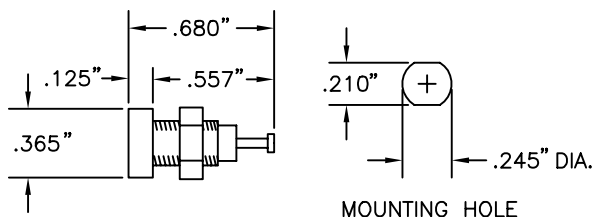
STANDARD .080" (2.03mm) TIP JACK PANEL MOUNT



Part No.	Description
9218-(color)	Standard .080" Tip Jack Panel Mount
9218S	Assortment of 1 each of 10 Colors

Construction: Nylon Body With Recessed Closed Entry Design. Silver Plated Beryllium Copper Contact Spring. Brass Solder Terminal is Hot Tin Dipped. 1/4-32 Nut Furnished. Mounted in 5/16 Hole in Panels up to 1/4" (6.35mm) Thick. Colors: 10.

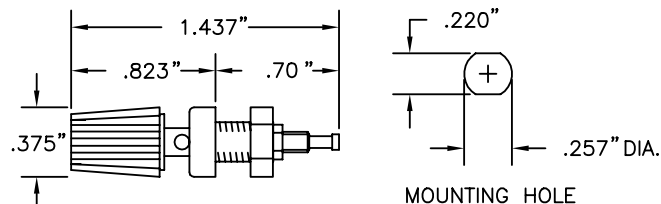
MINIATURE BANANA JACK PANEL MOUNT



Part No.	Description
9283-(color)	Miniature Banana Jack Panel Mount
9283S	Assortment of 1 each of 10 Colors

Construction: Nylon Body With Recessed Entry Design. Cadmium Plated Brass Contact and Terminal. 1/4-32 UNEF Thread. Nut furnished. Mounts in .268" (6.80mm) Hole. For Panel Thickness up to .187" (4.75 mm). Colors: 10.

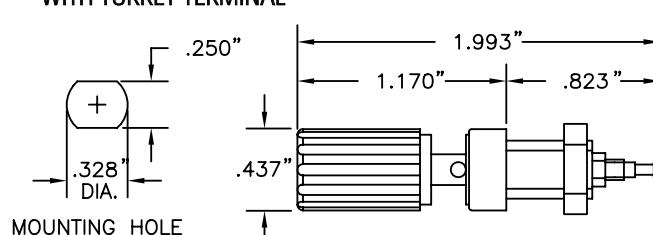
MINIATURE BANANA PLUG BINDING POST FOR .120" (3.05mm) DIA. BANANA PLUG WITH TURRET TERMINAL



Part No.	Description
9278-(color)	Miniature Banana Plug Binding Post

Construction: Nylon Body. 1/4-32 UNEF Thread. For Panel Thickness up to .156" (3.95mm). Rated at 5 Amps, 3,500 VDC. Colors: Red, Black and White.

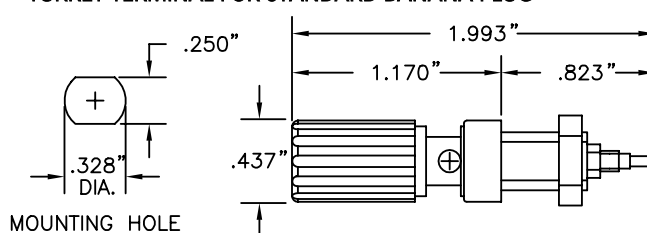
STANDARD BANANA PLUG BINDING POST WITH TURRET TERMINAL



Part No.	Description
9280-(color)	Standard Banana Plug Binding Post

Construction: Nylon Body. 5/16-32 UNEF Thread. For Panel Thickness up to .281" (7.15mm). Rated at 15 Amps, 5,000 VDC. Colors: Red, Black and White.

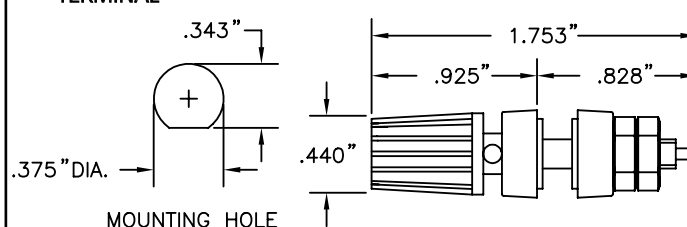
EUROPEAN BINDING POST WITH TURRET TERMINAL FOR STANDARD BANANA PLUG



Part No.	Description
9281-(color)	European Binding Post

Construction: Nylon Body. 5/16-32 UNEF Thread. For Panel Thickness up to .281" (7.15mm). Rated at 15 Amps, 5,000 VDC. Colors: Red, Black and White.

STANDARD BANANA PLUG BINDING POST WITH KEYED INSULATORS AND TURRET TERMINAL

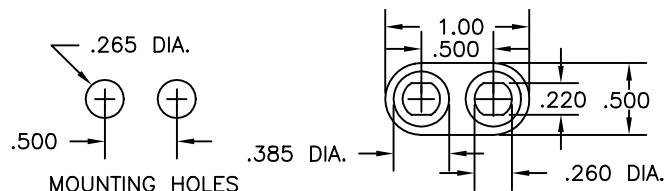


Part No.	Description
9282-(color)	Standard Banana Plug Binding Post

Construction: Metal Body. Bright Tin Plated. For Panel Thickness From .062" (1.58mm) to .250" (6.35mm). Rated at 15 Amps, 1,000 VAC RMS. Color: Red, Black and White.

PANEL MOUNTS

MINIATURE DOUBLE PANEL MOUNT

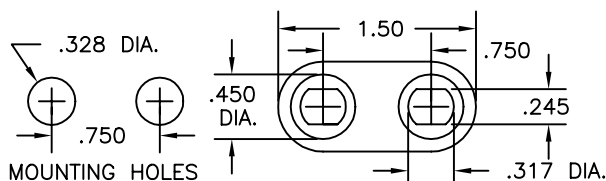


Part No.	Description
8171-(color)	Plastic mounting base, .500" centers

Color: Red or Black

Construction: 1/2" base for double miniature banana jack and binding post mounting base. For use with part numbers 9218, 9278 and 9283.

STANDARD DOUBLE PANEL MOUNT

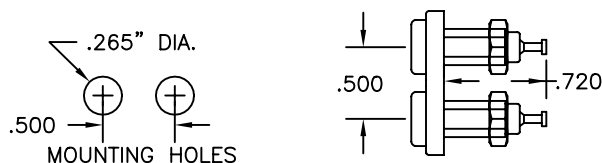


Part No.	Description
8172-(color)	Plastic mounting base, .750" centers

Color: Red or Black

Construction: 3/4" base for standard double banana jack and binding post mounting base. For use with part numbers 9280, 9281 and 9284.

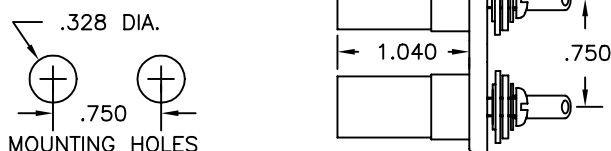
STANDARD DOUBLE .080" (2.03 mm) TIP JACK PANEL MOUNT WITH TURRET TERMINALS



Part No.	Description
9401	Standard .080" Tip Jack Panel Mount

Construction: Nylon Body with recessed closed entry design. Silver-Plated Beryllium Copper Contact Spring. Brass Solder Terminal is Hot Tin Dipped. 1/4-32 Nut furnished. Mounted in .265" hole in panels up to 5/16" (6.35mm) thick. Colors: Red and Black.

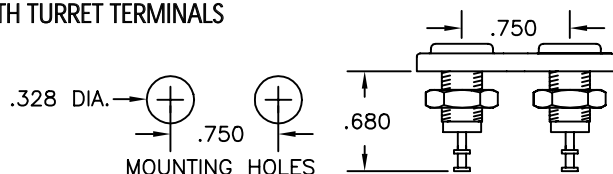
SHROUDED STANDARD DOUBLE BANANA JACK PANEL MOUNT



Part No.	Description
9408	Shrouded Std. Double Banana Jack

Construction: Nylon base and shrouds. nylon shoulder washers. cadmium plated flat washers. hot tin plated lock washer solder terminals. nickel plated brass 6-32 screws. Max thickness .187". Colors: 1-Red, 1-Black, Red or Black base. (Specify base color)

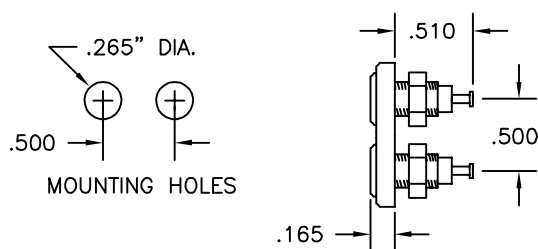
STANDARD DOUBLE BANANA JACK PANEL MOUNT WITH TURRET TERMINALS



Part No.	Description
9405	Double Std. Banana Jack

Construction: Nylon Body with recessed entry design. Cadmium plated brass contact and turret terminal. 5/16-32 UNEF thread. Nuts furnished. Max panel thickness: .187" (4.74mm). Color: 1 red, 1 black socket, red or black base. (Specify base color)

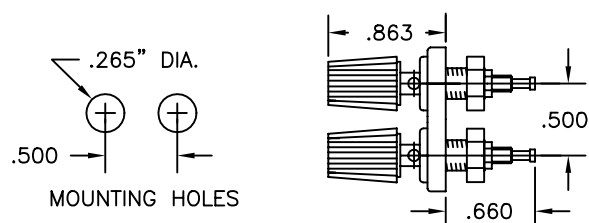
MINIATURE DOUBLE BANANA JACK PANEL MOUNT WITH TURRET TERMINALS



Part No.	Description
9402	Miniature Banana Jack Panel Mount

Construction: Nylon body with recessed entry design. Cadmium plated brass contact and terminal. 1/4-32 UNEF thread. Nut furnished. Mounts in .268" (6.80mm) hole. For panel thickness up to .156" (4.75mm). Color: Red and Black.

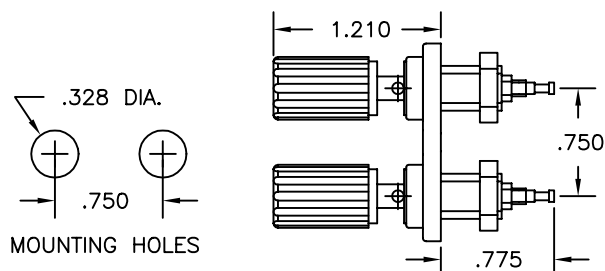
MINIATURE DOUBLE BANANA JACK BINDING POST FOR .120" (3.05mm) DIA. BANANA PLUG WITH TURRET TERMINAL



Part No.	Description
9404	Double Miniature Banana Plug Binding Post

Construction: Nylon Body, 1/4-32 UNEF Thread. for panel thickness up to .156" (3.95mm). Rated at 5 Amps, 5000 VDC. Colors: Red and Black.

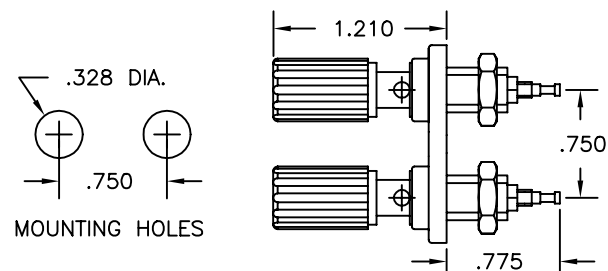
STANDARD DOUBLE BANANA JACK BINDING POST WITH TURRET TERMINAL



Part No.	Description
9406	Double Standard Banana Plug Binding Post

Construction: Nylon Body 5/16-32 UNEF Thread. for panel thickness up to .250" (7.15mm). Rated at 15 Amps, 8000 VDC. Colors: Red and Black.

EUROPEAN DOUBLE BINDING JACK WITH TURRET TERMINAL FOR STANDARD BANANA PLUG



Part No.	Description
9407	European Binding Post

Construction: Nylon Body. 5/16-32 UNEF Thread. for panel thickness up to .250" (7.15mm). Rated at 15 Amps, 8000 VDC. Colors: Red and Black.