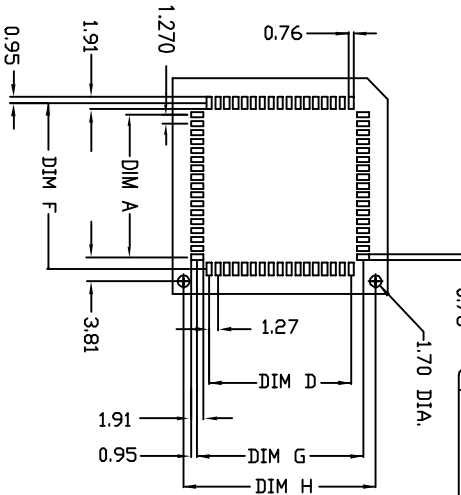
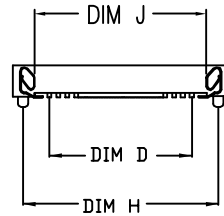
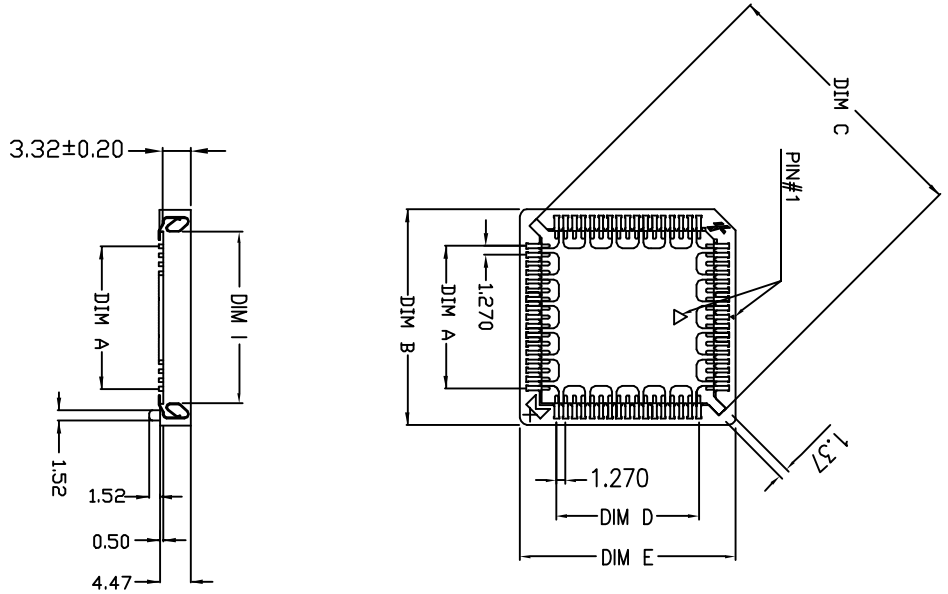


PRODUCT NO.  
SEE NOTE



RECOMMENDED P.C.B LAYOUT

mat'l. code		tolerances unless otherwise specified		CUSTOMER COPY		title	
ltr	ecr no	dr	date				
X	T60008	AC	02/08/96	linear	.XX ±0.38	projection	FCI Electronics
Y	T10136	JH	03/18/01		.XX ±0.25		www.fciconnect.com
AA	T03-0452	JC	10/15/03	angles	0° ±2°	mm	PLCC SMT SOCKET
AB	T05-0017	W.L	01/24/05	dr	JASON HSU	3/16/00	PLCC-XXP-T-SMT
AC	T05-0114	W.L	05/09/05	engr	JASON HSU	3/16/00	product family PLCC
AD	T05-0212	W.L	09/21/05	chr	J. TSAO	3/16/00	size dwg no
AE	T06-0070	JH	05/08/06	ppd	L. WANG	3/16/00	code TWN
sheet	revision	AE	AE	AE	AE	AE	code
index	sheet	1	2	3	4	5	sheet
							1 of

TABLE I

No. of contact	DIM. A ±0.20	DIM. B ±0.20	DIM. C ±0.20	DIM. D ±0.20	DIM. E Max.	DIM. F ±0.10	DIM. G ±0.10	DIM. H ±0.20	DIM. I ±0.20	DIM. J ±0.20
20	5.08	15.24	16.70	5.08	15.24	8.48	8.48	12.70	9.40	
28	7.62	17.78	20.30	7.62	17.78	11.02	11.02	15.24	11.94	
32	7.62	17.78	22.50	10.16	20.32	11.02	13.56	17.78	11.94	14.48
44	12.70	22.86	27.50	12.70	22.86	16.10	16.10	20.32	17.02	
52	15.24	25.40	31.10	15.24	25.40	18.64	18.64	22.86	19.56	
68	20.32	30.82	38.30	20.32	30.82	23.27	23.27	27.94	24.64	
84	25.40	35.90	45.50	25.40	35.90	28.80	28.80	33.02	29.72	

TABLE II

PART NO.	WITH POLARIZING PEGS	PACKAGING BY PVC TUBE	PACKAGING BY TAPE & REEL	MCK PART NO.
69802-0XX	✓	✓		PLCC-XXP-T-SMT-P
69802-1XX		✓		PLCC-XXP-T-SMT
69802-4XX			✓	PLCC-XXP-T-SMT-TR
69802-0XXPT	✓	✓		PLCC-XXP-T-SMT-P-PT
69802-1XXPT		✓		PLCC-XXP-T-SMT-PT
69802-4XXPT			✓	PLCC-XXP-T-SMT-TR-PT
69802-0XXLF	✓			PLCC-XXP-T-SMT-P-LF
69802-1XXLF		✓		PLCC-XXP-T-SMT-LF
69802-4XXLF			✓	PLCC-XXP-T-SMT-TR-LF

NOTE:

ORDERING DATA: 69802- X XX XX

LF: Lead Free  
PT: PURE TIN PLATED.  
BLANK; TIN/LEAD PLATED.

NO OF CONTACTS

SEE TABLE II.

mat'l. code		tolerances unless otherwise specified		CUSTOMER COPY		title	
ltr	ecn no	dr	date	lineur	projection	product family	code
AE				.XX ±0.25	mm	PLCC SMT SOCKET	
				.XXX ±0.20	mm	PLCC-XXP-T-SMT	
				0° ±2°	mm		
				dr JASON HSU 3/16/00	scale	size dwg no	
				engr JASON HSU 3/16/00	N/A	PLCC	
				chr J. TSAO 3/16/00			
				dpdd L. WANG 3/16/00			
sheet	revision						
index	sheet						

69802

code  
TWIN  
sheet  
2 of

Specification:

1) Material :

1-1 Housing : PPS,UL94V-0 Color in Brown.

Plating : 150u" Tin/Lead or Pure Tin Min. Over 40u"      Insertion Force : 13 lb Max. (20P) MAX.

Nickel Min.

Contact : Copper Alloy.

2) Electrical :

Rated Voltage : 120V AC/DC

Current Rating : 1.0A AC/DC

Contact Resistance : 20m $\Omega$  Max.

Insulation Resistance : 10000M $\Omega$  min..

Withstanding Voltage : 600V AC(RMS) 1 minute

3) Mechanical:

Contact Retention: 283g min.

13 lb Max. (20P) MAX.

15 lb Max. (28P)

15 lb Max. (32P)

19 lb Max. (44P)

22 lb Max. (52P)

26 lb Max. (68P)

33 lb Max. (84P)

Withdrawal Force : 1.1 lb min. (20P) MIN.

1.1 lb Max. (28P)

1.5 lb Max. (32P)

2.0 lb Max. (44P)

3.5 lb Max. (52P)

4.0 lb Max. (68P)

4.5 lb Max. (84P)

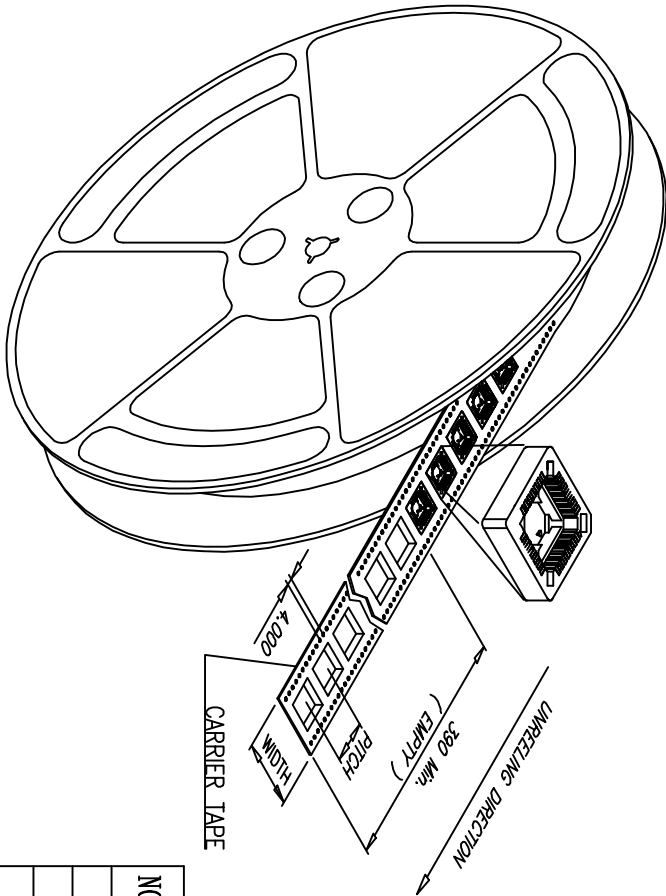
#### 4) Environmental :

Operating Temperature Range :  $-55^{\circ}\text{C} \sim +125^{\circ}\text{C}$

5) MANUFACTURING PROCESS COMPATIBILITY: THE HOUSING WILL WITHSTAND EXPOSURE

TO 245°C PEAK TEMPERATURE FOR 5 SECOND IN A IR REFLOW APPLICATION.

[illegible]



NO. OF PIN.	WIDTH	PITCH	PCS/REEL	REEL/CARTON	TOTAL (PCS)
20P	24.0	24.00	470	12	5640
28P	32.0	24.00	390	10	3900
32P	32.0	24.00	390	10	3900
44P	44.0	32.00	250	8	2000
52P	44.0	32.00	250	8	2000
68P	44.0	36.00	220	8	1760
84P	56.0	40.00	200	6	1200

\* REEL DIAMETER:  $\phi 13$  in"

mat'l. code		tolerances unless otherwise specified		CUSTOMER COPY		FCI Electronics www.fciconnect.com	
ltr	ecn no	dr	date	linear	projection	title	
AE				.XX $\pm 0.25$	$\phi$	PLCC SMT SOCKET	
				.XXX $\pm 0.20$	$\pm 2^\circ$	PLCC-XXP-T-SMT-TR	
				angles	mm	product family	code
				dr	JASON HSU	3/16/00	TWIN
				engr	JASON HSU	3/16/00	
				chr	J. TSAO	3/16/00	
				appd	L. WANG	3/16/00	
sheet	revision			scale	N/A	A4	code
index	sheet						24180

B

A

form no. 7530-001-103

1

2

3

4

B

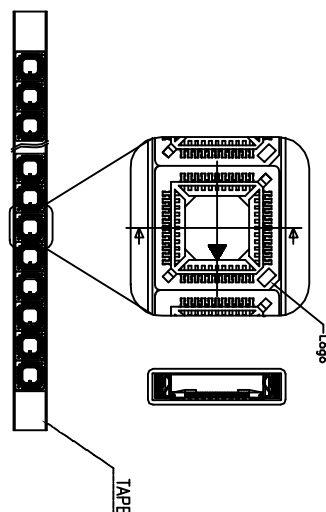
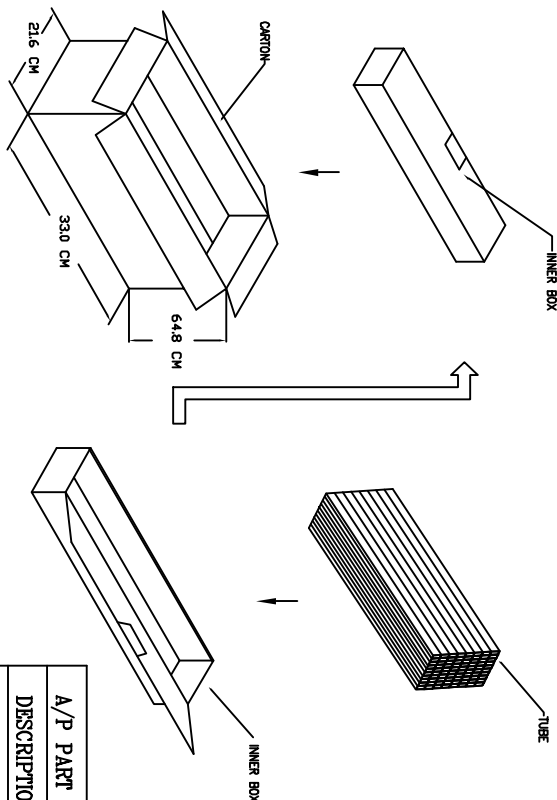
A

1

2

3

4



PACKAGING DIRECTION FOR PVC TUBE

A/P PART NO.	69802-X20X	69802-X28X	69802-X32X	69802-X44X	69802-X52X	69802-X68X	69802-X84X
DESCRIPTION	20P	28P	32P	44P	52P	68P	84P
PCS/TUBE	37	32	28	25	23	18	16
PCS/INNER BOX	1110	832	728	500	460	270	224
INNER BOX/CARTON	10	10	10	10	10	10	10
TOTAL (PCS)	11100	8320	7280	5000	4600	2700	2240
N.W	12.5 kg	10.5 kg	10.0 kg	8.5 kg	8.0 kg	7.5 kg	7.0 kg
G.W	20.0 kg	18.5 kg	18.0 kg	17.0 kg	16.5 kg	16.0 kg	15.5 kg

mod'l. code		tolerances unless otherwise specified		CUSTOMER COPY		title	
tr	ecn no	dr	date	.X ±0.38	projection	size	dwg no
AE				.XX ±0.25	mm	A4	69802
				.XXX ±0.20	scale		
				0° ±2°	N/A		
				dr	JASON HSU	3/16/00	product family
				engr	JASON HSU	3/16/00	PLCC
				chr	J. TSO	3/16/00	PLCC SMT SOCKET
				appd	L. WANG	3/16/00	PLCC-XP-T-SMT
sheet	revision						code
index	sheet						TWN
							sheet
							5 of

code code  
24180