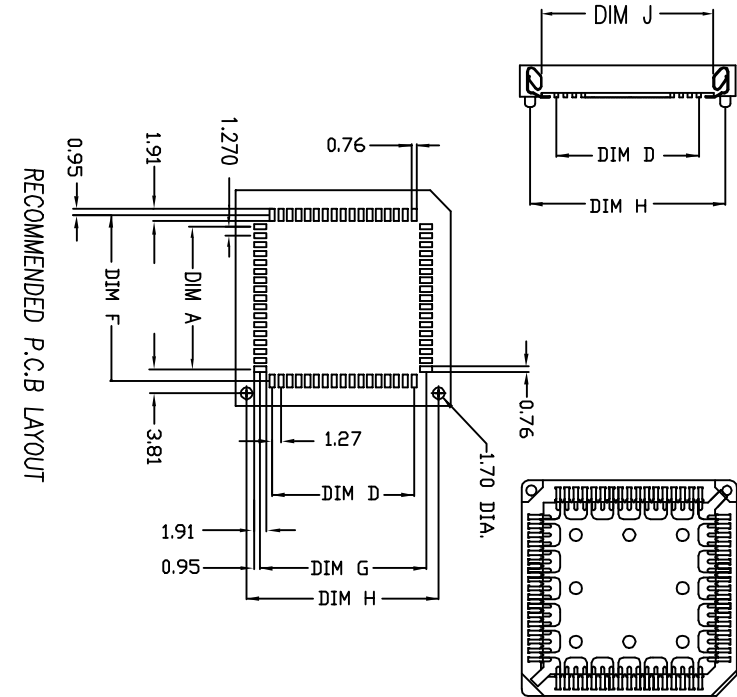
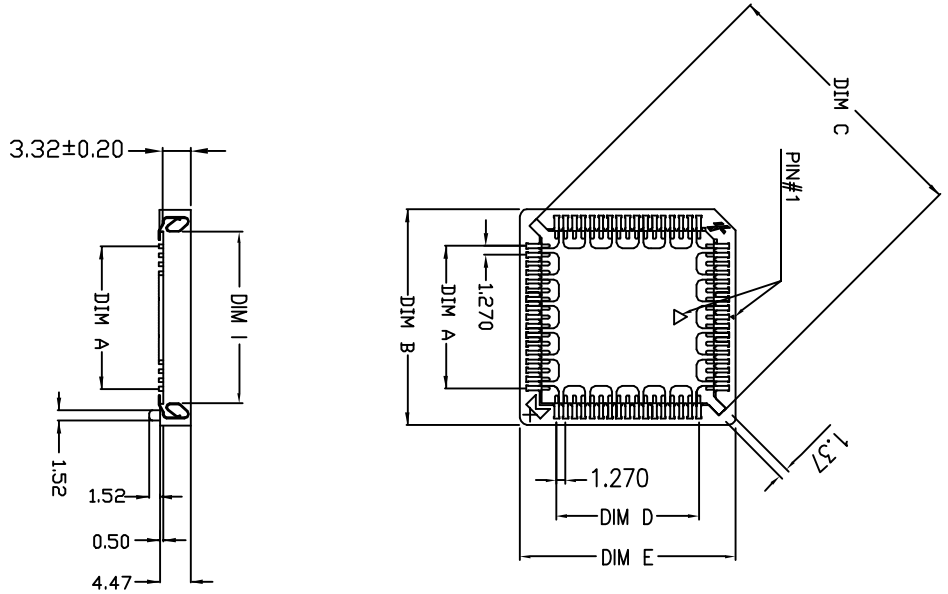


PRODUCT NO.
SEE NOTE



RECOMMENDED P.C.B LAYOUT

mat'l. code		tolerances unless otherwise specified		CUSTOMER COPY		title	
lt	ecr no	dr	date				
X	T60008	AC	P2/08/96	linear	.XX ±0.38		PLCC SMT SOCKET
Y	T10136	JH	03/18/01		.XXX ±0.25		PLCC-XXP-T-SMT
AA	T03-0452	JC	10/15/03	angles	0° ±2°		
AB	T05-0017	W.L	P1/24/05	dr	JASON HSU	3/16/00	
AC	T05-0114	W.L	P5/09/05	engr	JASON HSU	3/16/00	
AD	T05-0212	W.L	P9/21/05	chr	J. TSAO	3/16/00	
AE	T06-0070	JH	05/8/06	ppd	L. WANG	3/16/00	
sheet	revision	AE	AE	AE	AE	AE	
index	sheet	1	2	3	4	5	

form no. 7530-001-103

1

2

3

4

code code
24180

TABLE I

No. of contact	DIM. A ±0.20	DIM. B ±0.20	DIM. C ±0.20	DIM. D ±0.20	DIM. E Max.	DIM. F ±0.10	DIM. G ±0.10	DIM. H ±0.20	DIM. I ±0.20	DIM. J ±0.20
20	5.08	15.24	16.70	5.08	15.24	8.48	8.48	12.70	9.40	
28	7.62	17.78	20.30	7.62	17.78	11.02	11.02	15.24	11.94	
32	7.62	17.78	22.50	10.16	20.32	11.02	13.56	17.78	11.94	14.48
44	12.70	22.86	27.50	12.70	22.86	16.10	16.10	20.32	17.02	
52	15.24	25.40	31.10	15.24	25.40	18.64	18.64	22.86	19.56	
68	20.32	30.82	38.30	20.32	30.82	23.27	23.27	27.94	24.64	
84	25.40	35.90	45.50	25.40	35.90	28.80	28.80	33.02	29.72	

TABLE II

PART NO.	WITH POLARIZING PEGS	PACKAGING BY PVC TUBE	PACKAGING BY TAPE & REEL	MCK PART NO.
69802-0XX	✓	✓		PLCC-XXP-T-SMT-P
69802-1XX		✓		PLCC-XXP-T-SMT
69802-4XX			✓	PLCC-XXP-T-SMT-TR
69802-0XXPT	✓	✓		PLCC-XXP-T-SMT-P-PT
69802-1XXPT		✓		PLCC-XXP-T-SMT-PT
69802-4XXPT		✓	✓	PLCC-XXP-T-SMT-TR-PT
69802-0XXLF	✓			PLCC-XXP-T-SMT-P-LF
69802-1XXLF		✓		PLCC-XXP-T-SMT-LF
69802-4XXLF			✓	PLCC-XXP-T-SMT-TR-LF

NOTE:

ORDERING DATA: 69802- X XX XX

LF: Lead Free
PT: PURE TIN PLATED.
BLANK; TIN/LEAD PLATED.

NO OF CONTACTS

SEE TABLE II.

mat'l. code		tolerances unless otherwise specified		CUSTOMER COPY		FCI Electronics www.fciconnect.com	
ltr	ecn no	dr	date	lineur	projection	title	
AE				.XX ±0.25	0° ±2°	PLCC SMT SOCKET	
				.XXX ±0.20	mm	PLCC-XXP-T-SMT	
				engr JASON HSU 3/16/00	scale	product family PLCC	code
				chr J. TSAO 3/16/00	N/A	size dwg no	TWN
				dppd L. WANG 3/16/00		69802	sheet
sheet	revision						2 of
index	sheet						

1) Material :

1-1 Housing : PPS,UL94V-0 Color in Brown.

Plating : 150u" Tin/Lead or Pure Tin Min. Over 40u" Insertion Force : 13 lb Max. (20P) MAX.

Nickel Min.

Contact : Copper Alloy.

2) Electrical :

Rated Voltage : 120V AC/DC

Current Rating : 1.0A AC/DC

Contact Resistance : 20m Ω Max.

Insulation Resistance : 10000M Ω min.

Withstanding Voltage : 600V AC(RMS) 1 minute

3) Mechanical:

Contact Retention: 283g min.

13 lb Max. (20P) MAX.

15 lb Max. (28P)

15 lb Max. (32P)

19 lb Max. (44P)

22 lb Max. (52P)

26 lb Max. (68P)

33 lb Max. (84P)

Withdrawal Force : 1.1 lb min. (20P) MIN.

1.1 lb Max. (28P)

1.5 lb Max. (32P)

2.0 lb Max. (44P)

3.5 lb Max. (52P)

4.0 lb Max. (68P)


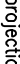
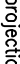
4.5 lb Max. (84P)

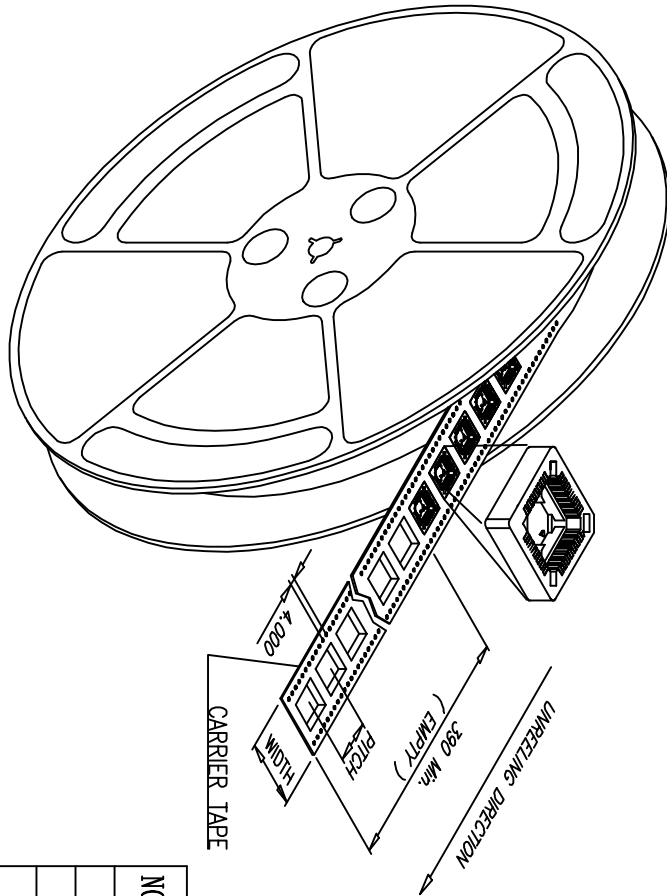
4) Environmental :

Operating Temperature Range : $-55^{\circ}\text{C} \sim +125^{\circ}\text{C}$

5) MANUFACTURING PROCESS COMPATIBILITY: THE HOUSING WILL WITHSTAND EXPOSURE

TO 245°C PEAK TEMPERATURE FOR 5 SECOND IN A IR REFLOW APPLICATION.

mat'l. code				tolerances unless otherwise specified				CUSTOMER COPY		 FCI Electronics www.fciconnect.com	
ltr	ecn no	dr	date	linear		.X ±0.38 .XX ±0.25 .XXX ±0.20		projection 		title PLCC SMT SOCKET PLCC-XXP-T-SMT	
AE				angles		0° ±2°				product family PLCC	
				dr		JASON HSU 3/16/00		mm ↔		size dwg no 69802	
				engr		JASON HSU 3/16/00		scale N/A		A4	
				chr		J. TSAO 3/16/00					
				qppd		L. WANG 3/16/00					
sheet index	revision sheet										



NO. OF PIN.	WIDTH	PITCH	PCS/REEL	REEL/CARTON	TOTAL (PCS)
20P	24.0	24.00	470	12	5640
28P	32.0	24.00	390	10	3900
32P	32.0	24.00	390	10	3900
44P	44.0	32.00	250	8	2000
52P	44.0	32.00	250	8	2000
68P	44.0	36.00	220	8	1760
84P	56.0	40.00	200	6	1200

* REEL DIAMETER: 13 in"

mat'l. code			tolerances unless otherwise specified			CUSTOMER COPY		FCI Electronics www.fciconnect.com	
ltr	ecn no	dr	date	linear	.XX ±0.25 .XXX ±0.20 0° ±2°	projection	mm	title	code
AE				angles				PLCC SMT SOCKET	TWIN
				dr	JASON HSU 3/16/00			PLCC-XXP-T-SMT-TR	sheet
				engr	JASON HSU 3/16/00				4 of
				chr	J. TSAO 3/16/00				
				appd	L. WANG 3/16/00				
sheet	revision								
index	sheet								

B

A

form no. 7530-001-103

1

2

3

4

B

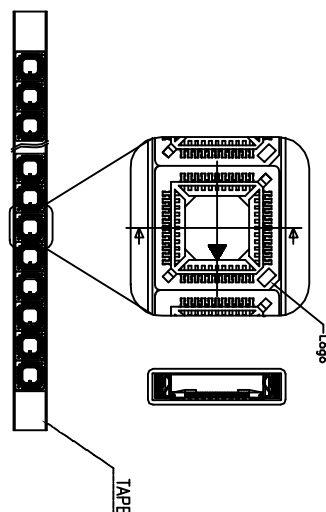
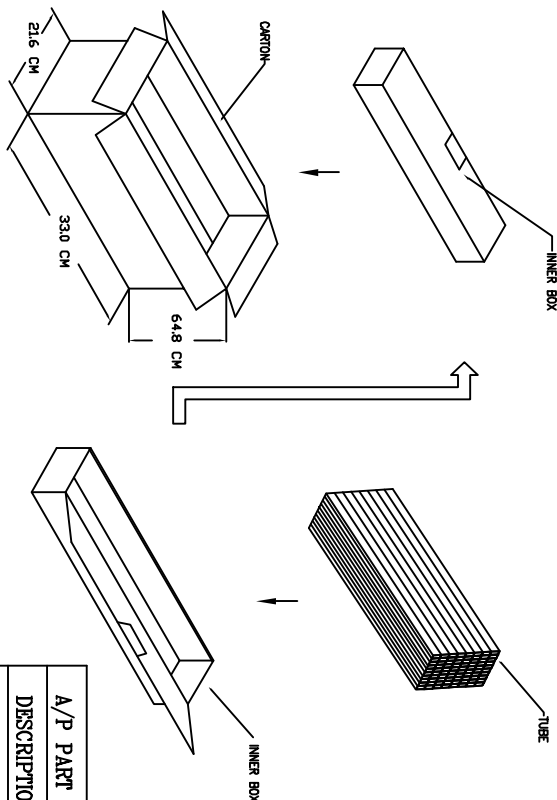
A

1

2

3

4



PACKAGING DIRECTION FOR PVC TUBE

A/P PART NO.	69802-X20X	69802-X28X	69802-X32X	69802-X44X	69802-X52X	69802-X68X	69802-X84X
DESCRIPTION	20P	28P	32P	44P	52P	68P	84P
PCS/TUBE	37	32	28	25	23	18	16
PCS/INNER BOX	1110	832	728	500	460	270	224
INNER BOX/CARTON	10	10	10	10	10	10	10
TOTAL (PCS)	11100	8320	7280	5000	4600	2700	2240
N.W	12.5 kg	10.5 kg	10.0 kg	8.5 kg	8.0 kg	7.5 kg	7.0 kg
G.W	20.0 kg	18.5 kg	18.0 kg	17.0 kg	16.5 kg	16.0 kg	15.5 kg

mod'l. code		tolerances unless otherwise specified		CUSTOMER COPY		title	
tr	ecn no	dr	date	linear		PLCC SMT SOCKET	
AE				.XX ±0.38		PLCC-XP-T-SMT	
				.XXX ±0.20			
				angles 0° ±2°			
				dr JASON HSU 3/16/00		product family PLCC	
				engr JASON HSU 3/16/00		size dwg no	
				chr J. TSO 3/16/00		69802	
				appd L. WANG 3/16/00		code	
sheet	revision			scale		TWN	
index	sheet			N/A		sheet	
						5 of	

code code
24180