

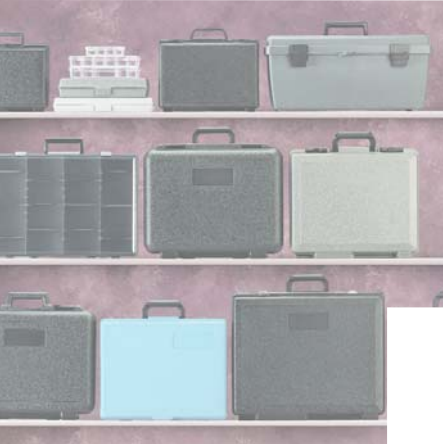
# Express Service<sup>SM</sup>

**What You Need,  
When You Need It.**

Flambeau's Express Service line of stock products is our way of providing the industry's most comprehensive selection of "off-the-shelf" carrying cases, compartmented boxes, and specialty storage containers for immediate shipment. From a single case to several hundred tool boxes, Express Service offers what you need, when you need it. (Certain products require quantity orders.)

To place your order, select the item you need and the corresponding stock number. Call toll free 1-800-344-5716 to place your order. For your convenience, we accept Master Card, VISA and American Express.



**In-Stock Products for Immediate Shipment**
**Infinity™  
Cases**
**No  
Minimums**
**The next generation of blow molded cases**

Designed to succeed the famous Airmold® P-Series tradition. The contemporary design of the new INFINITY™ Case not only looks professional, it also has the performance to match! Built-in features include:

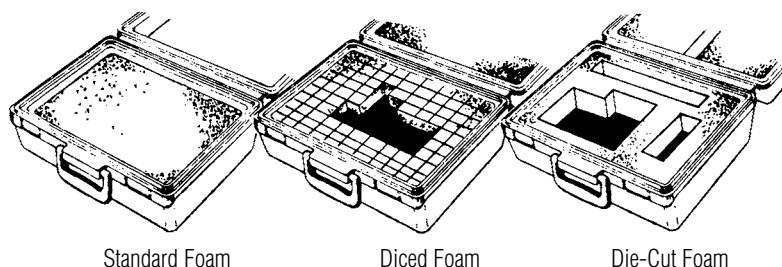
- Cam-over ABS latches.
- Textured finish to reduce dents and scratches.
- Stock foam and custom options.
- Lid dust seal.
- Interlock joints to add strength.
- Applications Include: Power Tool Storage, Hand Tool Storage, Instrumentation Equipment, Audio/Visual Equipment, Medical Products.

**Ordering Information**

| Description  | Stock No. | Outside Dimensions<br>Length x Width x Depth | Inside Dimensions<br>Length x Width x Depth | Features   |
|--------------|-----------|--|---|--|
| Infinity™ 12 | 50250     | 12 x 9 x 2-1/2                               | 10-1/2 x 7-1/2 x 1-13/16                    | Double Wall  |
| Infinity™ 14 | 50330     | 14 x 10-1/2 x 4                              | 12-1/2 x 9 x 3-5/16                         | Double Wall  |
| Infinity™ 14 | 50350     | 14 x 10-1/2 x 5                              | 12-1/2 x 9 x 3-5/16                         | Integral Hinge   |
| Infinity™ 14 | 50351     | 14 x 10-1/2 x 5                              | 12-1/2 x 9 x 3-5/16                         | Pin Hinge  |
| Infinity™ 17 | 50410     | 17 x 14-1/4 x 4-1/2                          | 15-1/2 x 11-3/16 x 3-1/2                    | Double Wall  |
| Infinity™ 17 | 50430     | 17 x 14-1/4 x 6-1/2                          | 15-1/2 x 11-3/16 x 5-1/2                    | Double Wall  |
| Infinity™ 20 | 50470     | 20 x 15 x 5-1/2                              | 18-1/2 x 13-3/4 x 4-1/2                     | Double Wall; Fold Down Handle                                      |
| Infinity™ 20 | 50474     | 20 x 15 x 5-1/2                              | 18-1/2 x 13-3/4 x 4-1/2                     | Holds Tool Pallets; 2 Lid Stays; Shoulder Strap; and Metal Latches |
| Infinity™ 20 | 50500     | 20 x 15 x 8-1/2                              | 18-1/2 x 13-3/4 x 7-1/2                     | Double Wall; Fold Down Handle                                      |

**Foam Options**

If you require extra product protection, Flambeau provides three foam options:



Standard Foam

Diced Foam

Die-Cut Foam

*In-Stock Products for Immediate Shipment*

**No  
Minimums**

## Most Popular Pin Hinge Style Blow Molded Cases

Flambeau manufacturing facilities in North Carolina and California stock the most popular sizes of blow molded cases for immediate delivery (see table below). Routed interiors with standard foam sets are available as part of our Express Service<sup>SM</sup>.

### Ordering Information

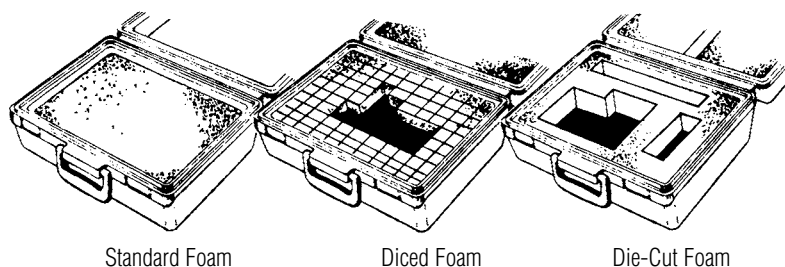
| Stock Number | Description | Exterior Dimensions (inches) | Interior Dimensions          | Special Features |
|--------------|-------------|------------------------------|------------------------------|------------------|
| 50032        | PC 3-9/16   | 8-1/2 x 7-13/16 x 3-9/16     | 7-9/16 x 5-7/8 x 3-1/4       | single latch     |
| 50048        | PH 3-1/8    | 10 x 8-5/16 x 3-1/8          | 9-1/8 x 6-1/2 x 2-13/16      | single latch     |
| 50025        | PQ 3-7/8    | 12-1/4 x 8-13/16 x 3-7/8     | 11-3/8 x 7 x 3-9/16          | double latch     |
| 50024        | PV 4        | 13-1/2 x 10-13/16 x 4        | 12-11/16 x 8-15/16 x 3-11/16 | double latch     |
| 50026        | PV 5-1/8    | 13-1/2 x 10-13/16 x 5-1/8    | 12-11/16 x 8-15/16 x 4-3/4   | double latch     |
| 50030        | PW 4        | 15-1/2 x 13-5/16 x 4         | 14 x 10-3/4 x 3-1/2          | double latch     |
| 50053        | PW 6-1/4    | 15-1/2 x 13-5/16 x 6-1/4     | 14 x 10-3/4 x 5-3/4          | metal lock latch |
| 50050        | PX 5        | 18-1/2 x 15-9/16 x 5         | 17 x 13 x 4-1/2              | metal lock latch |
| 50051        | PX 8        | 18-1/2 x 15-9/16 x 8         | 17 x 13 x 7-3/8              | metal lock latch |
| 50045        | PZ 4-1/2    | 26 x 16-9/16 x 4-1/2         | 24-1/2 x 13 x 4              | routed base      |
| 50088        | PZ 8        | 26 x 15-9/16 x 8             | 24-1/2 x 13 x 7-3/8          | routed base      |

### FEATURES

- Molded from high density polyethylene.
- All cases are equipped with fold down handles.
- Resistant to gas, oil, and most household chemicals.
- Usable in a wide temperature range.
- Will not rust or corrode.
- Scratch and dent resistant.
- Cases are black with textured exteriors.

## Foam Options

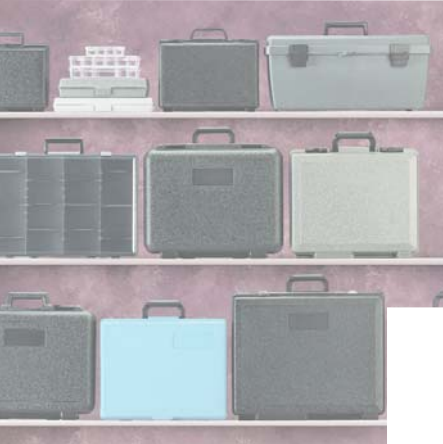
If you require extra product protection, Flambeau provides three foam options:



Standard Foam

Diced Foam

Die-Cut Foam



***In-Stock Products for Immediate Shipment***



## Special Storage Products

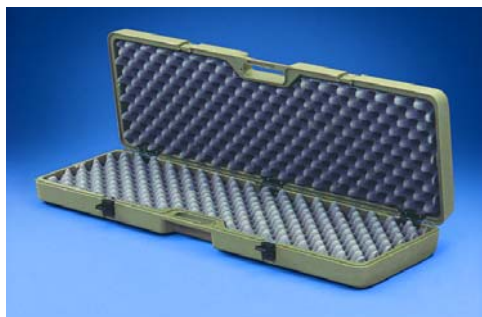
With Flambeau, you can count on quality products, innovative packaging and exceptional value!



Work Center Fold™



Tailgator™



Large Locker Case



Expandable Tube

### Ordering Information

| Stock Number | Description                   | Inside Dimensions (inches)<br>Length x Width x Depth | Features  |
|--------------|-------------------------------|--|---|
| 50077        | Expandable Tube               | 3-1/4 diameter x 61-1/2 to 85-1/2 length             | Extends to hold very long items                 |
| 50063        | Large Locker Case             | 51-1/2 x 8-7/8 x 3-3/4                               | Locking metal latches; double wall construction |
| 50064        | Extra Wide Locker Case        | 51-1/2 x 12-7/8 x 3-3/4                              | Locking metal latches; double wall construction |
| 50084        | Work Center Fold™             | 24 x 48 work surface; 4-1/2 deep closed              | Contains multiple storage areas                 |
| 50065        | Tailgator™ (With Interior)    | 35-3/4 x 16-3/4 x 10-1/4                             | Includes 2 dividers and 1 shelf                 |
| 50066        | Tailgator™ (Without Interior) | 35-3/4 x 16-3/4 x 10-1/4                             | No dividers or shelf                            |
| 50067        | Divider for Tailgator™        | —  | Divider only                                    |
| 50068        | Shelf for Tailgator™          | —  | Shelf only                                      |

*In-Stock Products for Immediate Shipment*

**No  
Minimums**

## Conductive Cases with Standard Antistatic Foam

Features Include:

- Full two year warranty.
- Antistatic or conductive foam available for installation.  
(Conductive foam quoted separately)
- Molded from a proprietary high density polyethylene carbon loaded blend of materials.
- Conductive < 10<sup>5</sup> Ohms/in<sup>2</sup>.
- Anti-Static: 10<sup>9</sup> to 10<sup>13</sup> Ohms/in<sup>2</sup>.
- Faraday Cage Protection.

### Ordering Information

| Stock Number | Description | Inside Dimensions<br>L x W x H           |
|--------------|-------------|--|
| 50019        | 5 x 3       | 5-1/16 x 2-3/4 x 1                       |
| 50018        | 7 x 5       | 6-1/2 x 4-3/4 x 1-1/16                   |
| 50036        | RA 1-3/4    | 6-3/4 x 5 x 1-3/16                       |
| 50014        | 9 x 7       | 8-15/16 x 6-5/8 x 1-1/4                  |
| 50015        | 12 x 8      | 11-7/8 x 8-3/16 x 1-1/4                  |
| 50016        | 13 x 11     | 12-3/4 x 10-1/2 x 1-3/4                  |
| 50017        | 15 x 6      | 15 x 6-1/2 x 2                           |
| 50023        | 18 x 14     | 17-1/2 x 13-1/2 x 1-5/16                 |
| 50021        | 18 x 18     | 18-7/16 x 17-11/16 x 1-15/16             |
| 50035        | VME 12 x 9  | 12-3/8 x 8-15/16 x 1-1/4 molded interior |



***In-Stock Products for Immediate Shipment***

## Medical Products

Our extensive line of stock medical products is available in a wide variety of styles, sizes and configurations to suit your needs.

Manufactured from rustproof, dentproof and chemical resistant co-polymer resins.



## First Aid Boxes

- 3 popular styles.
- PM1702 features removable tray - great for bulk supplies.
- PM1772 features 8 large compartments - ideal for bandages and larger items.
- PM1872 features 2 tip-proof trays, 9 compartments.

| Model Number | L x W x D                | Number of Compts. | Pack Per Ctn. |
|--------------|--------------------------|-------------------|---------------|
| PM1702       | 16-1/2 x 8-3/4, x 7-1/2  | 2                 | 4             |
| PM1772       | 16-1/2 x 8-3/4, x 7-1/2  | 8                 | 4             |
| PM1872       | 17-5/8 x 10-1/4, x 8-3/4 | 9                 | 4             |



## Instrument Boxes

- 5 standard sizes.
- Ideal for small or delicate equipment.
- Durable polypropylene construction.
- Safe for autoclaves.

| Model Number | L x W x D                | Standard Colors | Number of Compts. | Pack Per Ctn. |
|--------------|--------------------------|-----------------|-------------------|---------------|
| V301         | 7 -1/4 x 3-1/2 x 1-1/8   | Orange          | 1                 | 36            |
| V401         | 8-3/8 x 4-1/2 x 1-11/16  | Sand            | 1                 | 24            |
| V501         | 10-3/8 x 4-1/2 x 1-11/16 | Sand            | 1                 | 24            |
| V601         | 14 x 6-1/4 x 2-1/2       | Sand            | 1                 | 12            |
| V701         | 17-1/2 x 7-3/4 x 2-3/8   | Sand            | 1                 | 6             |

*In-Stock Products for Immediate Shipment*

## Utility Boxes and Utility Boxes with Lift-Out Trays

Flambeau offers a versatile line of rugged utility and tool boxes for a multitude of packaging and storage needs. These products are lightweight, rust-proof, dent-proof and scratch-resistant. Positive latches, tough recessed handles and tongue and groove construction provide the best value in our tool box line.

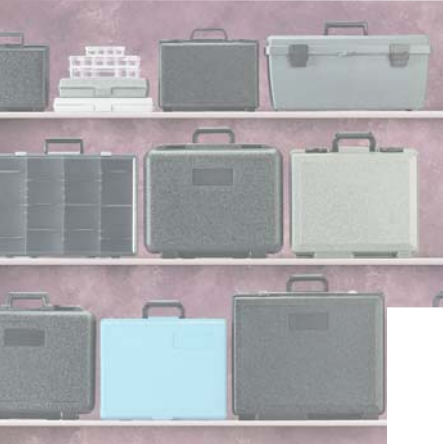
### Ordering Information/Utility Boxes

| Stock Number | Description | Exterior Dimensions     | Std. Pack | Weight (lbs.) |
|--------------|-------------|-------------------------|-----------|---------------|
| 6734UB       | 1100        | 12-1/8 x 7-1/4 x 4-1/2  | 6         | 6.9           |
| 6736UB       | 1200        | 12-1/8 x 7-1/4 x 5-1/2  | 6         | 7.8           |
| 6742UB       | 1400        | 14-3/8 x 8 x 7          | 6         | 11.8          |
| 6746UB       | 1700        | 16-3/8 x 8-5/8 x 7      | 4         | 10.2          |
| 6752UB       | 1800        | 17-1/2 x 10-1/4 x 8-1/2 | 4         | 13.7          |
| 6760UB       | 2100        | 19 x 11-1/2 x 10-1/2    | 2         | 10.9          |

All stock boxes are gray color. Minimum order is standard package quantities.

### Ordering Information/Utility Boxes with Lift-Out Trays

| Stock Number | Description | Exterior Dimensions    | Std. Pack | Weight (lbs.) |
|--------------|-------------|------------------------|-----------|---------------|
| 6744HS       | 14800-2     | 14-1/2 x 7-1/4 x 5-3/4 | 6         | 12.0          |
| 6748HS       | 17800-2     | 16-5/8 x 8-3/4 x 7-1/8 | 4         | 14.0          |
| 6757HS       | 19800-2     | 20-1/4 x 8-7/8 x 8-3/8 | 4         | 18.0          |
| 6759HS       | 23800-2     | 23 x 10-1/2 x 11-3/8   | 2         | 14.0          |
| 6754TC       | 27800-2     | 27-1/2 x 13-3/4 x 14   | 2         | 22.0          |

**In-Stock Products for Immediate Shipment**

## Textured Living Hinge Boxes

Flambeau's line of full-length textured living hinge (often referred to as Integral Hinge) boxes are ideal for storing and protecting. These boxes offer an excellent value for your money. Features include a snap-lock lid for a tight, even closure and a smooth label area for imprinting or branding. These boxes are ideal for the autoclave process (sterilization of instruments) where high temperatures will not warp or destroy the box.

### Ordering Information

| Stock Number | Description | Outside Dimensions     | Std. Pack | Weight (lbs.) |
|--------------|-------------|------------------------|-----------|---------------|
| 6650VB       | V301PT      | 7-1/4 x 3-1/2 x 1-1/8  | 36        | 6.0           |
| 6152VB       | V401        | 8-3/8 x 4-1/2 x 1-3/4  | 24        | 8.6           |
| 6160VB       | V501        | 10-3/8 x 4-5/8 x 1-3/4 | 24        | 9.9           |
| 6667VB       | V601        | 14 x 6-1/4 x 2-1/2     | 12        | 11.8          |
| 6172VB       | V701        | 17-1/2 x 7-3/4 x 2-3/8 | 6         | 9.3           |

All stock boxes are color sand. Minimum order is standard package quantities.



**NEW**

## Trademan's Case

The Trademan's Case is loaded with features designed to protect your products while giving you the convenience of mobility.

- Dual sliding, lockable mechanical latches (one or both may be locked).
- Can be nested or stand upright for displays.
- Colors available (lid & base must be the same) - Minimums Apply.
- Stock or custom foam options are available.
- Custom hot stamping available - Minimums Apply.
- Dust seal.

### Ordering Information

| Stock Number | Description                | Dimensions      | Pk. per carton | Weight  |
|--------------|----------------------------|-----------------|----------------|---------|
| 6780TC       | 14" Trademan's Case        | 14 x 11 x 3-1/4 | 14             | 10 lbs. |
| 6781TC       | 14" Trademan's Case w/Foam | 14 x 11 x 3-1/4 | 14             | 15 lbs. |
| 6785TC       | 17" Trademan's Case        | 17 x 12 x 4     | 6              | 13 lbs. |

Minimum order is standard pack quantities.



*In-Stock Products for Immediate Shipment***NEW**

## Diamondback™ Crystal Clear Styrene Boxes

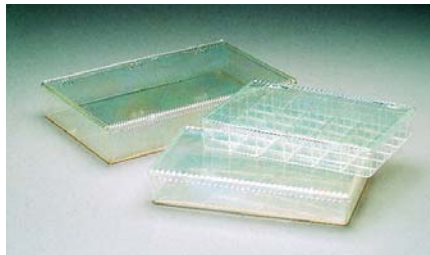
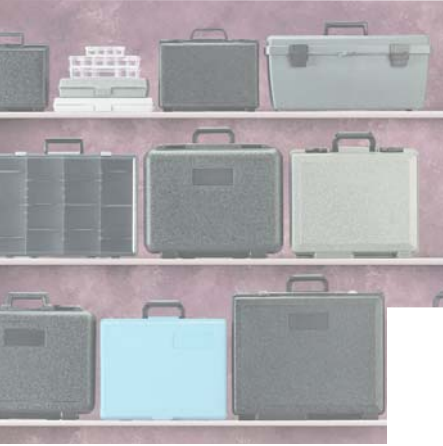
Diamondback™ boxes are designed with a modern contoured style and manufactured from crystal clear styrene for stylish appeal and merchandising of your products. The all new Diamondbacks™ are excellent for use with candy, crafts, beauty aids and can be hot stamped or pad printed with your name or logo.

- Sleek design for improved merchandising.
- Crystal Clear Styrene material, as clear as glass.
- Improved hinge strength and easy open lid.
- Stacking feet for neater displays.
- Applications include: food products, electronic parts, medical & lab supplies, hobby parts, office supplies, precision parts, small screws & washers, beads and art supplies.

### Ordering Information

| Stock Number | Description | Outside Dimensions      | Number of Compartments | Std. Pack | Std. Pack Weight (lbs.) |
|--------------|-------------|-------------------------|------------------------|-----------|-------------------------|
| 6708CD       | DB200       | 8-3/4 x 4-7/8 x 1-3/8   | 18                     | 48        | 21.5                    |
| 6710CD       | DB201       | 8-3/4 x 4-7/8 x 1-3/8   | 12                     | 48        | 21.5                    |
| 6712CD       | DB203       | 8-3/4 x 4-7/8 x 1-3/8   | 6                      | 48        | 18.5                    |
| 6714CD       | DB204       | 8-3/4 x 4-7/8 x 1-3/8   | 12                     | 48        | 21.0                    |
| 6716CD       | DB206       | 8-3/4 x 4-7/8 x 1-3/8   | 1                      | 48        | 21.0                    |
| 6718CD       | DB208       | 8-3/8 x 4-7/8 x 1-3/8   | 12                     | 48        | 21.3                    |
| 6722CD       | DB210       | 7-5/16 x 3-7/8 x 1-5/16 | 9                      | 50        | 15.3                    |
| 6724CD       | DB211       | 7-5/16 x 3-3/8 x 1-5/16 | 6                      | 50        | 12.4                    |
| 6721CD       | DB213       | 7-5/16 x 3-7/8 x 1-5/16 | 10                     | 50        | 15.8                    |
| 6732CD       | DB216       | 7-5/16 x 3-7/8 x 1-5/16 | 1                      | 50        | 12.4                    |
| 6734CD       | DB217       | 7-5/16 x 3-7/8 x 1-5/16 | 7                      | 50        | 15.1                    |
| 6736CD       | DB219       | 7-5/16 x 3-7/8 x 1-5/16 | 12                     | 50        | 12.4                    |
| 6740CD       | DB220       | 4-7/8 x 3-1/4 x 1-1/8   | 6                      | 48        | 5.9                     |
| 6742CD       | DB221       | 4-7/8 x 3-1/4 x 1-1/8   | 4                      | 48        | 5.8                     |
| 6744CD       | DB226       | 4-7/8 x 3-1/4 x 1-1/8   | 1                      | 48        | 5.3                     |
| 6746CD       | DB228       | 4-7/8 x 3-1/4 x 1-1/8   | 8                      | 48        | 6.0                     |
| 6752CD       | DB601       | 11 x 6-3/4 x 1-3/4      | 1                      | 24        | 24.1                    |
| 6758CD       | DB606       | 11 x 6-3/4 x 1-3/4      | 6                      | 24        | 25.6                    |
| 6764CD       | DB613       | 11 x 6-3/4 x 1-3/4      | 13                     | 24        | 27.8                    |
| 6766CD       | DB618       | 11 x 6-3/4 x 1-3/4      | 18                     | 24        | 29.1                    |

Minimum order is standard pack quantities.

***In-Stock Products for Immediate Shipment***

## Heavy-Duty Clear K-Resin<sup>®</sup> Boxes

K-Resin<sup>®</sup> is a tough, sturdy transparent material. Boxes made from K-Resin<sup>®</sup> are ideal for industrial applications where good impact resistance and transparency is needed. Specific applications include storage for fasteners, electronic parts, medical supplies and precision components and parts.

### Ordering Information

| Stock Number | Description | Outside Dimensions    | Number of Compartments | Std. Pack | Std. Pack Weight |
|--------------|-------------|-----------------------|------------------------|-----------|------------------|
| 6616KB       | K206        | 8-1/4 x 4-1/2 x 1-3/8 | 1                      | 24        | 8.0 lbs.         |
| 6644KB       | K226        | 4-5/8 x 3 x 1-1/8     | 1                      | 36        | 5.1 lbs.         |
| 6652KB       | K601        | 11 x 6-3/4 x 1-3/4    | 1                      | 24        | 22.7 lbs.        |
| 6672KB       | K801        | 13-1/8 x 9 x 2-5/16   | 1                      | 12        | 18.9 lbs.        |

Minimum order is standard pack quantities.



## Heavy-Duty Clear Precision Style Boxes

These new boxes from Flambeau are precision-engineered for small specialty items. These boxes feature a brass rust-proof hinge pin and are molded from a sturdy acrylic material. We can also mold these in colors and hot-stamp with your name or logo for custom orders. Foam and vacuum-formed inserts available for stationary storage and product presentation.

### Ordering Information

| Stock Number | Description | Outside Dimensions     | Number of Compartments | Std. Pack | Std. Pack Weight |
|--------------|-------------|------------------------|------------------------|-----------|------------------|
| 6240AA       | 2020-2      | 3-7/8 x 2-3/4 x 1-1/8  | 1                      | 24        | 3.5 lbs.         |
| 6730AA       | 3030-2      | 5-7/8 x 3-7/8 x 1-5/16 | 1                      | 24        | 9.2 lbs.         |
| 6740AA       | 4040-2      | 8-3/8 x 4-1/2 x 1-1/2  | 1                      | 24        | 10.4 lbs.        |

Minimum order is standard pack quantities.

*In-Stock Products for Immediate Shipment*

## Small Satchel-Style Compartmented Cases

Flambeau offers a variety of handsome satchel-style cases molded from tough copolymer resins. These cases include a comfortable handle, double positive latches, pinned hinges and a translucent cover. Customizing is available for certain minimums.

### Ordering Information

| Stock Number | Description | Outside Dimensions      | Number of Compartments | Std. Pack | Std. Pack Weight |
|--------------|-------------|-------------------------|------------------------|-----------|------------------|
| 6771UA       | 711-2       | 15-1/2 x 11-3/4 x 2-1/2 | 1                      | 12        | 26 lbs.          |
| 6770PA       | 724-2       | 15-1/2 x 11-3/4 x 2-1/2 | 9-24                   | 12        | 35 lbs.          |

Minimum order is standard pack quantities.



## Utility Workstation™

Working on projects will be easier utilizing Flambeau's Utility Workstation™. Ideal for toolrooms, MRO areas, temporary storage and for servicing vehicles. This mobile system includes a sliding lid, which can be used as a work surface or removed and conveniently stored on the side of the Workstation. The lid can also be locked to secure items in the top tray. Two large compartmented cases fit in the top tray for organized parts storage. Additional flexibility comes from attachable bins and bulk storage bottom tray, purchased separately. Capacity 300 lbs.

### Ordering Information

| Stock Number | Description          | Dimensions   | Pk. per carton | Weight  |
|--------------|----------------------|--------------|----------------|---------|
| 8510ST       | Utility Workstation™ | 29 x 22 x 40 | 1              | 38 lbs. |

Minimum order is standard pack quantities.