

1760W

TUBE GUITAR AMPLIFIER - OUTPUT TRANSFORMER

- Designed for drop in replacement of original units.
- Constructed to look similar to original factory units (where possible).
- Material used & design specifications were kept as close as possible to the original part to preserve the stock "tone".
- Open style with minimum 9" long primary and secondary leads
- Frequency response 70Hz - 15KHz (0/-1dB reference @ 1KHz)
- Distortion is less than 1% @ 70Hz

ELECTRICAL SPECIFICATIONS

Characteristics		Typical
Input Impedance		2000 Ohms
Output Impedance		4, 8 & 16 Ohms
Output Power		100 W
DCR		
Primary Brown-Red		13.24 Ohm
Primary Red-Blue		14.44 Ohm
Secondary Black-White		0.110 Ohm
Secondary Black-Green		0.175 Ohm
Secondary Black-Yellow		0.279 Ohm
Inductance	Impedance	@ 1.0 kHz, 1.0 V OC
Primary Brown-Blue	4.55 H	30.4 KOhm
Secondary Black-White	11.46 mH	221.4 Ohm
Secondary Black-Green	23.64 mH	421.5 Ohm
Secondary Black-Yellow	49.44 mH	786.2 Ohm
Leakage Inductance		
Primary Brown-Blue		@ 1.0 kHz, 1.0 V SC 1.280 mH
Dielectric Strength		
Temperature Range		2000VRMS -40 to 105 degC

TEST CONDITIONS

Measurement instruments:

D scope series iii audio analyzer

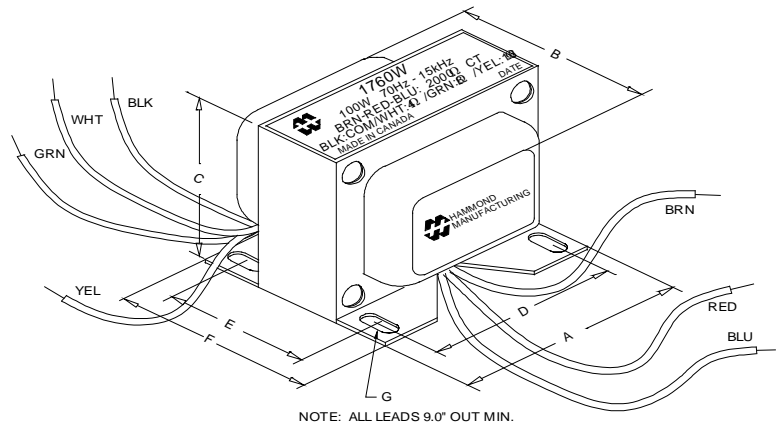
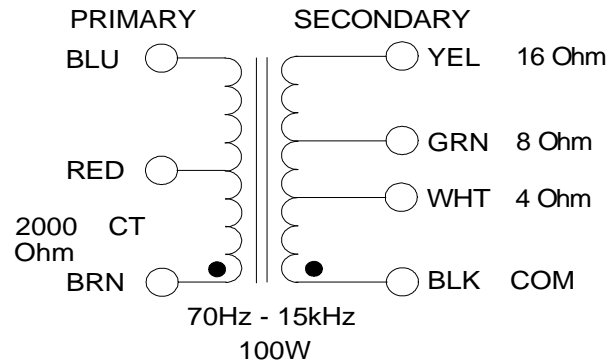
Wayne Kerr 3255B with a 3265B

Keithley 2010 DVM

Hp4192a impedance analyzer

* All graphs input level 27dBu @1.0KHz reference.

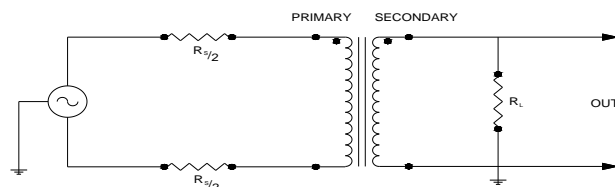
**The results are typical and are subject to normal manufacturing and electrical tolerances.



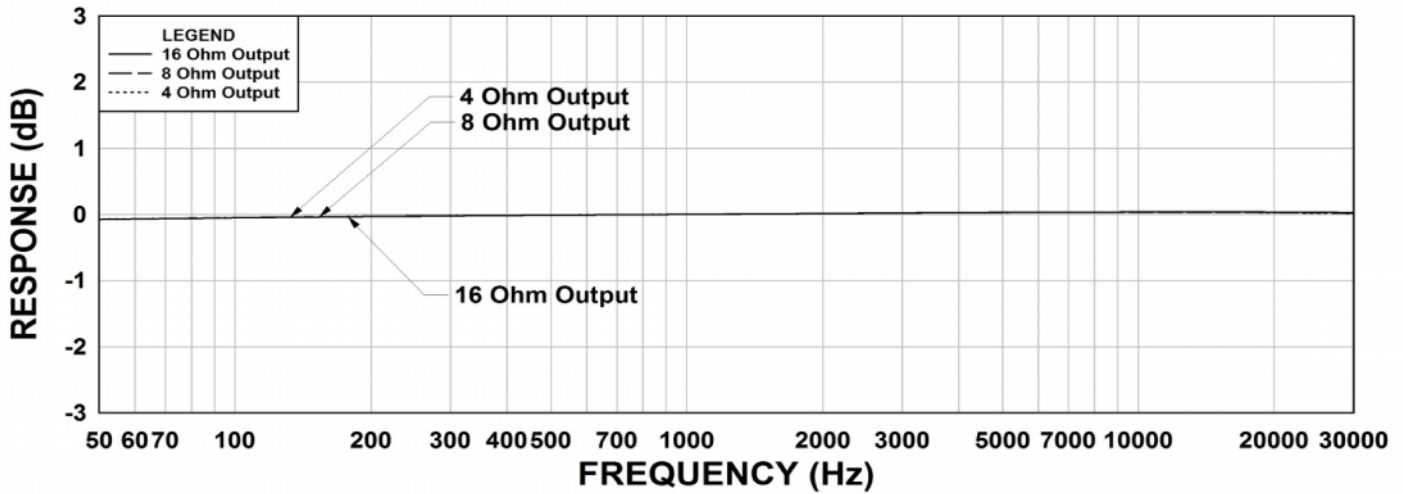
Dimensions

A	4.063" ±0.063	E	2.250" ±0.063
B	3.465" ±0.125	F	2.790" ±0.063
C	3.500" ±0.063	G	0.187" X 0.300"
D	3.500" ±0.063		±0.015

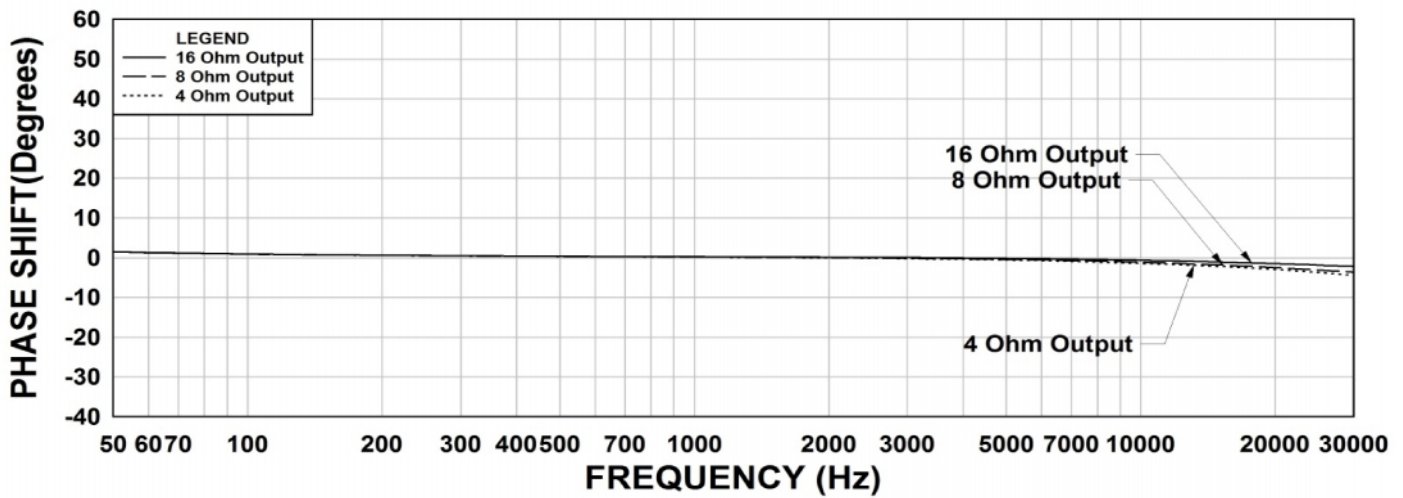
TYPICAL TEST CIRCUIT



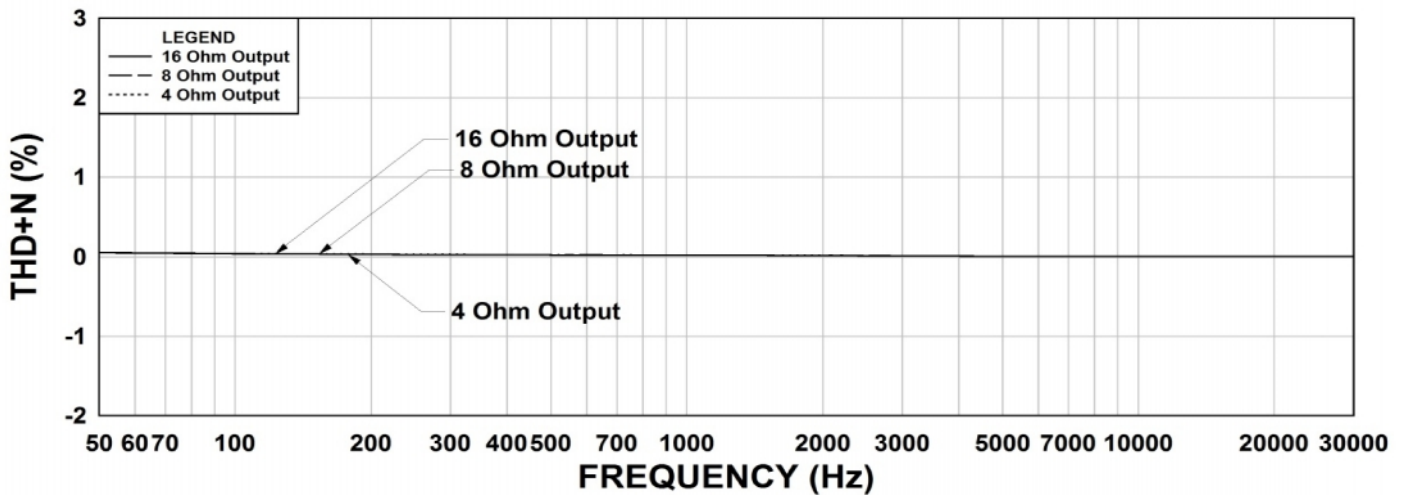
1760W Frequency Response RS = 2K Ohms



1760W Phase Shift RS = 2K Ohms



1760W THD+N RS = 2K Ohms



This drawing and the information in it is the property of Hammond Manufacturing. It may not be reproduced, transmitted or used in any manner whatsoever without the written permission of Hammond Manufacturing. Data subject to change without notice.