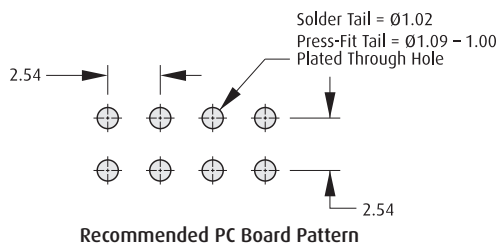
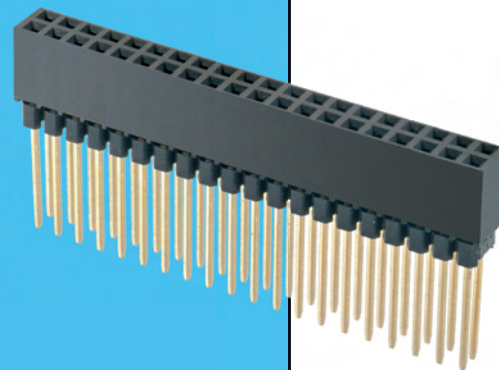


# PC/104 Connectors

A range of bus connectors compatible with the PC/104 industry standard for embedded pc applications, designed for stacking boards with a common bus.

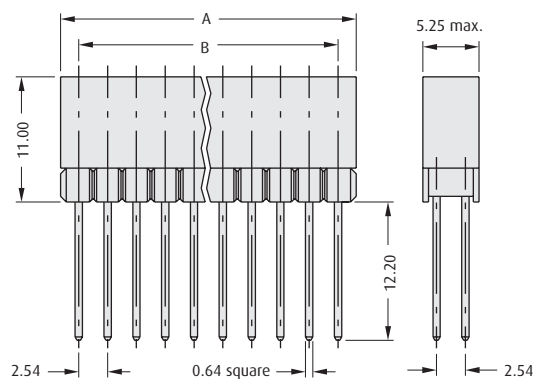
- ❖ 32+32 ways Supports an 8-bit system.
- ❖ 20+20 ways combined with 32+32 ways supports a 16-bit system.



## CALCULATION

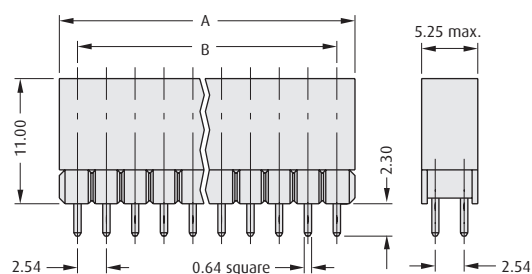
<b>A</b>	$B + 3.56$
<b>B</b>	$2.54 \times (\text{No of ways per row} - 1)$
<b>C</b>	$2.54 \times \text{No of ways per row}$

## STACKTHROUGH CONNECTOR



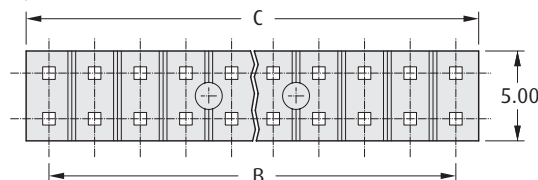
- ❖ Press-Fit connector M20-615 supplied with spacer moulding M20-614

## NON-STACKTHROUGH CONNECTOR



## SPACER Moulding

- ❖ 3.8mm Thick



## HOW TO ORDER

**M20 - 61 X XX XX**

### SERIES CODE

### CONNECTOR TYPE

<b>0</b>	Stackthrough, Solder Tail
<b>1</b>	Non-Stackthrough, Solder Tail
<b>4</b>	Spacer Moulding
<b>5</b>	Stackthrough, Press-Fit Tail
<b>6</b>	Non-Stackthrough, Press-Fit Tail

### FINISH

<b>05</b>	Gold	PO
<b>45</b>	Gold + Hi Temp Mould (M20-610, M20-611)	PO
<b>98</b>	Spacer Moulding	PO

### NO. OF WAYS PER ROW

**20, 32**

All dimensions in mm.

[www.harwin.com](http://www.harwin.com)

