

Customer Information Sheet

DRAWING No.: M80-879XXXX

SHEET 2 OF 2

IF IN DOUBT - ASK

(C)

NOT TO SCALE

THIRD ANGLE PROJECTION

ALL DIMENSIONS IN mm

COMMERCIAL
ORDER CODE:

M80-879XXXX

TOTAL No. OF WAYS
02 - 07, 17, 22

FINISH

05 - GOLD
06 - TIN/LEAD
22 - SELECTIVE GOLD

BRITISH STANDARD

ORDER CODE: TO BS9525 F0033

B5743-1XX-M-T-X

TOTAL No. OF WAYS
02 - 07, 17, 22

FINISH

0 - SELECTIVE GOLD
2 - GOLD

NOTES.

- 2-OFF STRAIN RELIEF STRAP M80-0030006 ARE INCLUDED WITH EACH CONNECTOR.

SPECIFICATIONS:

MATERIAL:

MOULDING - GLASS-FILLED
POLYESTER UL94V-0

CONTACT - PHOSPHOR BRONZE

LATCH - BERYLLIUM COPPER

FINISH:

CONTACTS:

05 - 0.75µ GOLD
06 - 3.0µ 90/10 TIN/LEAD
22 - 0.75µ GOLD ON CONTACT AREA,
3.0µ 90/10 TIN/LEAD ON TAILS

LATCH - 1.25µ NICKEL

MECHANICAL:

DURABILITY - 500 OPERATIONS

PACKING:

TUBE

FOR COMPLETE SPECIFICATION, SEE COMPONENT SPECIFICATION C005XX (LATEST ISSUE)

ELECTRICAL:

CURRENT RATING AT 25°C - 3.0A MAX

CURRENT RATING AT 85°C - 2.2A MAX

WORKING VOLTAGE - 120V AC/DC

VOLTAGE PROOF - 360V AC/DC

CONTACT RESISTANCE (INITIAL) -

20 MILLIOHMS MAX

CONTACT RESISTANCE (AFTER

CONDITIONING) - 25 MILLIOHMS MAX

INSULATION RESISTANCE (INITIAL) -

1000 MEGOHMS MIN

INSULATION RESISTANCE (AFTER

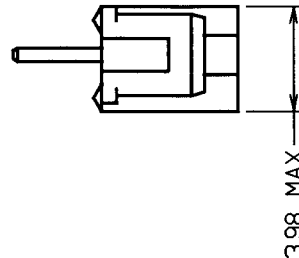
CONDITIONING) - 100 MEGOHMS MIN

ENVIRONMENTAL:

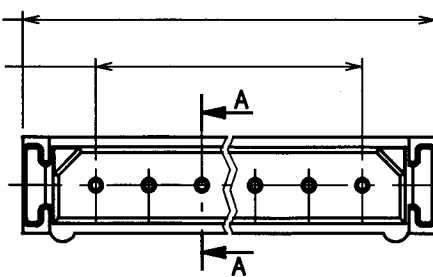
TEMPERATURE RANGE - -55°C TO +125°C

2.00 x No. OF ROWS + 3.50 MAX

2.00 x No. OF PITCHES

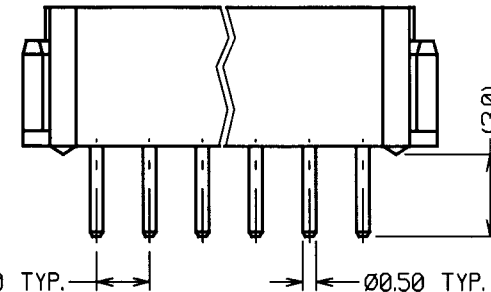


3.98 MAX



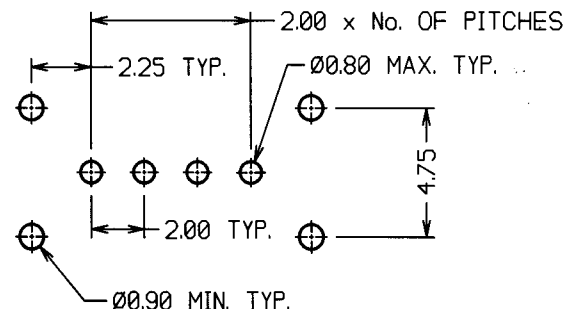
5.56 MAX

SECTION A-A



2.00 TYP.

Ø0.50 TYP.



2.00 x No. OF PITCHES

2.25 TYP.

Ø0.80 MAX. TYP.

2.00 TYP.

4.75

Ø0.90 MIN. TYP.

STRAIN RELIEF STRAP HOLES (OPTIONAL)

RECOMMENDED PCB LAYOUT

10 06.11.98 4630

ISS. DATE C/N

APPROVED: *[Signature]*

CHECKED: *[Signature]*

DRAWN: W. J. BOURNE

CUSTOMER REF.

ASSEMBLY DRG:

HARWIN

HARWIN INC

U.S.A.

TEL: (812) 285 0055

FAX: (812) 285 0056

HARWIN PLC

U.K.

TEL: 01705 370451

FAX: 01705 314590

HARWIN PTE

SINGAPORE

TEL: 65 7794909

FAX: 65 7793868

TOLERANCES

X. - ±1mm

XX - ±0.25mm

X.XX - ±0.10mm

X.XXX - ±0.01mm

ANGLES - ±1°

UNLESS STATED

MATERIAL:

SEE ABOVE

FINISH: SEE ABOVE

S/AREA: mm²

TITLE: DATAMATE 2mm PITCH
VERTICAL PC TAIL SIL PLUG
ASSEMBLY - UNLATCHED

DRAWING NUMBER:

M80-879XXXX

SHT
2 OF 2