

# Customer Information Sheet

DRAWING No.: S25-501

SHEET 2 OF 2

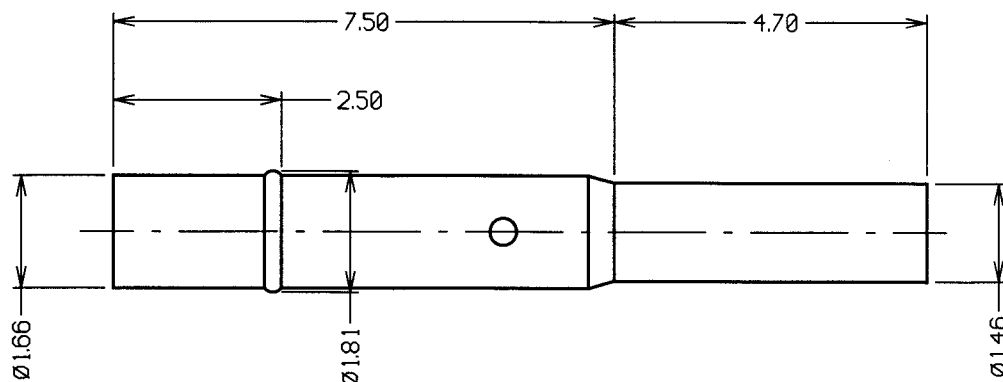
IF IN DOUBT - ASK

©

NOT TO SCALE

THIRD ANGLE PROJECTION

ALL DIMENSIONS IN mm



## NOTES:

1. TO BE USED WITH PROBE P25-4021.
2. SUITABLE FOR A MINIMUM DISTANCE BETWEEN CENTRES OF 2.54mm.
3. SPECIFICATIONS FOR PROBE PERFORMANCE ARE GIVEN ON THE PROBE DRAWING.
4. RECOMMENDED HOLE SIZES:  
 ACRYLIC = Ø1.70mm.  
 BAKELITE = Ø1.75mm.  
 FIBRE REINFORCED PLASTIC = Ø1.75mm.

2 07.03.01 5730

ISS. DATE C/NOTE

APPROVED: *[Signature]*

CHECKED: *[Signature]*

DRAWN: W. J. BOURNE

CUSTOMER REF.:

ASSEMBLY DRG:

# HARWIN

THIS DRAWING AND ANY INFORMATION OR DESCRIPTIVE MATTER SET OUT HEREON ARE CONFIDENTIAL AND COPYRIGHT PROPERTY OF THE HARWIN GROUP AND MUST NOT BE DISCLOSED, LOANED, COPIED OR USED FOR MANUFACTURING, TENDERING OR FOR ANY OTHER PURPOSE WITHOUT THEIR WRITTEN PERMISSION.

## TOLERANCES

X. = ±1mm  
 X.X = ±0.25mm  
 X.XX = ±0.10mm  
 X.XXX = ±0.01mm  
 ANGLES = ±1°  
 UNLESS STATED

## MATERIAL:

BRASS

FINISH: GOLD

S/AREA: mm²

## TITLE:

2.54mm MIN. CENTRE TWO-PIECE  
 SPRING PROBE SLEEVE

DRAWING NUMBER:

S25-501

SHT  
 2 OF  
 2

HARWIN INC

U.S.A.

TEL: (812) 285 0055  
 FAX: (812) 285 0056

HARWIN PLC

U.K.

TEL: 023 9237 0451  
 FAX: 023 9231 4590

HARWIN PTE

SINGAPORE

TEL: 65 7794909  
 FAX: 65 7793868