

Fiberglass Hinged Cover Type 4X Enclosures



Application

Designed for use as a junction box or instrument housing in both indoor and outdoor settings. The enclosure is used in highly corrosive environments typically found in oil refineries, chemical processing plants, waste water treatment, marine installations, pulp and paper processing, and electroplating plants. The efficient design and simple construction create a low-cost, durable, and aesthetic enclosure.

Construction

- Molded fiberglass polyester has outstanding chemical and temperature resistance qualities and exhibits excellent weatherability and physical properties
- Fiberglass is easily punched, drilled, filed, or sawed
- Seamless foam-in-place gasket assures watertight and dust-tight seal
- Polyester mounting brackets and stainless steel attachment screws are provided with each enclosure
- Scratch-resistant GE Lexan Margard® windows are permanently bonded in place
- Molded-in-place threaded brass inserts and plated steel screws are provided for mounting optional panels and terminal block kits
- Removable hinged cover attached to body with Type 316 stainless steel hinge pin

- Screw cover enclosures are secured with two captivated Type 316 stainless steel slotted cross point cover screws
- Enclosures with patented quick-release latches have corrosion-resistant polyester latches located in corners that provide unobstructed access to enclosure
- Hinge pin and bail are corrosion-resistant Type 316 stainless steel
- Knockout padlock provisions included in each latch

Finish/Color

Optional steel panels are white. Optional stainless steel, aluminum, and composite panels are unpainted. Fiberglass material is light gray inside and out.

Industry Standards

UL 508A, 508 File No. E61997: Type 4, Type 4X, Type 12, and Type 13
NEMA/EEMAC Type 4, Type 4X, Type 12, and Type 13
Enclosure flammability rating per UL 508
Window flammability rating per UL 508
CSA File No. LR42186: Type 4, Type 4X, Type 12, and Type 13
IEC 60529, IP66

Accessories

See Chapter 12, General Accessories.

Panels (see table)
Threaded Panel Extenders
Quick-Release Latch Kit
Swing-Out Panel Kit
Terminal Block Kit Assembly
Ventilators

Modification Services Program

You can customize this product to your unique requirements by specifying from these options:

- Colors
- Holes and cutouts in body, doors, subpanels
- Doors
- Subpanels
- Standard accessories

For details, see Modification Services at hoffmanonline.com.

To order, contact your local Hoffman sales representative.

NOTE: For information about modifications outside the scope of the Modification Services program, contact your Hoffman sales representative.

**Standard Sizes Fiberglass Hinged Solid Cover Type 4X Enclosures**

Catalog Number Screw Cover	Catalog Number Quick-Release	Enclosure Size A x B x C	* Panel Catalog Number	Panel Size D x E	Mounting G x H	Overall L x W	F	J	K	O	P	Q	R	T	U
A664CHSCFG	A664CHQRFQ	6.00 x 6.00 x 4.00 (152 x 152 x 102)	A6P6	4.88 x 4.88 (124 x 124)	6.94 x 4.00 (176 x 102)	6.50 x 6.50 (165 x 165)	3.45 (88)	3.25 (83)	1.00 (25)	4.25 (108)	4.25 (108)	5.64 (143)	5.12 (130)	0.12 (3)	5.64 (143)
A864CHSCFG	A864CHQRFQ	8.00 x 6.00 x 4.00 (203 x 152 x 102)	A8P6	6.75 x 4.88 (171 x 124)	8.94 x 4.00 (227 x 102)	8.50 x 6.50 (216 x 165)	3.45 (88)	3.25 (83)	1.00 (25)	4.25 (108)	6.25 (159)	7.64 (194)	7.12 (181)	0.12 (3)	5.64 (143)
A1086CHSCFG	A1086CHQRFQ	10.00 x 8.00 x 6.00 (254 x 203 x 152)	A10P8	8.75 x 6.88 (222 x 175)	10.94 x 6.00 (278 x 152)	10.50 x 8.50 (267 x 216)	5.45 (138)	4.94 (125)	1.31 (33)	6.25 (159)	8.25 (210)	9.61 (244)	9.12 (232)	0.12 (3)	7.61 (193)
A12106CHSCFG	A12106CHQRFQ	12.00 x 10.00 x 6.00 (305 x 254 x 152)	A12P10	10.75 x 8.88 (273 x 226)	12.94 x 8.00 (329 x 203)	12.50 x 10.50 (318 x 267)	5.45 (138)	4.69 (119)	1.56 (40)	8.25 (210)	10.25 (260)	11.58 (294)	11.12 (282)	0.12 (3)	9.58 (243)
A14128CHSCFG	A14128CHQRFQ	14.00 x 12.00 x 8.00 (356 x 305 x 203)	A14P12	12.75 x 10.88 (324 x 276)	14.94 x 10.00 (379 x 254)	14.55 x 12.55 (370 x 319)	7.45 (189)	6.50 (165)	1.81 (46)	10.25 (260)	12.25 (311)	13.59 (345)	13.12 (333)	0.15 (4)	11.59 (294)
A16148CHSCFG	A16148CHQRFQ	16.00 x 14.00 x 8.00 (406 x 356 x 203)	A16P14	14.75 x 12.88 (375 x 327)	16.94 x 12.00 (430 x 305)	16.55 x 14.55 (420 x 370)	7.45 (189)	6.23 (158)	2.08 (53)	12.25 (311)	14.25 (362)	15.56 (395)	15.12 (384)	0.15 (4)	13.56 (344)
A181610CHSCFG	A181610CHQRFQ	18.00 x 16.00 x 10.00 (457 x 406 x 254)	A18P16	16.75 x 14.88 (425 x 378)	18.94 x 14.00 (481 x 356)	18.58 x 16.58 (472 x 421)	9.45 (240)	7.66 (195)	2.66 (68)	14.25 (362)	16.25 (413)	17.53 (445)	17.12 (435)	0.16 (4)	15.53 (394)

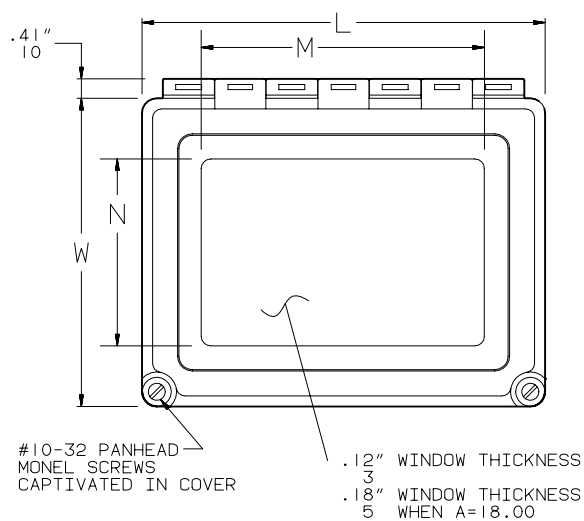
Standard Sizes Fiberglass Hinged Window Cover Type 4X Enclosures

Catalog Number Screw Cover	Catalog Number Quick-Release	Enclosure Size A x B x C	* Panel Catalog Number	Panel Size D x E	Mounting G x H	Overall L x W	F	J	K	M	N	O	P	Q	R	T	U
A664CHSCFGW	A664CHQRFQW	6.00 x 6.00 x 4.00 (152 x 152 x 102)	A6P6	4.88 x 4.88 (124 x 124)	6.94 x 4.00 (176 x 102)	6.50 x 6.50 (165 x 165)	3.45 (88)	3.25 (83)	1.00 (25)	4.25 (108)	4.25 (108)	4.25 (108)	4.25 (108)	5.64 (143)	5.12 (130)	0.12 (3)	5.64 (143)
A864CHSCFGW	A864CHQRFQW	8.00 x 6.00 x 4.00 (203 x 152 x 102)	A8P6	6.75 x 4.88 (171 x 124)	8.94 x 4.00 (227 x 102)	8.50 x 6.50 (216 x 165)	3.45 (88)	3.25 (83)	1.00 (25)	6.25 (159)	4.25 (108)	4.25 (108)	6.25 (159)	7.64 (194)	7.12 (181)	0.12 (3)	5.64 (143)
A1086CHSCFGW	A1086CHQRFQW	10.00 x 8.00 x 6.00 (254 x 203 x 152)	A10P8	8.75 x 6.88 (222 x 175)	10.94 x 6.00 (278 x 152)	10.50 x 8.50 (267 x 216)	5.45 (138)	4.94 (125)	1.31 (33)	8.25 (210)	6.25 (159)	6.25 (159)	8.25 (210)	9.61 (244)	9.12 (232)	0.12 (3)	7.61 (193)
A12106CHSCFGW	A12106CHQRFQW	12.00 x 10.00 x 6.00 (305 x 254 x 152)	A12P10	10.75 x 8.88 (273 x 226)	12.94 x 8.00 (329 x 203)	12.50 x 10.50 (318 x 267)	5.45 (138)	4.69 (119)	1.56 (40)	10.25 (260)	8.25 (210)	8.25 (210)	10.25 (260)	11.58 (294)	11.12 (282)	0.12 (3)	9.58 (243)
A14128CHSCFGW	A14128CHQRFQW	14.00 x 12.00 x 8.00 (356 x 305 x 203)	A14P12	12.75 x 10.88 (324 x 276)	14.94 x 10.00 (379 x 254)	14.55 x 12.55 (370 x 319)	7.45 (189)	6.50 (165)	1.81 (46)	12.25 (311)	10.25 (260)	10.25 (260)	12.25 (311)	13.59 (345)	13.12 (333)	0.15 (4)	11.59 (294)
A16148CHSCFGW	A16148CHQRFQW	16.00 x 14.00 x 8.00 (406 x 356 x 203)	A16P14	14.75 x 12.88 (375 x 327)	16.94 x 12.00 (430 x 305)	16.55 x 14.55 (420 x 370)	7.45 (189)	6.23 (158)	2.08 (53)	14.25 (362)	12.25 (311)	12.25 (311)	14.25 (362)	15.56 (395)	15.12 (384)	0.15 (4)	13.56 (344)
A181610CHSCFGW	A181610CHQRFQW	18.00 x 16.00 x 10.00 (457 x 406 x 254)	A18P16	16.75 x 14.88 (425 x 378)	18.94 x 14.00 (481 x 356)	18.58 x 16.58 (472 x 421)	9.45 (240)	7.66 (195)	2.66 (68)	16.25 (413)	14.25 (362)	14.25 (362)	16.25 (413)	17.53 (445)	17.12 (435)	0.16 (4)	15.53 (394)

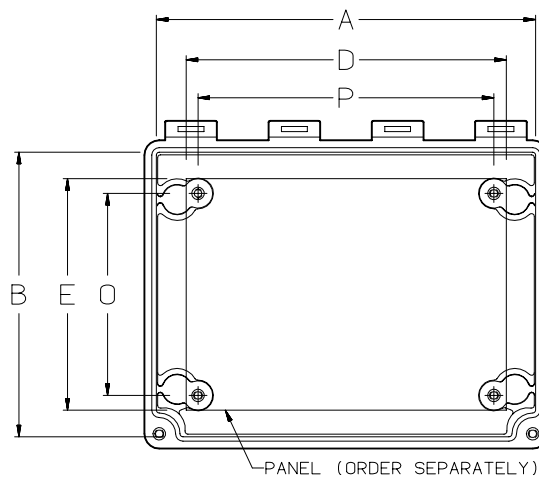
Millimeter dimensions () are for reference only; do not convert metric dimensions to inch.

* Panels must be ordered separately. Optional stainless steel, aluminum, and composite material panels are also available for most sizes. See General Accessories.

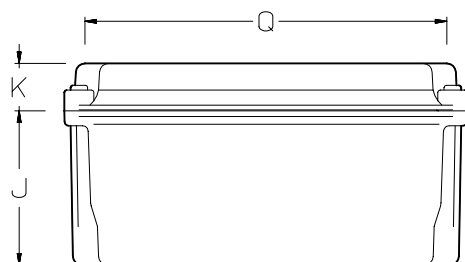
Fiberglass Hinged Cover Type 4X Enclosures



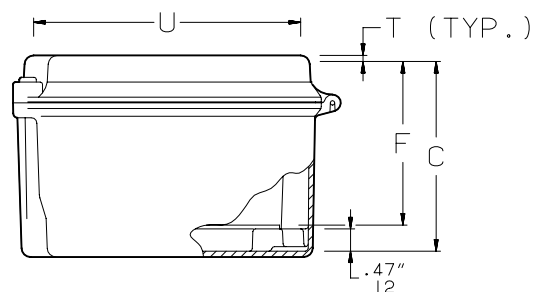
Top View



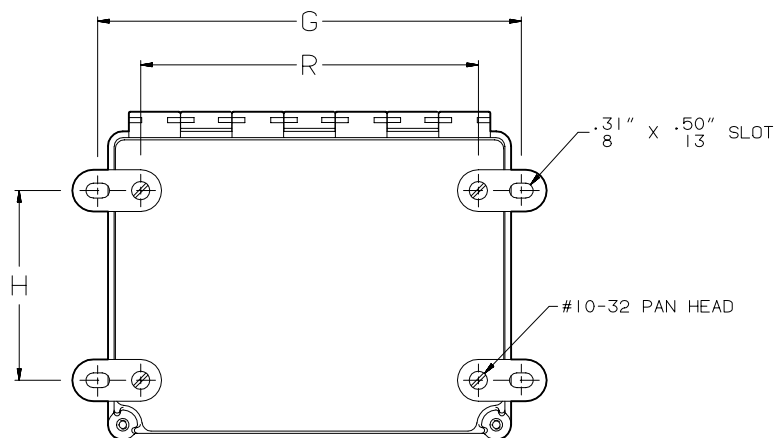
Top View with Cover Removed



Side View

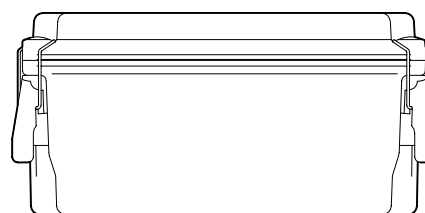


End View



Bottom View

- NOTES: 1. Panel screws are #10-32 pan head.
2. Mounting brackets are .16 in. (4mm) thick.



Side View
Quick-Release Cover Enclosure

C2567

Accessories Fiberglass Hinged Cover Type 4X Enclosures**Threaded Panel Extenders**

are made of zinc-plated steel and designed to raise the panel mounting surface. Extenders attach to threaded internal pads. Male and female thread size is #10. Each kit contains 4 extenders.

Catalog Number	Length
APE050	0.50 (13)
APE100	1.00 (25)

Millimeter dimensions in (); do not convert metric dimensions to inch.

**Quick-Release Latch Kit**

Two fiberglass reinforced gray polyester latches with monel bail and screw hole plugs are included in each package. Supplied as standard with Bulletin A48 quick-release enclosures, this kit will convert Bulletin A48 screw cover enclosures to quick-release without modification. No tools needed to install. Padlocking provision is included.

Catalog Number
AL48

**Swing-Out Panel Kit**

is designed to provide an attractive, yet cost-effective, solution for installing front-mounted panels in Bulletin A48 and Bulletin HJ enclosures. No drilling required.

Catalog Number	Fits Enclosure A x B
A6SPK6C	6.00 x 6.00
A8SPK6C	8.00 x 6.00
A10SPK8C	10.00 x 8.00
A12SPK10C	12.00 x 10.00
A14SPK12C	14.00 x 12.00
A16SPK14C	16.00 x 14.00
A18SPK16C	18.00 x 16.00