

MICRO SWITCH
a Honeywell Division

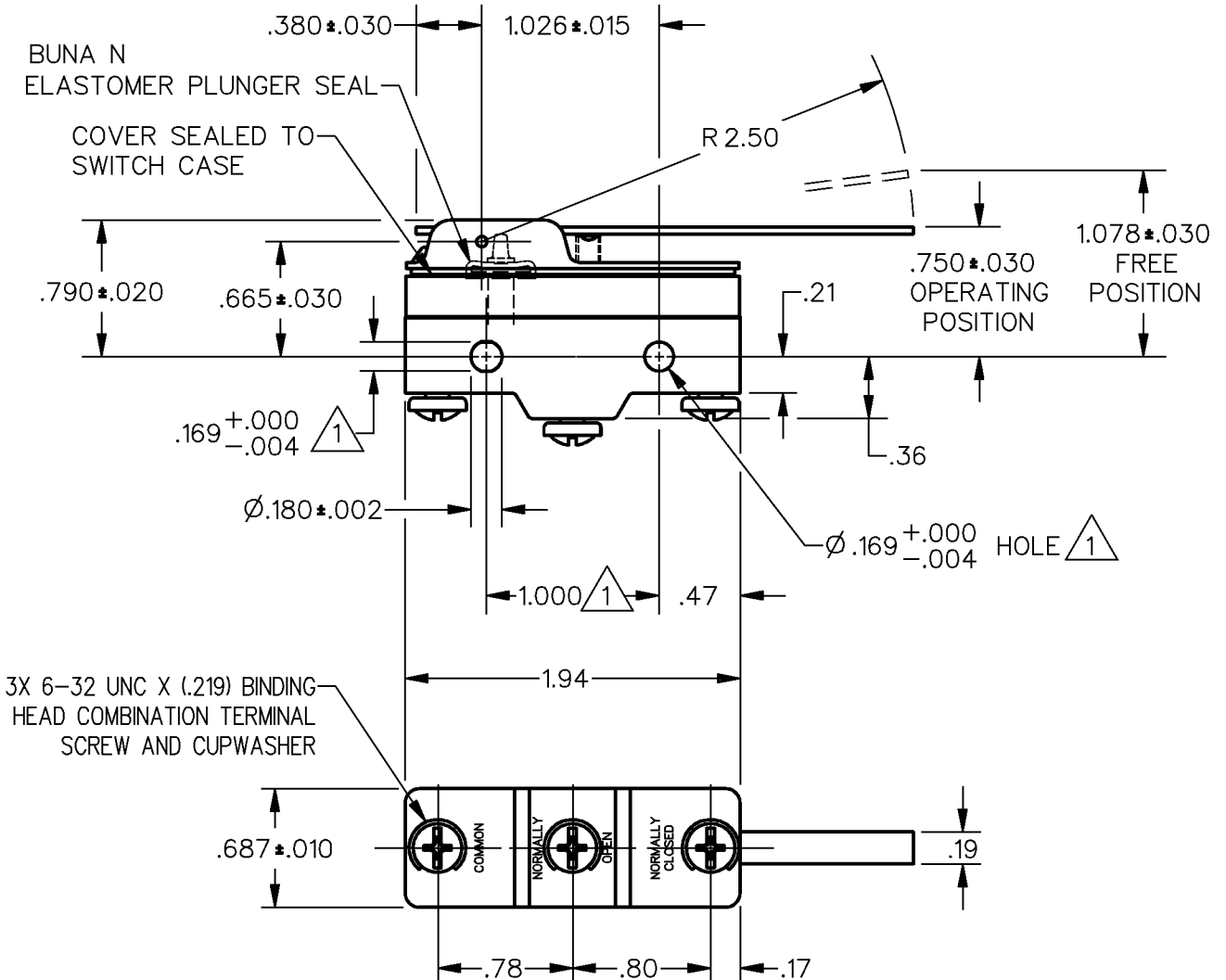
FED.MFG.CODE 91929

SWITCH — BASIC

CATALOG LISTING

BZ-3RW80155551-A2-S

WHEN SEARCHING FOR THIS CATALOG LISTING WITHIN HONEYWELL'S INTERNAL SAP SYSTEM, THE LISTING MUST BE ENTERED WITHOUT DASHES (BZ3RW80155551A2S) DUE TO CHARACTER LIMITATIONS IMPOSED BY THE SYSTEM.



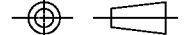
NOTES

- (1) MOUNTING HOLES WILL ACCEPT PINS OR SCREWS OF Ø.165 MAX ON 1.000 ± .002 CENTERS
- 2 — SEALED CONSTRUCTION PROVIDES SPLASH RESISTANCE

ANSI Y14.5M-1982 APPLIES

THIS DRAWING COVERS A PROPRIETARY ITEM AND IS THE PROPERTY OF MICRO SWITCH, A DIVISION OF HONEYWELL. THIS DRAWING IS NOT TO BE COPIED OR USED WITHOUT THE APPROVAL OF MICRO SWITCH.

THIRD ANGLE PROJECTION



CHARACTERISTICS

OPERATING FORCE — — — — 3 OZ MAX
RELEASE FORCE — — — — 1/2 OZ MIN
DIFFERENTIAL TRAVEL — — — .015-.075
OVERTRAVEL — — — — — .219 MIN

ELECTRICAL DATA

CONTACT ARRANGEMENT
S P D T

L9
10A 125, 250 OR 480 VAC
1/2A 125 VDC, 1/4A 250 VDC
L288

SCALE NONE

DO NOT
SCALE PRINT

**UNLESS OTHERWISE SPECIFIED
TOLERANCES ARE**

ONE PLACE (.0) ± .030

TWO PLACE (.00) ± .015

THREE PLACE (.000) ± .005

ANGLES ±

WEIGHT .076 LB



CATALOG LISTING
BZ-3RW80155551-A2-S
PAGE 1 OF 1
ISSUE **M**
3

REVISIONS
A C093346
D L T
14 AUG 98
B 0046794
K N R
11 DEC 08

RELEASE NO. PR-22589 REPLACES

CHECK

CHECK

RS

CHECK

97

12

J J A

RASTER
DRAWN