

## Relialign™ CDI Series

### Commercial Door Interlock Switch



#### DESCRIPTION

Honeywell Relialign™ CDI Series Commercial Door Interlock switches are designed for commercial swing door interlock applications, including elevators, dumbwaiters, and platform lifts. This lift or elevator door interlock holds the door in place and prevents it from being opened when not desired (e.g. the elevator/lift car is not present at the door) by employing solenoid switch circuit technology. A number of design features in the elevator interlock contribute to increase safety, reduce nuisance stoppages and call-backs, and contribute to simplified wiring and installation.

Featuring a custom internal solenoid control, the CDI Series interlock switch can reduce complexity of the host controller, reduce power consumption, extend solenoid life and reduce solenoid “time outs,” reducing customer aggravation. Two

snap-action basic switches are used to indicate door closure, providing an extra level of reliability.

Reliability and smooth operation are also enhanced by the use of a metal key that is less susceptible than a plastic key to bending and breakage. The lack of open or exposed contacts minimizes the possibility of owners making manual adjustments. Finally, the engagement of the key initiates electrical contact.

The snap-action cam mechanism reduces adjustment set-up time and reduces door movement that can cause nuisance shutdown. An RJ-45 Category 5 connector option is available, simplifying installation. This door interlock is configurable and available in left- and right-hand versions, allowing for simplified customization. It is designed to be easy for the OEM to retrofit.

#### FEATURES

- ASME A17.1, ASME A18.1, cULus, and CAN/CSA B44 compliance
- Two separate mechanical actions to indicate door closure
- Long mechanical life of up to one million operations
- Metal key engagement designed to minimize nuisance stoppage with a broad engagement opening
- Door closure retention cam to holds door with minimal key-to-interlock play
- Exceeds commercial pull force standard of 675 pound pull force by 2X
- Internal solenoid control
- No open or exposed contacts
- Manual override for easy actuation without user hazard
- Cat 5 connection available
- Universal voltage for ac and dc applications
- 51,44 mm W x 247,65 mm H x 49,23 mm D [2.025 in W x 9.75 in H x 1.938 in D]

#### APPLICATIONS

- Commercial elevators
- Commercial dumbwaiters
- Commercial platform/vertical lifts

#### BENEFITS

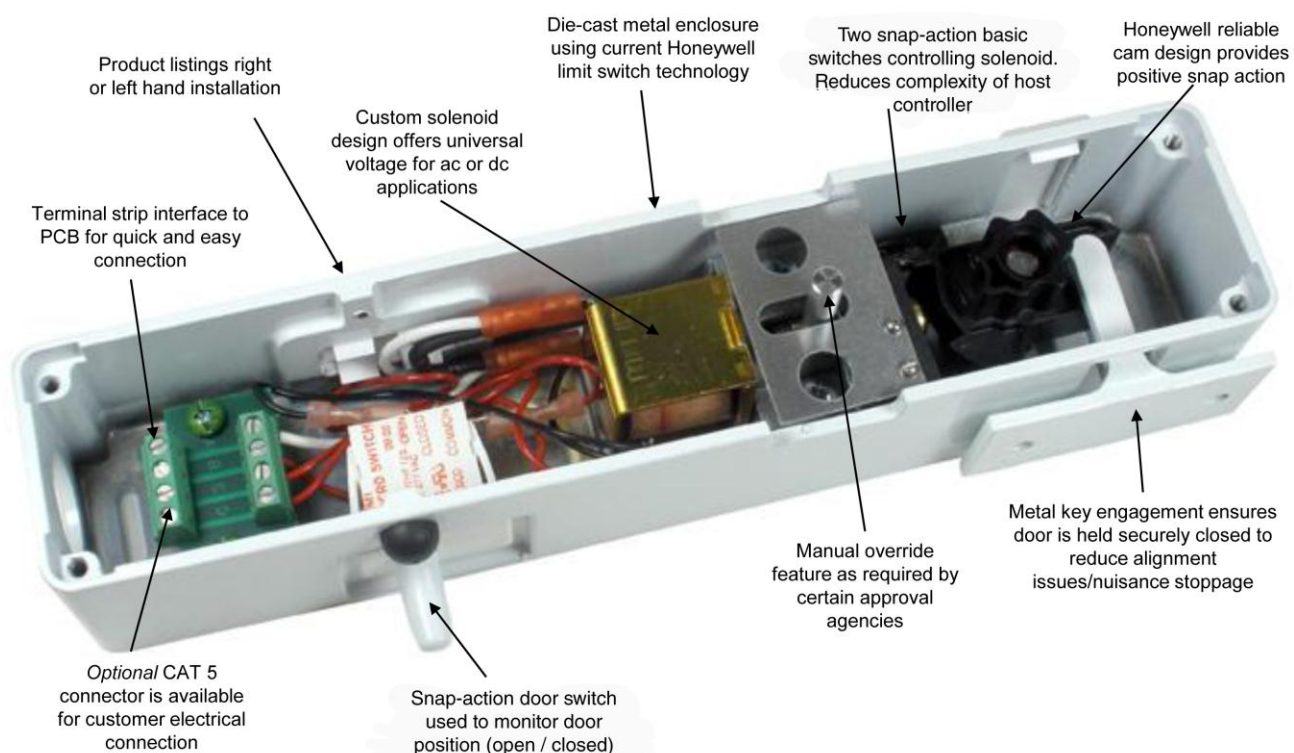
- Meets required safety codes
- Reduces potential for call-backs
- Reliable performance and multiple design features minimize nuisance stoppage
- Simplifies wiring and installation
- Reduces OEM design and manufacturing costs
- Honeywell brand quality

# CDI Series

## PERFORMANCE SPECIFICATIONS

Characteristic	Measure
Endurance life	Up to one million operations
Operating temperature	4 °C to 38 °C [40 °F to 100 °F]
Storage temperature	-40 °C to 60 °C [-40 °F to 140 °F]
Standards/approvals	cULus listed per UL 104 Complies with ANSI/ASME A17.1, A18.1 Complies with CAN/CSA B44
Electrical rating	0.20 A max., 24 Vdc 0.35 A max., 24 Vac, 60 Hz

## DESIGN FEATURES



# Commercial Door Interlock Switches

## PRODUCT NOMENCLATURE

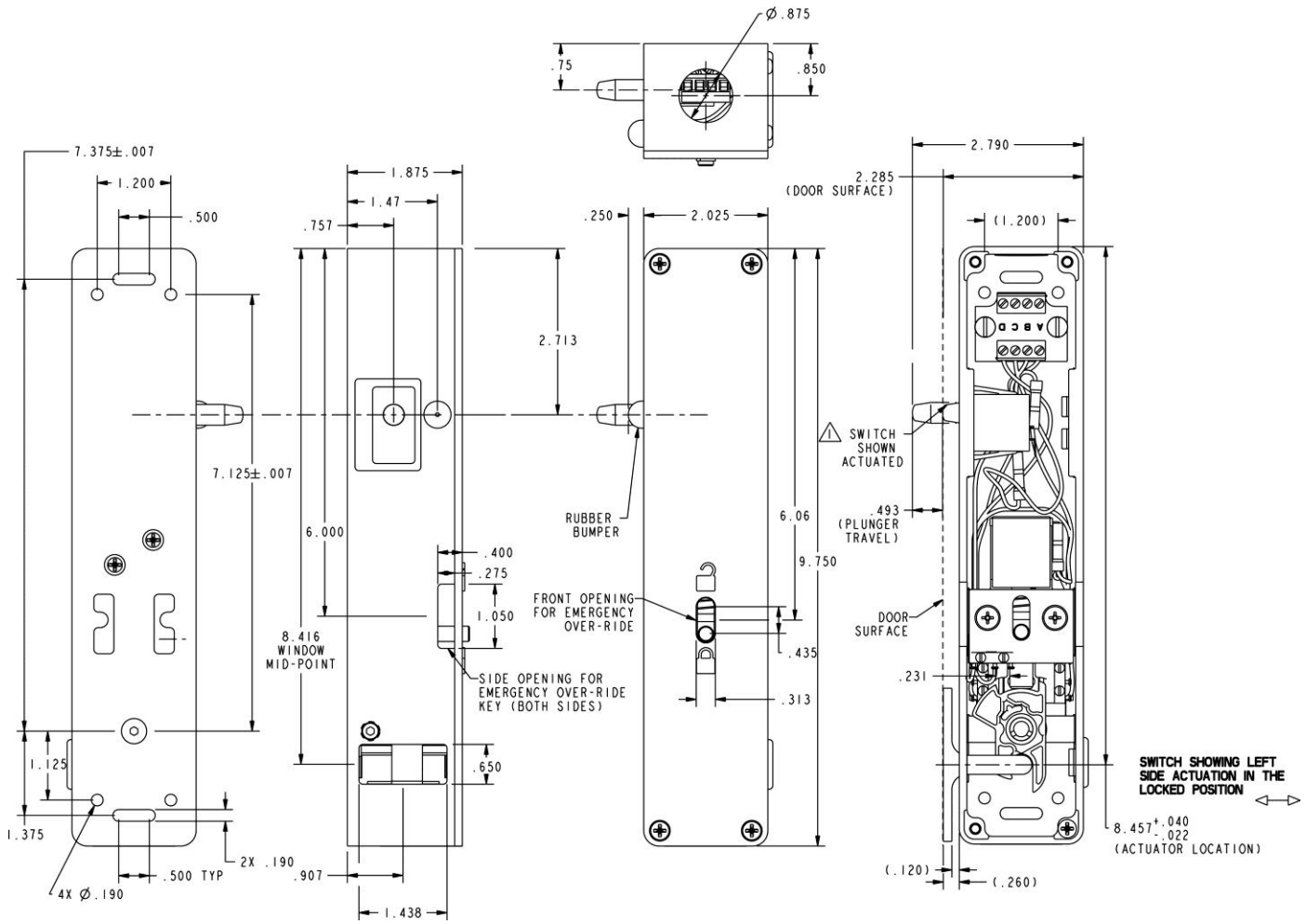
<b>CDI</b>	<b>R</b>	<b>B</b>	<b>S</b>	<b>1</b>	<b>W</b>	
Switch Type	Key Entry Position	Solenoid Type	Wiring	Connector	Color	Specials
<b>CDI</b> Series Relialign™ Commerical Door Interlock	<b>L</b> Left <b>R</b> Right	<b>B</b> ac/dc	<b>P</b> Parallel <b>S</b> Series	<b>1</b> Terminal strip <b>2</b> RJ-45 Category 5 connector <b>3</b> Other <b>4</b> Category 5 - no solenoid switch <b>5</b> Terminal strip - no solenoid switch	<b>W</b> White	Two characters, letters or numbers to signify customer name or other unique features of the product not covered in the nomenclature. This field is not required.

## PRODUCT LISTING

Catalog Listings	Description
<b>CDILBP1W</b>	White CDI Series Commercial Door Interlock, left key entry, ac/dc solenoid, parallel wiring, terminal strip connector
<b>CDIRBP1W</b>	White CDI Series Commercial Door Interlock, right key entry, ac/dc solenoid, parallel wiring, terminal strip connector
<b>CDILBP2W</b>	White CDI Series Commercial Door Interlock, left key entry, ac/dc solenoid, parallel wiring, RJ-45 Category 5 connector
<b>CDIRBP2W</b>	White CDI Series Commercial Door Interlock, right key entry, ac/dc solenoid, parallel wiring, RJ-45 Category 5 connector
<b>CDILBS1W</b>	White CDI Series Commercial Door Interlock, left key entry, ac/dc solenoid, series wiring, terminal strip connector
<b>CDIRBS1W</b>	White CDI Series Commercial Door Interlock, right key entry, ac/dc solenoid, series wiring, terminal strip connector
<b>CDILBS2W</b>	White CDI Series Commercial Door Interlock, left key entry, ac/dc solenoid, series wiring, RJ-45 Category 5 connector
<b>CDIRBS2W</b>	White CDI Series Commercial Door Interlock, right key entry, ac/dc solenoid, series wiring, RJ-45 Category 5 connector

# CDI Series

## DIMENSIONS



## **WARNING**

### **RISK TO LIFE OR PROPERTY**

Never use this product for an application involving serious risk to life or property without ensuring that the system as a whole has been designed to address the risks, and that this product is properly rated and installed for the intended use within the overall system.

**Failure to comply with these instructions could result in death or serious injury.**

### **WARRANTY/REMEDY**

Honeywell warrants goods of its manufacture as being free of defective materials and faulty workmanship. Honeywell's standard product warranty applies unless agreed to otherwise by Honeywell in writing; please refer to your order acknowledgement or consult your local sales office for specific warranty details. If warranted goods are returned to Honeywell during the period of coverage, Honeywell will repair or replace, at its option, without charge those items it finds defective. **The foregoing is buyer's sole remedy and is in lieu of all other warranties, expressed or implied, including those of merchantability and fitness for a particular purpose. In no event shall Honeywell be liable for consequential, special, or indirect damages.**

While we provide application assistance personally, through our literature and the Honeywell web site, it is up to the customer to determine the suitability of the product in the application.

Specifications may change without notice. The information we supply is believed to be accurate and reliable as of this printing. However, we assume no responsibility for its use.

## **WARNING**

### **MISUSE OF DOCUMENTATION**

- The information presented in this product sheet is for reference only. Do not use this document as a product installation guide.
- Complete installation, operation, and maintenance information is provided in the instructions supplied with each product.

**Failure to comply with these instructions could result in death or serious injury.**

### **SALES AND SERVICE**

Honeywell serves its customers through a worldwide network of sales offices, representatives and distributors. For application assistance, current specifications, pricing or name of the nearest Authorized Distributor, contact your local sales office or:

**E-mail:** [info.sc@honeywell.com](mailto:info.sc@honeywell.com)

**Internet:** [sensing.honeywell.com](http://sensing.honeywell.com)

#### **Phone and Fax:**

Asia Pacific	+65 6355-2828
	+65 6445-3033 Fax
Europe	+44 (0) 1698 481481
	+44 (0) 1698 481676 Fax
Latin America	+1-305-805-8188
	+1-305-883-8257 Fax
USA/Canada	+1-800-537-6945
	+1-815-235-6847
	+1-815-235-6545 Fax

Sensing and Control  
Honeywell  
1985 Douglas Drive North  
Golden Valley, MN 55422  
[sensing.honeywell.com](http://sensing.honeywell.com)

# Honeywell