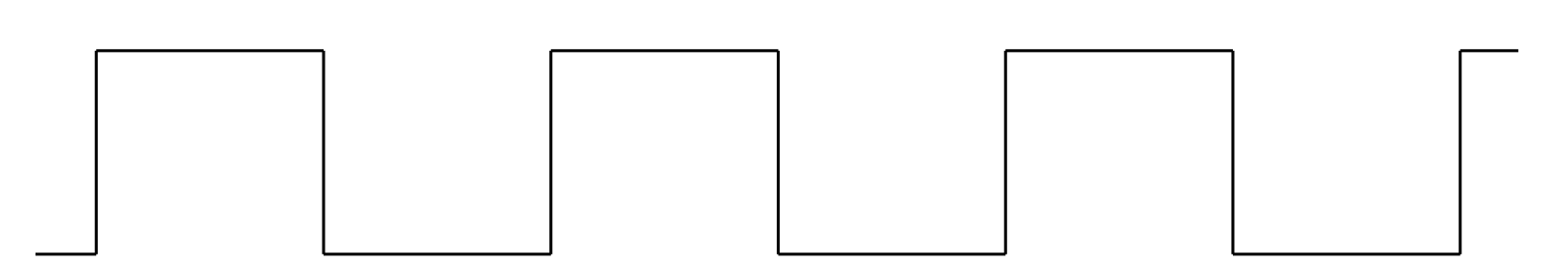
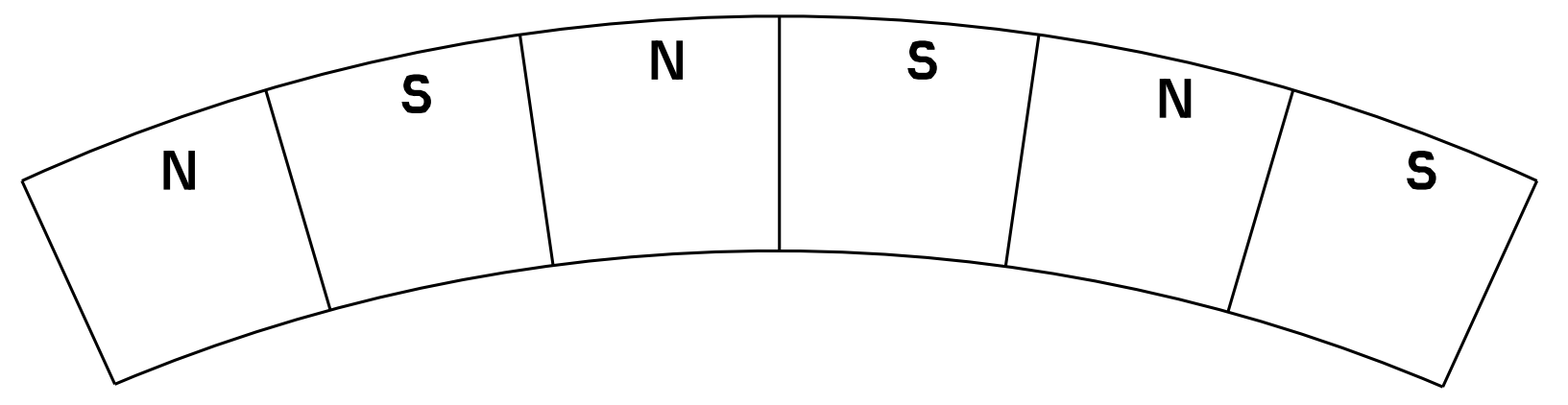
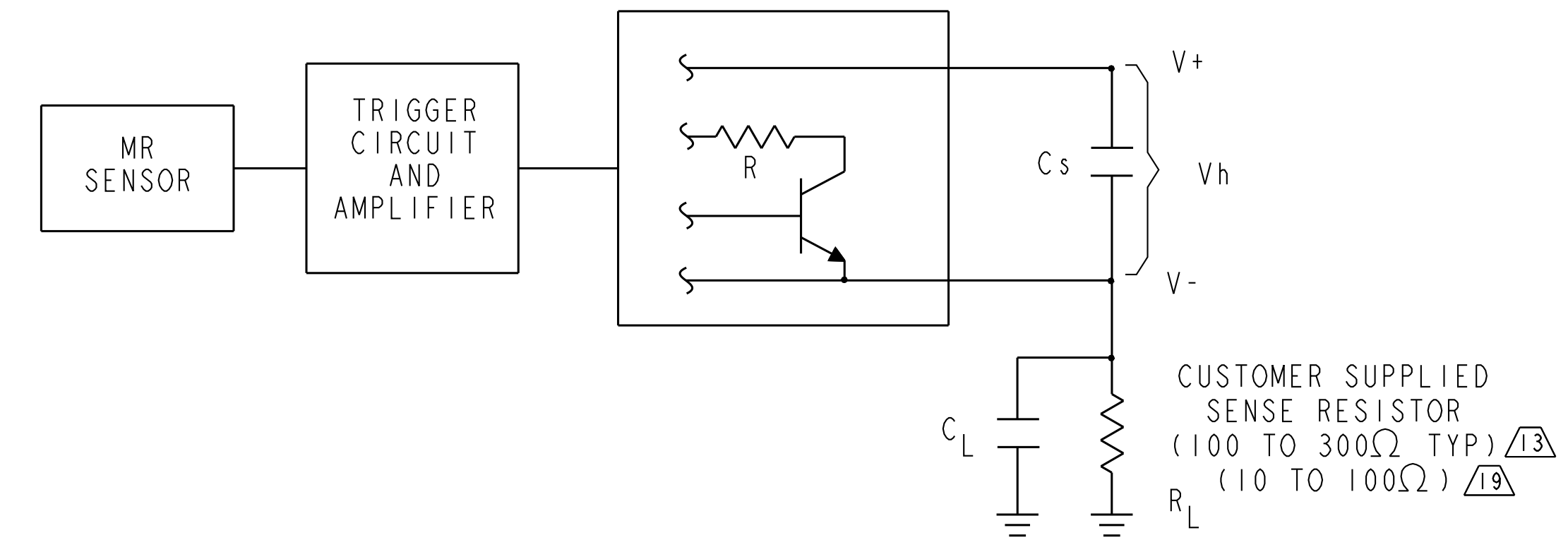


ELECTRICAL SPECIFICATIONS				
	MIN	TYP	MAX	UNITS
V _{cc}				V
V _h (V+ TO V-)	4.5		16	V
I _{cc} OPERATE	11.8	14	16.80	mA
I _{cc} RELEASED	5.9	7	8.40	mA
I _{cc} RATIO (OP/REL)	1.9	2.0	2.3	-
RISE TIME @ 25°C 10% TO 90%		1.5		μS
FALL TIME @ 25°C 90% TO 10%		1.5		μS
OPERATING TEMPERATURE	-40		150	°C
AIR GAP	0.75		2.5	mm
DUTY CYCLE	30	50	70	%

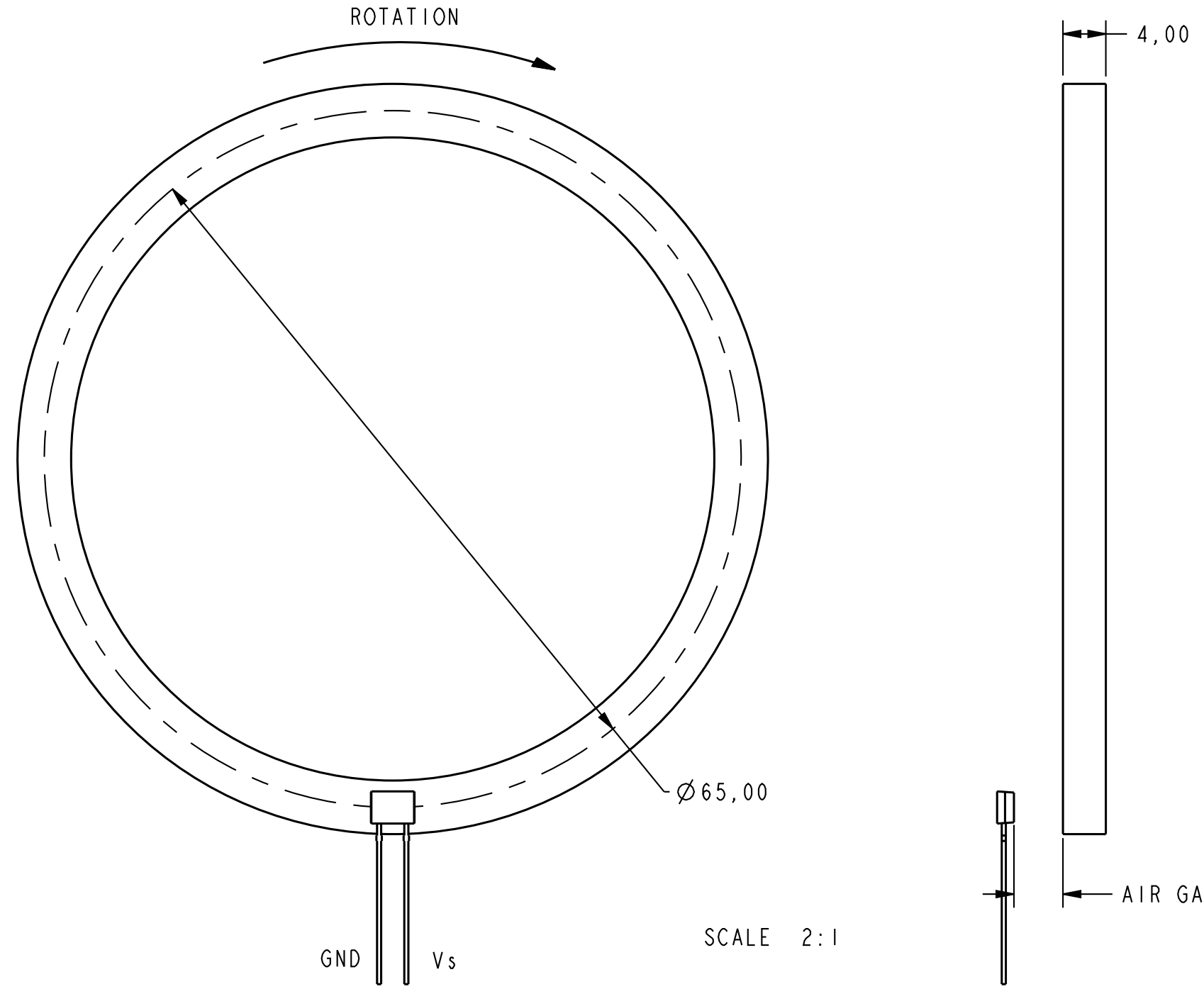
ABSOLUTE LIMITS	
SUPPLY VOLTAGE	-18 TO +18
SUPPLY VOLTAGE	-.5 TO +18
MAGNETIC FLUX GAUSS	NO LIMIT
MAX TEMPERATURE	175°C FOR 10 MINUTES AT 10 CYCLES
MAX FREQUENCY	3000 Hz

CATALOG LISTING	DESCRIPTION	PARTS PER CONTAINER
VF401	STANDARD, BULK PACK	500 / BAG

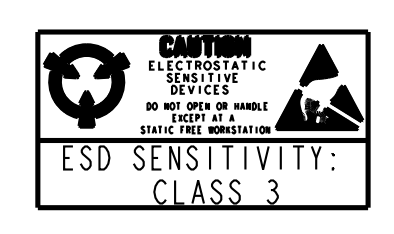
BLOCK DIAGRAM



SENSOR OUTPUT



- NOTES**
- THE ELECTRICAL SPECIFICATIONS WERE ESTABLISHED USING A 65mm DIAMETER, 48 POLE PAIR RING MAGNET
 - INTEGRATED CIRCUIT LOCATION WITH TOLERANCES
 - LEADS MUST BE ADEQUATELY SUPPORTED DURING ANY FORMING/SHEARING OPERATION TO ASSURE THAT THE LEADS ARE NOT STRESSED WITHIN THE PLASTIC
 - PCB WAVE SOLDERING GUIDELINES ARE AS FOLLOWS:
250°C TO 260°C SOLDERING TEMPERATURE, 3 SECONDS MAX SOLDERING TIME
 - BURRS ARE ALLOWED ONLY IF FULL LENGTH OF LEADS WILL PASS THROUGH Ø0.58 HOLE
 - DIMENSION REFERS TO THE LOCATION OF LEAD CENTERLINES AS THEY EXIT THE PLASTIC PACKAGE
 - V_{cc} IS LIMITED BY V_h AND THE VALUE CHOSEN FOR THE SENSE RESISTOR
 - LEAD STRAIGHTNESS MAY BE DETERIORATED ON SOME UNITS BY BULK PACKAGING
 - MOLDED PART DIMENSIONS DO NOT INCLUDE FLASH. FLASH IS LIMITED TO 0.13 MAX
 - ABSOLUTE MAXIMUM RATINGS ARE THE EXTREME LIMITS THE DEVICE WILL MOMENTARILY WITHSTAND WITHOUT DAMAGE TO THE DEVICE. ELECTRICAL AND MAGNETIC CHARACTERISTICS ARE NOT GUARANTEED IF THE RATED VOLTAGE AND/OR CURRENTS ARE EXCEEDED NOR WILL THE DEVICE NECESSARILY OPERATE AT ABSOLUTE MAXIMUM RATINGS
 - TEST CONDITIONS: V_{cc} = 12V, R_L = 150 OHM, C_L = 1000pf
 - SENSOR OPERATION AT LIMITS FOR AIRGAP IS DEPENDENT ON RING MAGNET
 - CUSTOMER SUPPLIED SENSE RESISTOR WITH MIN. VALUE OF 100Ω IS REQUIRED FOR NEGATIVE REVERSE VOLTAGE
 - LEADFRAME IS C155 COPPER ALLOY WITH SOLDER DIPPED PLATING. NICKEL BARRIER BETWEEN COPPER LEADFRAME AND SOLDER DIPPED PLATING DOES NOT EXIST. STORAGE AT ELEVATED TEMPERATURE FOR EXTENDED PERIODS OF TIME MAY AFFECT SOLDERABILITY
 - GATE VESTIGE: APPROXIMATELY .050" BY .008" AND .005" MAXIMUM HEIGHT
 - OPERATE GAUSS LEVELS: DIFFERENTIAL MAGNETIC FIELD OVER ALL OF MR BRIDGE AREA.
OPERATE TYPICAL: +7 GAUSS
RELEASE TYPICAL: -7 GAUSS
 - COVERED BY ONE OR MORE OF THE FOLLOWING U.S. PATENTS, PAT. NO. 6,297,628
 - ROHS COMPLIANT
 - CUSTOMER SUPPLIED SENSE RESISTOR OF LESS THAN 100Ω HAS LIMITED REVERSE VOLTAGE PROTECTION TO -.5V ONLY



UNLESS OTHERWISE SPECIFIED TOLERANCES ARE:		DATE	BY	REV
NO PLACE	X ±.040 ±.1	29MAR01	SAV	1
ONE PLACE	.X ±.030 ±0.4			
TWO PLACE	.XX ±.015 ±0.15			
THREE PLACE	.XXX ±.005 ±			
ANGLES	±			
RAW MATERIAL	COMMERCIAL STANDARD			

THIRD ANGLE PROJECTION	DRAWN	TSM	29MAR01
	CHECK	SAV	29MAR01

THIS DRAWING COVERS A PROPRIETARY ITEM AND IS THE PROPERTY OF HONEYWELL. THIS DRAWING IS NOT TO BE COPIED OR USED WITHOUT THE PERMISSION OF HONEYWELL.			
DIMENSIONS ARE TO BE MET BEFORE PROTECTIVE COATINGS ARE APPLIED	SCALE	DWG TYPE	DRAWING NAME
PTC 3D	5 : 1	I	VF401
ASME Y14.5M-1994	WEIGHT		REV 10
			1 OF 1

Honeywell

SWITCH SOLID STATE

VF401