




[TOP](#) > [DA1R026L91E](#)

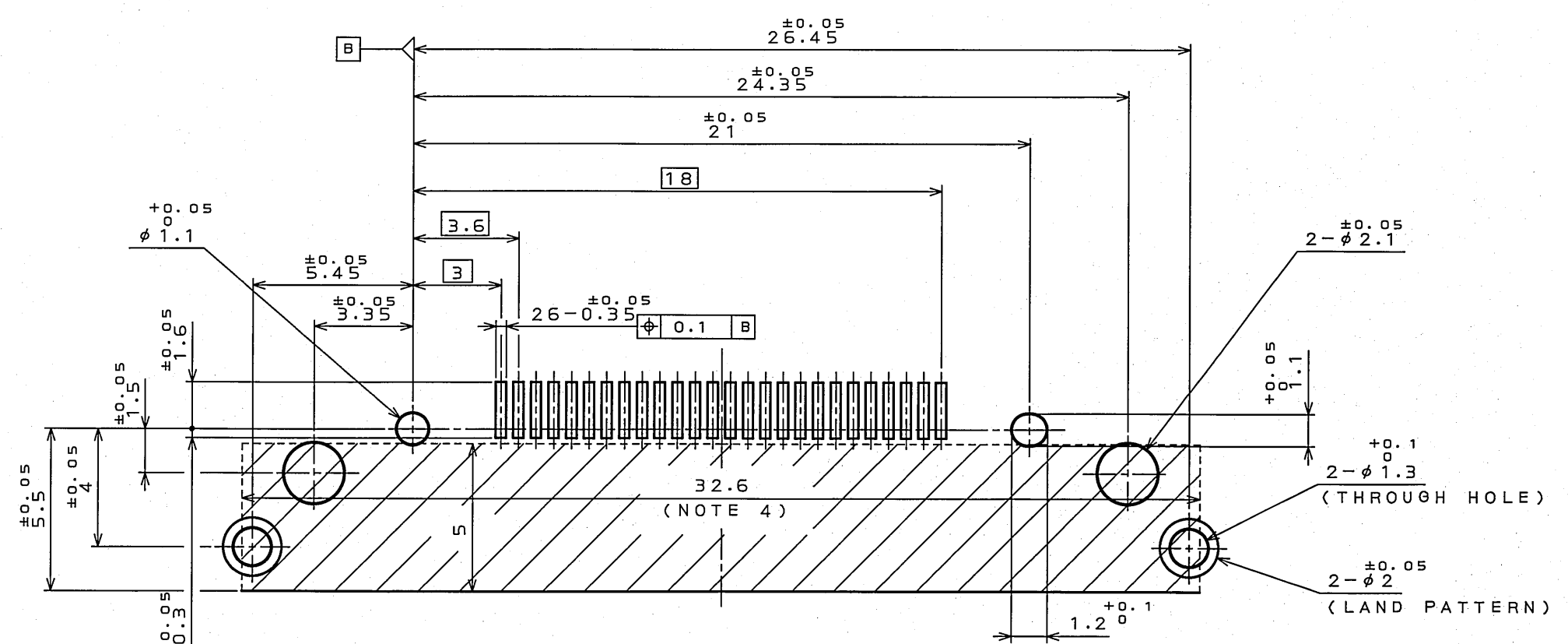
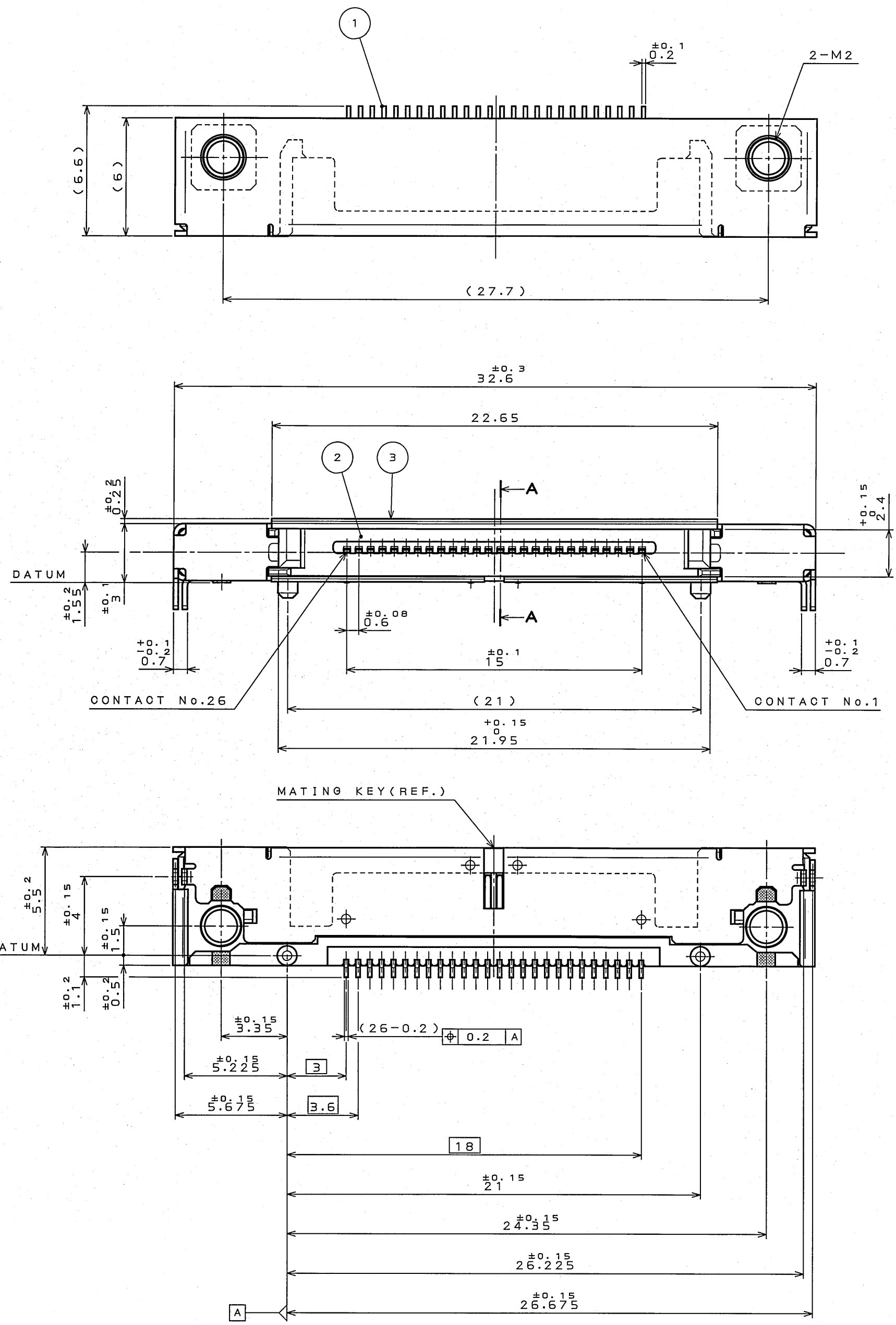
Product List

Product Name	DA1R026L91E
Series Name	DA1 Series
RoHS compliant	Yes
Number of positions	26
Connector type	Receptacle
PCB orientation	Right angle
SMD flag	TRUE
PCB mounting method	Soldering
Wire termination method	
Mount type	
Material of contact	Copper alloy
Finish of contact in contact area	Gold flash over Palladium Nickel over Nickel
Finish of contact in PCB mounting area	Gold flash over Nickel
Finish of contact in terminal area	
Hood	
PCB boardlock feature	Screw
Remarks	
Related Documents	 217Kbytes
Pair	DA1P026M92E

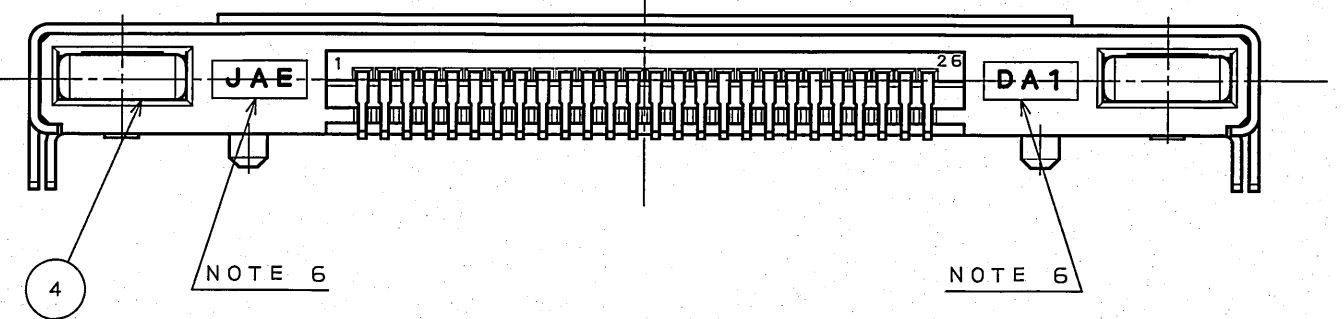
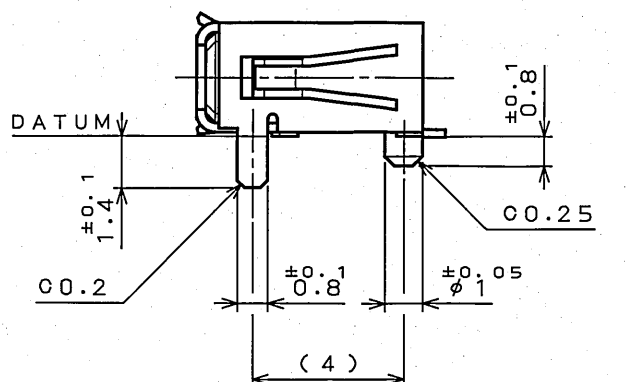
Notice:

1. The values specified in this web site are only for reference. The products and their specifications are subject to change without notice. Contact our sales staff for further information before considering or ordering any of our products.
For purchase, a product specification must be agreed upon.

版数 REV.	年月日 DATE	DON NO.	変更内容 DESCRIPTION	製図 DR.	担当 CHK.	査閲 APPD.	承認 APPD.
2	16.Dec.2004	056414	FINISH CHANGE、OTHERS		Y.TAKAGI	—	<i>[Signature]</i>

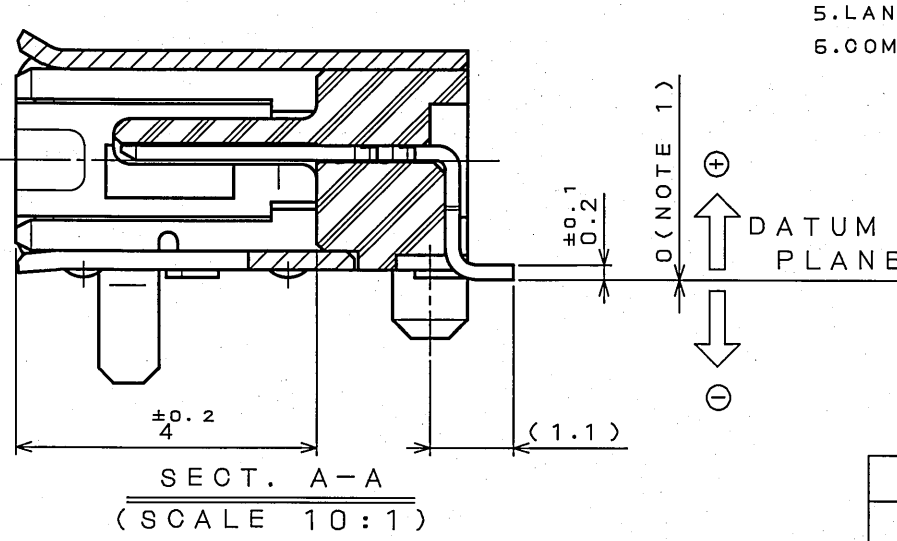


APPLICABLE P.O.B DIMENSION(REF.)(SCALE 5:1)



- NOTE1.⊕ AND ⊖ DENOTE ARE DIRECTION OF SMT TOLERANCE.TERMINAL DIMENSION IS $0^{+0.05}_{-0.1}$, AND DEVIATION (DIMENSION BETWEEN MINUS VALUE & PLUS VALUE) SHALL BE 0.1 MAX.
- △2.THE CONNECTING AREA IS PLATED WITH GOLD FLASH(0.03μmMIN) OVER Pd-NI(0.4μmMIN) OVER NICKEL(1.5μmMIN). THE TERMINAL AREA IS PLATED WITH GOLD FLASH(0.03μmMIN) OVER NICKEL(1.5μmMIN).
- 3.THE SHEARED EDGES OF CONNECTOR SHELL AT THE SOLDER AREA ARE NOT PLATING.
- 4.PLEASE NO PATTERNING IN SLANT AREA.
- 5.LAND MARK BOTH SIDES OF P.O.B. HOLE OF φ1.1 IS THROUGH HOLE PLATED.
- 6.COMPANY LOGO "JAE" AND PART NUMBER "DA1" ARE MARKED AS INDICATED.

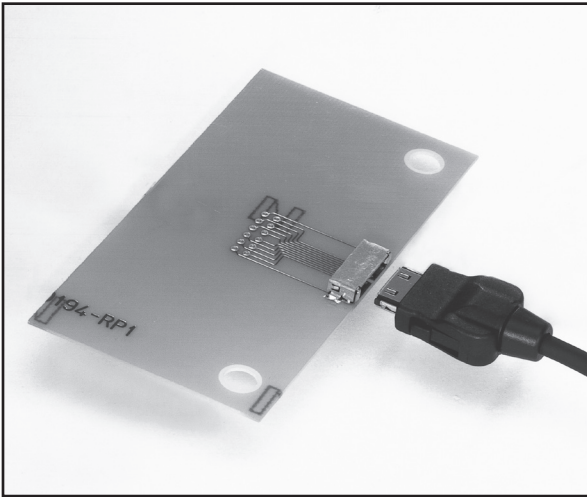
- 注1.SMT公差部のプラス、マイナスの方向を示す。端子寸法は $0^{+0.05}_{-0.1}$ であり公差内におけるバラツキ(1コネクタ内のMAX値とMIN値の差)は、0.1以下とする。
- △2.接触部は、ニッケル(1.5μm以上)上パラジウムニッケル(0.4μm以上)上金フラッシュメッキ(0.03μm以上)結線部は、ニッケル(1.5μm以上)上金フラッシュメッキ(0.03μm以上)である。
- 3.本コネクタシェル半田付部破断面には、メッキは施されません。
- 4.本材料線部内にはパターンを配線しないよう願います。
- 5.ランドは基板の両面に設けること。又、φ1.3の穴はスルーホールメッキであること。
- 6.図示の位置に社標 "JAE" 及び品名 "DA1" を表示する。



4	NUT	2	STEEL	NICKEL PLATING	M2
3	SHELL	1	STAINLESS STEEL	(LEAD FREE)TIN/TIN ALLOY	
2	INSULATOR	1	PPS		UL94 V-0
1	CONTACT	26	COPPER ALLOY	NOTE 2	
符 号 NO.	名 称 DESCRIPTION	個 数 QTY.	材 料 MATERIAL	仕 上 FINISH	備 考 REMARKS
仕様書(SPECIFICATION)	第1版(ORIGINAL DATE)	3.Mar.2003	尺 寸 SIZE	シ リ ー S(E)R(I)E(S)	日本航空電子工業株式会社
JACS-3192	△		5: 1	DA1	JAPAN AVIATION ELECTRONICS INDUSTRY, LTD.
一般公差(GENERAL TOLERANCE)	製図 DR.	E.MURANO	名称(TITLE)	DA1R026L91E	図面番号(DRAWING NO.)
寸法(DIMENSION)	担当 CHK.	Y.TAKAGI	数量(MASS)		SJ038459
・ ±0.8	・ X° ±	・ X°X' ±			
・ XX ±0.1					
・ XXX ±					
	承認 APPD.	Y.KUBOTA			

DA1 SERIES CONNECTORS

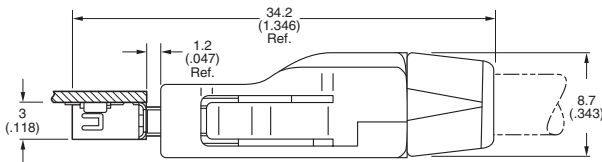
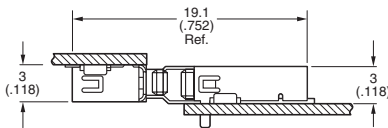
0.60mm (.024") Contact Spacing, PCB-to-Cable Connectors



FEATURES

- Mating height 3.0mm (.012"), mounting space reduced, 0.60mm (.024") pitch single line SMT interface connector
- Metal shell provides shielding against EMI and static electricity
- Side locking system
- Board mounting plug for cradle (catcher) available for 18 contact version
- Receptacles and cradles available in embossed tape for automatic SMT mounting

Connector Profile (Ref.)



.....

DA1 Series connectors are low profile SMT compact interface connectors for use in compact and slim mobile information terminal devices such as PDAs, HPCs, and notebook PCs.

GENERAL SPECIFICATIONS

Number of Contacts	10, 18, and 26
Contact Spacing	0.60mm (.024")
Current Rating	0.5 Amp Signal per contact 1 Amp Power per contact
Dielectric Withstanding Voltage	250 VAC r.m.s. (for one minute)
Insulation Resistance	100 megohms min.
Contact Resistance	50 milliohms max.
Operating Temperature	-25°C to +75°C
Applicable Wire Sizes	AWG #28 max.

MATERIALS AND FINISHES

Description	Materials/Finishes
Insulator	Nylon (UL94V-0, Black)
Pin Contact	Copper Alloy, Gold plating over Lead-Nickel
Lead Contact	Tin-Lead plating
Shell	Steel, Nickel plating

ORDERING INFORMATION

DA1 - ***** - **0**** - ***** - **9** - ***** **E**

Series _____
 Contact Type _____
 R – Receptacle
 P – Plug
 B – Cradle
 No. of Contacts _____
 10, 18 and 26
 Termination _____
 H – Right angle with Hold-down
 (10 and 18 position only)
 L – Right angle without Hold-down
 (26 position only)
 M – Cable Plug
 Contact Finish _____
 9 – Gold plating
 Palladium Nickel
 Modification Code _____
 Consult JAE
 Lead Free Version _____

Dimensions and specifications subject to change without notice.