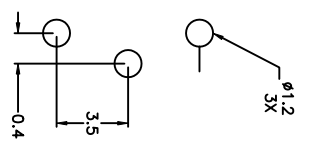
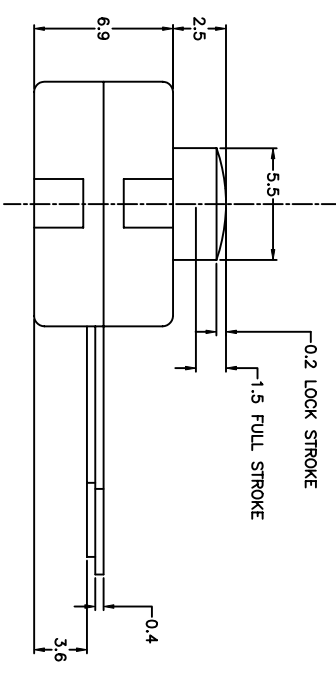
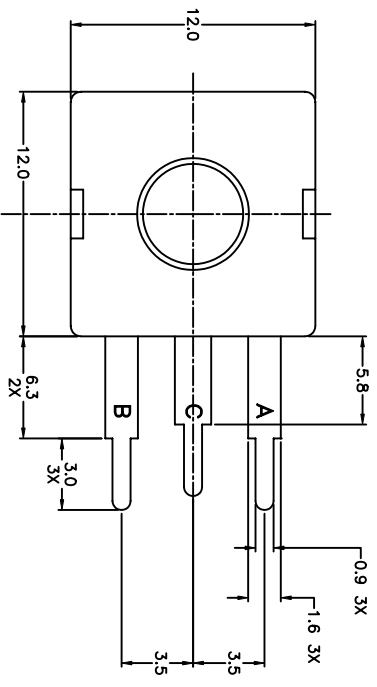
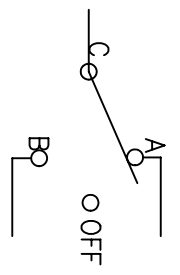
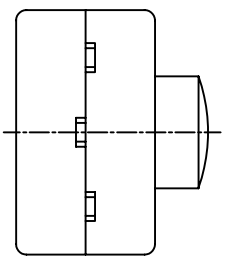


LTR	EN	DESCRIPTION	APPR	BY	DATE
A	-	INITIAL RELEASE	RB	NH	11-10-03



RECOMMENDED MOUNTING PATTERN



SCHEMATIC

JUDCO INVENTORY NO. 50-0063-00
 SWITCH TYPE: SPDT J977-5 (ON A-OFF-ON B)
 CUSTOMER: DIGI KEY

APPROVED BY: _____
 DATE: _____

This document embodies a product, component, and/or design proprietary to JUDCO MANUFACTURING INC., and which is protected either as a trade secret, by U.S. Patent, or by copyright. It may not be used in any way without written express consent of JUDCO MANUFACTURING INC.

DIMENSIONS IN MM TOLERANCES		
.X	±.3	
.XX	±.15	HARBOR CITY CALIFORNIA MINI FLAT PACK J977-5 W/STRAIGHT TERMS
DRAWN: NH	11-10-03	DWG. NO. 1415-503
APPR: KJ	11-10-03	SHEET 1 OF 1
1415US03A.DWG		