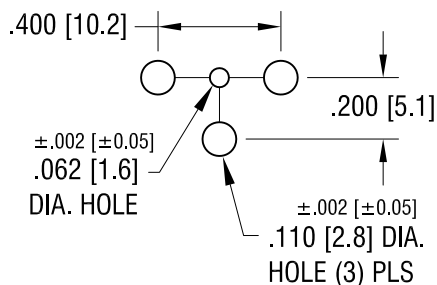
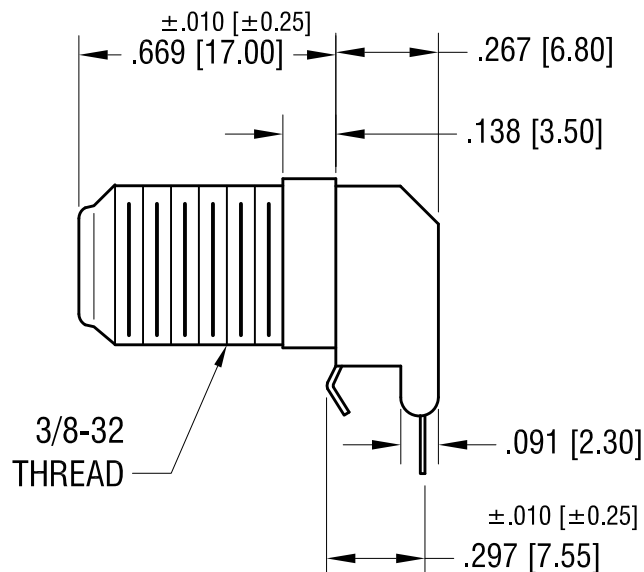
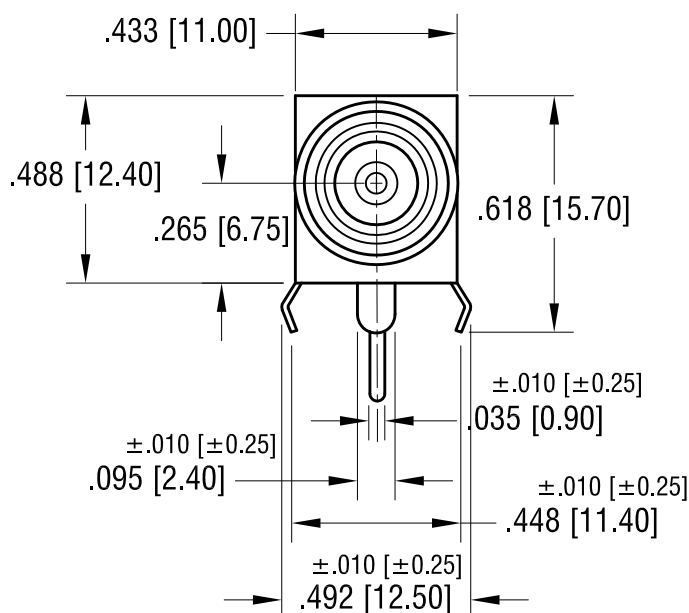
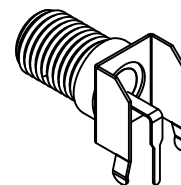


THIS DOCUMENT IS THE PROPERTY OF
KEYSTONE ELECTRONICS CORP. AND
SHALL NOT BE REPRODUCED, DISTRIBUTED
OR USED AS A BASIS FOR MANUFACTURE
WITHOUT PRIOR WRITTEN PERMISSION
FROM KEYSTONE ELECTRONICS CORP.

MOUNTING DETAIL



ACTUAL SIZE



NOTES:

- BRACKET:
MAT'L - STEEL, NICKEL PLATE
- CONTACT:
MAT'L - BRASS, TIN PLATE
- THREADED BODY: 3/8-32 TH'D
MAT'L - BRASS, NICKEL PLATE
- INSULATOR:
MAT'L - POLYPROPELENE

BRACKET WAS TIN PLATED
UPDATE DIMENSION

7.02.18 CHANGE AS PER ECN 18-024

A

REV.

KEYSTONE ELECTRONICS CORP.

www.keyelco.com • NEW HYDE PARK, NY 11040 • Tel (516) 328-7500

PART NAME

RIGHT ANGLE PC 'F' CONNECTOR

MATERIAL

AS NOTED

FINISH

AS NOTED

DRN BY

BOONE

DATE

1.7.97

APP'D

SCALE

2X

TOLERANCES

INCH [MM]

DECIMAL ±.005 [±0.13]

ANGULAR ± 1°

UNLESS OTHERWISE SPECIFIED

CODE

DWG NO.

C

911