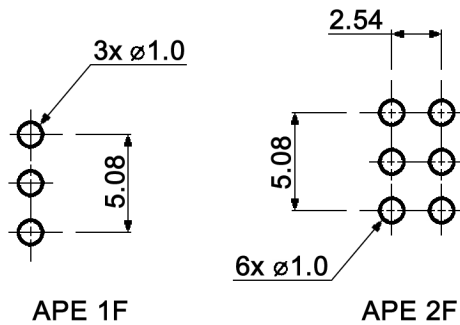
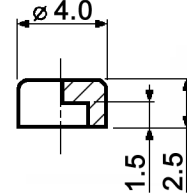


When looking at the marking side, the normally closed contacts are on the right hand side.

P.C. MOUNTING



Caps:



Specifications:

Contact rating: max. 48V AC/DC, 0.4VA / max. 50mA
 min. 20mV AC/DC, 1µA
Contact resistance: 50mOhm max.
Insulation resistance: 500MOhm min. at 250V DC
Dielectric strength: 500V, 50Hz for the duration of 1 minute
Operating temperature: -20°C to +85°C
Mechanical life: min. 60 000 cycles
Operating force: 1.86 +/-1.08N
Soldering conditions: auto-soldering: max.: 260 +/-5°C, 5sec.
Switching function: on - mom
Mouting: on pc-board
Material: Case: PBT, meets UL94V-0, washable
 Metal parts: brass, nickel plated
 Contacts: phosphor bronze, gold plated over nickel barrier
 Terminals: PC terminals, crimped, phosphor bronze,
 gold plated over nickel barrier

black KA 3105
 green KA 3106
 grey KA 3107
 yellow KA 3108
 red KA 3109
 white KA 3110

UL file number: E140532



Tolerances:	Date	Name
		08/09
Modifications	Date	Name

APE 1F / APE 2F

knitter-switch

20 25 57

Page

1/1