

**Product number C10704\_PLATINUM-4-OS**

Family	Platinum	FWHM	13 degrees
Type	Lens array	Efficiency	-
LED	Golden Dragon+	cd/Im	-
Color	Clear	Gerber File	Available
Diameter	50 mm	MR16 applications	
Height	15.2 mm		
Style	Round		
Optic Material	PMMA		
Holder Material	-		
Fastening	Pin, glue		
Status	On production		

**Product number C10703\_PLATINUM-4-OM**

Family	Platinum	FWHM	20 degrees
Type	Lens array	Efficiency	-
LED	Golden Dragon+	cd/Im	-
Color	Clear	Gerber File	Available
Diameter	50 mm	MR16 applications	
Height	15.2 mm		
Style	Round		
Optic Material	PMMA		
Holder Material	-		
Fastening	Pin, glue		
Status	On production		

**NOTE: The typical divergence will be changed by different color, chip size and chip position tolerance. The typical total divergence is the full angle measured where the luminous intensity is half of the peak value.**

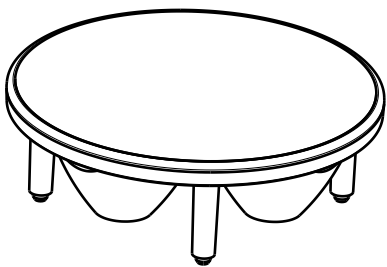
**GENERAL INFORMATION**

- Product series especially designed & optimized for Golden Dragon+ series of LEDs.
- Special care taken to make light distribution as uniform as possible.
- Lens material optical grade PMMA with high UV and temperature resistance. Allows use of high current and temperature conditions.

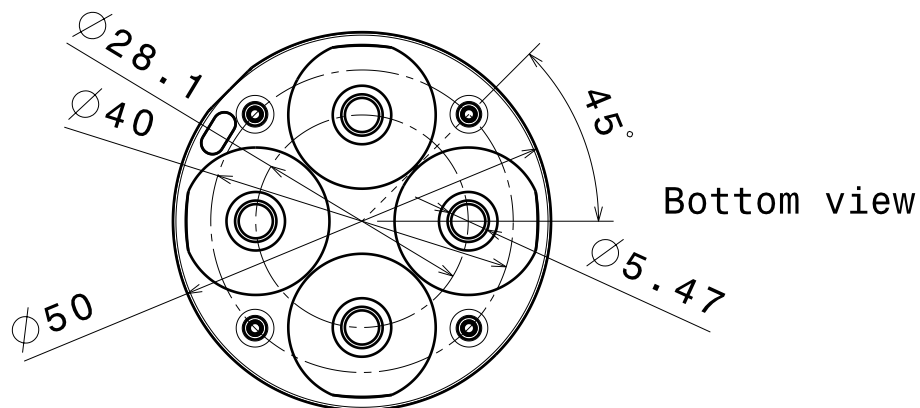
Please find more information about used material from below:

[http://ledil.fi/sites/default/files/Documents/Technical/Material/PMMA%20N%20UL94\\_Yellow%20Card.pdf](http://ledil.fi/sites/default/files/Documents/Technical/Material/PMMA%20N%20UL94_Yellow%20Card.pdf)

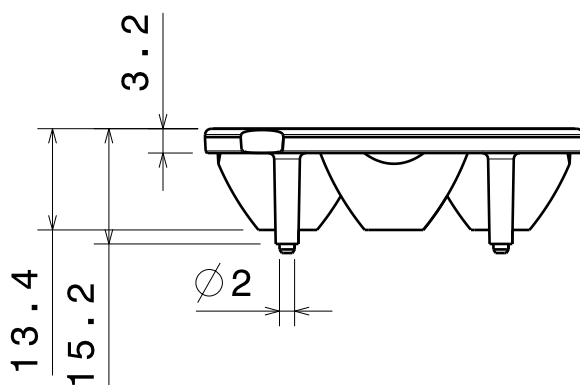
<http://ledil.fi/sites/default/files/Documents/Technical/Material/PMMA%20N%20PLEXIGLAS-Datasheet.pdf>



Isometric view



Bottom view



Front view

Material: PMMA Clear

This drawing is our property.  
It can't be reproduced  
or communicated without  
our written agreement.



Ledil Oy  
Tehdaskatu 13  
FIN-24100 SALO  
Finland

DRAWING TITLE

Datasheet Platinum-4-OM lens

DRAWN BY  
pv

DATE  
31.12.2008

CHECKED BY  
TK

DATE  
03.09.2008

DESIGNED BY  
HH

DATE  
03.09.2008

SIZE  
A4

DRAWING NUMBER  
C10703

REV  
0.1

SCALE 1:1 WEIGHT (g)

SHEET 1/1