



# PRODUCT DATASHEET

## Lena series

last update 26/6/2014

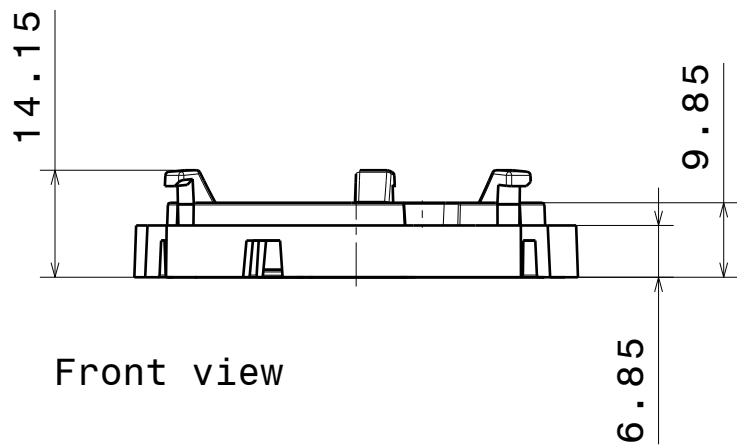
## DETAILS

Product Number	C14146_LENA-STD-BASE-CXA18
Family	Lena
Type	Lens
Color	white
Diameter	58,68 mm
Height	14,15 mm
Style	round
Optic Material	
Holder Material	PC
Fastening	screw
Status	ready
ROHS Compliant	Yes
Date Updated	26/06/2014

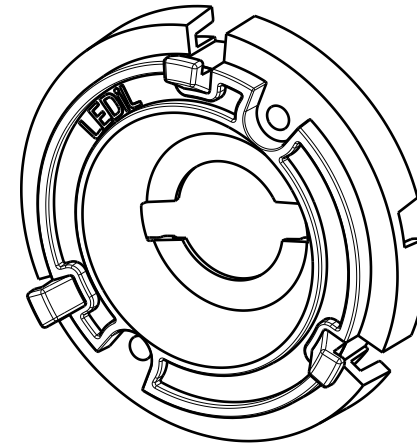


## OPTICAL PROPERTIES

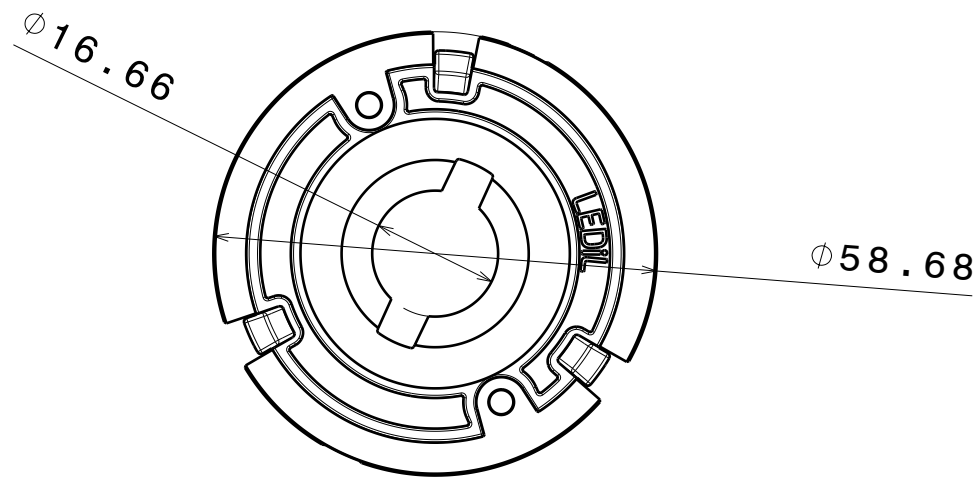
LED	Viewing Angle	Light Beam	Effi- ciency	cd/lm	Connector
CXA/B 1816 & CXA/B 1820 & CXA 1850	N/A deg		-	sim: 0.000	-



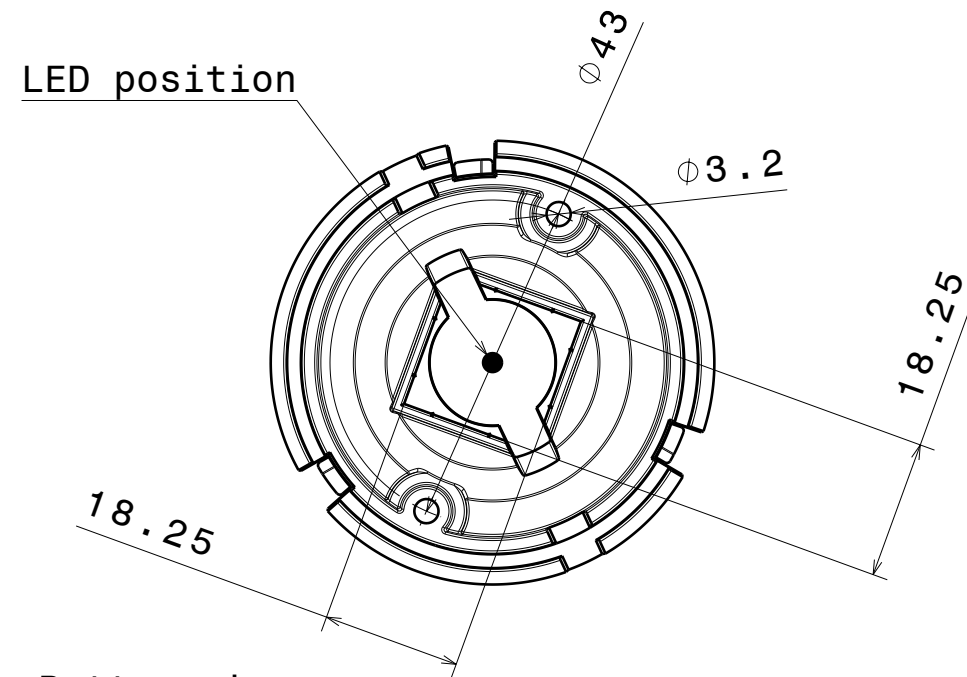
Front view



Isometric view

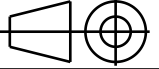


Top view



Bottom view

INDEX	PART NO	DESCRIPTION	MATERIAL	COLOUR
1	C14146	LENA-STD-BASE-CXA18	PC	white

Tolerances if not otherwise shown According to DIN ISO 2768-1 Linear measures: class C According to DIN ISO 2768-2 Form and position: class L		<div>LEDiL</div> <div>Ledil Oy Salorankatu 10 FIN 24240 SALO Finland</div>		
THIRD ANGLE PROJECTION: 		DRAWING TITLE C14146_LENA-STD-BASE-CXA18		
This drawing is the property of LEDiL Oy. It may not be reproduced, copied or communicated without a written agreement with LEDiL Oy.		SIZE A3	PART NUMBER C14146	
		SCALE 1:1	WEIGHT 59,47 g	SHEET 1/1

**NOTE: The typical divergence will be changed by different color, chip size and chip position tolerance. The typical total divergence is the full angle measured where the luminous intensity is half of the peak value.**

#### **GENERAL INFORMATION**

- Product series especially designed & optimized for series of LEDs.
- Special care taken to make light distribution as uniform as possible.

Note! Due to use of high power COB's with this product, special attention to proper thermal design is highly recommended. LEDiL has no liability for direct, indirect or consecutive damages arising from the LEDiL products being used outside of the recommended temperature range.