

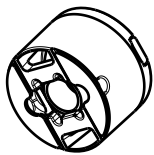
DETAILS

Product Number	CA11173_TINA2-O
Family	Tina2
Type	Assembly
Color	black
Diameter	16,1 mm
Height	11 mm
Style	round
Optic Material	PMMA
Holder Material	PC
Fastening	tape
Status	ready
ROHS Compliant	Yes
Date Updated	20/11/2012



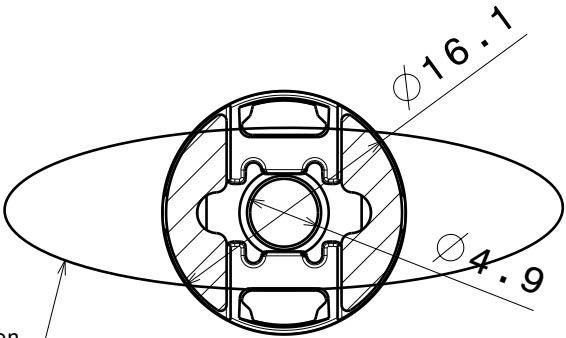
OPTICAL PROPERTIES

LED	Viewing	Light	Efficiency	cd/lm	Connector
	Angle	Beam			
NS6x83	34+22 deg	Oval	87 %	2.700	-
MX-6	34+21 deg	Oval	85 %	2.500	-
NS3x83	36+22 deg	Oval	83 %	2.190	-



Isometric view
Scale: 1:1

Oval beam direction
90dg version has opposite direction

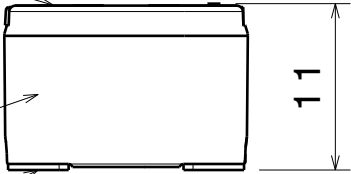


Bottom view

Lens

Holder

Tape



Front view

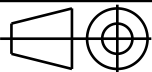
MATERIALS
Lens: PMMA
Holder: PC
Tape: PU Foam

Tolerances if not otherwise shown
According to DIN ISO 2768-1
Linear measures:
Up to 30mm class M, otherwise class C.
According to DIN ISO 2768-2
Form and position: class L
Control for SPC marked dimensions.

LEDiL

Ledil Oy
Salorankatu 10
FIN 24240 SALO
Finland

THIRD ANGLE PROJECTION:



DRAWING TITLE

Datasheet Tina2-oval assy

20121120

ah

SIZE

PART NUMBER

-

-

SCALE

1:1

WEIGHT

-

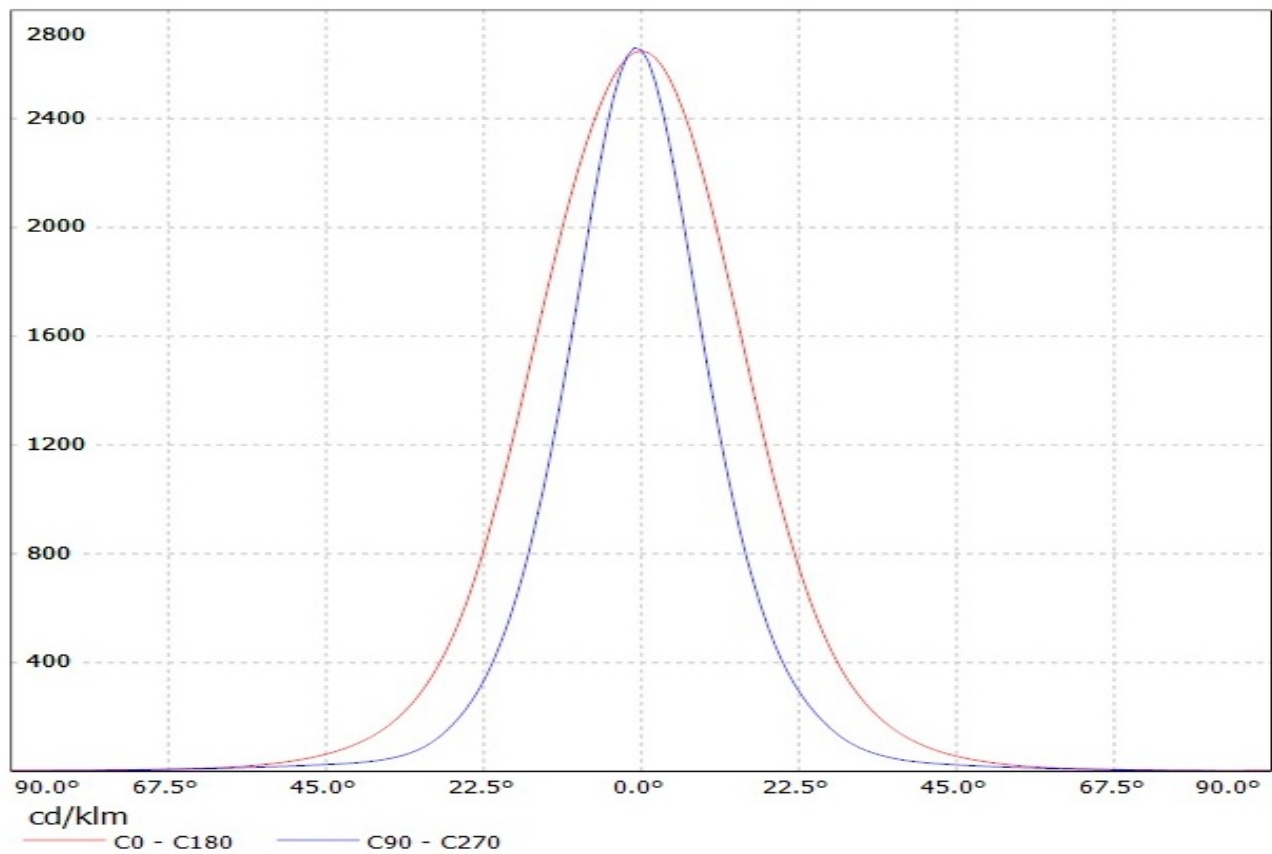
SHEET

-

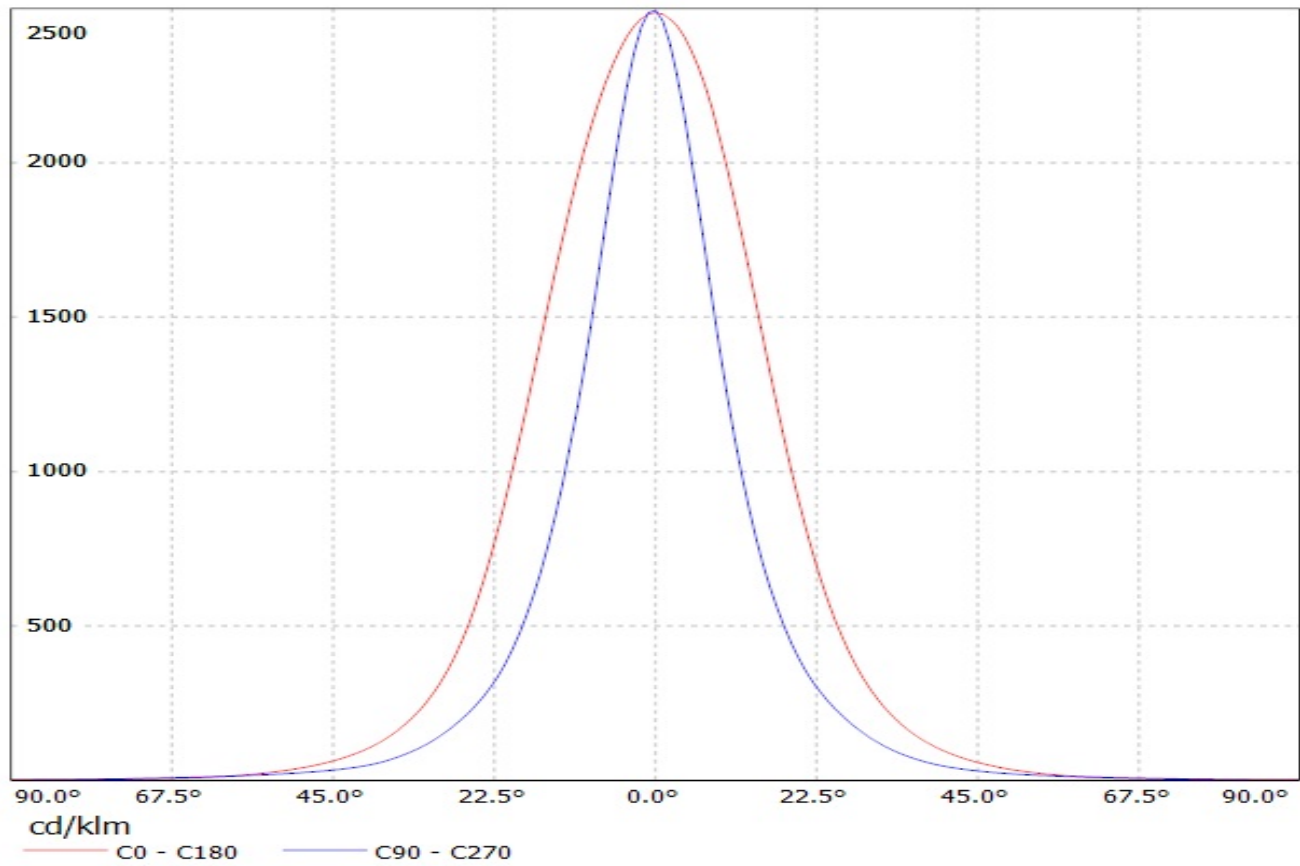
D

A

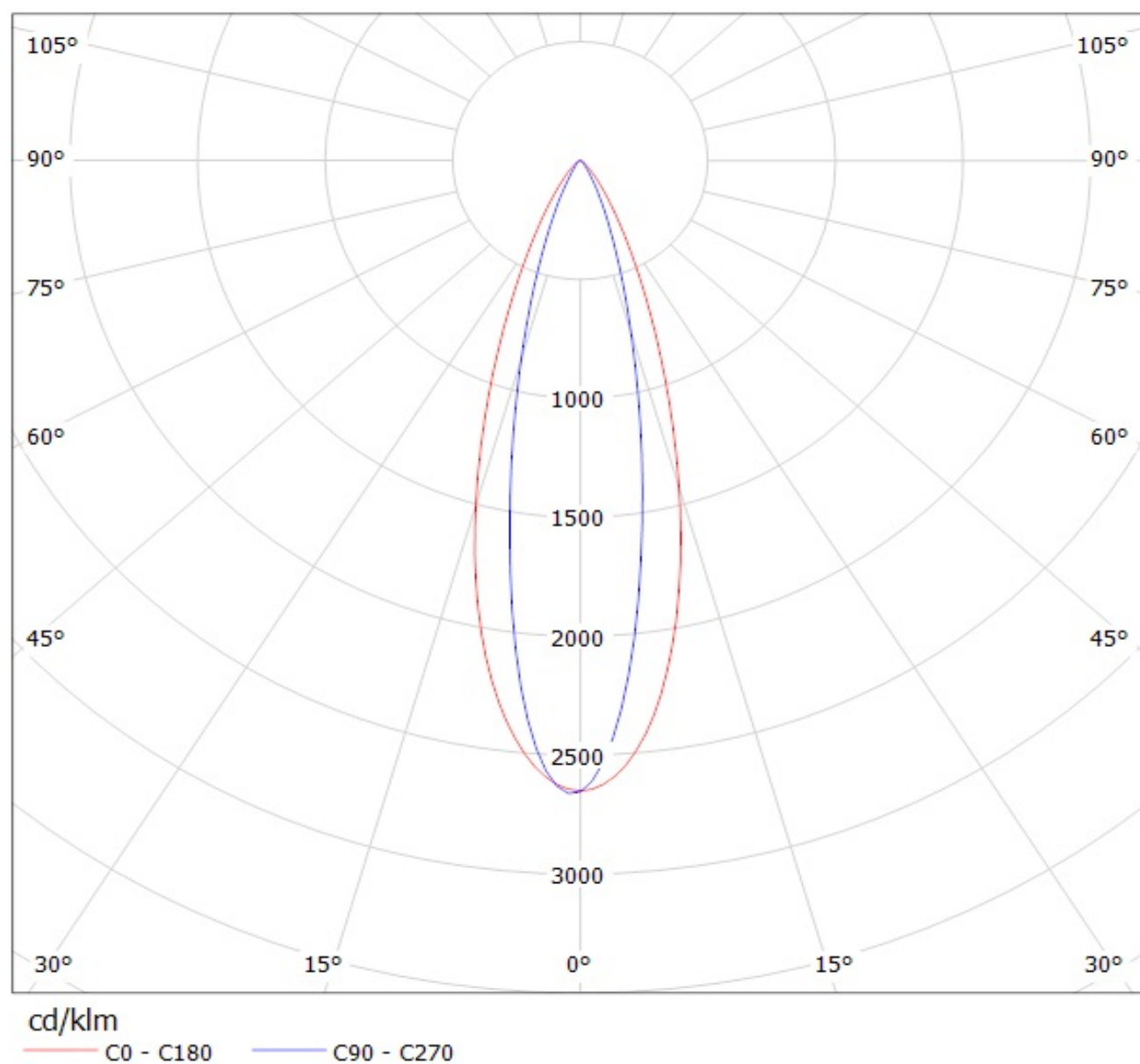
Luminaire: LEDIL OY CP12684_TINA2-O / CA11173_TINA2-O (Nichia NS6x83) Efficiency=87%
Lamps: 1 x Nichia NS6x83 (76lm @ 250mA)



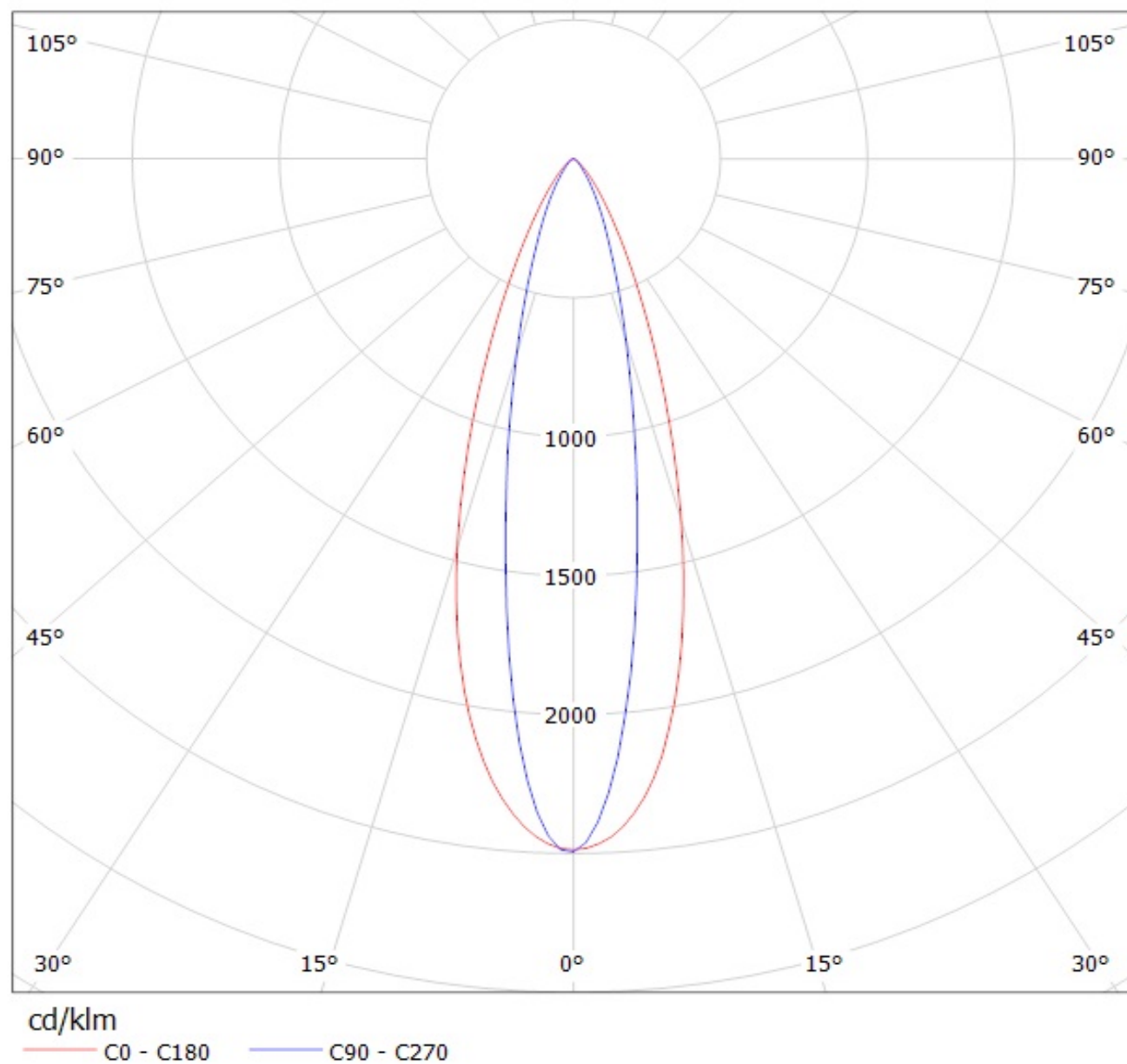
Luminaire: LEDIL OY CP12684_TINA2-O / CA11173_TINA2-O (Cree MX-6) Efficiency=85%
Lamps: 1 x Cree MX-6 (67lm @ 250mA)



Luminaire: LEDIL OY CP12684_TINA2-O / CA11173_TINA2-O (Nichia NS6x83) Efficiency=87%
Lamps: 1 x Nichia NS6x83 (76lm @ 250mA)



Luminaire: LEDIL OY CP12684_TINA2-O / CA11173_TINA2-O (Cree MX-6) Efficiency=85%
Lamps: 1 x Cree MX-6 (67lm @ 250mA)



NOTE: The typical divergence will be changed by different color, chip size and chip position tolerance. The typical total divergence is the full angle measured where the luminous intensity is half of the peak value.

GENERAL INFORMATION

- Product series especially designed & optimized for series of LEDs.
- Special care taken to make light distribution as uniform as possible.
- Fastening to heat sink with a PU foam adhesive tape of automotive grade. Please find fastening details by clicking link: http://www.ledil.com/datasheets/DataSheet_TAPE.pdf

NOTE 1: We advise customer to ensure the suitability and sufficiency of the bond in the end product. For example, mechanical stress, vibration and holes on the surface of the circuit board weaken the strength of the tape.

NOTE 2: Assembly to the surface must be made straight, so the tape bonds constant and balanced with fastening surface. Slanted assembly might cause unbalanced bond to the surface. All surfaces where tape is applied must be clean, dry and free from grease and dirt.

If cleaning of PCB surfaces is needed, please follow strictly the cleaning instructions of your LED manufacturer - this is important as cleaning shall under no circumstances damage LEDs or other electronics components on the PCB.

Further note that optical components shall not be cleaned with any chemicals - only micro fiber cloth may be used to remove fingerprints or other traces from handling.