



# PRODUCT DATASHEET

## Tina2 series

last update 5/6/2012

### DETAILS

<b>Product Number</b>	CP12671_TINA2-D
<b>Family</b>	Tina2
<b>Type</b>	Assembly
<b>Color</b>	black
<b>Diameter</b>	16,1 mm
<b>Height</b>	9,65 mm
<b>Style</b>	round
<b>Optic Material</b>	PMMA
<b>Holder Material</b>	PC
<b>Fastening</b>	glue
<b>Status</b>	ready
<b>ROHS Compliant</b>	Yes
<b>Date Updated</b>	5/06/2012



### OPTICAL PROPERTIES

LED	Viewing Angle	Light Beam	Efficiency	cd/lm	Connector
XB-D	14 deg	Diffuser	88 %	8.700	-

D

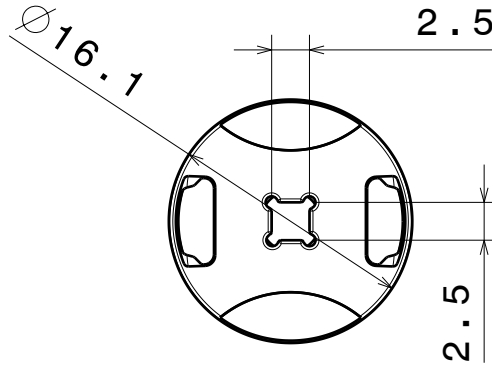
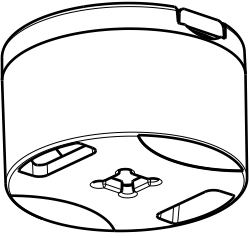
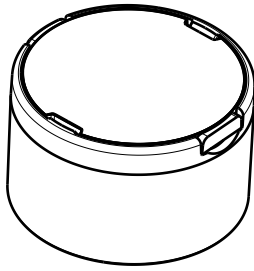
C

B

A

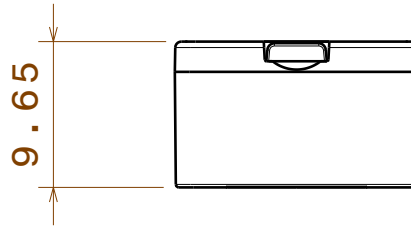
4

4



3

3



2

2

Materials:  
 lens PMMA  
 holder PC, black

Fastening to application:  
 Glue

Tolerances for dimensions:  
 0-20mm tolerance value +/-0.1mm

1

1

This drawing is our property.  
 It can't be reproduced  
 or communicated without  
 our written agreement.



Ledil Oy  
 Salorankatu 10  
 FIN 24240 SALO  
 Finland

**DRAWING TITLE**

Datasheet Tina2 XB assy

**DRAWN BY**

pv

**DATE**

19.03.2012

**CHECKED BY**

sn

**DATE**

19.03.2012

**SIZE**

A4

**DRAWING NUMBER**

-

**REV**

1

**DESIGNED BY**

pv

**DATE**

12.03.2012

**SCALE**

2:1

**WEIGHT (g)**

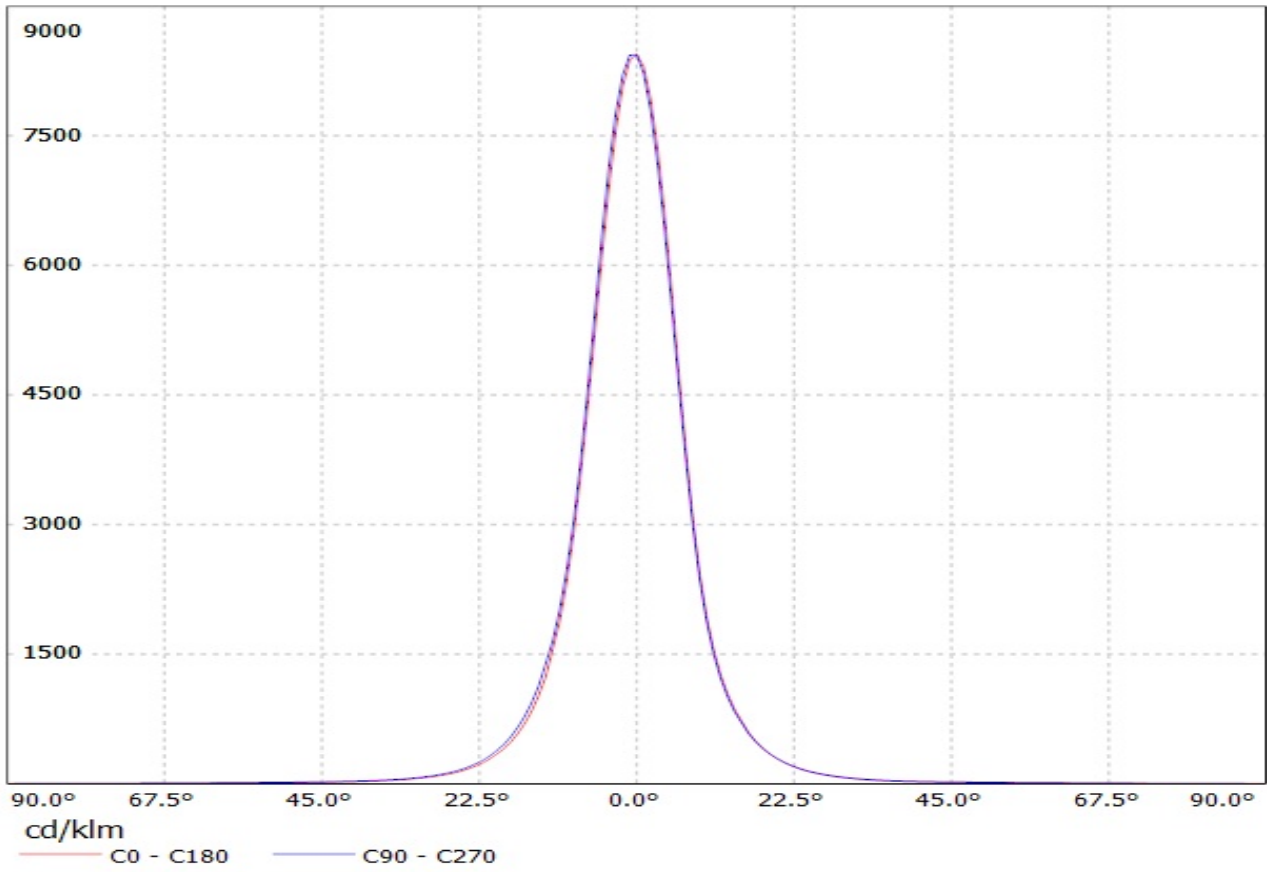
**SHEET**

1/1

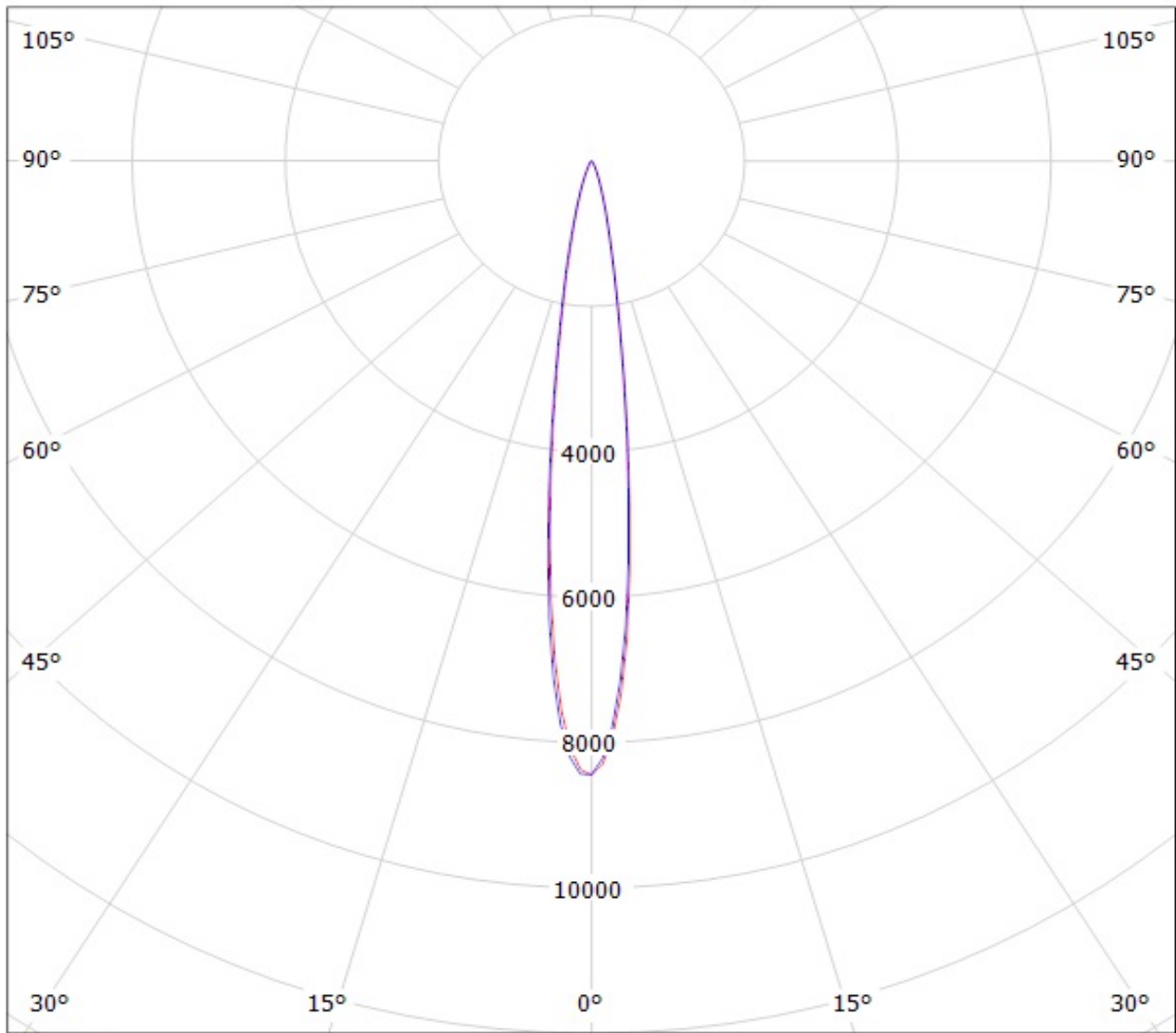
D

A

Luminaire: LEDIL OY CP12671\_TINA2-D (XB-D) Efficiency=88%  
Lamps: 1 x Cree XB-D white (97lm @ 250mA)



Luminaire: LEDIL OY CP12671\_TINA2-D (XB-D) Efficiency=88%  
Lamps: 1 x Cree XB-D white (97lm @ 250mA)



cd/klm

— C0 - C180

— C90 - C270

**NOTE: The typical divergence will be changed by different color, chip size and chip position tolerance. The typical total divergence is the full angle measured where the luminous intensity is half of the peak value.**

### **GENERAL INFORMATION**

- Product series especially designed & optimized for series of LEDs.
- Special care taken to make light distribution as uniform as possible.
- Fastening to PCB with appropriate adhesive. By clicking link below you can find Ledil recommended glue options.  
[http://www.ledil.com/datasheets/DataSheet\\_GLUES.pdf](http://www.ledil.com/datasheets/DataSheet_GLUES.pdf)

**NOTE 1: We advise customer to ensure the suitability and sufficiency of the bond in the end product. For example, mechanical stress, vibration and holes on the surface of the circuit board weaken the strength of the glue.**

**NOTE 2: All surfaces where glue is applied must be clean, dry and free from grease and dirt. If cleaning of PCB surfaces is needed, please follow strictly the cleaning instructions of your LED manufacturer -this is important as cleaning shall under no circumstances damage LEDs or other electronics components on the PCB.**

**Further note that optical components shall not be cleaned with any chemicals - only micro fiber cloth may be used to remove fingerprints or other traces from handling.**