



# PRODUCT DATASHEET

## Tina2 series

last update 19/6/2012

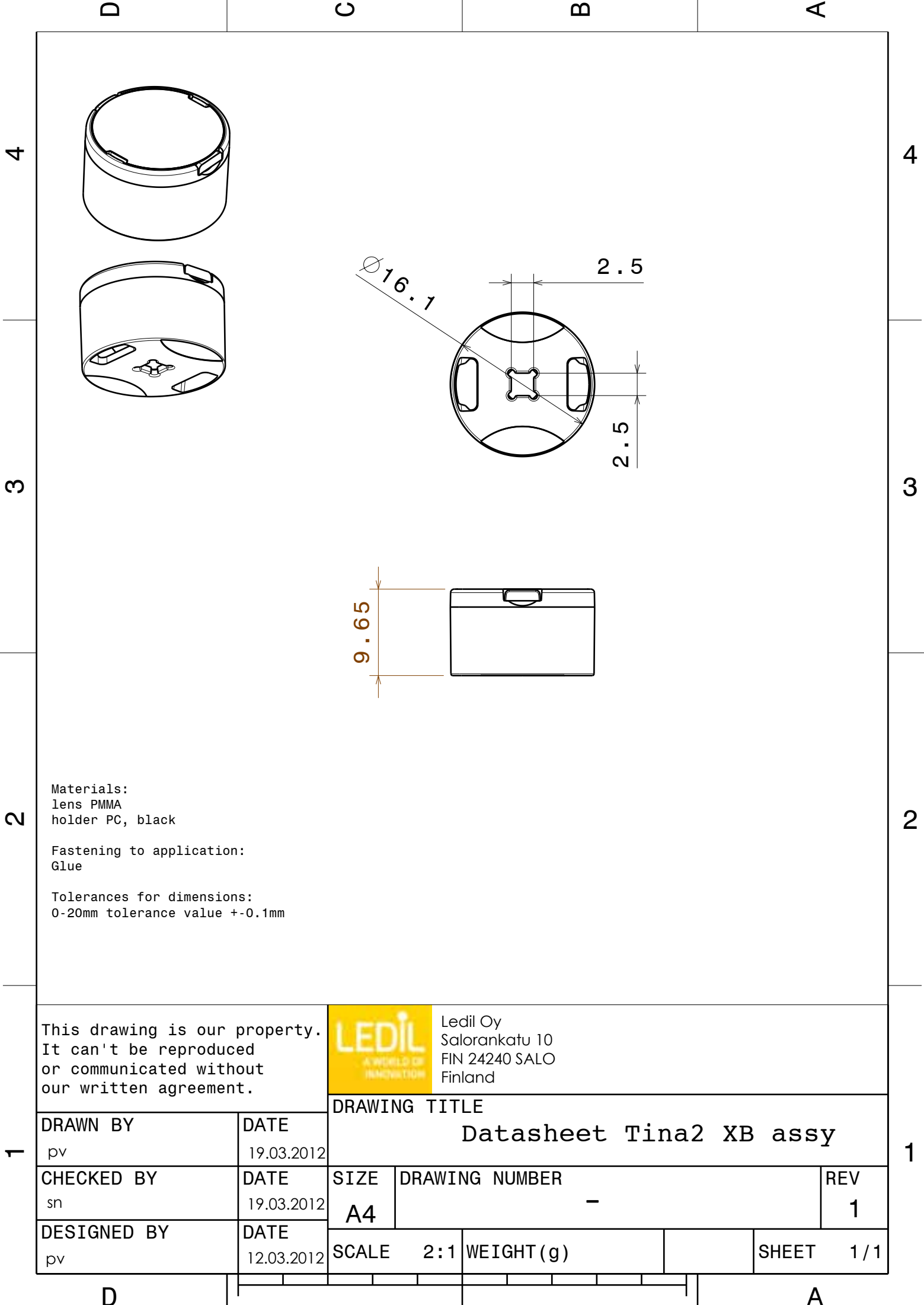
### DETAILS

|                 |                 |
|-----------------|-----------------|
| Product Number  | CP12674_TINA2-W |
| Family          | Tina2           |
| Type            | Assembly        |
| Color           | black           |
| Diameter        | 16,1 mm         |
| Height          | 9,65 mm         |
| Style           | round           |
| Optic Material  | PMMA            |
| Holder Material | PC              |
| Fastening       | glue            |
| Status          | ready           |
| ROHS Comliant   | Yes             |
| Date Updated    | 19/06/2012      |



### OPTICAL PROPERTIES

|      | Viewing | Light | Effi-  |       |           |
|------|---------|-------|--------|-------|-----------|
| LED  | Angle   | Beam  | ciency | cd/lm | Connector |
| XB-D | 39 deg  | Wide  | 81 %   | 1.800 | -         |



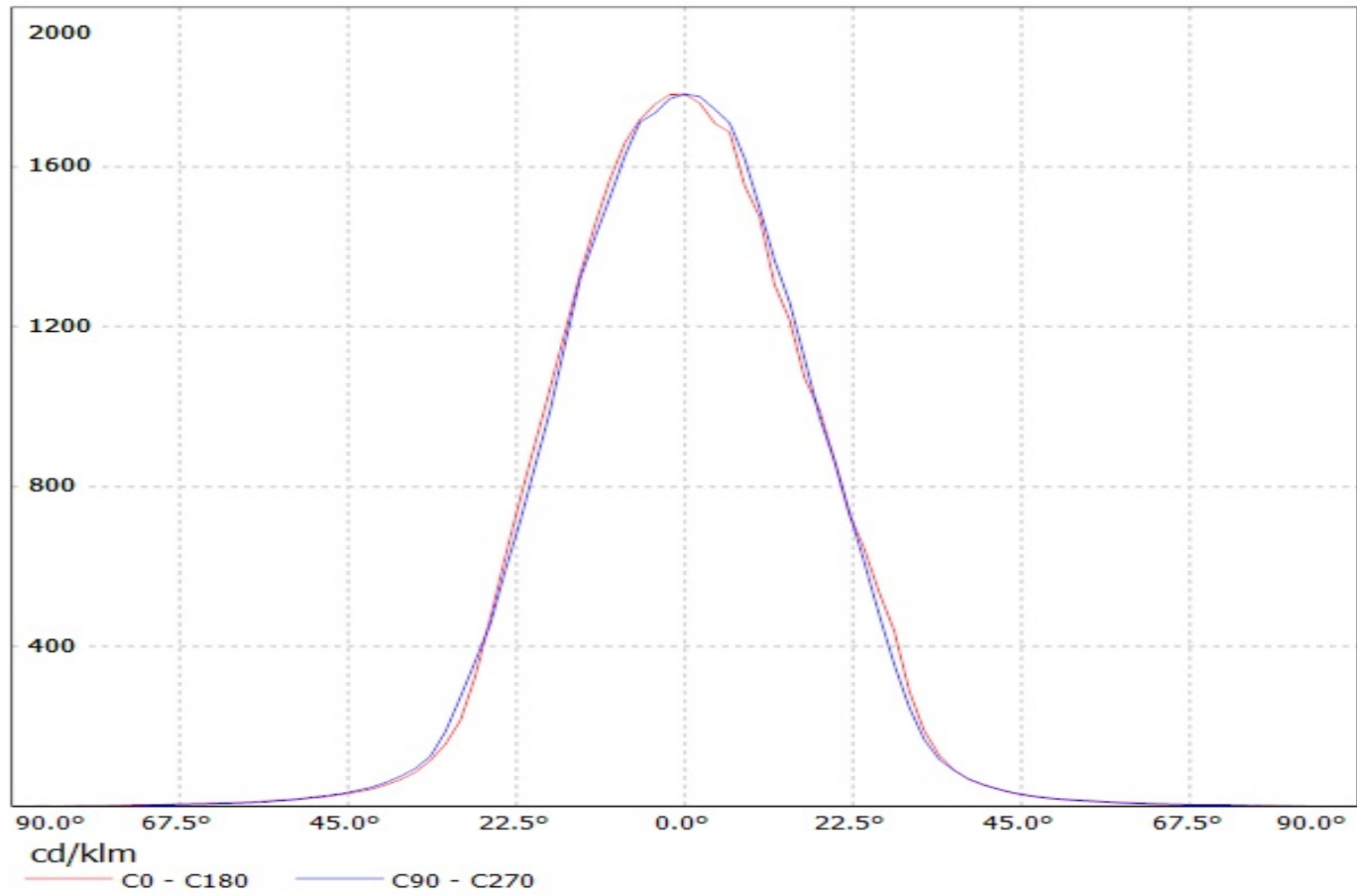
Materials:  
lens PMMA  
holder PC, black

Fastening to application:  
Glue

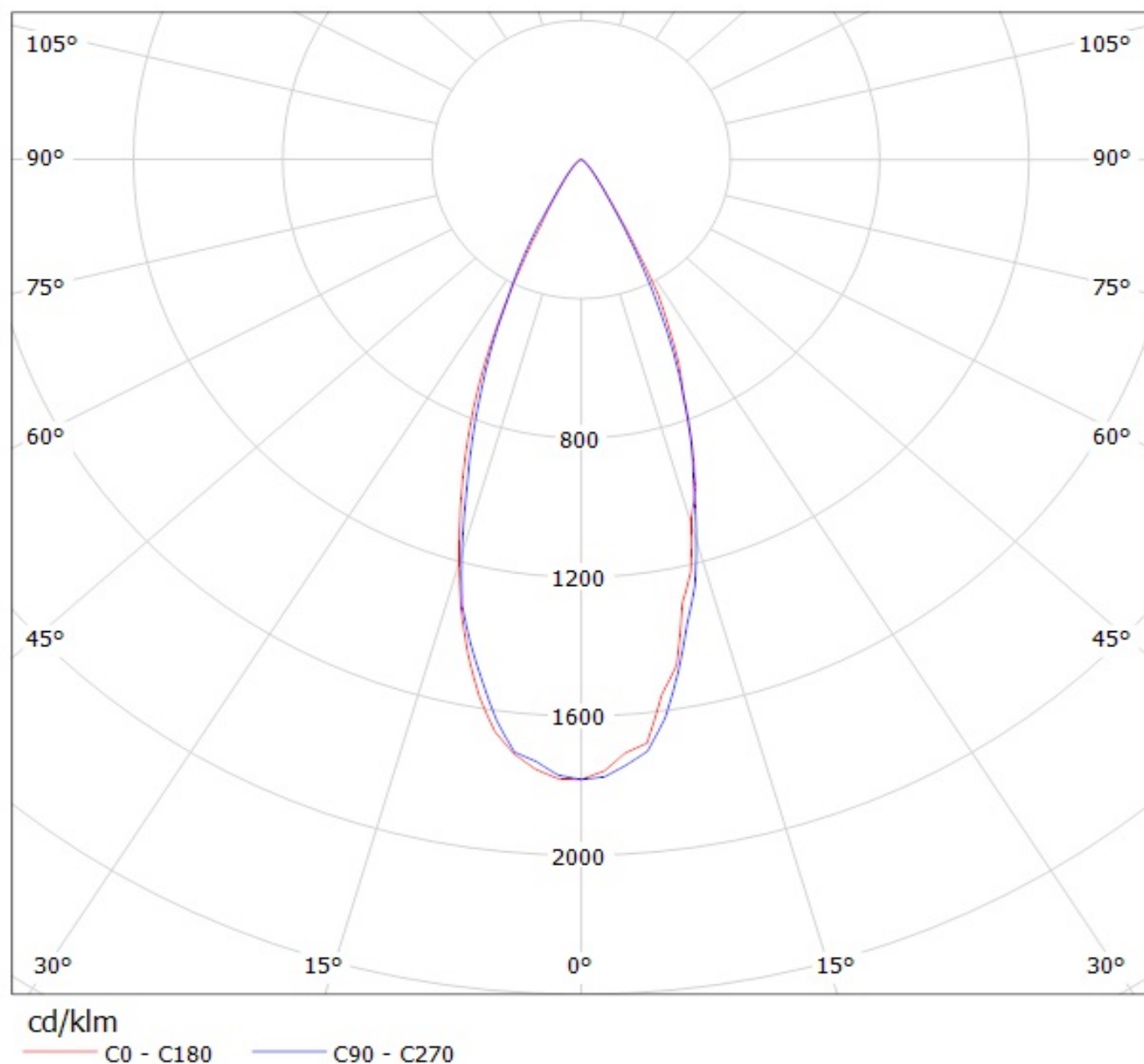
Tolerances for dimensions:  
0-20mm tolerance value  $\pm 0.1$ mm

|  |            |   |                |                         |  |       |  |
|--|------------|---|----------------|-------------------------|--|-------|--|
| This drawing is our property.<br>It can't be reproduced<br>or communicated without<br>our written agreement. |            | <div><div>LEDIL</div><div>A WORLD OF INNOVATION</div></div> <div>Ledil Oy<br/>Salorankatu 10<br/>FIN 24240 SALO<br/>Finland</div> |                | DRAWING TITLE           |  |       |  |
|  |            |   |                | Datasheet Tina2 XB assy |  |       |  |
| DRAWN BY   | DATE       | SIZE  | DRAWING NUMBER |                         |  | REV   |  |
| pv   | 19.03.2012 | A4  | -              |                         |  | 1     |  |
| CHECKED BY   | DATE       | SCALE   |                | WEIGHT (g)              |  | SHEET |  |
| sn   | 19.03.2012 | 2 : 1   |                |                         |  | 1 / 1 |  |
| DESIGNED BY  | DATE       |   |                |                         |  |       |  |
| pv   | 12.03.2012 |   |                |                         |  |       |  |

Luminaire: Ledil Oy CP12674\_TINA2-W (Cree XB-D 94lm @ 250mA) Efficiency=81%  
Lamps: 1 x Cree XB-D 94lm @ 250mA



Luminaire: Ledil Oy CP12674\_TINA2-W (Cree XB-D 94lm @ 250mA) Efficiency=81%  
Lamps: 1 x Cree XB-D 94lm @ 250mA



**NOTE:** The typical divergence will be changed by different color, chip size and chip position tolerance. The typical total divergence is the full angle measured where the luminous intensity is half of the peak value.

## **GENERAL INFORMATION**

- Product series especially designed & optimized for series of LEDs.
- Special care taken to make light distribution as uniform as possible.
- Fastening to PCB with appropriate adhesive. By clicking link below you can find Ledil recommended glue options.  
[http://www.ledil.com/datasheets/DataSheet\\_GLUES.pdf](http://www.ledil.com/datasheets/DataSheet_GLUES.pdf)

**NOTE 1:** We advise customer to ensure the suitability and sufficiency of the bond in the end product. For example, mechanical stress, vibration and holes on the surface of the circuit board weaken the strength of the glue.

**NOTE 2:** All surfaces where glue is applied must be clean, dry and free from grease and dirt. If cleaning of PCB surfaces is needed, please follow strictly the cleaning instructions of your LED manufacturer -this is important as cleaning shall under no circumstances damage LEDs or other electronics components on the PCB.

Further note that optical components shall not be cleaned with any chemicals - only micro fiber cloth may be used to remove fingerprints or other traces from handling.