



PRODUCT DATASHEET

Tina2 series

last update 5/6/2012

DETAILS

Product Number	CP12679_TINA2-M
Family	Tina2
Type	Assembly
Color	black
Diameter	16,1 mm
Height	9,65 mm
Style	round
Optic Material	PMMA
Holder Material	PC
Fastening	glue
Status	ready
ROHS Compliant	Yes
Date Updated	5/06/2012



OPTICAL PROPERTIES

LED	Viewing Angle	Light Beam	Efficiency	cd/lm	Connector
XT-E	29 deg	Medium	81 %	2.600	-
XP-G	30 deg	Medium	88 %	2.800	-

D

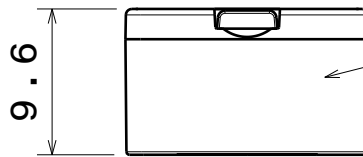
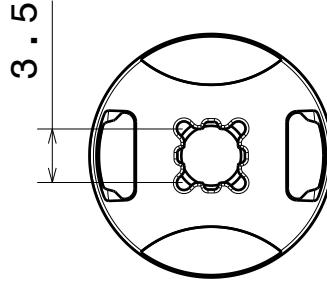
C

B

A

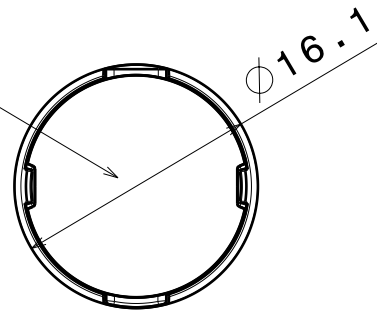


Isometric view
Scale: 1:1



Holder

Lens



Materials:
Lens PMMA
Holder PC, Black

Tolerances for dimensions:
0-20mm tolerance value $\pm 0.1\text{mm}$
21-45mm tolerance value $\pm 0.2\text{mm}$
46-90mm tolerance value $\pm 0.3\text{mm}$
91-100mm tolerance value $\pm 0.4\text{mm}$
101-mm tolerance value $\pm 0.5\text{mm}$

This drawing is our property.
It can't be reproduced
or communicated without
our written agreement.



Ledil Oy
Salorankatu 10
FIN 24240 SALO
Finland

DRAWING TITLE

Datasheet Tina2 XP Glue Assy

DRAWN BY

pv

DATE

11.04.2012

CHECKED BY

sn

DATE

12.03.2012

DESIGNED BY

pv

DATE

12.03.2012

SIZE

A4

DRAWING NUMBER

-

REV

1

SCALE

2:1

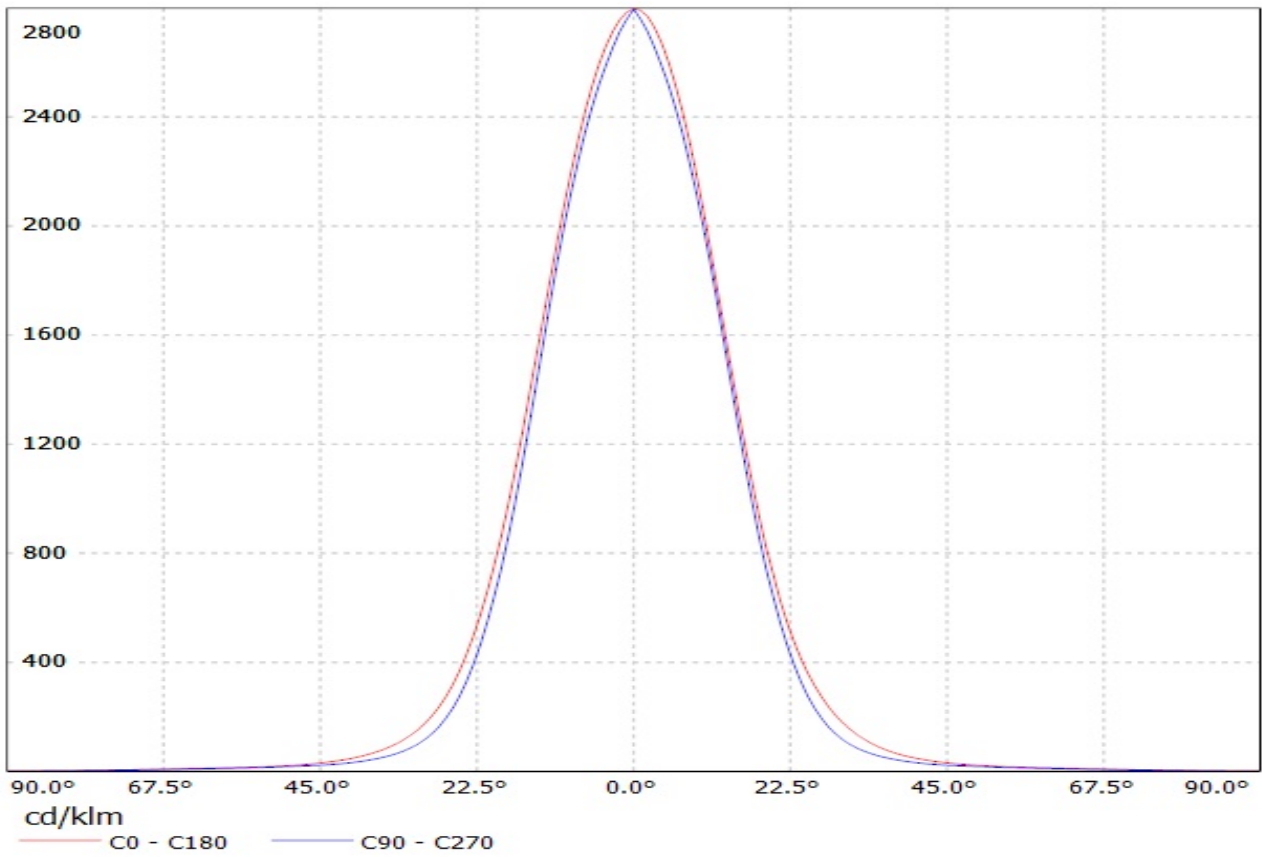
WEIGHT (g)

SHEET

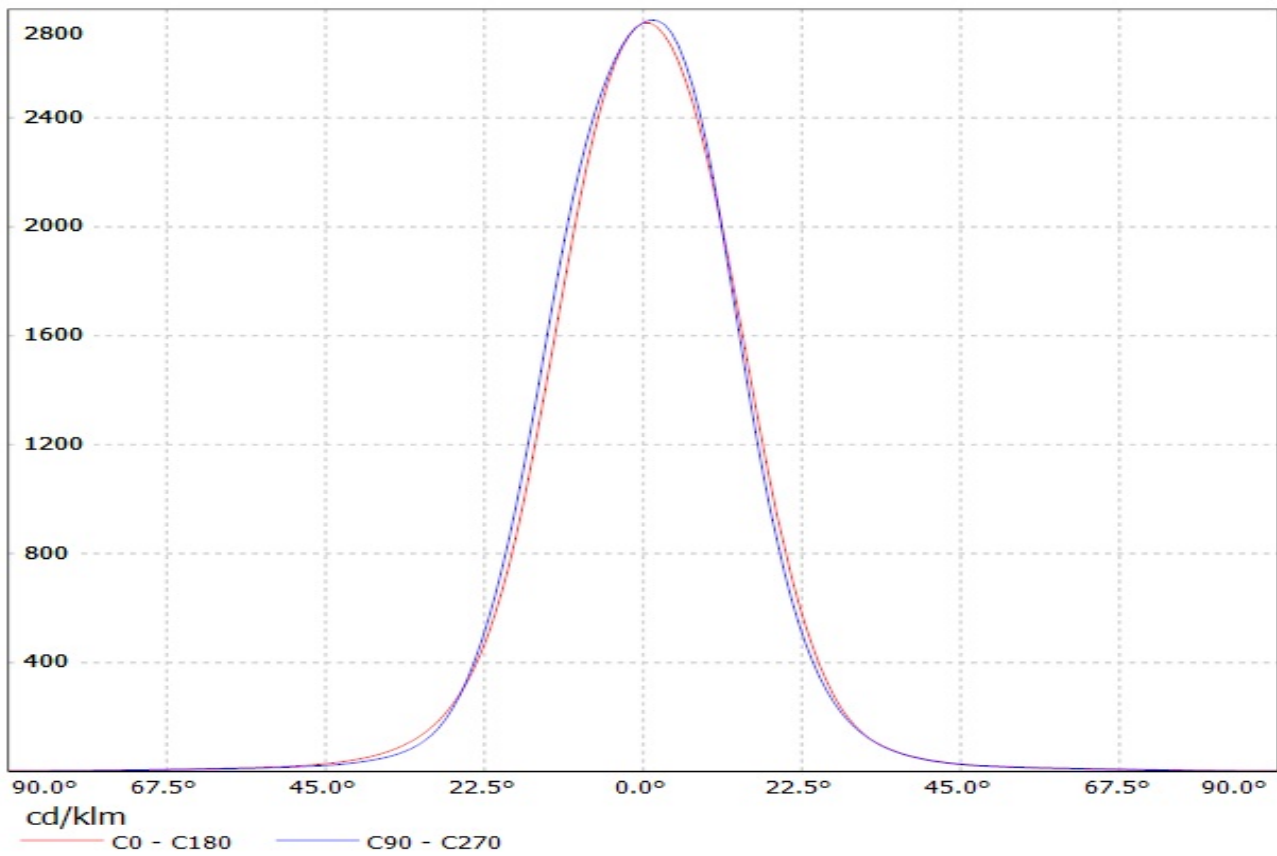
1/1

A

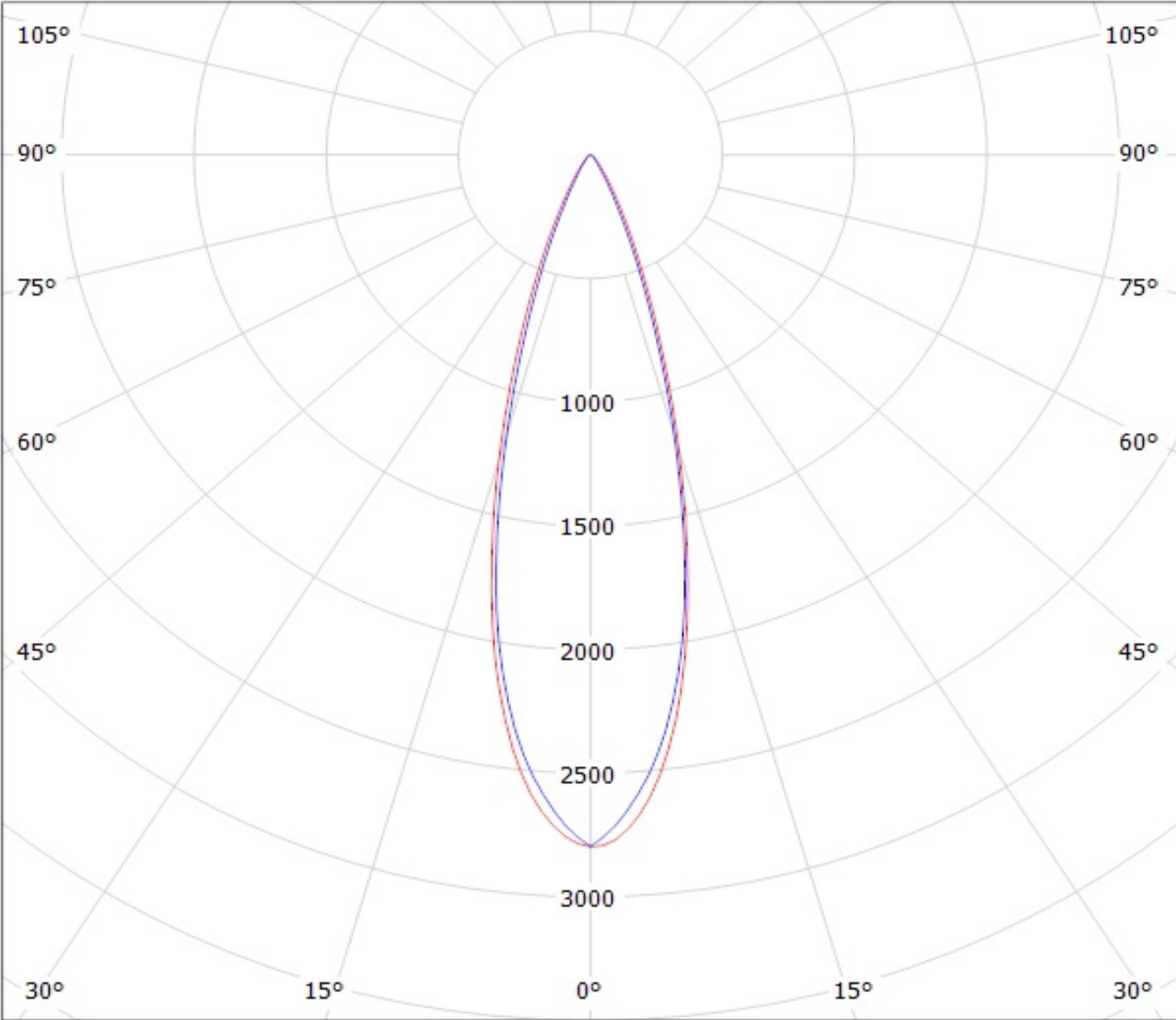
Luminaire: LEDIL OY CP12679_TINA2-M (XT-E AWT) Efficiency=82%
Lamps: 1 x Cree XT-E AWT (113lm @ 250mA)



Luminaire: LEDIL OY CP12679_TINA2-M (XP-G) Efficiency=87%
Lamps: 1 x Cree XP-G (92lm@250mA)



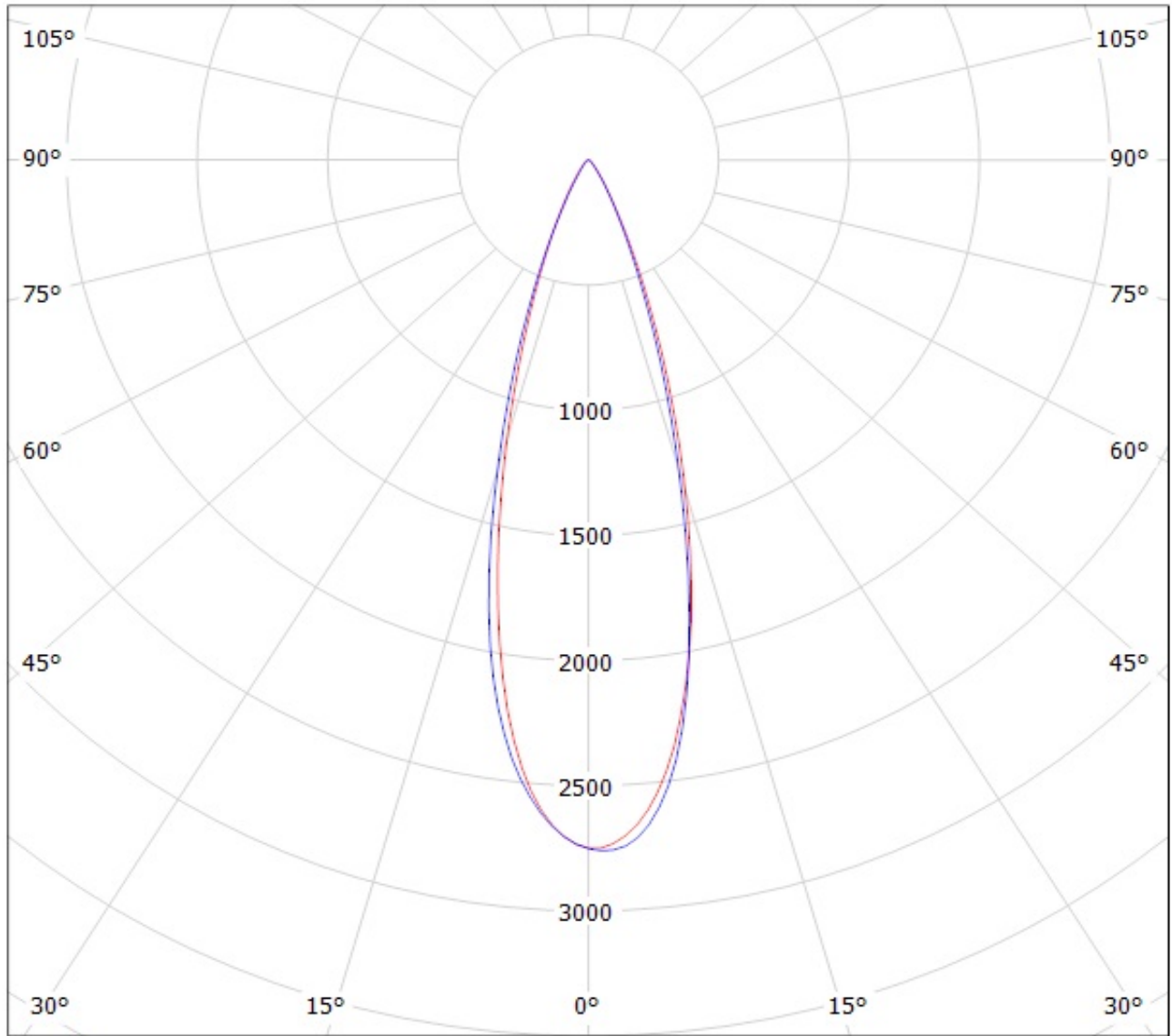
Luminaire: LEDIL OY CP12679_TINA2-M (XT-E AWT) Efficiency=82%
Lamps: 1 x Cree XT-E AWT (113lm @ 250mA)



cd/klm

— C0 - C180 — C90 - C270

Luminaire: LEDIL OY CP12679_TINA2-M (XP-G) Efficiency=87%
Lamps: 1 x Cree XP-G (92lm@250mA)



cd/klm

— C0 - C180

— C90 - C270

NOTE: The typical divergence will be changed by different color, chip size and chip position tolerance. The typical total divergence is the full angle measured where the luminous intensity is half of the peak value.

GENERAL INFORMATION

- Product series especially designed & optimized for series of LEDs.
- Special care taken to make light distribution as uniform as possible.
- Fastening to PCB with appropriate adhesive. By clicking link below you can find Ledil recommended glue options.
http://www.ledil.com/datasheets/DataSheet_GLUES.pdf

NOTE 1: We advise customer to ensure the suitability and sufficiency of the bond in the end product. For example, mechanical stress, vibration and holes on the surface of the circuit board weaken the strength of the glue.

NOTE 2: All surfaces where glue is applied must be clean, dry and free from grease and dirt. If cleaning of PCB surfaces is needed, please follow strictly the cleaning instructions of your LED manufacturer -this is important as cleaning shall under no circumstances damage LEDs or other electronics components on the PCB.

Further note that optical components shall not be cleaned with any chemicals - only micro fiber cloth may be used to remove fingerprints or other traces from handling.