

**Ordering number FA10307\_K2S-RS**

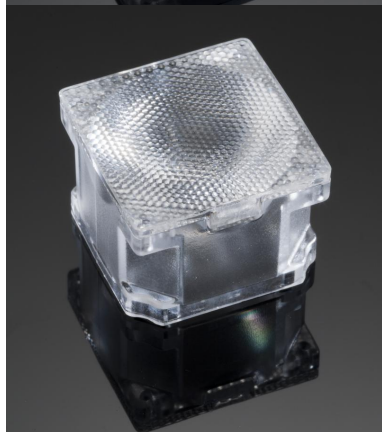
Family	Rose	FWHM	8 degrees
Type	Assembly	Efficiency	(simulated) 0 %
LED	LUXEON K2	cd/Im	19.000
Color	Clear	Gerber File	Available
Diameter	21.6 + 21.6 mm		
Height	15.6 mm		
Style	Square		
Optic Material	PC		
Holder Material	PC		
Fastening	Tape		
Status	Ready		

**Ordering number FA10329\_K2S-SS**

Family	Rose	FWHM	12 degrees
Type	Assembly	Efficiency	(simulated) 0 %
LED	LUXEON K2	cd/Im	-
Color	Clear	Gerber File	Available
Diameter	21.6 + 21.6 mm		
Height	15.6 mm		
Style	Square		
Optic Material	PC		
Holder Material	PC		
Fastening	Tape		
Status	Ready		

**Ordering number FA10308\_K2S-D**

Family	Rose	FWHM	28 degrees
Type	Assembly	Efficiency	(simulated) 0 %
LED	LUXEON K2	cd/Im	1.950
Color	Clear	Gerber File	Available
Diameter	21.6 + 21.6 mm		
Height	15.6 mm		
Style	Square		
Optic Material	PC		
Holder Material	PC		
Fastening	Tape		
Status	Ready		

**Ordering number FA10309\_K2S-M**

Family	Rose	FWHM	30 degrees
Type	Assembly	Efficiency	(simulated) 0 %
LED	LUXEON K2	cd/Im	1.440
Color	Clear	Gerber File	Available
Diameter	21.6 + 21.6 mm		
Height	15.6 mm		
Style	Square		
Optic Material	PC		
Holder Material	PC		
Fastening	Tape		
Status	Ready		

**Ordering number FA10323\_K2S-W**

Family	Rose	FWHM	40 degrees
Type	Assembly	Efficiency	(simulated) 0 %
LED	LUXEON K2	cd/lm	0.550
Color	Clear	Gerber File	Available
Diameter	21.6 + 21.6 mm		
Height	15.6 mm		
Style	Square		
Optic Material	PC		
Holder Material	PC		
Fastening	Tape		
Status	Ready		

**Ordering number FA10310\_K2S-O**

Family	Rose	FWHM	44+20 degrees
Type	Assembly	Efficiency	(simulated) 0 %
LED	LUXEON K2	cd/lm	1.370
Color	Clear	Gerber File	Available
Diameter	21.6 + 21.6 mm		
Height	15.6 mm		
Style	Square		
Optic Material	PC		
Holder Material	PC		
Fastening	Tape		
Status	Ready		

**NOTE: The typical divergence will be changed by different color, chip size and chip position tolerance. The typical total divergence is the full angle measured where the luminous intensity is half of the peak value.**



## PRODUCT DATASHEET

### Rose series

last update 21/2/2013

PHILIPS  
LUMILEDS

#### GENERAL INFORMATION

- Product series especially designed & optimized for LUXEON K2 series of LEDs.
- Special care taken to make light distribution as uniform as possible.
- Lens material optical grade PC with high UV and temperature resistance (120 degrees of Celcius / 248 degrees of Fahrenheit). Allows use of high current and temperature conditions.

Please find more information about used materials from below:

[http://ledil.fi/sites/default/files/Documents/Technical/Material/PC%20Makrolon%202400\\_2407\\_2456\\_2458-UL.pdf](http://ledil.fi/sites/default/files/Documents/Technical/Material/PC%20Makrolon%202400_2407_2456_2458-UL.pdf)

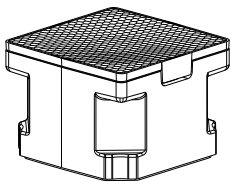
- Optic holder molded by high quality PC material (120 dergees of Celcius / 248 degrees of Fahrenheit).
- Fastening to heat sink with a PU foam adhesive tape of automotive grade. Please find fastening details by clicking link: [http://www.ledil.com/datasheets/DataSheet\\_TAPE.pdf](http://www.ledil.com/datasheets/DataSheet_TAPE.pdf)

**NOTE 1: We advise customer to ensure the suitability and sufficiency of the bond in the end product. For example, mechanical stress, vibration and holes on the surface of the circuit board weaken the strength of the tape.**

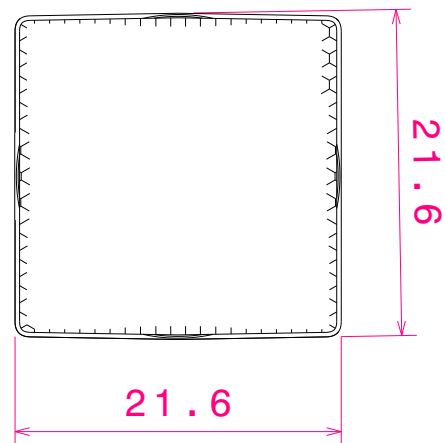
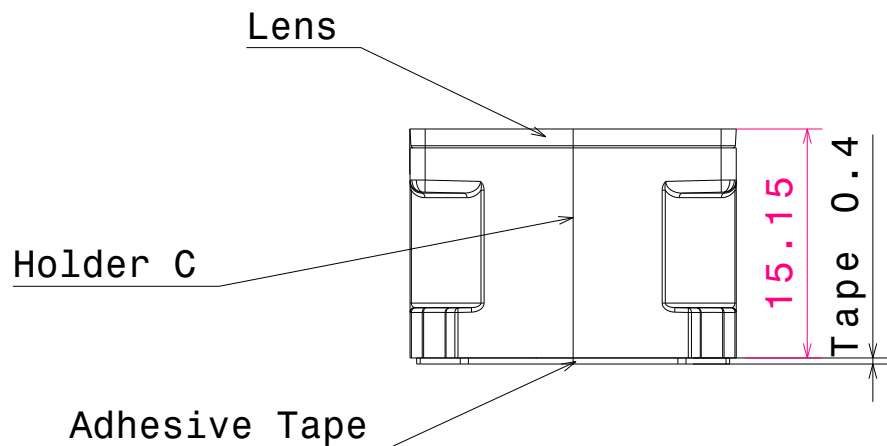
**NOTE 2: Assembly to the surface must be made straight, so the tape bonds constant and balanced with fastening surface. Slanted assembly might cause unbalanced bond to the surface. All surfaces where tape is applied must be clean, dry and free from grease and dirt.**

**If cleaning of PCB surfaces is needed, please follow strictly the cleaning instructions of your LED manufacturer - this is important as cleaning shall under no circumstances damage LEDs or other electronics components on the PCB.**

**Further note that optical components shall not be cleaned with any chemicals - only micro fiber cloth may be used to remove fingerprints or other traces from handling.**



Isometric view  
Scale: 1:1



#### MATERIALS

LENS: PC

HOLDER: PC Clear

TAPE: PU foam with PSA adhesive

This drawing is our property.  
It can't be reproduced  
or communicated without  
our written agreement.

**LEDIL**

L  
T  
F  
F

e  
e  
i  
i

N  
n

d  
h

#### DRAWING TITLE

Datasheet K2S-series assy

DRAWN BY

p

DATE

10.09.2008

CHECKED BY

H

DATE

30.11.2006

DESIGNED BY

HH

DATE

30.11.2006

SIZE

A4

DRAWING NUMBER

REV

1

SCALE

2:1

WEIGHT (g)

SHEET

1 / 1

D

A