

**Product number FA10311_SSS-RS**

Family	Rose	FWHM	9 degrees
Type	Assembly	Efficiency	86 %
LED	P4	cd/Im	21.100
Color	Black	Gerber File	Available
Diameter	21.6 + 21.6 mm		
Height	14.3 mm		
Style	Square		
Optic Material	PC		
Holder Material	PC		
Fastening	Tape		
Status	On production		

**Product number FA10330_SSS-SS**

Family	Rose	FWHM	14 degrees
Type	Assembly	Efficiency	-
LED	P4	cd/Im	11.100
Color	Black	Gerber File	Available
Diameter	21.6 + 21.6 mm		
Height	14.3 mm		
Style	Square		
Optic Material	PC		
Holder Material	PC		
Fastening	Tape		
Status	On production		

**Product number FA11149_SSS-O-90**

Family	Rose	FWHM	14+46 degrees
Type	Assembly	Efficiency	-
LED	P4	cd/Im	(simulated) 0.000
Color	Black	Gerber File	Available
Diameter	21.6 + 21.6 mm		
Height	14.3 mm		
Style	Square		
Optic Material	PC		
Holder Material	PC		
Fastening	Tape		
Status	On production		

**Product number FA10312_SSS-D**

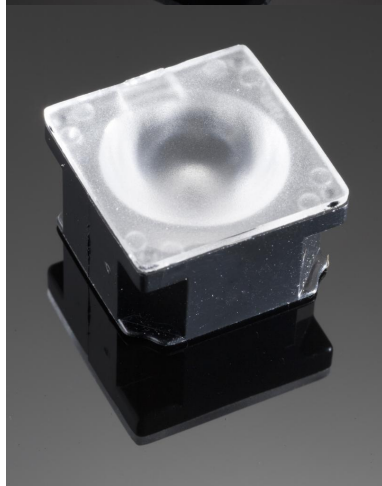
Family	Rose	FWHM	16 degrees
Type	Assembly	Efficiency	84 %
LED	P4	cd/Im	7.800
Color	Black	Gerber File	Available
Diameter	21.6 + 21.6 mm		
Height	14.3 mm		
Style	Square		
Optic Material	PC		
Holder Material	PC		
Fastening	Tape		
Status	On production		

**Product number FA10313_SSS-M**

Family	Rose	FWHM	29 degrees
Type	Assembly	Efficiency	83 %
LED	P4	cd/Im	3.130
Color	Black	Gerber File	Available
Diameter	21.6 + 21.6 mm		
Height	14.3 mm		
Style	Square		
Optic Material	PC		
Holder Material	PC		
Fastening	Tape		
Status	On production		

**Product number FA10314_SSS-O**

Family	Rose	FWHM	45+16 degrees
Type	Assembly	Efficiency	78 %
LED	P4	cd/Im	3.130
Color	Black	Gerber File	Available
Diameter	21.6 + 21.6 mm		
Height	14.3 mm		
Style	Square		
Optic Material	PC		
Holder Material	PC		
Fastening	Tape		
Status	On production		

**Product number FA10539_SSS-W**

Family	Rose	FWHM	49 degrees
Type	Assembly	Efficiency	76 %
LED	P4	cd/Im	1.260
Color	Black	Gerber File	Available
Diameter	21.6 + 21.6 mm		
Height	14.3 mm		
Style	Square		
Optic Material	PC		
Holder Material	PC		
Fastening	Tape		
Status	On production		

NOTE: The typical divergence will be changed by different color, chip size and chip position tolerance. The typical total divergence is the full angle measured where the luminous intensity is half of the peak value.

GENERAL INFORMATION

- Product series especially designed & optimized for P4 series of LEDs.
- Special care taken to make light distribution as uniform as possible.
- Lens material optical grade PC with high UV and temperature resistance (120 degrees of Celcius / 248 degrees of Fahrenheit). Allows use of high current and temperature conditions.

Please find more information about used materials from below:

http://ledil.fi/sites/default/files/Documents/Technical/Material/PC%20Makrolon%202400_2407_2456_2458-UL.pdf

- Optic holder molded by high quality PC material (120 dergees of Celcius / 248 degrees of Fahrenheit).

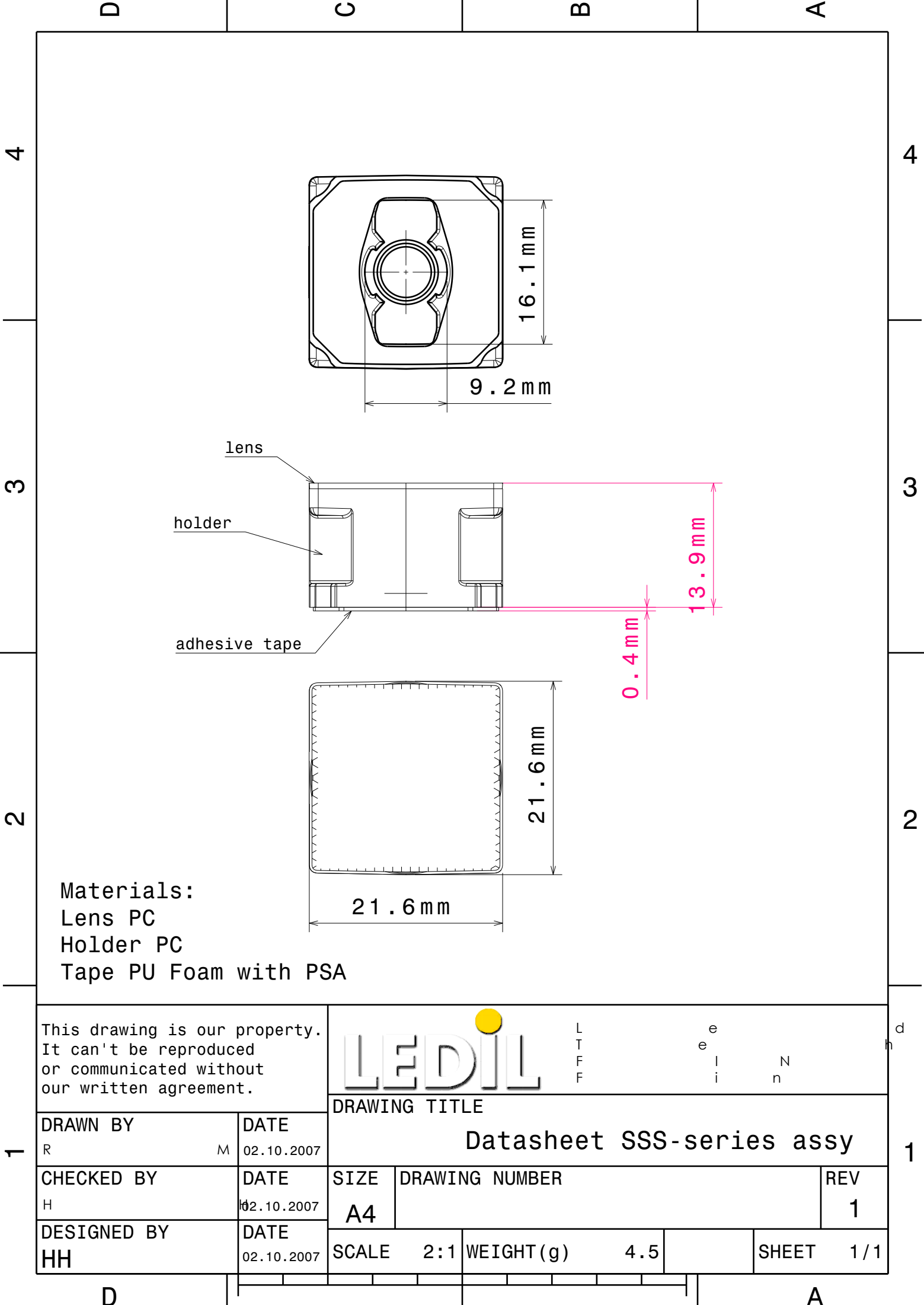
- Fastening to heat sink with a PU foam adhesive tape of automotive grade. Please find fastening details by clicking link: http://www.ledil.com/datasheets/DataSheet_TAPE.pdf

NOTE 1: We advise customer to ensure the suitability and sufficiency of the bond in the end product. For example, mechanical stress, vibration and holes on the surface of the circuit board weaken the strength of the tape.

NOTE 2: Assembly to the surface must be made straight, so the tape bonds constant and balanced with fastening surface. Slanted assembly might cause unbalanced bond to the surface. All surfaces where tape is applied must be clean, dry and free from grease and dirt.

If cleaning of PCB surfaces is needed, please follow strictly the cleaning instructions of your LED manufacturer - this is important as cleaning shall under no circumstances damage LEDs or other electronics components on the PCB.

Further note that optical components shall not be cleaned with any chemicals - only micro fiber cloth may be used to remove fingerprints or other traces from handling.



Materials:
Lens PC
Holder PC
Tape PU Foam with PSA

This drawing is our property.
It can't be reproduced
or communicated without
our written agreement.



L
T
F
F

e
e
l
i
n
N

d

DRAWING TITLE

Datasheet SSS-series assy

DRAWN BY
R M 02.10.2007

CHECKED BY
H 02.10.2007

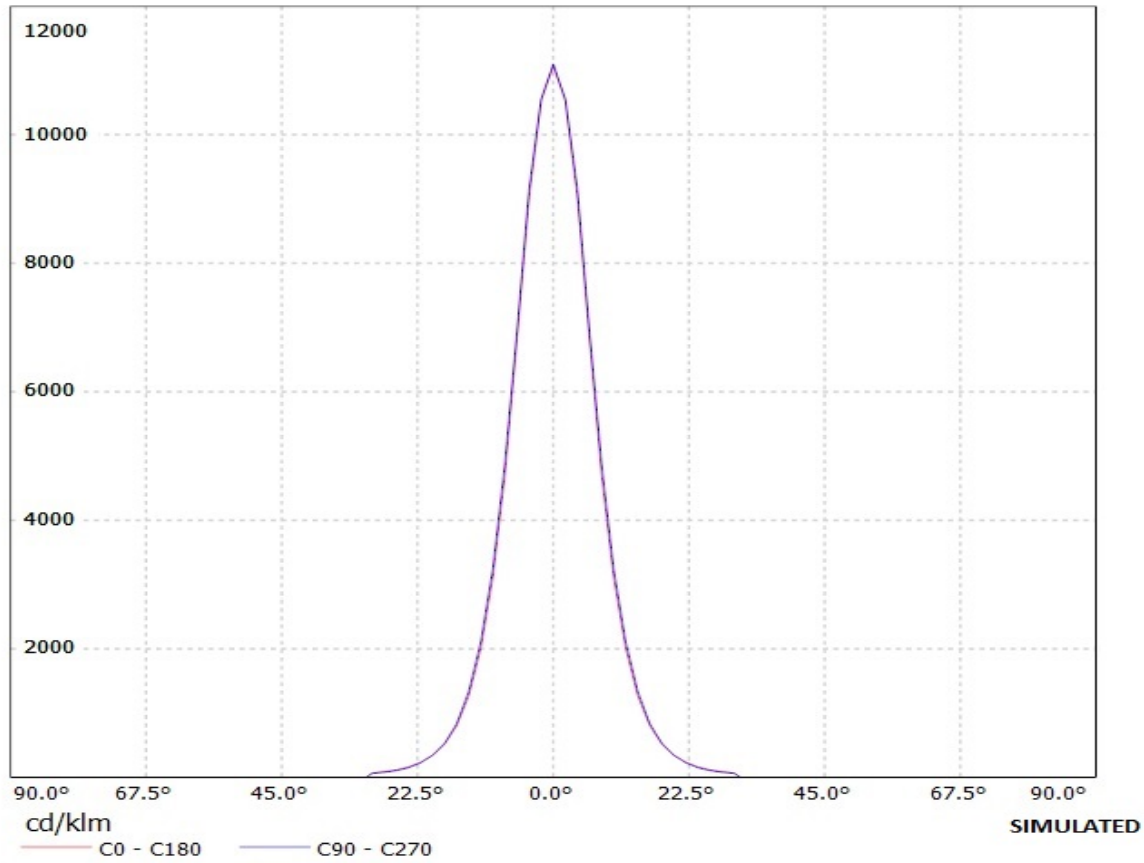
DESIGNED BY
HH 02.10.2007

SIZE A4 DRAWING NUMBER REV 1

SCALE 2:1 WEIGHT (g) 4.5 SHEET 1/1

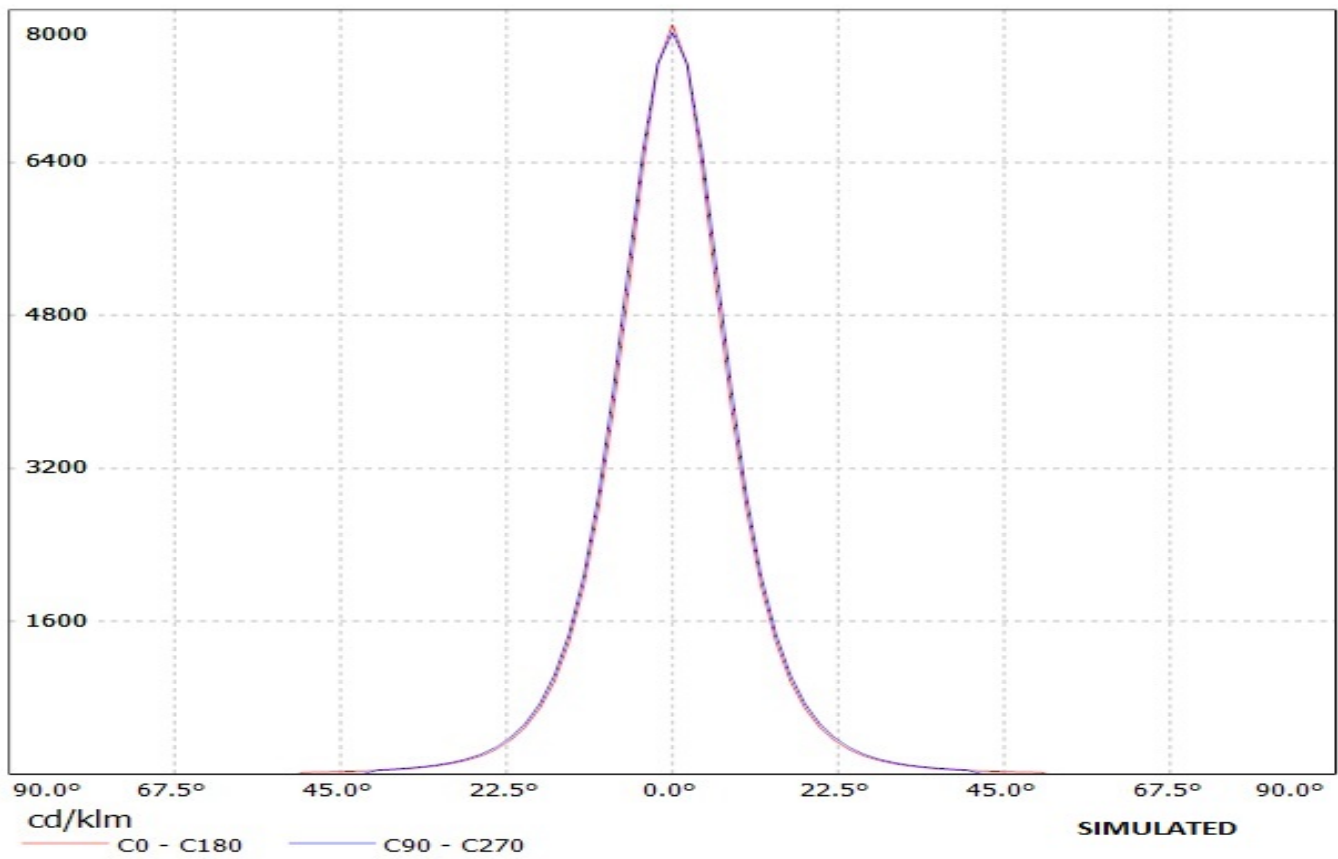
Ledil Oy FA10330_SSS-SS FA10330_SSS-SS / LDC (Linear)

Luminaire: Ledil Oy FA10330_SSS-SS FA10330_SSS-SS
Lamps: 1 x SEOUL P4



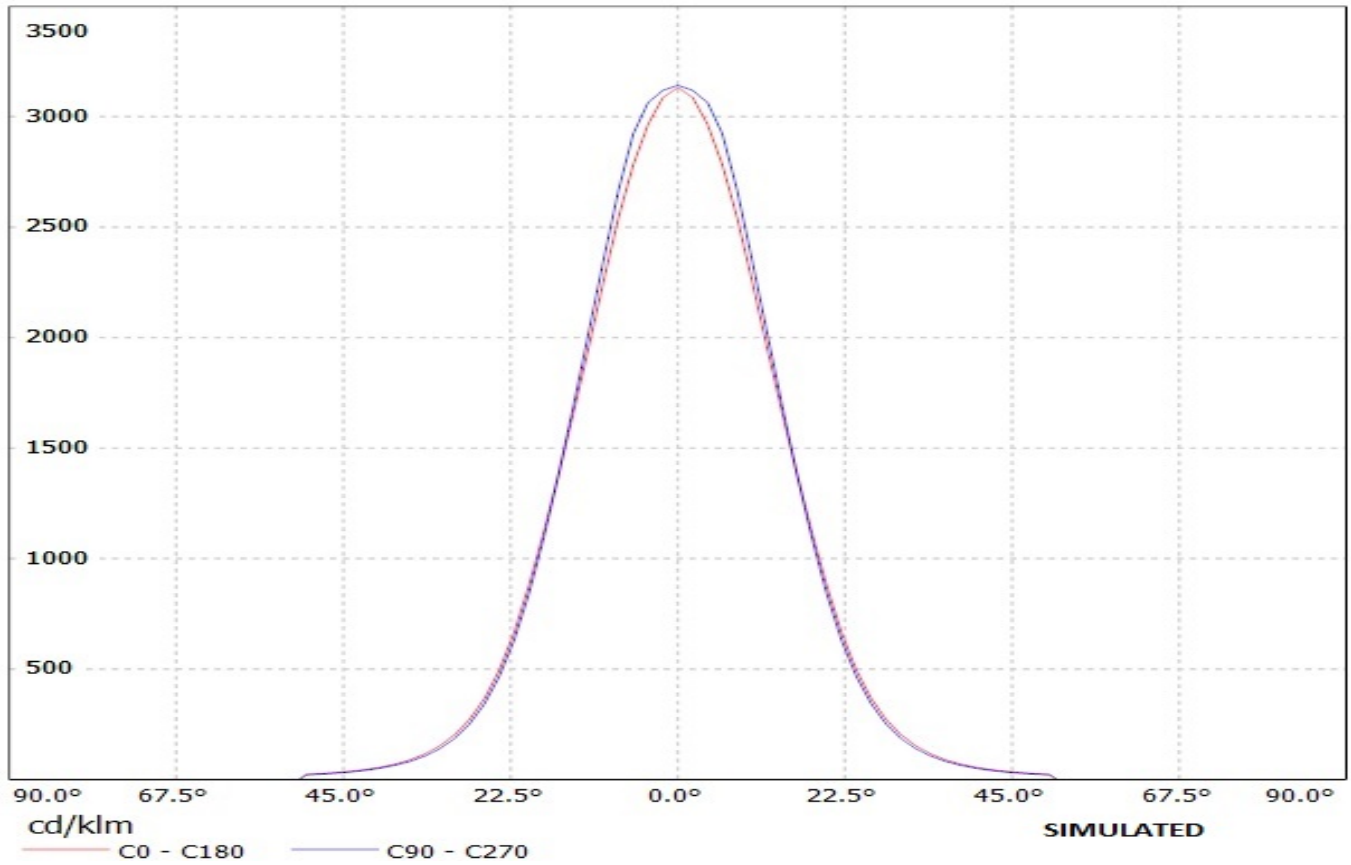
Ledil Oy FA10312_SSS-D FA10312_SSS-D / LDC (Linear)

Luminaire: Ledil Oy FA10312_SSS-D FA10312_SSS-D
Lamps: 1 x SEOUL P4 (white)



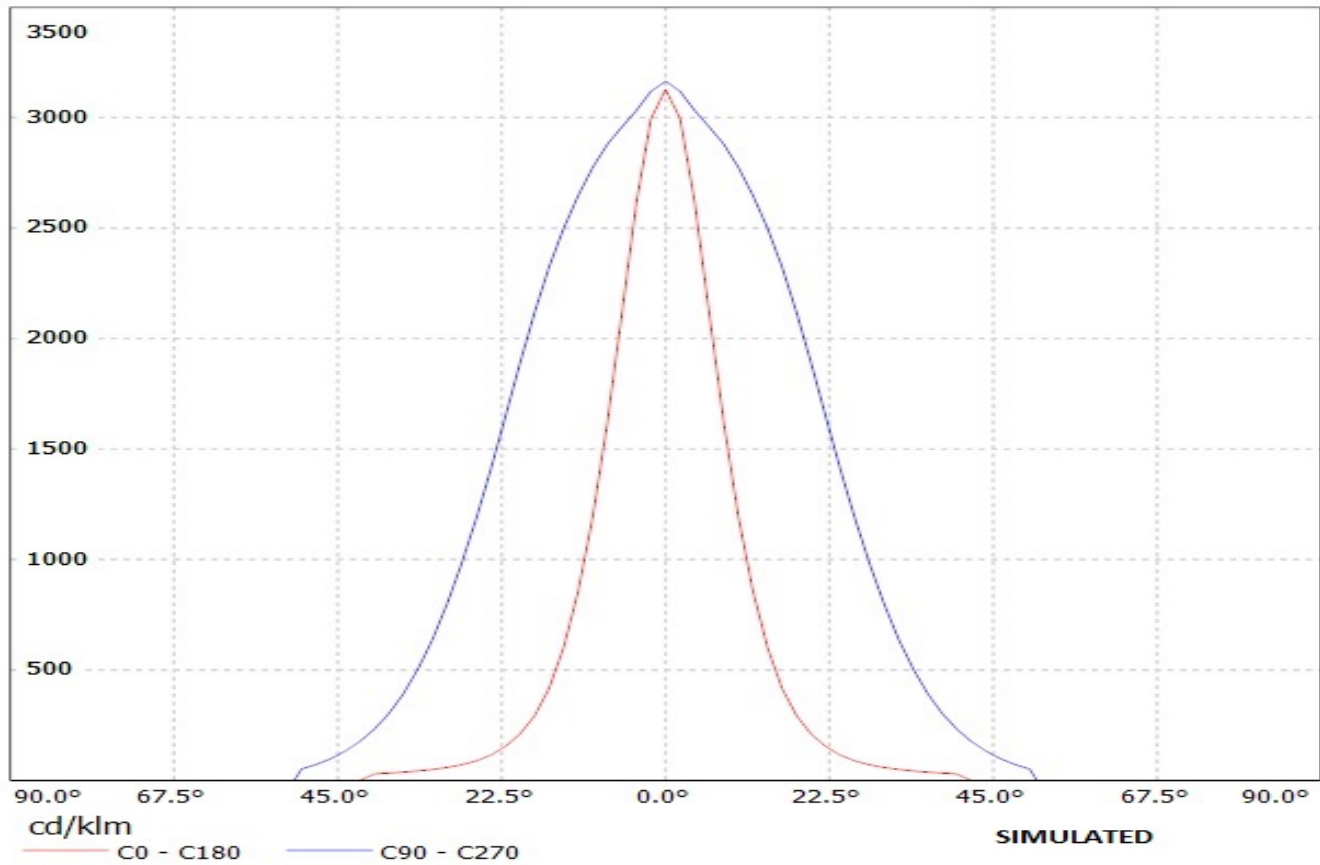
Ledil Oy FA10313_SSS-M FA10313_SSS-M / LDC (Linear)

Luminaire: Ledil Oy FA10313_SSS-M FA10313_SSS-M
Lamps: 1 x SEOUL P4 (white)



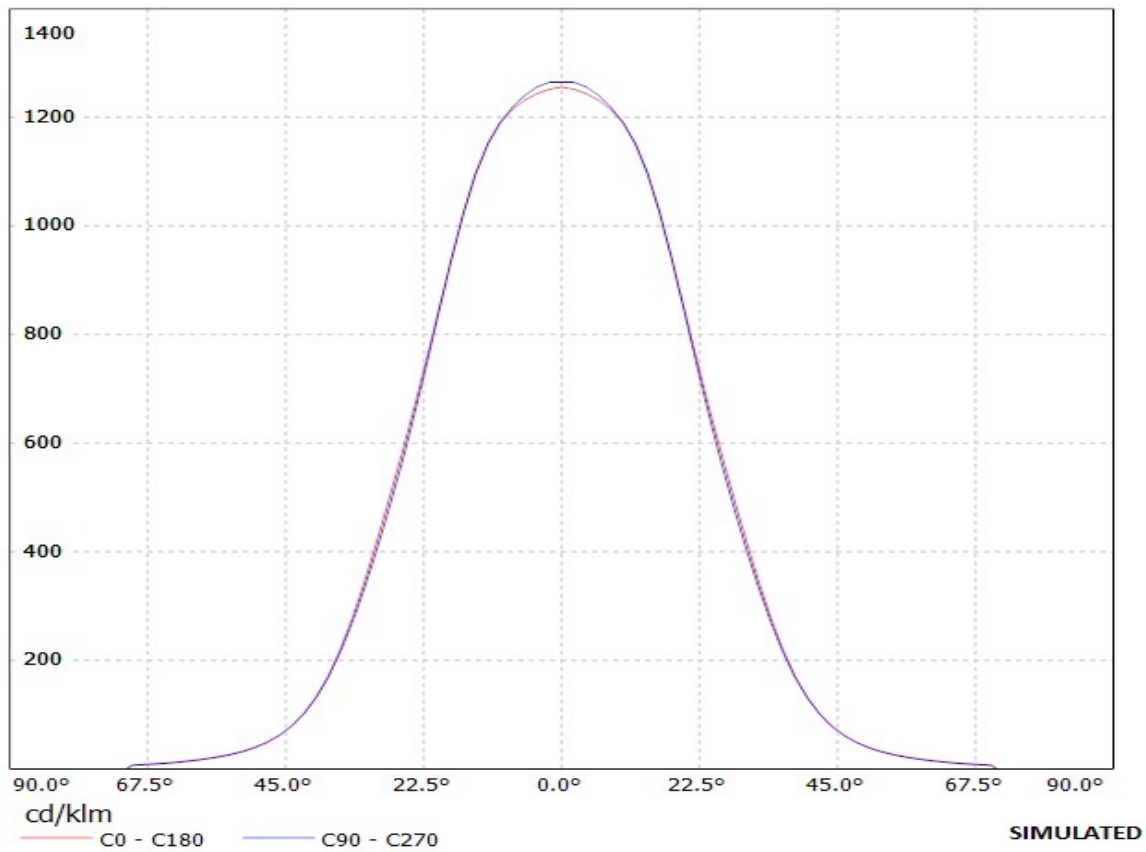
Ledil Oy FA10314_SSS-O FA10314_SSS-O / LDC (Linear)

Luminaire: Ledil Oy FA10314_SSS-O FA10314_SSS-O
Lamps: 1 x SEOUL P4 (white)



Ledil Oy FA10539_SSS-W FA10539_SSS-W / LDC (Linear)

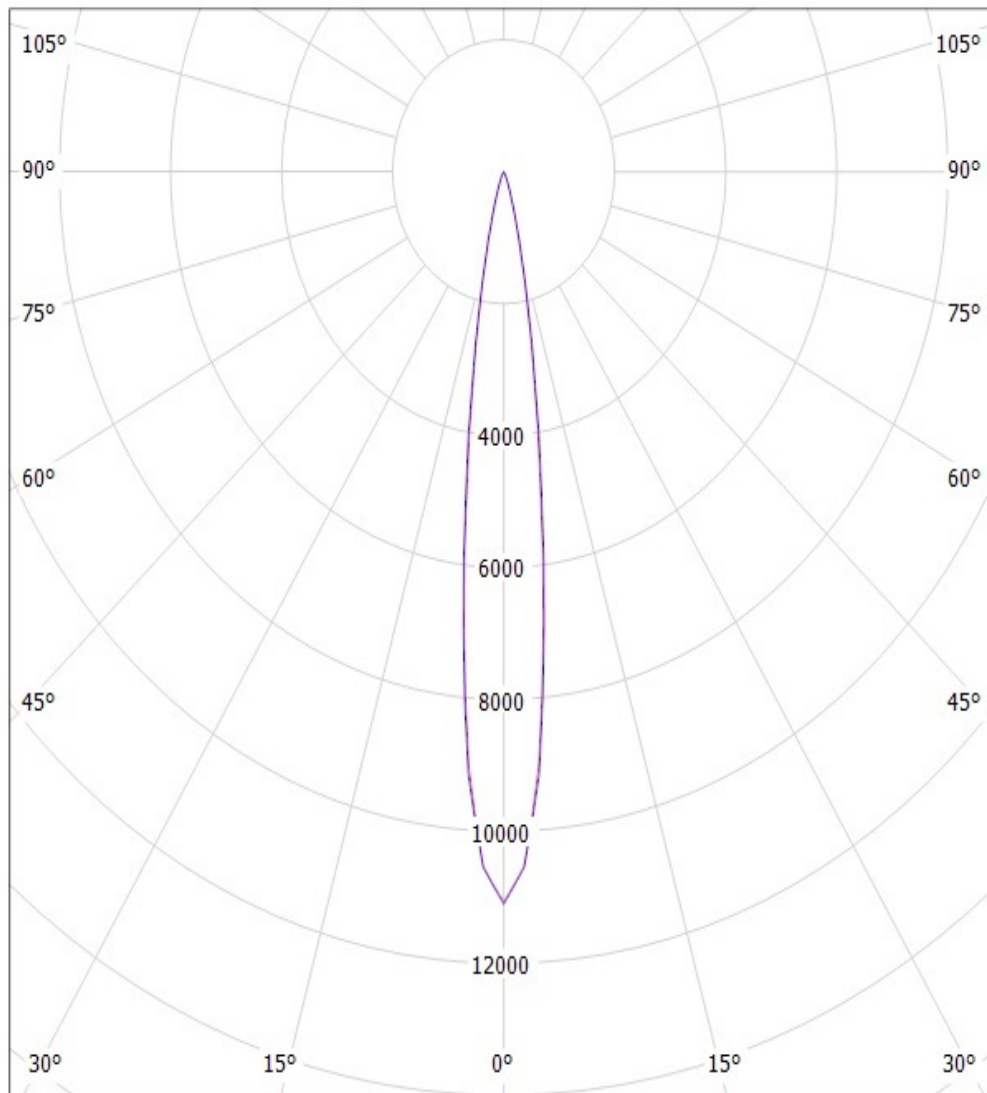
Luminaire: Ledil Oy FA10539_SSS-W FA10539_SSS-W
Lamps: 1 x SEOUL P4 (white)



Ledil Oy FA10330_SSS-SS FA10330_SSS-SS / LDC (Polar)

Luminaire: Ledil Oy FA10330_SSS-SS FA10330_SSS-SS

Lamps: 1 x SEOUL P4



cd/klm

— C0 - C180

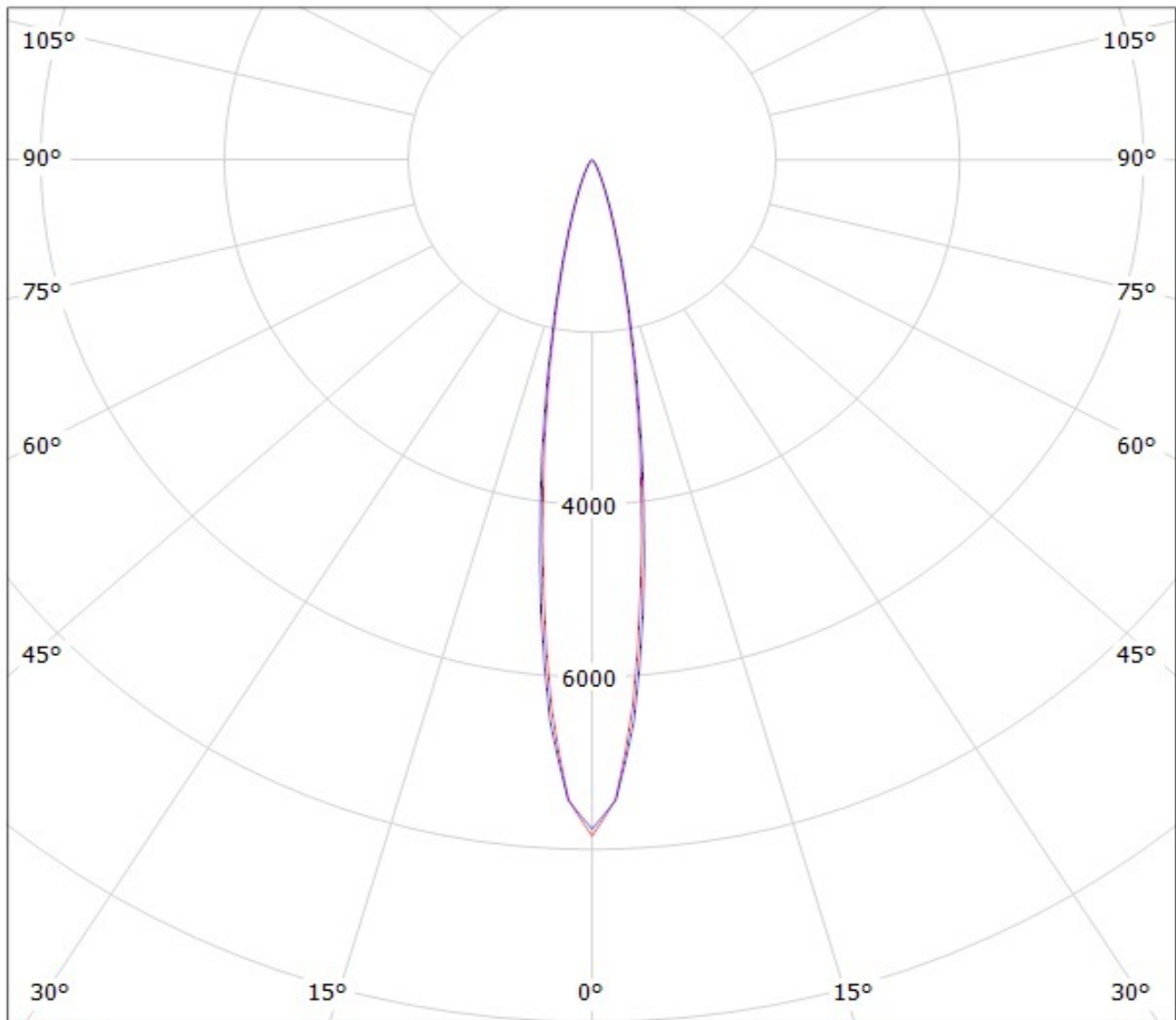
— C90 - C270

SIMULATED

Ledil Oy FA10312_SSS-D FA10312_SSS-D / LDC (Polar)

Luminaire: Ledil Oy FA10312_SSS-D FA10312_SSS-D

Lamps: 1 x SEOUL P4 (white)



cd/klm

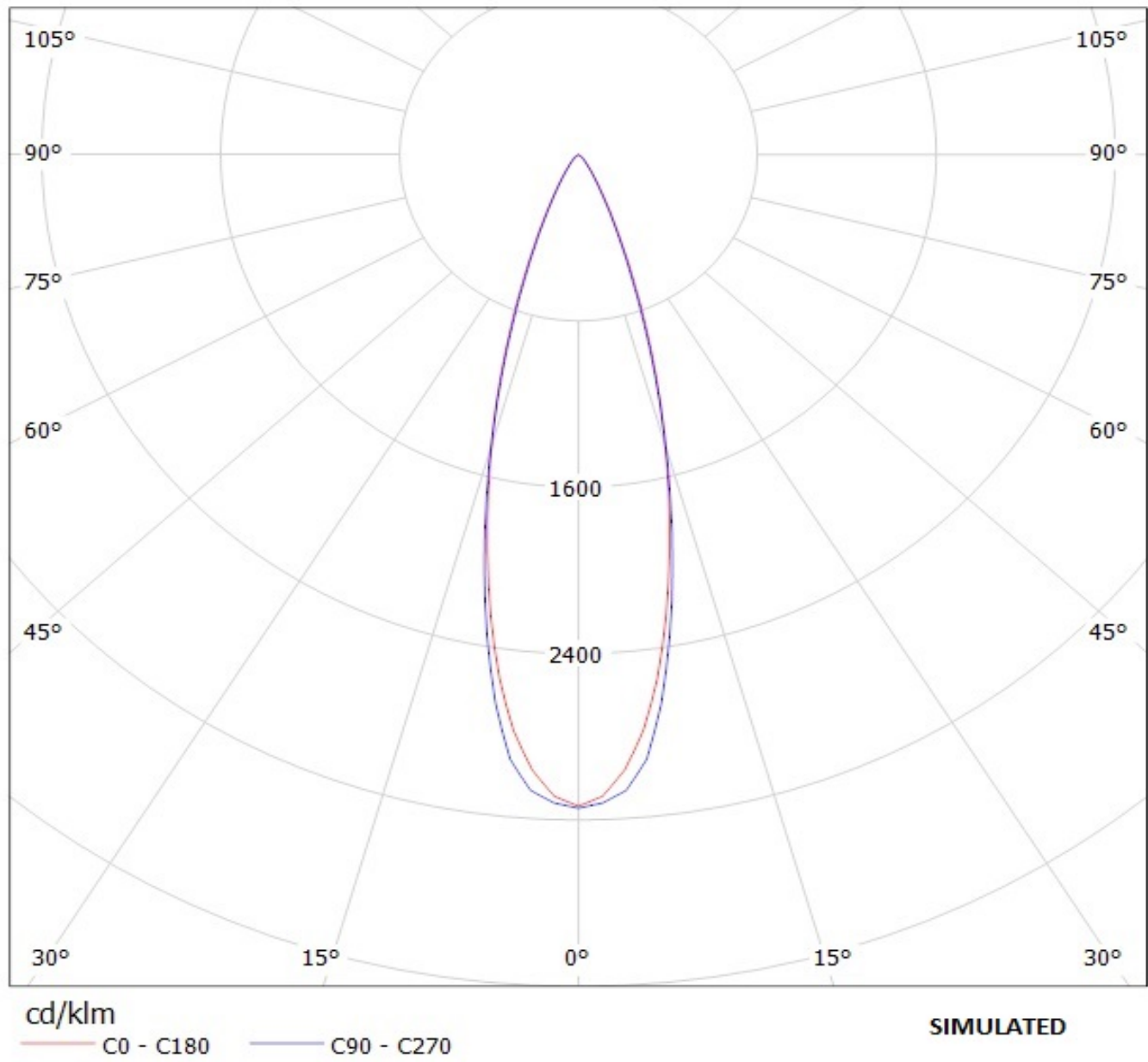
— C0 - C180

— C90 - C270

SIMULATED

Ledil Oy FA10313_SSS-M FA10313_SSS-M / LDC (Polar)

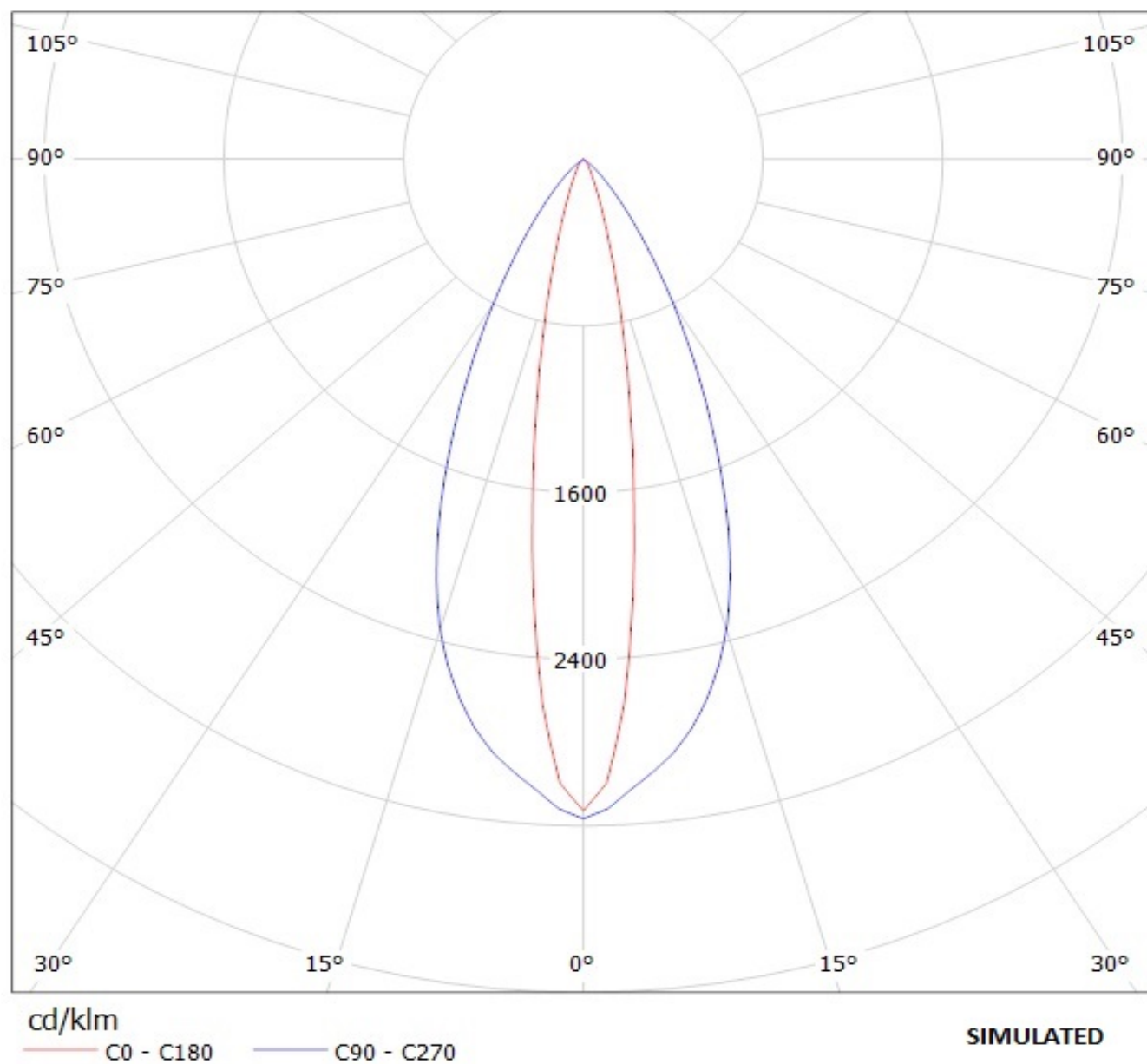
Luminaire: Ledil Oy FA10313_SSS-M FA10313_SSS-M
Lamps: 1 x SEOUL P4 (white)



Ledil Oy FA10314_SSS-O FA10314_SSS-O / LDC (Polar)

Luminaire: Ledil Oy FA10314_SSS-O FA10314_SSS-O

Lamps: 1 x SEOUL P4 (white)



Ledil Oy FA10539_SSS-W FA10539_SSS-W / LDC (Polar)

Luminaire: Ledil Oy FA10539_SSS-W FA10539_SSS-W

Lamps: 1 x SEOUL P4 (white)

