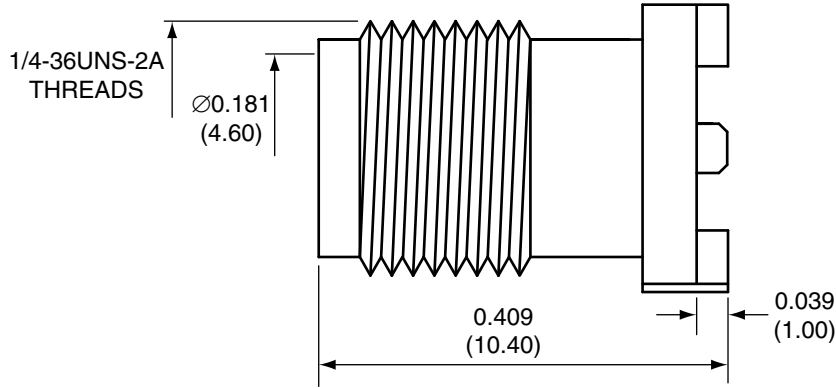
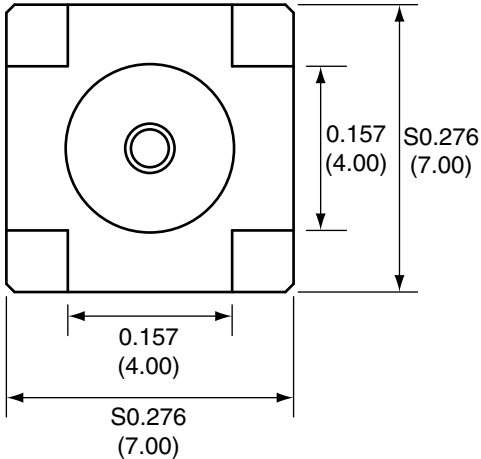


Description	Material	Finish
Body (-SMD)	Brass	Gold
Body (-SMD-N)	Brass	Nickel
Pin/Socket	BE CU	Gold
Insulation	PTFE	N/A

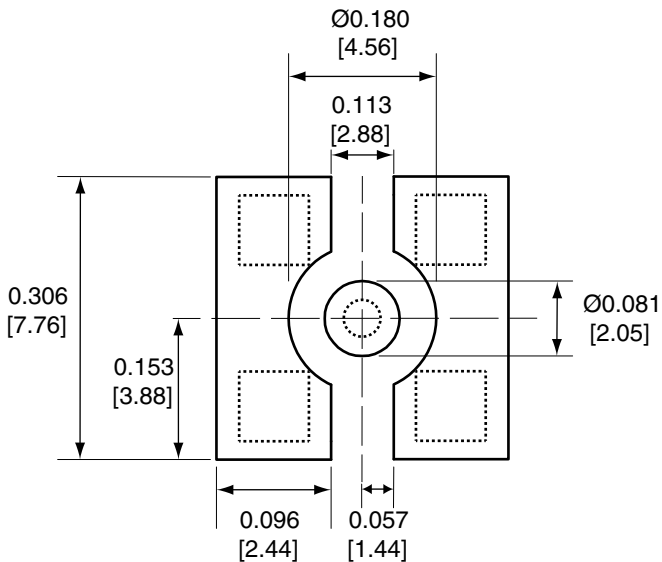
REVISIONS			
REV	DESCRIPTION	DATE	APPV
B	Recommended Footprint revised; Gold & Nickel finish options	9/25/09	CJ
C	Added new title block; Updated recommended footprint	13-JUL-12	BPM



SIDE VIEW



BOTTOM VIEW

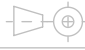


RECOMMENDED FOOTPRINT

NOTES: (UNLESS OTHERWISE SPECIFIED)

1. ALL DIMENSIONS ARE IN INCHES [mm].
2. DIMENSIONS APPLY AFTER FINISHING.
3. MANUFACTURE TO BE COMPLIANT WITH EU RoHS DIRECTIVE.
4. SAFETY BREAK ALL SHARP CORNERS AND EDGES .02 MAXIMUM.

WARNING: THIS DRAWING CONTAINS PROPRIETARY INFORMATION THAT IS THE SOLE PROPERTY OF LINX TECHNOLOGIES, AND SHALL BE TREATED AS SUCH. NO DISCLOSURE OR REPRODUCTION OF THIS DOCUMENT IS PERMITTED, IN WHOLE OR IN PART, WITHOUT THE EXPRESS WRITTEN PERMISSION OF LINX TECHNOLOGIES OR ITS DESIGNATED AGENTS.

MATERIAL:	TOLERANCES: .020 [0.50]-.200 [5.00]= ±.008 [0.20] .200 [5.00]-1.200 [30.00]= ±.016 [0.40] 1.20 [30.0]-4.75 [120.0]= ±.024 [0.60] 4.75 [120.0]-12.40 [315.0]= ±.040 [1.0]	PROJECTION:  ANGLES: ±1°
	DRAWN: CJ	DT: 9/25/09
FINISH:	ENGR:	DT:

Linx

159 ORT LANE
MERLIN, OR 97532

TITLE:

SMA FEMALE PCB MOUNT
SURFACE MOUNT

SIZE
A

DWG. NO.

CONSMA001-SMD (Gold finish)
CONSMA001-SMD-N (Nickel finish)

REV
C

SCALE: 2:1

DO NOT SCALE DRAWING

SHEET 1 OF 1