

FEATURES AND SPECIFICATIONS

Features and Benefits

- Supports digital signals and offers excellent EMI/RFI performance
- Plug and play interface
- LFH™ contact design is rugged and reliable
- DDWG DVI standard interface
- Supports 4.95 Gbps over a single link and 9.9 Gbps performance over a dual link implementation
- Narrow key slot for polarization

Reference Information

Product Specification: PS-74320-001

Packaging: 71781—Bag

74320—Tray

UL File No.: E29179

CSA File No.: LR19980

Mates With: Versions of [88741](#), 74323 and other plug components

Designed In: Inches

Electrical

Voltage: 40V

Current: 3.0A

Contact Resistance: 20mΩ max.

Dielectric Withstanding Voltage: 500V

Insulation Resistance: 1000 MΩ min.

Mechanical

Contact Retention to Housing: 1 lb. min.

Insertion Force to PCB: 10 lb. max.

Mating Force: 10 lb. max.

Unmating Force: 2.2 lb. min.

Durability: 100 cycles

Physical

Housing: Glass-filled thermoplastic, UL 94V-0

Contact: Copper Alloy

Plating: Contact—30μ" Gold or Gold flash in contact area and 100μ" or 150μ" Tin/Lead in tail area over Nickel overall

Shields—100μ" bright Tin over Copper overall

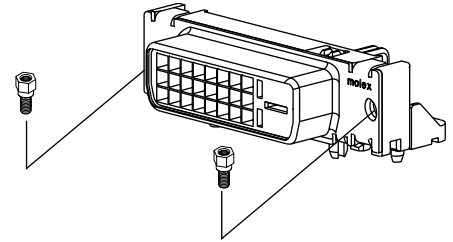
Operating Temperature: -20 to +85°C



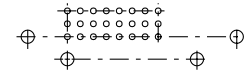
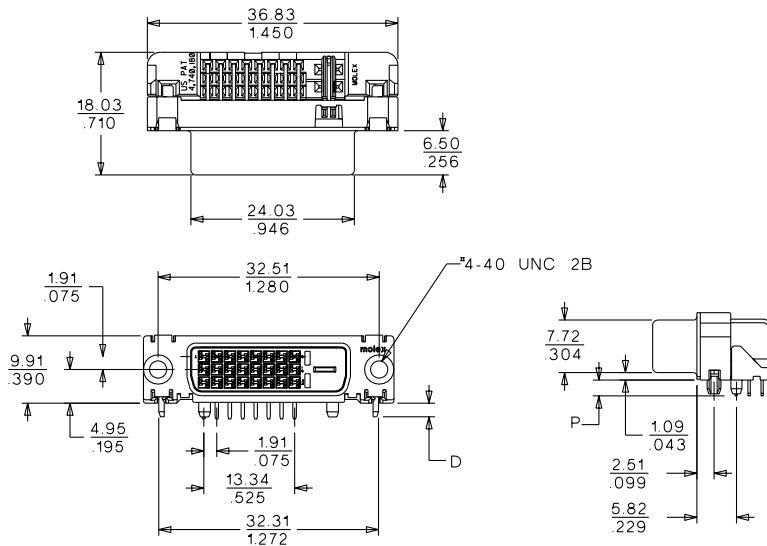
MicroCross™ DVI-D Digital Visual Interface Receptacle Header and Hardware

74320/71781

Panel Mount Through Hole Right Angle



CATALOG DRAWING (FOR REFERENCE ONLY)



FOR P.C.B. LAYOUT AND PANEL
CUTOUT CONTACT FACTORY.



ORDERING INFORMATION AND DIMENSIONS

Order No.	Description	Dimension		Plating
		D	P	
74320-4000	Right Angle Receptacle	2.03 (.080)	2.34 (.092)	30μ" Gold
74320-4004	Right Angle Receptacle	2.03 (.080)	2.34 (.092)	Gold Flash
71781-0001	Jackpost			Clear Chromate
71781-0002	Self-Clinching Jackpost			Zinc/Yellow Chromate

Please contact Molex for additional tail length options