

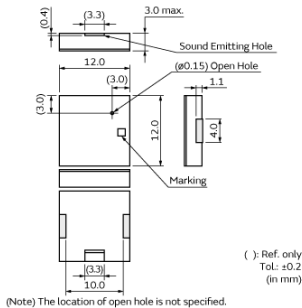
# PKLCS1212E24A0-R1

In Production

RoHS

REACH

## Appearance & Shape



## Features

Taking advantage of extensive acoustic and mechanical design technology and high performance ceramics, Murata has developed SMD piezoelectric sounders that suit the thin, high-density design of electronic equipment.

- Features
1. Small, thin and lightweight
  2. High sound pressure level and clear sound
  3. Reflowable
  4. Tape & Reel supply

## Applications

|                  |              |
|------------------|--------------|
| Automotive Usage | Infotainment |
| Other Usage      | Automotive   |

## Packaging Information

| Packaging | Specifications | Minimum Order Quantity |
|-----------|----------------|------------------------|
| -R1       | Embossed Tape  | 1000                   |

**Attention**

1.This datasheet is downloaded from the website of Murata Manufacturing Co., Ltd. Therefore, it's specifications are subject to change or our products in it may be discontinued without advance notice. Please check with our sales representatives or product engineers before ordering.

2.This datasheet has only typical specifications because there is no space for detailed specifications.

Therefore, please review our product specifications or consult the approval sheet for product specifications before ordering.

# PKLCS1212E24A0-R1

## Specifications

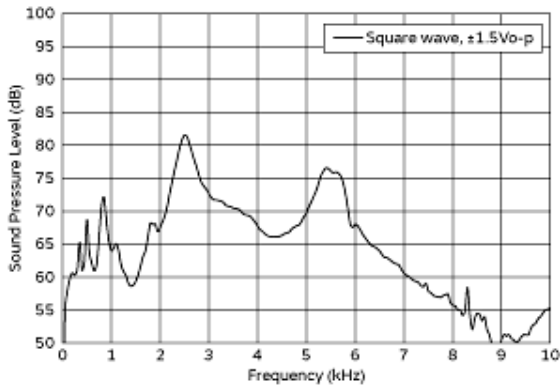
|   |                                     |
|---|-------------------------------------|
| Size                                      | 12.0×12.0×3.0 mm                    |
| Frequency                                 | 2.4kHz                              |
| Sound Pressure Level                      | 80dB (typ.)                         |
| Sound Pressure Level                      | 75dB (min.)                         |
| Measure Condition of Sound Pressure Level | [±1.5 Vo-p,2.4kHz,square wave,10cm] |
| Maximum input voltage                     | ±12.5Vo-p max.                      |
| Operating Temperature Range               | -40°C to 85°C                       |
| Storage Temperature Range                 | -40°C to 85°C                       |
| Shape                                     | SMD                                 |
| Drive Type                                | External Drive                      |

**Attention**

1.This datasheet is downloaded from the website of Murata Manufacturing Co., Ltd. Therefore, it's specifications are subject to change or our products in it may be discontinued without advance notice. Please check with our sales representatives or product engineers before ordering.  
2.This datasheet has only typical specifications because there is no space for detailed specifications.  
Therefore, please review our product specifications or consult the approval sheet for product specifications before ordering.

# PKLCS1212E24A0-R1

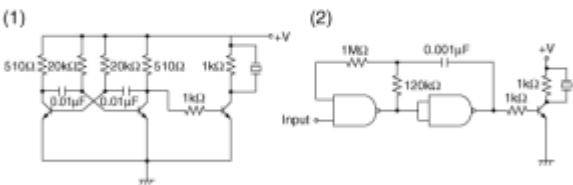
## Product Data



Frequency Response

The following are examples of externally driven circuits.

- (1) Unstable multi-vibrator using Tr.
- (2) Circuits using inverters or NAND gates.



Recommended Circuit

### Attention

1.This datasheet is downloaded from the website of Murata Manufacturing Co., Ltd. Therefore, it's specifications are subject to change or our products in it may be discontinued without advance notice. Please check with our sales representatives or product engineers before ordering.  
2.This datasheet has only typical specifications because there is no space for detailed specifications.  
Therefore, please review our product specifications or consult the approval sheet for product specifications before ordering.