


Product Search


Your Search for "nl4" returned 23 Match(es):



Speakon® Lockable Loudspeaker Connector




Cable Connectors



NL4FC

4 pole cable connector with latch lock. Cable sleeve for cables 5 - 15 mm diameter. 30 A continuous per contact.

[Specs](#)
[PDF](#)
[DXF](#)



Chassis Connectors



NL4MD-H

4 pole chassis connector with thread holes for A-SCREW. Color grey. Horizontal PCB mounting version of NL4MP.

[Specs](#)
[PDF](#)
[DXF](#)



NL4MD-H-1

4 pole chassis connector. Horizontal PCB mounting version of NL4MP. Bolt and nut, top left, down right, black.


[Specs](#)
[PDF](#)
[DXF](#)



NL4MD-H-2

4 pole chassis connector. Horizontal PCB mounting version of NL4MP. Reflected thread holes for A-SCREW, black.


[Specs](#)
[PDF](#)
[DXF](#)



NL4MD-H-3

4 pole chassis connector. Horizontal PCB mounting version of NL4MP. Reflected thread holes for A-SCREW, top left, down right, black.

[Specs](#)
[PDF](#)
[DXF](#)



NL4MD-V

4 pole chassis connector. Vertical PCB mounting version of NL4MP.

[Specs](#)
[PDF](#)
[DXF](#)



NL4MD-V-1

4 pole chassis connector. Vertical PCB mounting version of NL4MP.

Thread holes for A-SCREW, grey.

[Specs](#) [PDF](#) [DXF](#)



#### NL4MD-V-2

4 pole chassis connector. Vertical PCB mounting version of NL4MP. Reflected thread holes for A-SCREW, black.

[Specs](#) [PDF](#) [DXF](#)



#### NL4MP

4 pole chassis connector. D-size flange.

[Specs](#) [PDF](#) [DXF](#)



#### NL4MP-1

4 pole chassis connector. D-size flange. Thread holes for A-SCREW, grey.

[Specs](#) [PDF](#) [DXF](#)



#### NL4MP-2

4 pole chassis connector. D-size flange. Thread holes for A-SCREW, top right, down left, black.

[Specs](#) [PDF](#) [DXF](#)



#### NL4MP-3

4 pole chassis connector. D-size flange. Thread holes for A-SCREW, top left, down right, black.

[Specs](#) [PDF](#) [DXF](#)



#### NL4MP-M3

4 pole chassis connector. D-size flange. Thread holes for M3-SCREW, top left, down right, black.

[Specs](#) [PDF](#) [DXF](#)



#### NL4MP-ST

4 pole chassis connector with screw termination. D-size flange. This Speakon chassis connector is not airtight.

[Specs](#) [PDF](#) [DXF](#)



#### NL4MP-UC

4 pole chassis connector for 40 A rms continuous, 50 A audiosignal, duty cycle 50%. ¼" Faston termination. D-size flange connectors.

[Specs](#) [PDF](#) [DXF](#)



#### NL4MPR

4 pole chassis connector, round flange for speaker cabinets.

[Specs](#) [PDF](#) [DXF](#)



#### Adapter





#### NL4MMX

4 pole lockable coupler. Links two NL2/4FC`s together for cable extension. Can be permanently attached to NL2/4FC.

[Specs](#) [PDF](#) [DXF](#)

#### SPX Series



#### NL4FRX

4 pole right-angle cable connector with chuck and bushing.

[Specs](#) [PDF](#) [DXF](#)



#### NL4FX

4 pole cable connector with chuck and dark grey bushing.

[Specs](#) [PDF](#) [DXF](#)



#### NL4FX-2

4 pole cable connector with chuck and red bushing.

[Specs](#) [PDF](#) [DXF](#)



#### NL4FX-4

4 pole cable connector with chuck and yellow bushing.

[Specs](#) [PDF](#) [DXF](#)



#### NL4FX-5

4 pole cable connector with chuck and green bushing.

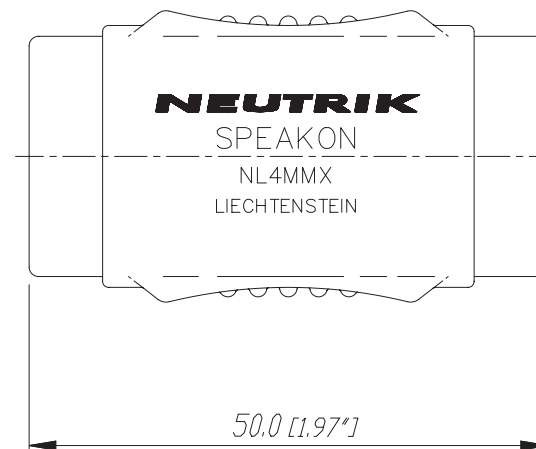
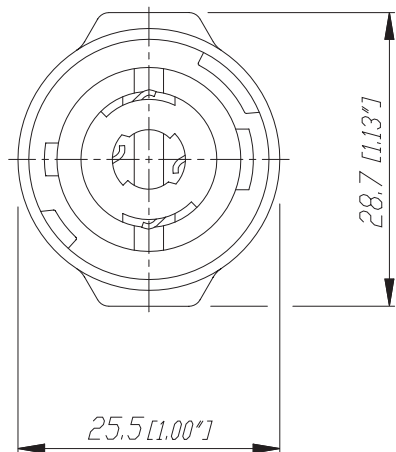
[Specs](#) [PDF](#) [DXF](#)



#### NL4FX-9

4 pole cable connector with chuck and white bushing.

[Specs](#) [PDF](#) [DXF](#)



					Werkstoff:	Massstab:		Datum	Name
				*Lieferant darf ohne Ruecksprache nicht geändert werden		2:1	Gezeichnet	27.02.2002	Battlogg
				Zeichnung urheberrechtlich geschuetzt (DIN 34) (C)			Geprueft		
				Benennung:	Speakon NL 4MMX			Ersetzt durch:	Blatt
								Ersatz fuer:	von Blatt
								Zeichn. Nr.	
Ind.	Aenderung	Datum	Name	NEUTRIK AG FL-9494 SCHAAN					