

Features

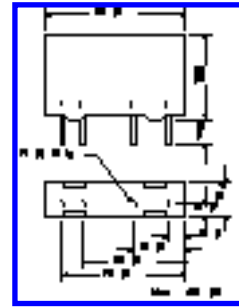
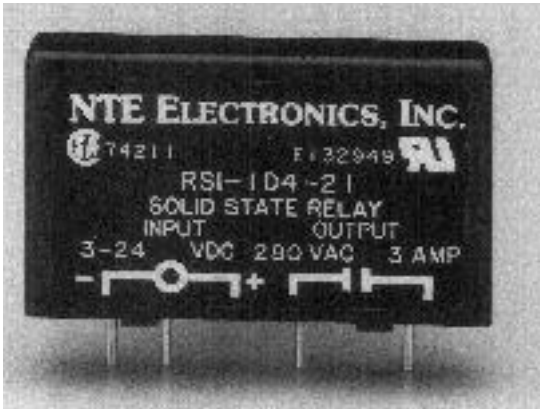
- Thick Film Hybrid Construction
- High Current Thyristor for 100A Surge Capability
- 4KV Optical Isolation
- Industry Standard Package

RS1-1D4-21



Printed Circuit Board Mountable Solid State Relay, 4 Amp

Dimensional Drawings D30



Input Specifications

Control Voltage: 3 - 24VDC
Min. Turn On Voltage: 3.0VDC
Max. Input Voltage: 24VDC
Drop Out Voltage: 1.0VDC
Max. Input Current: 25mADC
Nom. Input Resistance: 1k Ohm

Output Specifications

Max. Output Voltage: 280VAC
Max. Output Current: 4A @ 20°C Ambient
Nom. Line Voltage: 200Vrms
Min. Line Voltage: 24Vrms
Max. Line Voltage: 280Vrms
Max. Peak Of-State Voltage: 600V Peak
Static (Off-State) dv/dt: 200V/μs

Electrical Specifications

Max. On-State Current: 3.5A
Min. On-State Current: 0.5A
Max. 1-Cycle Surge: 100A
On-State Voltage Drop: 1.6V Peak
Max. On-State Leakage: 6.0mArms

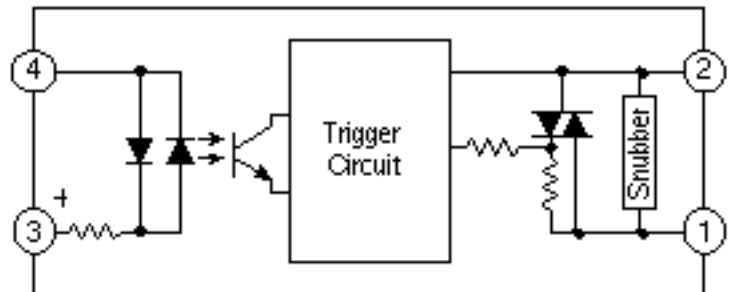
Environmental Characteristics

Operating: -30° to +80°C
Storage: -40° to +100°C

Operational Characteristics

Response Time: 0.5 Cycle

Equivalent Circuit



ACCESSORIES

Mounting Styles	Description	NTE Type No.
DIN Rail Mount	1-Position Socket	RLY9141
	2-Position Socket	RLY9142
	4-Position Socket	RLY9144

Capacitance Input-to-Output: 8pF Max

Linee Frequency Range: 47 to 63Hz



[Home](#) [Back](#)