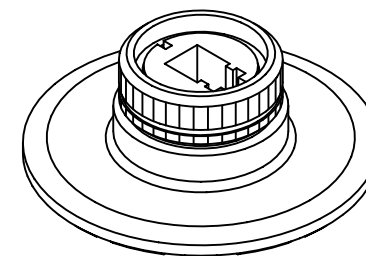
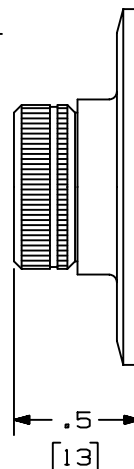
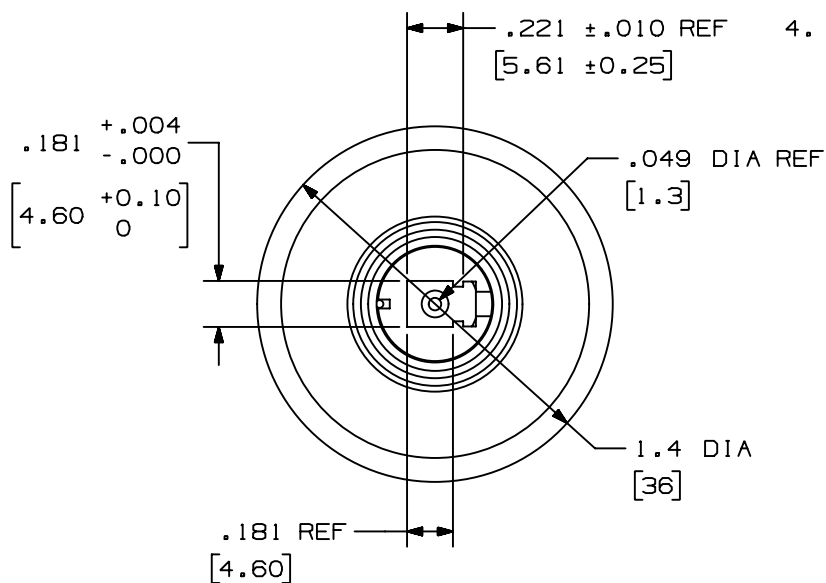




PANDUIT PART NUMBER	WEIGHT
FLCPK	.05 LB./EACH ( 22.2 GRAMS/EACH )

1. SEE CURRENT CATALOG FOR ADDITIONAL PART NUMBER SUFFIXES TO INDICATE PACKAGE QUANTITIES.
2. THE POLISHING PUCK IS CONSTRUCTED FROM A NON-RUSTING, NON-PITTING MATERIAL AND IS DESIGNED TO BE USED FOR THE POLISHING OF LC TYPE CONNECTORS.
3. THE POLISHING PUCK INCORPORATES A SPRING-LOADED "POSITIVE" LATCHING MECHANISM THAT RETAINS THE CONNECTOR AND DOES NOT ALLOW IT TO ROTATE DURING THE POLISHING PROCESS WHILE SUPPLYING A CONSTANT PRESSURE ONTO THE ENDFACE OF THE FERRULE.
4. ALL DIMENSIONS IN BRACKETS ARE METRIC [mm].



		<h1 style="text-align: center;">PANDUIT<sup>TM</sup></h1> <p style="text-align: center;">TINLEY PARK, ILL 60477</p>		<p style="text-align: right;">CORP.</p>	
 <p style="text-align: center;">THIRD ANGLE PROJECTION</p>		<p style="text-align: center;">ALL DIMENSIONS ARE GIVEN IN INCHES UNLESS OTHERWISE SPECIFIED.</p>		<p>DRAWING FILENAME</p> <p style="text-align: center;">MO1190CA_DC_00B.prp</p>	
<p style="text-align: center;">DIMENSIONAL TOLERANCES ARE:</p> <p>(.X) (.XXX) ±.010 (0.3)</p> <p>(.XX) ±.03 (0.8) ANGLES</p>		<p>SCALE</p> <p style="text-align: center;">NONE</p>		<p>PART NO.</p> <p style="text-align: center;">FLCPK</p>	
<p>DRAWN BY</p> <p style="text-align: center;">EFK</p>		<p>REVIEW DRAWING NUMBERS</p>		<p>DRAWING NO.</p> <p style="text-align: center;">01190-25</p>	
<p>DATE</p> <p style="text-align: center;">07-24-03</p>		<p>CHK'D</p> <p style="text-align: center;">RTF1</p>		<p>SIZE</p> <p style="text-align: center;">A</p>	