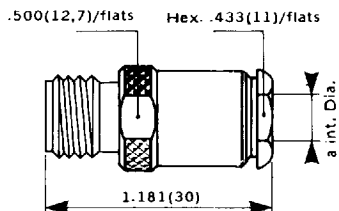


CABLE CLAMP TYPE FOR FLEXIBLE CABLE

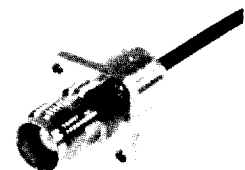
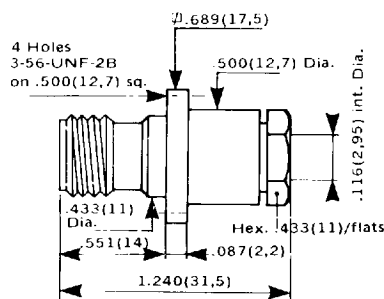
Straight jacks

CABLE GROUP	.197 (5) / 50	.236 (6) / 75 + 93
PART NUMBER	R 143 207 000	R 143 210 000●
a Dia. max.	.220 (5.6)	.260 (6.5)
Captive contact	NO	YES
Assembly instructions	M02 page 27	



Square flange straight jack

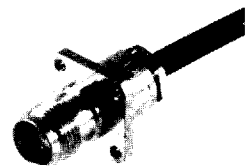
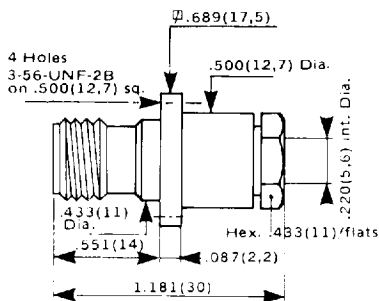
CABLE GROUP	.102 (2.6) / 50 + 75	
PART NUMBER	R 143 254 000	
Captive contact	YES	
Assembly instructions	M04 page 29	
Panel drilling	P2 + P3 page 18	



Also for M 2.5 screws

Square flange straight jack

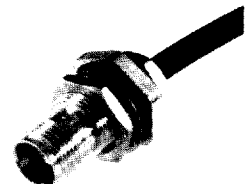
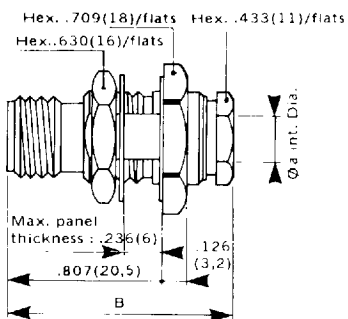
CABLE GROUP	.197 (5) / 50	
PART NUMBER	R 143 258 000	
Captive contact	NO	
Assembly instructions	M02 page 27	
Panel drilling	P2 + P3 page 18	



Also for M 2.5 screws

CABLE GROUP	.102 (2.6) / 50 + 75	.197 (5) / 50	
PART NUMBER	R 143 324 000	R 143 324 410●	R 143 325 000
a Dia. max.	.118 (3)	.220 (5.6)	
Dim. B	1.240 (31.5)		1.181 (30)
Body	1 flat	2 flats	1 flat
Captive contact	YES		
Assembly instructions	M04 page 29		M02 page 27
Panel drilling	P11 + P12 page 18		

Bulkhead straight jacks



● Manufactured upon request.